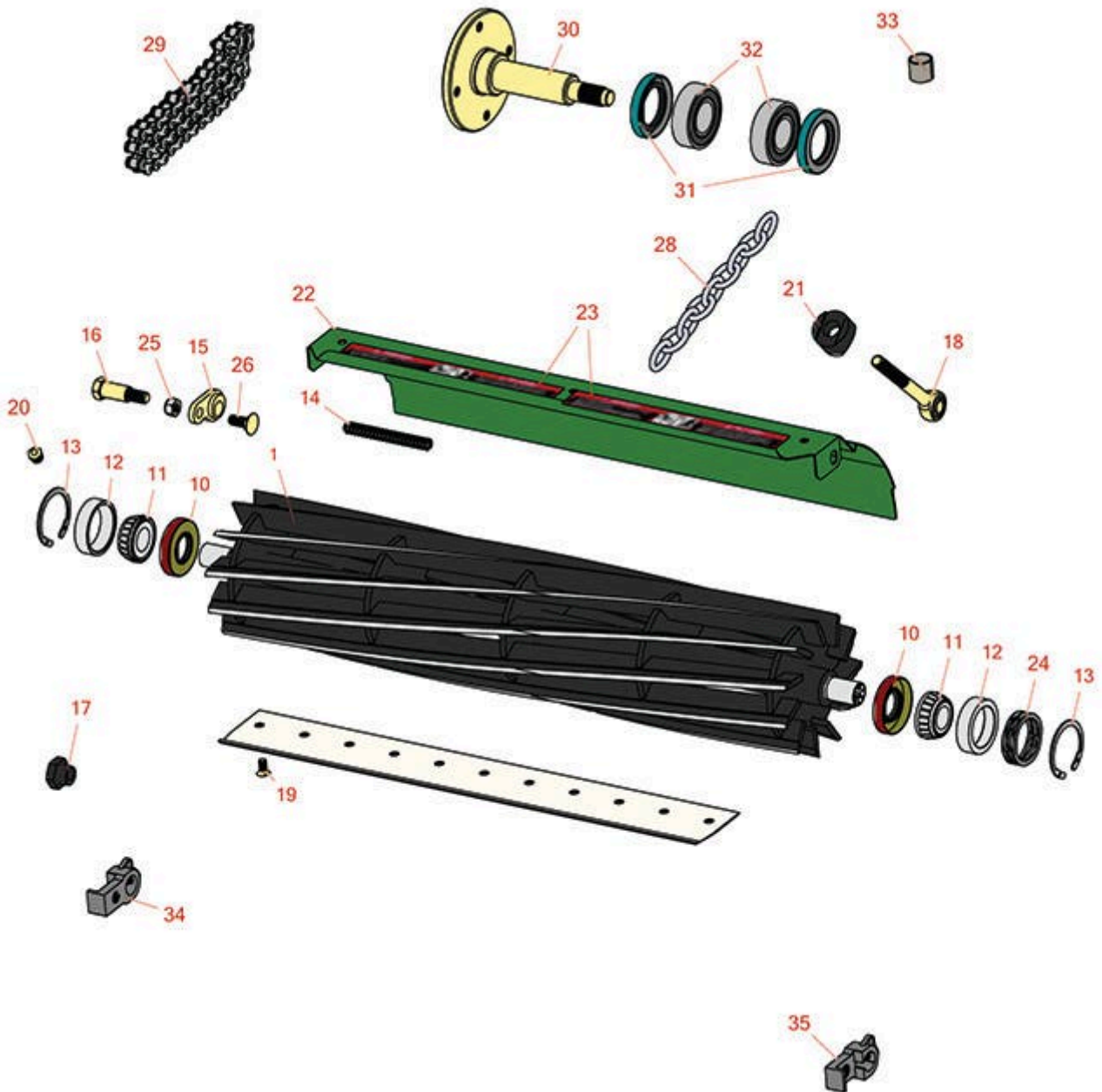




# Replaces John Deere 180 E-Cut Hybrid Walk-Behind Greens Mower Parts

Cutting Unit  
Reel & Bedknife



All original equipment manufacturers names and part numbers are used for identification purposes only, and we are in no way implying that our products are original equipment parts. Prices subject to change without notice.



# Replaces John Deere 180 E-Cut Hybrid Walk-Behind Greens Mower Parts

Cutting Unit  
Reel & Bedknife



Item No	R&R Part No.	OEM Part No.	Description	Qty Req	Order Quantity
---------	--------------	--------------	-------------	---------	----------------

## R&R Reels, Lifetime Guaranteed

1	<b>RTCA19348</b>	TCA19348	Reel - 7 Blade	1	
1	<b>RTCA19349</b>	TCA19349	Reel - 11 Blade	1	
1	<b>RTCA23622</b>	TCA23622	Reel - 14 Blade	1	

## Other Parts Available

10	<b>RET14566</b>	ET14566	Seal - Reel	2	
11	<b>R254-78</b>	JD8188	Tapered Bearing Cone	2	
12	<b>R254-79</b>	JD8226	Cup - Bearing	2	

*Tech Note: Use R254-79M installation mandrel to properly install race.:*

13	<b>R40M7226</b>	40M1862, 40M7226	Ring - Retaining	2	
14	<b>RTCUC25398</b>	TCUC25398	Compression Spring	1	
15	<b>RTCUC24334</b>	TCUC24334	Retainer	2	
16	<b>RMT3016</b>	MT3016	Bolt - Bed Bar	2	
17	<b>RTCUC28635</b>	TCUC24555, TCUC28635	Eccentric	2	
18	<b>RTCUC25223</b>	TCUC25223, TCUC30798	Spherical Rod End	2	
19	<b>R101278</b>	21M7194	Screw - Bedknife	11	
20	<b>R170714</b>	E14814	Fitting - Pressure Relief	2	
21	<b>RTCUC25394</b>	TCUC25394, TCUC27453	Base	2	
22	<b>RTCA18643</b>	TCA18643	Shield - (w/Labels)	1	
23	<b>RMT6517</b>	MT6517	Label - Warning	2	

All original equipment manufacturers names and part numbers are used for identification purposes only, and we are in no way implying that our products are original equipment parts. Prices subject to change without notice.



# Replaces John Deere 180 E-Cut Hybrid Walk-Behind Greens Mower Parts

*Cutting Unit  
Reel & Bedknife*



Item No	R&R Part No.	OEM Part No.	Description	Qty Req	Order Quantity
24	<b>RTC23880</b>	TCU23880, TCU28964	Compression Spring - Reel Bearing	1	
25	<b>RH137328</b>	H137328	Locknut	2	
26	<b>R03M7184</b>	03M7184	Bolt - Carriage M8	2	
28	<b>RAMT1479</b>	AMT1479	Chain - Link	2	
29	<b>RTCA16595</b>	TCA16595	Chain - Rear Roller	1	
30	<b>RET11081</b>	ET11081	Spindle - Traction Roller	1	
31	<b>RET10285</b>	ET10285	Seal	2	
32	<b>R345050</b>	AZ20217, AZX20217	Bearing	2	
33	<b>RMT74</b>	MT74	Bushing - Roller Bkt	2	
34	<b>RUC16109</b>	UC16109	Bracket	1	
35	<b>RUC18211</b>	UC18211	Bracket	1	

All original equipment manufacturers names and part numbers are used for identification purposes only, and we are in no way implying that our products are original equipment parts. Prices subject to change without notice.