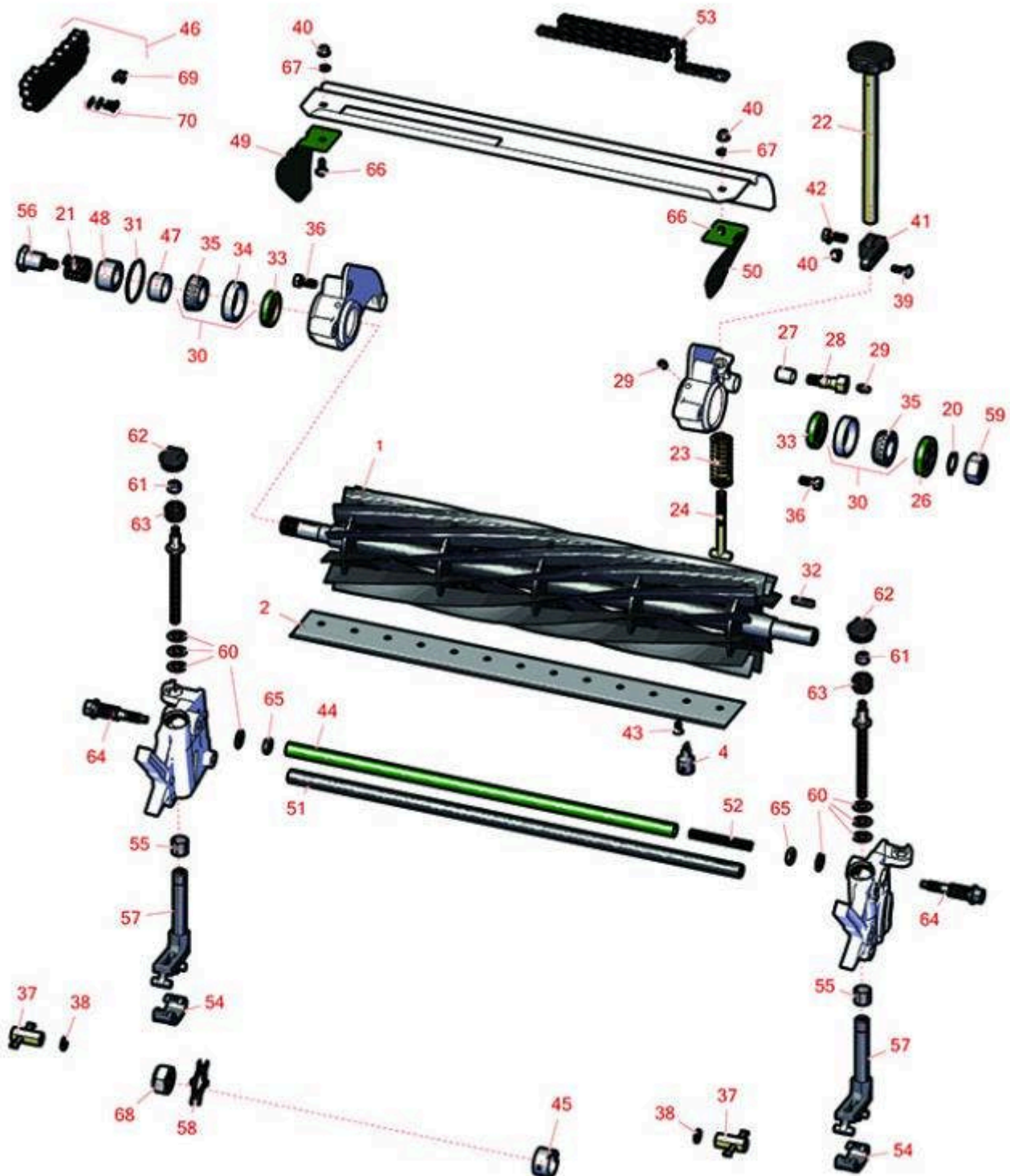




Replaces John Deere 220SL Walking Greens Mower Parts

Cutting Unit
Reel & Bedknife



All original equipment manufacturers names and part numbers are used for identification purposes only, and we are in no way implying that our products are original equipment parts. Prices subject to change without notice.



Replaces John Deere 220SL Walking Greens Mower Parts

Cutting Unit
Reel & Bedknife



Item No	R&R Part No.	OEM Part No.	Description	Qty Req	Order Quantity
---------	--------------	--------------	-------------	---------	----------------

R&R Reels, Lifetime Guaranteed

1	RAMT537	AMT2886, AMT537	Reel - 11 Blade 22in	1	
---	---------	--------------------	----------------------	---	--

Detail Description: R&R Reel blades are expertly crafted from premium high carbon-boron alloy steel, heat-treated to perfectly complement both R&R and OEM bedknives. Each reel undergoes precision cylindrical grinding on bearing surfaces, followed by relief grinding for optimal performance. Advanced computer balancing ensures extended reel and bearing life. Backed by our lifetime guarantee against defects in materials and craftsmanship under normal use, R&R Reels deliver unmatched durability and cutting precision you can trust.:

1	RTCA23623	TCA23623	Reel - 14 Blade	1	
---	-----------	----------	-----------------	---	--

R&R Bedknives, Lifetime Guaranteed

2	R130116	MT4846, UC18877	Bedknife - Razor Tool Steel - 22 Tournament Cut	1	
---	---------	--------------------	--	---	--

Detail Description: R&R Razor bedknives are manufactured from premium alloy tool steel steel and then hardened to RC48-51 to match the temper of our Razor reel blades and original equipment premium series reels. Bedknives are surface ground on the top and front edge and specially packaged for rust prevention. All R&R Bedknives now have an increased front edge grind for added life. All R&R Bedknives are guaranteed against defects in material and workmanship under normal use for the life of the part. You can expect up to double the life over standard bedknives.:

2	RMT7351	ET17489, MT7351, UC19154, UC28163	Bedknife - 22in Lo-Cut .079 Min. HOC	1	
---	---------	--	---	---	--

Detail Description: R&R Bedknives are manufactured from high carbon-boron alloy steel and then hardened to RC46-49 to match the temper of our reel blades and original equipment reels. Bedknives are surface ground on the top and front edge and straightened three times before being packaged with oil for rust prevention. All R&R Bedknives now have an increased front edge grind for added life. All R&R Bedknives are guaranteed against defects in material and workmanship under normal use for the life of the part.:

2	RET17533	ET14402, ET17533, ET17767, MT4869, MT7351, UC18873	Bedknife - 22in Standard- .126 Min. HOC	1	
---	----------	---	--	---	--

All original equipment manufacturers names and part numbers are used for identification purposes only, and we are in no way implying that our products are original equipment parts. Prices subject to change without notice.



Replaces John Deere 220SL Walking Greens Mower Parts

Cutting Unit
Reel & Bedknife



Item No	R&R Part No.	OEM Part No.	Description	Qty Req	Order Quantity
---------	--------------	--------------	-------------	---------	----------------

Detail Description: R&R Bedknives are manufactured from high carbon-boron alloy steel and then hardened to RC46-49 to match the temper of our reel blades and original equipment reels. Bedknives are surface ground on the top and front edge and straightened three times before being packaged with oil for rust prevention. All R&R Bedknives now have an increased front edge grind for added life. All R&R Bedknives are guaranteed against defects in material and workmanship under normal use for the life of the part.:

2	RTC36165	TCU36165	Bed Knife - Razor Tool Steel 22 - Low Cut	1	
---	-----------------	----------	---	---	--

Service Tools

4	R101278T		Bedknife Screw Driver Tool	1	
---	-----------------	--	----------------------------	---	--

Tech Note: Easily install and remove bed knife screws with the help of a ratchet. Tool manufactured with hardened alloy steel.:

Detail Description: Easily install and remove bed knife screws with the help of a ratchet. Tool manufactured with hardened alloy steel.:

Other Parts Available

20	R40M7080	40M7080, ET11059	Ring - Snap	1	
21	RET11053	ET11053	Spring - Reel	1	
22	RAMT2798	AMT2798	Handle - Adjuster	2	
23	RET11070	ET11070	Spring - Bed Bar	2	
24	RET11372	ET11372	Bolt - Adjusting Bed Bar	2	
26	RET11073	ET11073	Seal - Reel Outer	1	
27	RP44946	P44946	Bushing - Bronze	2	
28	RET11371	ET11371	Screw - Special	2	
29	R302-5	JD7797, JD7842, JD7844	Fitting - Grease	6	

All original equipment manufacturers names and part numbers are used for identification purposes only, and we are in no way implying that our products are original equipment parts. Prices subject to change without notice.



Replaces John Deere 220SL Walking Greens Mower Parts

Cutting Unit
Reel & Bedknife



Item No	R&R Part No.	OEM Part No.	Description	Qty Req	Order Quantity
30	R500610	AMT1108	Tapered Bearing Set - Cup and Cone	2	
<i>Detail Description: Includes:RAMT1108 & RMT2108:</i>					
31	RM44162	M44162	O-Ring - Reel	1	
32	R49M7049	49M7049	Key - 5mm x 22mm	1	
33	RMT1160	MT1160	Seal - Reel	2	
34	RMT2108	MT2108	Tapered Bearing Cup	2	
35	RAMT1108	AMT1108	Tapered Bearing Cone	2	
36	R19M7881	19M7881	Bolt - Hex HD M8-1.25 x 20	6	
37	RET11356	ET11356	Nut - Adjusting	2	
38	R24M7036	24M7036	Washer - Flat 8mm Zinc	2	
39	R03M7222	03M7222	Bolt - Carriage M6-1.0 x 20	2	
40	R14M7397	14M7397, 14M7463	Locknut - 6mm x 1.0 ESNA Flanged	4	
41	RUC16469	MT6952, UC16469	Clamp	2	
42	R19M7866	19M7866	Bolt - Flanged Hex M8-1.25 x 20	2	
43	R101278	21M7194	Screw - Bedknife	13	
44	RTC26729	TCU26729	Tube	1	
45	RET14917	ET14917	Spacer	1	
46	RTCA16595	TCA16595	Chain - Rear Roller	1	
47	RET11368	ET11368	Spacer	1	
48	RET11464	ET11464	Spacer	2	

All original equipment manufacturers names and part numbers are used for identification purposes only, and we are in no way implying that our products are original equipment parts. Prices subject to change without notice.



Replaces John Deere 220SL Walking Greens Mower Parts

*Cutting Unit
Reel & Bedknife*



Item No	R&R Part No.	OEM Part No.	Description	Qty Req	Order Quantity
49	RTCU29522	TCU29522	Grass Deflector	1	
50	RTCU29523	TCU29523	Grass Deflector	1	
51	RUC13425	UC13425	Rod - Hardened	1	
52	RTCU25398	TCU25398	Compression Spring	1	
53	RTCA16596	TCA16596	Roller Chain #35	1	
54	RUC16110	UC16110	Clamp	2	
55	RMT74	MT74	Bushing - Roller Bkt	2	
56	RET11367	ET11367	Cap Screw - Special	1	
57	RAUC13515	AUC13515	Adjuster	2	
58	RET14707	ET14707	Verti-Cut Blade - .025 x 2.375	75	
59	R14M7306	14M7306	Nut - M20-1.5	1	
60	RET16679	ET16679	Washer - Spring	8	
61	RM148268	M148268	Lock Nut	2	
62	RUC16102	TCU24949, UC16102	Cap	2	
63	RTCU40491	TCU24683, TCU40491	Worm Gear	2	
64	RTCU26458	TCU26458	Worm Gear	2	
65	R14M7152	14M7152	Nut - 10mm x 1.5 Jam	2	
66	R03M7221	03M7221	Bolt - Carriage M6 x 16	8	
67	R24M7139	24M7139	Washer - Flat 6mm	2	
68	RN198341	N198341	Nut - Nyloc 7/8-14	1	
69	RSW35OLUS	SW35OLUS	Chain Link - Offset #35	1	

All original equipment manufacturers names and part numbers are used for identification purposes only, and we are in no way implying that our products are original equipment parts. Prices subject to change without notice.



Replaces John Deere 220SL Walking Greens Mower Parts

*Cutting Unit
Reel & Bedknife*



Item No	R&R Part No.	OEM Part No.	Description	Qty Req	Order Quantity
70	RSW35COUS	SW35COUS	Chain Link - Coupler #35	1	

All original equipment manufacturers names and part numbers are used for identification purposes only, and we are in no way implying that our products are original equipment parts. Prices subject to change without notice.