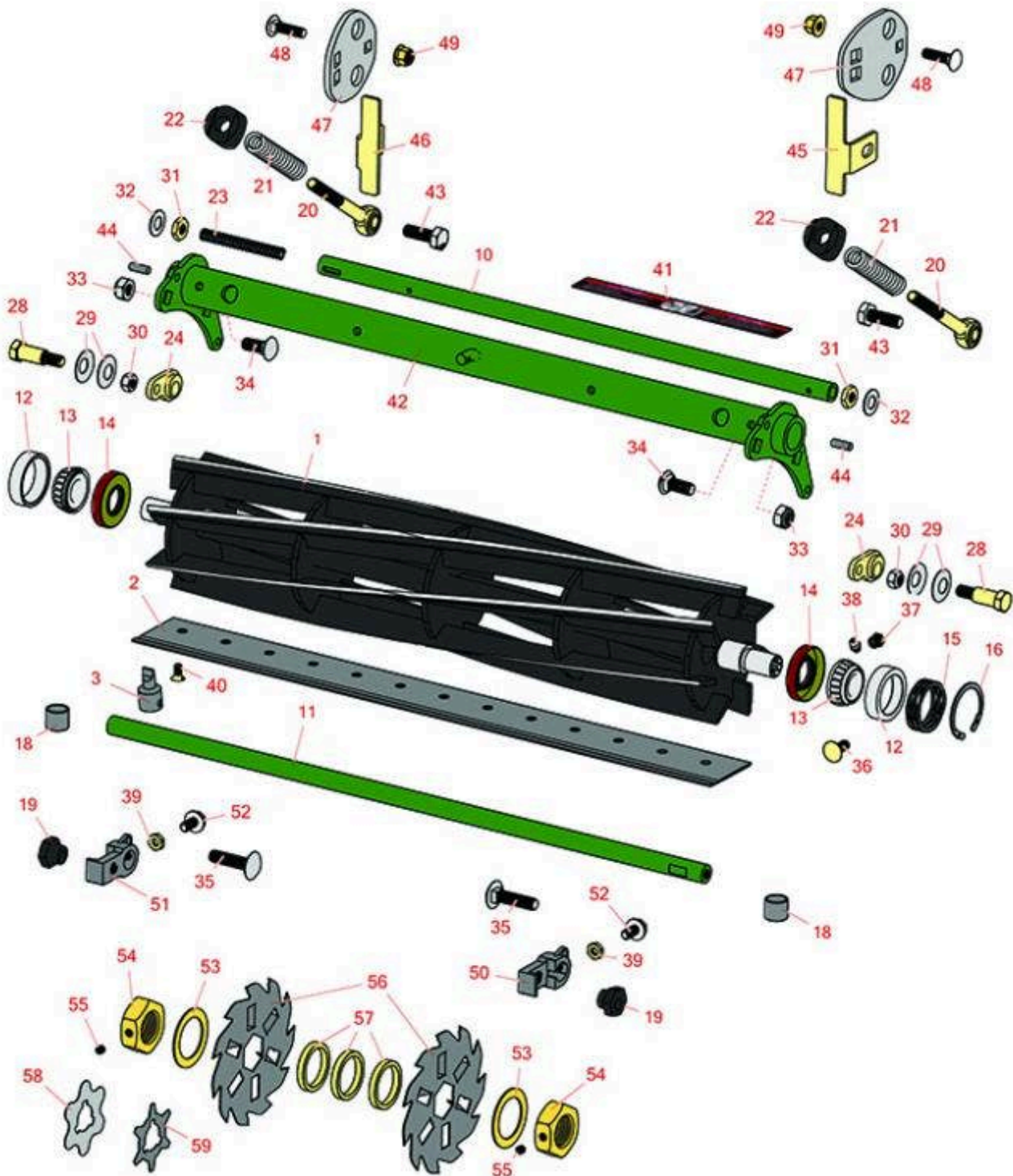




Replaces John Deere 2700 E-Cut Riding Greens Mower Parts

Cutting Unit
Reel & Bedknife



All original equipment manufacturers names and part numbers are used for identification purposes only, and we are in no way implying that our products are original equipment parts. Prices subject to change without notice.



Replaces John Deere 2700 E-Cut Riding Greens Mower Parts

Cutting Unit
Reel & Bedknife



Item No	R&R Part No.	OEM Part No.	Description	Qty Req	Order Quantity
R&R Reels, Lifetime Guaranteed					
1	RTCA19350	TCA19350	Reel - 7 Blade	1	
1	R130239		Reel - 9 Blade with Internal Splines	1	
1	RTCA19351	TCA19351	Reel - 11 Blade	1	
1	R130250	TCA23621	Reel - 14 Blade	1	
R&R Bedknives, Lifetime Guaranteed					
2	RET17767	ET17767, UC23562	Bedknife - High Cut 5/16	1	
2	RET17532	ET11066, ET17532	Bedknife - Fairway .189 Min	1	
2	RET17533	ET14402, ET17533, ET17767, MT4869, MT7351, UC18873	Bedknife - 22in Standard- .126 Min. HOC	1	
2	RET17534	ET17534	Bedknife - 22in Tounament- .098 Min HOC	1	
2	RMT7351	ET17489, MT7351, UC19154, UC28163	Bedknife - 22in Lo-Cut .079 Min. HOC	1	
R&R Razor Tool Steel Bedknives, Lifetime Guaranteed					
2	R130130		Bedknife - Razor Tool Steel - 22 High Cut	1	
2	R130115		Bedknife - Razor Tool Steel - 22 Micro Cut	1	
2	R130116	MT4846, UC18877	Bedknife - Razor Tool Steel - 22 Tournament Cut	1	

All original equipment manufacturers names and part numbers are used for identification purposes only, and we are in no way implying that our products are original equipment parts. Prices subject to change without notice.



Replaces John Deere 2700 E-Cut Riding Greens Mower Parts

Cutting Unit
Reel & Bedknife



Item No	R&R Part No.	OEM Part No.	Description	Qty Req	Order Quantity
---------	--------------	--------------	-------------	---------	----------------

Service Tools

3	R101278T		Bedknife Screw Driver Tool	0	
---	-----------------	--	----------------------------	---	--

Tech Note: Easily install and remove bed knife screws with the help of a ratchet. Tool manufactured with hardened alloy steel.:

Other Parts Available

10	RTCUC26729	TCUC26729	Tube	1	
----	-------------------	-----------	------	---	--

11	RTCUC26727	TCUC26727	Rod	1	
----	-------------------	-----------	-----	---	--

11	RUC13425	UC13425	Rod - Hardened	1	
----	-----------------	---------	----------------	---	--

12	R254-79	JD8226	Cup - Bearing	2	
----	----------------	--------	---------------	---	--

Tech Note: Use R254-79M installation mandrel to properly install race.:

13	R254-78	JD8188	Tapered Bearing Cone	2	
----	----------------	--------	----------------------	---	--

14	RET14566	ET14566	Seal - Reel	2	
----	-----------------	---------	-------------	---	--

15	RTCUC23880	TCUC23880, TCUC28964	Compression Spring - Reel Bearing	1	
----	-------------------	-------------------------	-----------------------------------	---	--

16	R40M7226	40M1862, 40M7226	Ring - Retaining	2	
----	-----------------	---------------------	------------------	---	--

18	RMT74	MT74	Bushing - Roller Bkt	2	
----	--------------	------	----------------------	---	--

19	RTCUC28635	TCUC24555, TCUC28635	Eccentric	2	
----	-------------------	-------------------------	-----------	---	--

20	RTCUC25223	TCUC25223, TCUC30798	Spherical Rod End	2	
----	-------------------	-------------------------	-------------------	---	--

21	RTCUC24954	TCUC24954	Compression Spring	2	
----	-------------------	-----------	--------------------	---	--

22	RTCUC25394	TCUC25394, TCUC27453	Base	2	
----	-------------------	-------------------------	------	---	--

23	RTCUC25398	TCUC25398	Compression Spring	1	
----	-------------------	-----------	--------------------	---	--

All original equipment manufacturers names and part numbers are used for identification purposes only, and we are in no way implying that our products are original equipment parts. Prices subject to change without notice.



Replaces John Deere 2700 E-Cut Riding Greens Mower Parts

*Cutting Unit
Reel & Bedknife*



Item No	R&R Part No.	OEM Part No.	Description	Qty Req	Order Quantity
24	RTC24334	TCU24334	Retainer	2	
28	RMT3016	MT3016	Bolt - Bed Bar	2	
29	RN168012	N168012	Washer - Spring	4	
30	RH137328	H137328	Locknut	5	
31	R14M7152	14M7152	Nut - 10mm x 1.5 Jam	2	
32	RET16679	ET16679	Washer - Spring	2	
33	R14M7517	14M7517	Locknut - 10mm x 1.5 ESNA	2	
34	R03M7191	03M7191	Bolt - Carriage M10 x 25	4	
35	R03M7194	03M7194	Bolt	2	
36	R03M7184	03M7184	Bolt - Carriage M8	2	
37	R170714	E14814	Fitting - Pressure Relief	2	
38	R302-5	JD7797, JD7842, JD7844	Fitting - Grease	2	
39	R14M7151	14M7151	Nut - Jam Roller Adj	2	
40	R101278	21M7194	Screw - Bedknife	13	
41	RMT6517	MT6517	Label - Warning	1	
42	RAUC13891	AUC13891	Frame	1	
43	R19M7168	19M7168	Bolt - M10-1.5 x 30 mm Hex Head Class 8.8	2	
44	RR30587	30587, R30587	Pin - Dowell 1/4 Dia. x .75	4	
45	RUC27760	UC27760	Wear Plate	1	
46	RUC27761	UC27761	Wear Plate	1	

All original equipment manufacturers names and part numbers are used for identification purposes only, and we are in no way implying that our products are original equipment parts. Prices subject to change without notice.



Replaces John Deere 2700 E-Cut Riding Greens Mower Parts

*Cutting Unit
Reel & Bedknife*



Item No	R&R Part No.	OEM Part No.	Description	Qty Req	Order Quantity
47	RUC11904	UC11904	Bracket	2	
48	R03M7186	03M7186	Bolt - Carriage 8-1.25 x 30mm	2	
49	R14M7396	14M7396	Locknut - Flanged Nyloc	2	
50	RUC18211	UC18211	Bracket	1	
51	RUC16109	UC16109	Bracket	1	
52	R33114-016	19M7162	Bolt - Hx HD 8mm x 1.25 x 15	2	
53	R24H1513	24H1513	Washer	2	
54	RET17053	ET17053	Nut - 1-1/8-7 Jam Incl Set Screw	2	
55	R3245-35	22H841	Screw - Set 1/4-28 x 1/4	2	
56	R150209C	TCU26776	Verti-Cut Blade - Carbide Tipped 2mm	27	
57	RET17713	ET17713	Spacer - Vertical Mower Shaft	3	
58	RMT2624	MT2624	Knife - Greens Conditioner	38	
59	RET14707	ET14707	Verti-Cut Blade - .025 x 2.375	72	

All original equipment manufacturers names and part numbers are used for identification purposes only, and we are in no way implying that our products are original equipment parts. Prices subject to change without notice.