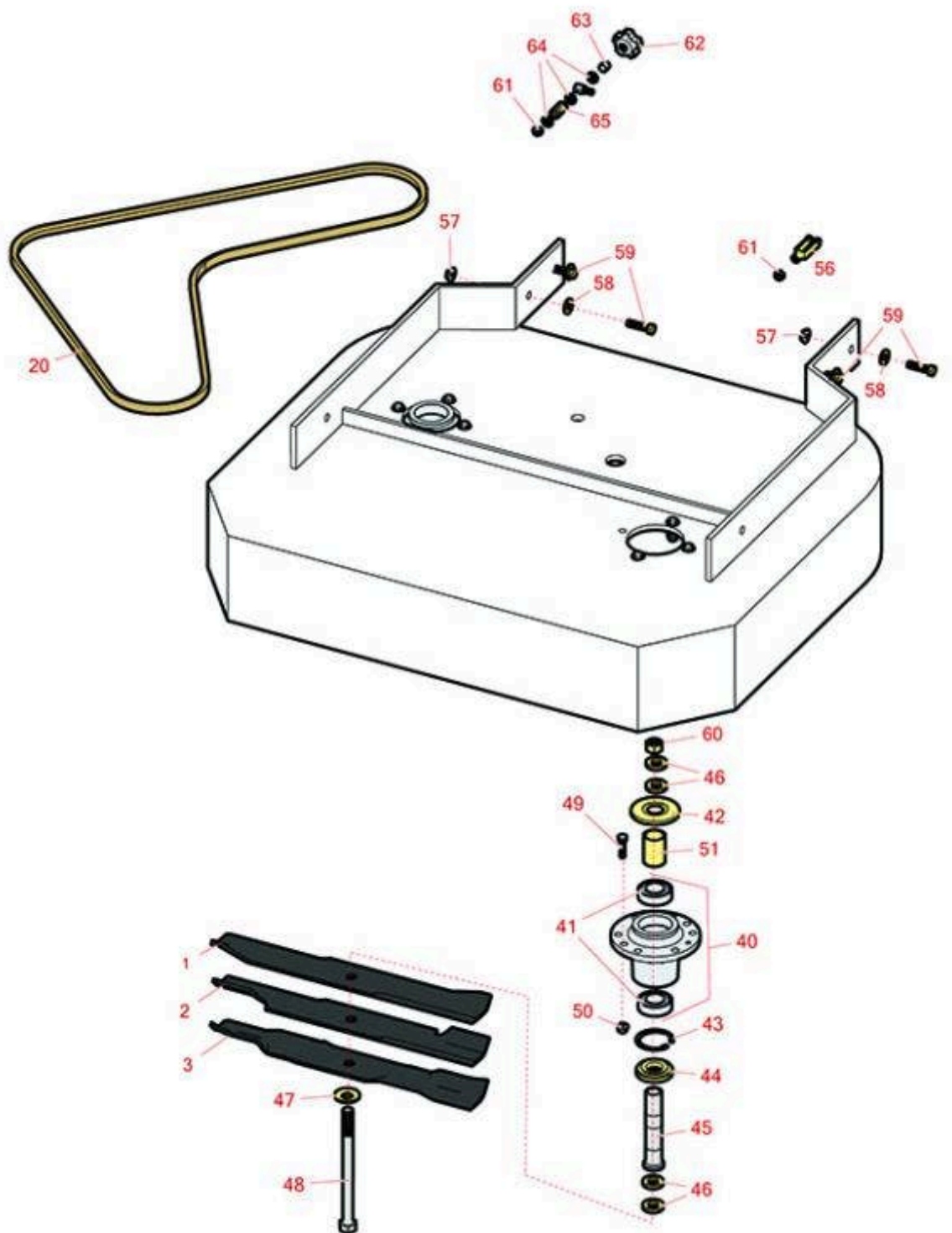




Replaces Exmark Viking Parts

Walk Behind Mower - Model VHS481GKA36200 with 36in
Deck
36in Deck



All original equipment manufacturers names and part numbers are used for identification purposes only, and we are in no way implying that our products are original equipment parts. Prices subject to change without notice.



Replaces Exmark Viking Parts

Walk Behind Mower - Model VHS481GKA36200 with 36in Deck
36in Deck



| Item No | R&R Part No. | OEM Part No. | Description | Qty Req | Order Quantity |
|---------|--------------|--------------|-------------|---------|----------------|
|---------|--------------|--------------|-------------|---------|----------------|

Rotary Blades

| | | | | | |
|---|---------------------|-------------------------|--|---|--|
| 1 | R103-1578 | 103-1578 | Mower Blade - 18 in Solid | 2 | |
| 2 | RRB3065-1800 | 103-6584, 103-6584-S | Mower Blade - High-Lift 18 x 2.5in x 5/8 Mt Hole | 2 | |

Detail Description: R&R Products rotary blades are manufactured in the USA with superior alloy steel and hardened for extended life. Lifetime guaranteed against defects in material and workmanship.:

| | | | | | |
|---|---------------------|-------------------------|---|---|--|
| 3 | RRB5360-1800 | 103-6582, 103-6582-S | Mower Blade - Wave Mulcher 18 x 2.5in x 5/8 Mt Hole | 2 | |
|---|---------------------|-------------------------|---|---|--|

Belts

| | | | | | |
|----|------------------|----------|------------------------|---|--|
| 20 | R1-323735 | 1-323735 | Belt - Drive to Blades | 1 | |
|----|------------------|----------|------------------------|---|--|

Other Parts Available

| | | | | | |
|----|------------------|----------|-----------------------------------|----|--|
| 40 | R103-8280 | 103-8280 | Spindle Assy w/Bearings | 2 | |
| 41 | R103-2477 | 103-2477 | Bearing - Jackshaft | 4 | |
| 42 | R103-1330 | 103-1330 | Guard - Bearing - Top | 2 | |
| 43 | RC-10025 | 32120-8 | Ring - Retaining | 2 | |
| 44 | R103-2535 | 103-2535 | Spacer-Guard, Bottom | 2 | |
| 45 | R1-323529 | 1-323529 | Tube - Spindle - Short | 2 | |
| 46 | R1-323539 | 1-323539 | Spacer | 8 | |
| 47 | R1-513208 | 1-513208 | Washer - Spring | 2 | |
| 48 | R1-800861 | 1-800861 | Bolt - 5/8-18x8 Hex Hx GR5 | 2 | |
| 49 | R400190 | 322-6 | Bolt - Hex HD 5/16-18 x 1-1/4 GR5 | 8 | |
| 50 | R445722 | 32128-20 | Nut - Serrated Washer | 22 | |
| 51 | R103-2534 | 103-2534 | Spacer - Bearing | 2 | |

All original equipment manufacturers names and part numbers are used for identification purposes only, and we are in no way implying that our products are original equipment parts. Prices subject to change without notice.



Replaces Exmark Viking Parts

Walk Behind Mower - Model VHS481GKA36200 with 36in
Deck
36in Deck



| Item No | R&R Part No. | OEM Part No. | Description | Qty Req | Order Quantity |
|---------|------------------|-------------------------------|----------------------------------|---------|----------------|
| 56 | R282-2 | 1-303105 | Yoke | 1 | |
| 57 | R32128-43 | 32128-43, 3290-357 | Nut - Flanged Whiz - 3/8-16 | 8 | |
| 58 | R98-5975 | 98-5975 | Washer - Belleville | 9 | |
| 59 | R323-8 | 323-8 | Bolt - Hex HD 3/8-16 x 1-1/2 GR8 | 8 | |
| 60 | R3219-6 | 3219-6 | Nut - 5/8-18 Gr 8 Hex | 2 | |
| 61 | R3219-2 | 3219-2 | Nut - 5/16-24 Zinc | 7 | |
| 62 | R103-3060 | 103-3060 | Knob - Tracking | 1 | |
| 63 | R1-603903 | 1-603903 | Spacer | 1 | |
| 64 | R453009 | 3256-2, 3256-3, 3256-67 | Washer - Flat 5/16 SAE | 6 | |
| 65 | R1-323245 | 1-323245 | Spring - Compression | 1 | |

All original equipment manufacturers names and part numbers are used for identification purposes only, and we are in no way implying that our products are original equipment parts. Prices subject to change without notice.