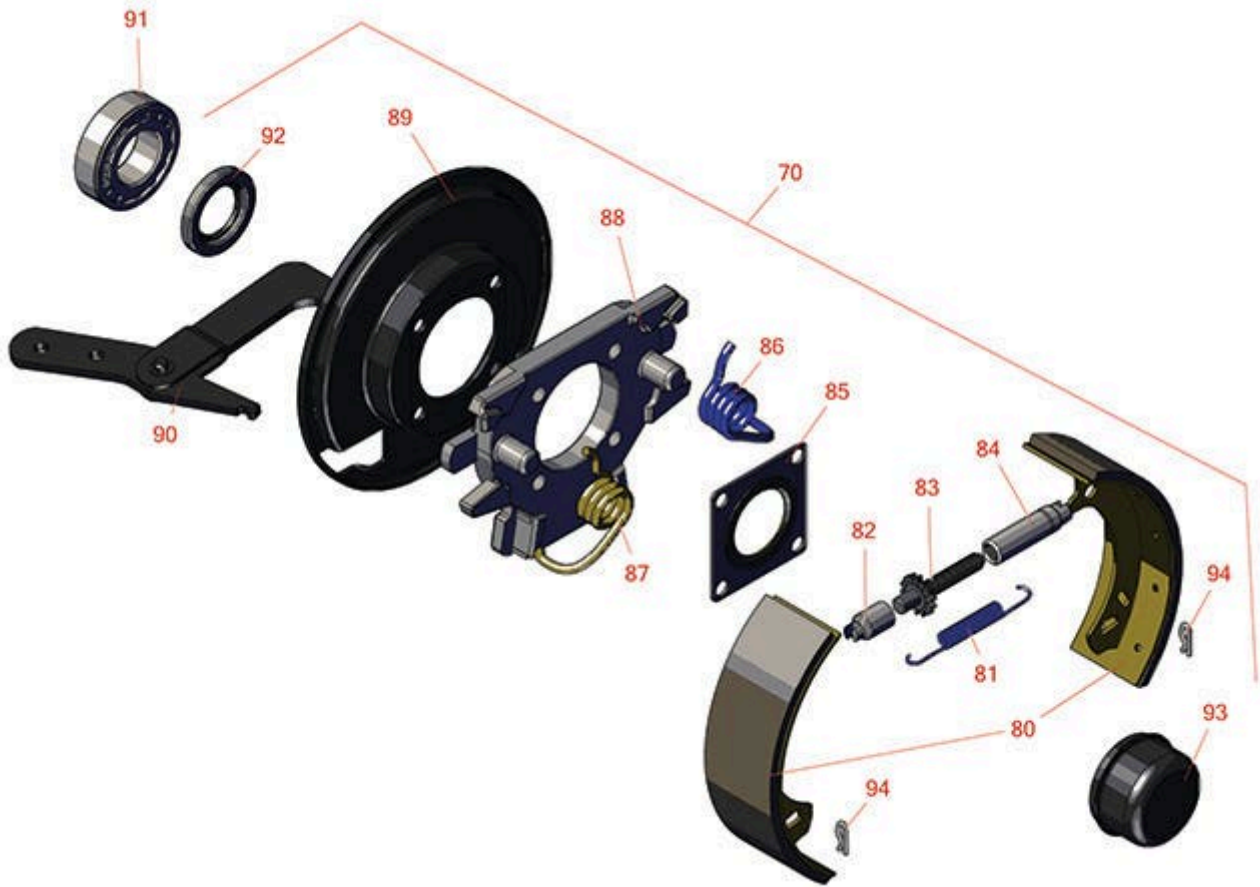




# Replaces Toro Groundsmaster 1000L

## Parts

*Traction Unit  
Brakes*



All original equipment manufacturers names and part numbers are used for identification purposes only, and we are in no way implying that our products are original equipment parts. Prices subject to change without notice.



# Replaces Toro Groundsmaster 1000L

## Parts

*Traction Unit  
Brakes*



Item No	R&R Part No.	OEM Part No.	Description	Qty Req	Order Quantity
70	<b>R150315</b>		Brake Assy	2	
80	<b>R84-8600</b>	84-8590, 84-8600	Shoe - Brake Set/4	1	
81	<b>R21-9440</b>	21-9440, 40473	Spring	2	
82	<b>R21-9390</b>	21-9390, 40458	Socket	2	
83	<b>R21-9370</b>	21-9370, 40456	Screw - Adjustment	2	
84	<b>R21-9380</b>	21-9380, 40457	Nut - Pivot	2	
85	<b>R28-0670</b>	28-0670, 40450	Seal - Oil Axle	2	
86	<b>R21-9420</b>	21-9420, 40471	Spring - Return LH	2	
87	<b>R21-9430</b>	21-9430, 40472	Spring - Return RH	2	
88	<b>R43-6810</b>	40-2190, 43-6810	Spider - Torque	2	
89	<b>R21-9450</b>	21-9450	Shield - Dust	2	
90	<b>R24-9180</b>	21-9400, 24-9180	Lever - Parking Brake	2	
91	<b>R21-8180</b>	21-8180, 32-8800, 40453	Bearing - with Cup Front Axle	2	
92	<b>R92-1774</b>	21-8330, 92-1774	Seal - Oil Front Axle	2	

All original equipment manufacturers names and part numbers are used for identification purposes only, and we are in no way implying that our products are original equipment parts. Prices subject to change without notice.



# Replaces Toro Groundsmaster 1000L

## Parts

*Traction Unit  
Brakes*



Item No	R&R Part No.	OEM Part No.	Description	Qty Req	Order Quantity
93	R241-119	01-269-0070, 01-269-0280, 01-286-0040, 241-119, 30-9930, 40438	Cap-Dust	2	
94	R21-9460	21-9460, 40474	Retainer	2	

All original equipment manufacturers names and part numbers are used for identification purposes only, and we are in no way implying that our products are original equipment parts. Prices subject to change without notice.