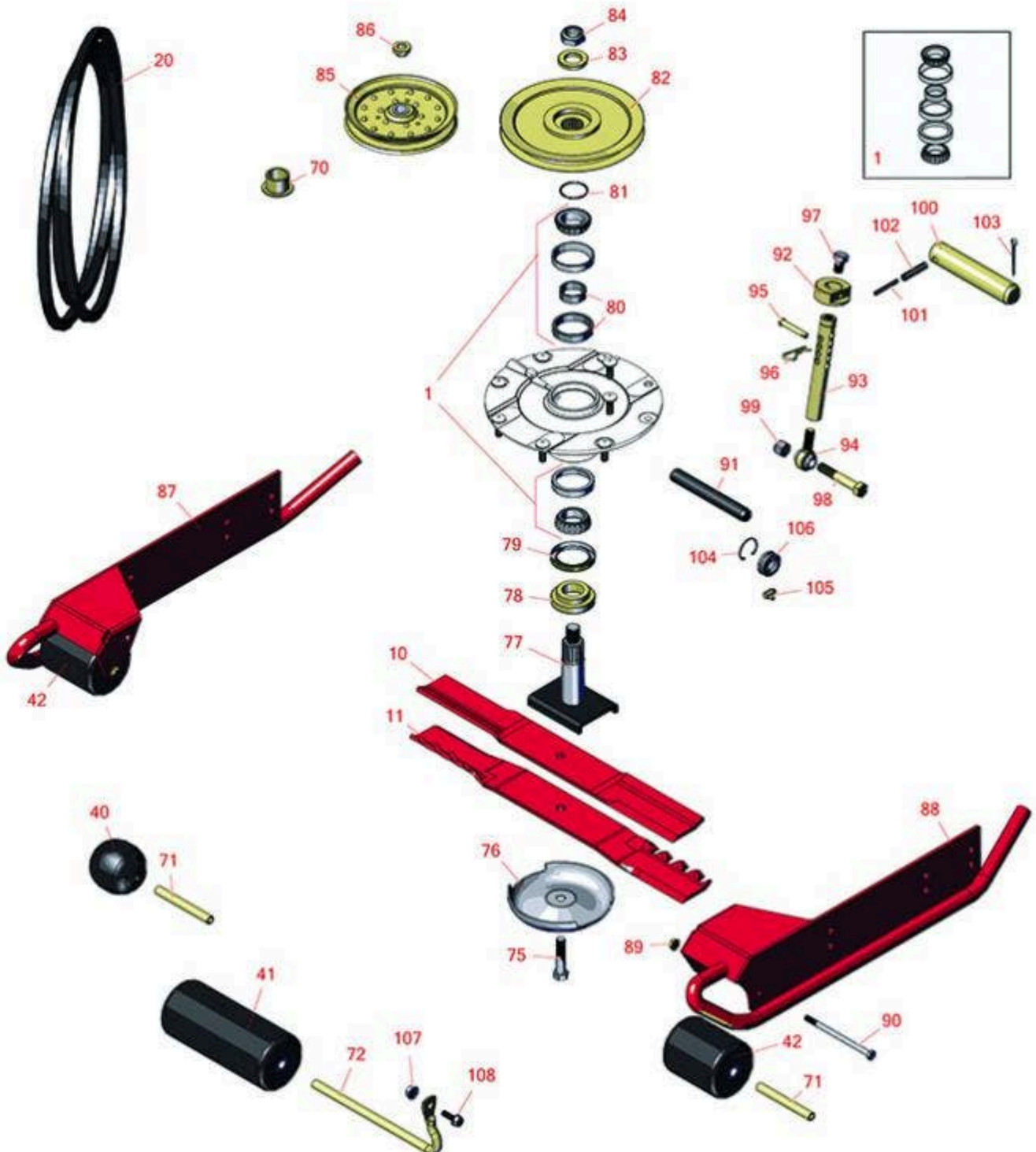




# Replaces Toro Groundsmaster 3280-D

## Parts

62in Rotary Deck - Model 30367  
Deck Parts



All original equipment manufacturers names and part numbers are used for identification purposes only, and we are in no way implying that our products are original equipment parts. Prices subject to change without notice.



# Replaces Toro Groundsmaster 3280-D Parts

62in Rotary Deck - Model 30367  
Deck Parts



Item No	R&R Part No.	OEM Part No.	Description	Qty Req	Order Quantity
<b>Overhaul Kits</b>					
1	<b>R110-8297</b>	110-8297, 26-1830	Bearing Set w/Retaining Rings - Spindle	3	
<b>Rotary Blades</b>					
10	<b>R92-5608</b>	92-5608, 92-5608-03	Mower Blade - 21.75 in	3	
11	<b>R92-5608M</b>	104-1303, 107-0214-03	Mower Blade - Mulcher 21.75	3	
<b>Belts</b>					
20	<b>R107-4788</b>	107-4788	Belt- Deck - Double Hex	1	
<b>Rollers</b>					
40	<b>R29-4820</b>	29-4820	Roller	2	
41	<b>R68-6710</b>	68-6710	Roller - Rotary Deck	1	
42	<b>R93-4803</b>	93-4803	Roller - Deck	2	
<b>Other Parts Available</b>					
70	<b>R93-4510</b>	93-4510	Bushing	2	
70	<b>R94-1291</b>	94-1291	Bushing - Flanged	2	
71	<b>R105-4549</b>	105-4549	Spacer - Deck Roller	1	
72	<b>R68-6840</b>	68-6840	Shaft - Roller	1	
75	<b>R92-5816</b>	92-5816	Bolt - Hex HD 1/2-20 x 2-1/4	3	
76	<b>R72-9361</b>	27-1000, 27-1001, 72-9360, 72-9361	Cup - Anti-Scalp	3	
77	<b>R104-3554</b>	104-3554	Shaft - Spindle Assy.	3	

All original equipment manufacturers names and part numbers are used for identification purposes only, and we are in no way implying that our products are original equipment parts. Prices subject to change without notice.



# Replaces Toro Groundsmaster 3280-D Parts

62in Rotary Deck - Model 30367  
Deck Parts



Item No	R&R Part No.	OEM Part No.	Description	Qty Req	Order Quantity
78	<b>R92-9800</b>	69-6950, 69-6980, 92-9800	Spacer - Spindle	3	
79	<b>R253-154</b>	253-154	Seal - Spindle	3	
80	<b>R104-3549</b>	104-3549	Spacer Set - Spindle Bearing	3	
81	<b>R106-7159</b>	106-7159	O-Ring	3	
82	<b>R104-3546</b>	104-3546	Pulley - Lower Driven	3	
83	<b>R104-8322</b>	104-8322, 120-5576	Washer - Spindle Shaft Hardened	1	
84	<b>R32127-46</b>	32127-46, 3296-60	Locknut	3	
85	<b>R01-268-0160</b>	01-268-0160	Pulley - V Idler	2	
86	<b>R108-1924</b>	108-1924	Spacer-Idler	2	
87	<b>R100-5605-01</b>	100-5605-01	Skid Assy - RH	1	
88	<b>R100-5612-01</b>	100-5612-01	Skid Assy - LH	1	
89	<b>R104-8300</b>	104-8300, 104-8300 , 119-4041	Locknut - 5/16-18 Flanged Y/Zinc	2	
90	<b>R322-29</b>	322-29	Bolt - Hex HD 5/16-18 x 5 GR5	2	
91	<b>R107-7904</b>	107-7904	Pin - Clevis	1	
92	<b>R110-0641</b>	110-0641	Collar - HOC	2	
93	<b>R107-7284</b>	107-7284	Tube - HOC	2	
94	<b>R105-2808</b>	105-2808	Rod End	2	
95	<b>R107-3457</b>	107-3457	Clevis Pin - 5/16 x 1 7/8	2	
96	<b>R3290-467</b>	3290-467	Pin-Hair	2	

All original equipment manufacturers names and part numbers are used for identification purposes only, and we are in no way implying that our products are original equipment parts. Prices subject to change without notice.



# Replaces Toro Groundsmaster 3280-D Parts



62in Rotary Deck - Model 30367  
Deck Parts

Item No	R&R Part No.	OEM Part No.	Description	Qty Req	Order Quantity
97	<b>R3213-20</b>	3213-20	Bolt - 1/2-20 x 3/4 Gr 5 Hex	2	
98	<b>R325-12</b>	01-150-0320, 01-150-0880, 01-178-0824, 20-93-AD, 325-12	Bolt - Hx HD	2	
99	<b>RF5003</b>	32127-29, 32131-5, 32132-5, 3296-23	Locknut - ESNA 1/2-13	2	
100	<b>R98-2330</b>	98-2330	Pin - Pivot Assy	2	
101	<b>R32121-61</b>	32121-61	Pin - Spring Roll 7/32 x 1-3/4	2	
102	<b>R32121-67</b>	32121-67	Pin - Spring Roll 3/8 x 1-3/4	2	
103	<b>R3272-19</b>	3272-19	Pin - Cotter	2	
104	<b>R458461</b>	32151-34	Snap Ring	2	
105	<b>R302-60</b>	302-60	Zerk - Grease 90 Deg.	2	
106	<b>R105-7441</b>	105-7441	Bearing - Spherical	2	
107	<b>R104-8301</b>	104-8301, 104-9301, 109-6658, 133-7570	Locknut - 3/8-16 Nylon Flanged	1	
108	<b>R3234-42</b>	3234-42	Bolt - 3/8-16 x 1 Hx HD Fl	1	

All original equipment manufacturers names and part numbers are used for identification purposes only, and we are in no way implying that our products are original equipment parts. Prices subject to change without notice.