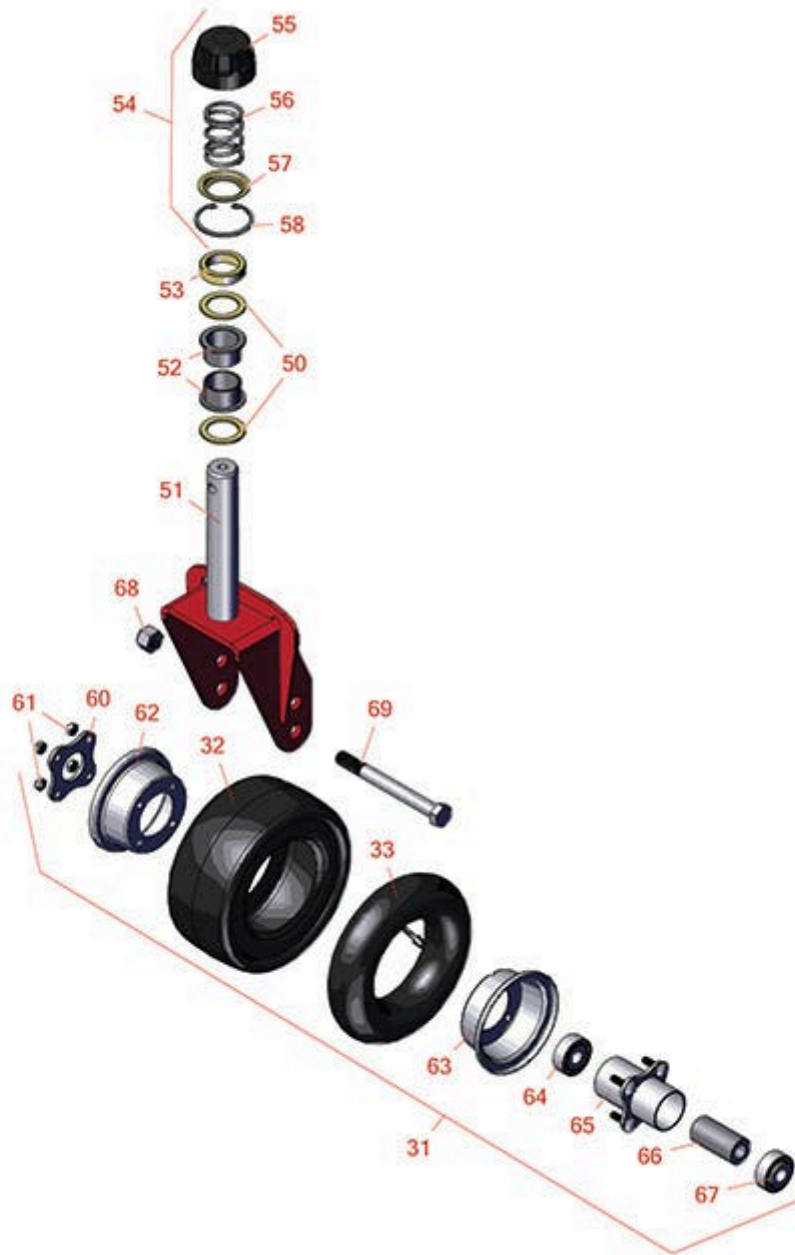




Replaces Toro Groundsmaster 3280-D

Parts

62in Rotary Deck - Model 30403
Caster Wheels



All original equipment manufacturers names and part numbers are used for identification purposes only, and we are in no way implying that our products are original equipment parts. Prices subject to change without notice.



Replaces Toro Groundsmaster 3280-D Parts

62in Rotary Deck - Model 30403
Caster Wheels



Item No	R&R Part No.	OEM Part No.	Description	Qty Req	Order Quantity
Tires & Wheels					
31	R93-9938	86-0020, 93-9938	Wheel Assy - Castor - Pneu 8x3.50-4	2	
32	R93-9939	93-9939, 98-2877	Tire - 8x3.50-4 (4 Ply) Sm Pneu	2	
33	R68-8950	68-8950	Tube - Castor Wheel 9x3.50-4 TR87	2	
Other Parts Available					
50	R69-6860	69-6860	Washer - 1/8 - Caster Wheel	4	
51	R104-0762-01	104-0762-01	Caster Fork	2	
52	R69-6470	69-6470	Bushing - Flanged	4	
53	R69-1510	69-1510	Spacer - 1/2 Caster Fork	10	
54	R92-9727	92-9727	Cap Assy - HOC	2	
55	R92-8861	92-5582, 92-8861	Cap - HOC	2	
56	R92-9726	92-9726	Spring - Compression	2	
57	R92-5583	92-5583	Washer- Cap	2	
58	R92-5581	92-5581	Ring - Retaining	2	
60	R93-4242	93-4242	Plate - Caster Wheel	2	
61	R32128-16	32128-16	Locknut - 5/16-24 Flanged Top	8	
62	R95-2741	137-5552, 95-2741	Rim - Wheel Half w/o Valve Hole	2	
63	R93-4239	93-4239	Rim - Wheel Half w/Valve Hole	2	
65	R93-5980	93-4238, 93-5980	Hub Assy - w/o Bearings/Spacer	2	

All original equipment manufacturers names and part numbers are used for identification purposes only, and we are in no way implying that our products are original equipment parts. Prices subject to change without notice.



Replaces Toro Groundsmaster 3280-D Parts

62in Rotary Deck - Model 30403
Caster Wheels



Item No	R&R Part No.	OEM Part No.	Description	Qty Req	Order Quantity
66	R93-4241	93-4241	Spacer - Caster Wheel	2	
67	R93-4237	93-4237	Bearing	4	
67	R108-9017	108-9017, 120-3366	Bearing-Stainless	4	
68	R3296-53	3296-53	Locknut - 5/8-11 ESNA Yellow	2	
69	R327-24	327-24	Bolt - Hex HD 5/8-11 x 6	2	

All original equipment manufacturers names and part numbers are used for identification purposes only, and we are in no way implying that our products are original equipment parts. Prices subject to change without notice.