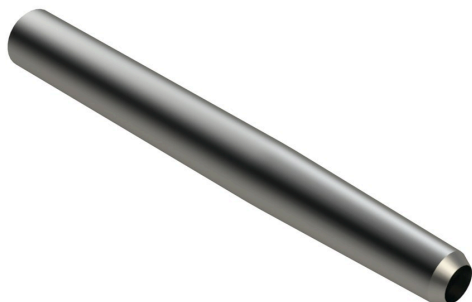




Standard Hollow Tine - .625MT x 5.500L x .520OD R523274



Details

Designed to remove a soil core, R&R Standard Hollow Tines are constructed from case hardened tubular steel and are the most economical tines available. Case hardening hardens the inner and outer surfaces of the tine wall to over RC55 for added wear.

Specifications

Manufacturer	R&R Products
A - Tine Type	Standard Hollow
B - Tine Mounting Dia.	.625 in (15.9mm)
C - Tine Length	5.500 in (140mm)
D - Tine Tip Outside (Hole) Dia.	.520 in (13.2mm)
E - Tine Tip Inside (Core) Dia.	.400 in (10.2mm)
F - Tine Wall Thickness	.049 in (1.2mm)

Fits Models

Ryan GA30

Amacron Golf & Turf

19 Tate Drive Kerang, 3579

+61 2 8011 1001 Toll Free: 1300 AMACRON

<https://amacron.rrproducts.com/>