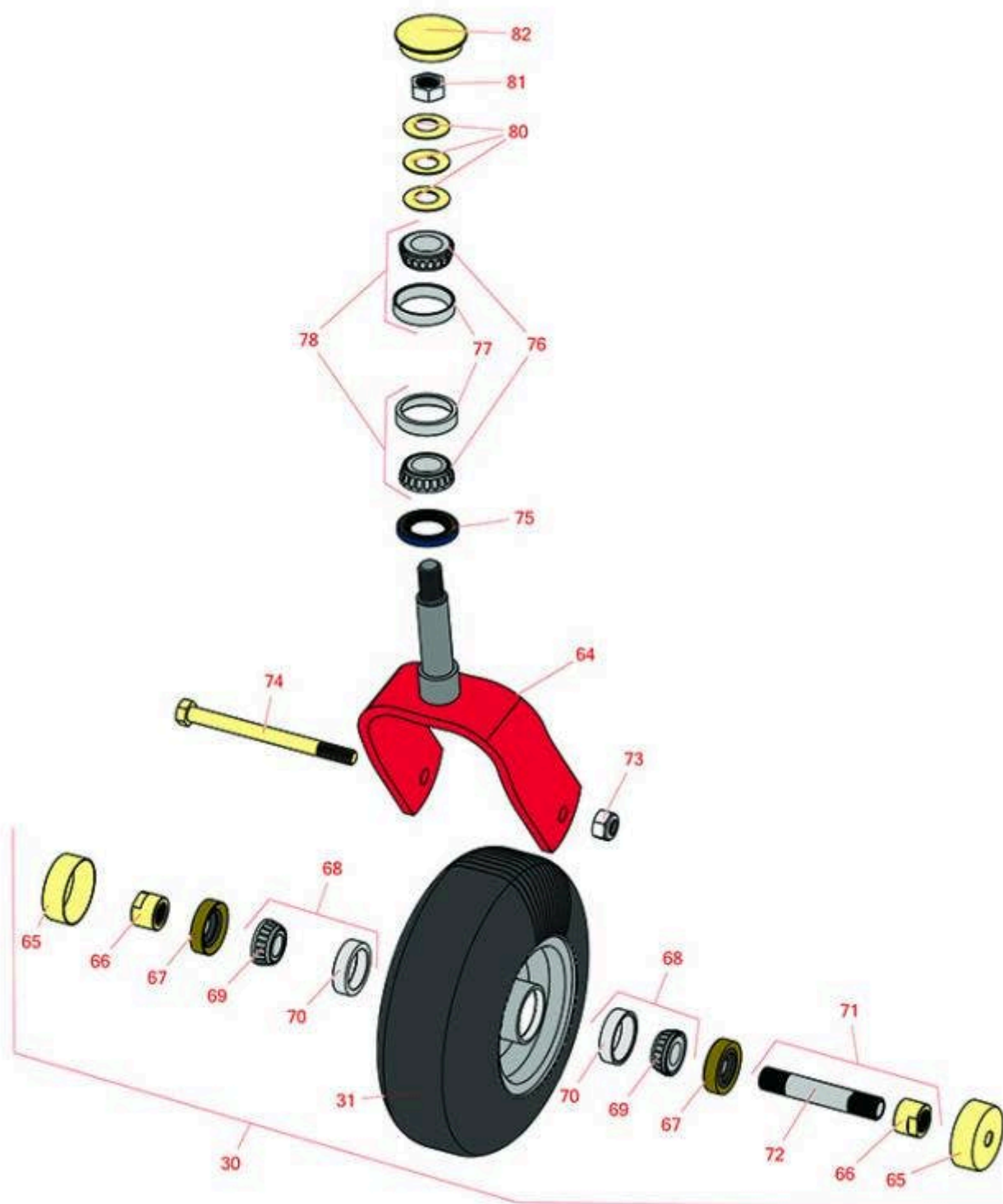




Replaces Exmark Vantage S-Series Parts

Stand-On Mower with 48in Deck - Model VTS691CKA48400
Caster Wheel



All original equipment manufacturers names and part numbers are used for identification purposes only, and we are in no way implying that our products are original equipment parts. Prices subject to change without notice.



Replaces Exmark Vantage S-Series Parts

Stand-On Mower with 48in Deck - Model VTS691CKA48400
Caster Wheel



| Item No | R&R Part No. | OEM Part No. | Description | Qty Req | Order Quantity |
|---------|--------------|--------------|-------------|---------|----------------|
|---------|--------------|--------------|-------------|---------|----------------|

Tires

| | | | | | |
|----|------------------|----------|-----------------------------|---|--|
| 30 | R130-4558 | 112-3810 | Wheel-Tire and Bearing Assy | 2 | |
| 31 | R130-4563 | 110-9965 | Wheel and Tire Assy | 2 | |

Other Parts Available

| | | | | | |
|----|---------------------|-------------------------|-------------------------|---|--|
| 64 | R121-7988-01 | 121-7988-01 | Fork - Caster | 2 | |
| 65 | R103-2768 | 103-2768 | Guard - Seal | 4 | |
| 66 | R103-3051 | 103-3051 | Spacer - Nut - Hardened | 4 | |
| 67 | R103-0063 | 103-0063 | Seal - Grease | 4 | |
| 68 | R500534 | 1-633585, R & R ONLY | Bearing - with Cup | 4 | |

Detail Description: Kit includes: 1 ea R254-78- Bearing Cone & R254-79 Bearing Cone:

| | | | | | |
|----|----------------|-------------------------|----------------------|---|--|
| 69 | R254-78 | 1-633585 | Tapered Bearing Cone | 4 | |
| 70 | R254-79 | 1-633584, R & R ONLY | Cup - Bearing | 4 | |

Detail Description: Use R254-79M installation mandrel to properly install race.:

| | | | | | |
|----|------------------|-------------------------|-----------------------------|---|--|
| 71 | R126-5359 | 126-5359 | Caster Axle Assy w/Bushing | 2 | |
| 72 | R103-3157 | 103-3157 | Axle - Caster Wheel | 2 | |
| 73 | R3296-25 | 3296-45 | Locknut - 1/2-13 Heavy ESNA | 2 | |
| 74 | R325-20 | 325-20 | Bolt - Hx HD 1/2-13 x 6 | 2 | |
| 75 | R116-5647 | 116-5647, R & R ONLY | Seal - Grease | 2 | |
| 76 | R254-94 | 1-543509 | Tapered Bearing Cone | 4 | |
| 77 | R254-72 | 1-543508 | Cup - Bearing | 4 | |

All original equipment manufacturers names and part numbers are used for identification purposes only, and we are in no way implying that our products are original equipment parts. Prices subject to change without notice.



Replaces Exmark Vantage S-Series Parts

Stand-On Mower with 48in Deck - Model VTS691CKA48400
Caster Wheel



| Item No | R&R Part No. | OEM Part No. | Description | Qty Req | Order Quantity |
|---------|------------------|--------------|------------------------------------|---------|----------------|
| 78 | R500596 | R & R ONLY | Tapered Bearing Set - Cup and Cone | 4 | |
| 80 | R1-633508 | 1-633508 | Washer - Spring Disc | 6 | |
| 81 | R3296-51 | 3296-51 | Nut - Nylon Lock 3/4-10 Gr 8 | 2 | |
| 82 | R103-4882 | 103-4882 | Grease Cap - Castor | 2 | |

All original equipment manufacturers names and part numbers are used for identification purposes only, and we are in no way implying that our products are original equipment parts. Prices subject to change without notice.