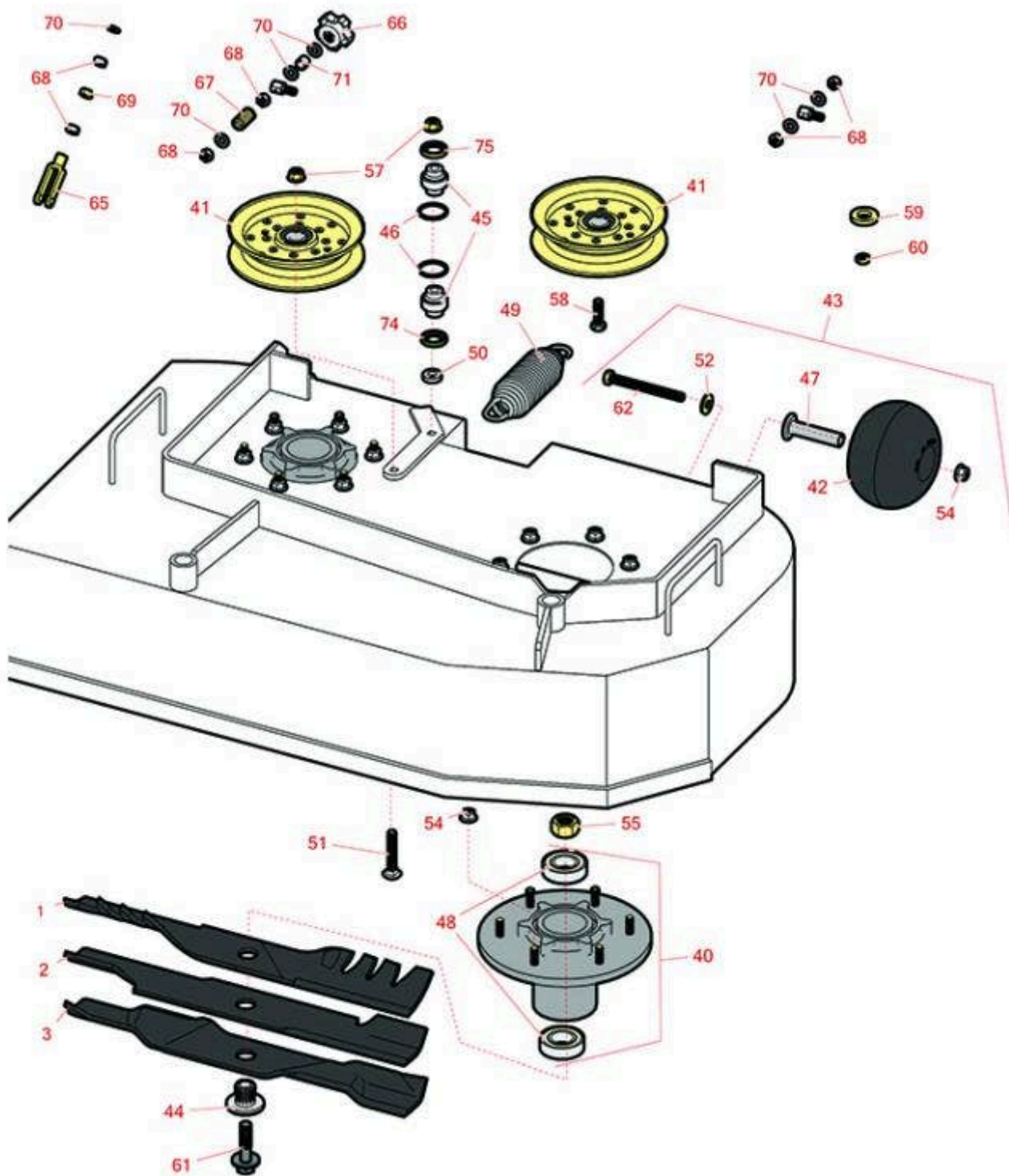




Replaces Exmark Turf Tracer S-Series Parts

Walk Behind Mower - Model TTS600CKA363E0 with 36in
Deck
36in Deck Parts



All original equipment manufacturers names and part numbers are used for identification purposes only, and we are in no way implying that our products are original equipment parts. Prices subject to change without notice.



Replaces Exmark Turf Tracer S-Series Parts

Walk Behind Mower - Model TTS600CKA363E0 with 36in Deck
36in Deck Parts



Item No	R&R Part No.	OEM Part No.	Description	Qty Req	Order Quantity
Rotary Blades					
1	R116-5175	116-5175	Mower Blade - 18 in Mulching	2	
1	RRB4065-1803	116-5175, 116-5175-S	Mower Blade - Mulcher 18 x 2.5in x 15/16 Mt Hole	2	
2	RRB3065-1803	103-6402, 103-6402-S, 106-6402	Mower Blade - High-Lift 18 x 2.5in x 15/16 Mt Hole	2	
<i>Detail Description: R&R Products rotary blades are manufactured in the USA with superior alloy steel and hardened for extended life. Lifetime guaranteed against defects in material and workmanship.:</i>					
3	RRB5360-1803	103-6392, 103-6392-S	Mower Blade - Wave Mulcher 18 x 2.5in x 15/16 Mt Hole	2	
Other Parts Available					
40	R116-3344	116-3344	Spindle Housing Assy	2	
41	R126-9196	126-9196	Idler Pulley - Flat	2	
42	R103-8415	103-8415	Roller - Anti Scalp	1	
43	R116-9981	116-9981	Kit - Anti-Scalp Roller	1	
44	R103-3037	103-3037	Splined Bushing	2	
45	R103-3504	103-3504	Bearing - Spherical	2	
46	R106-7159	106-7159	O-Ring	2	
47	R116-8131	116-8131	Axle - Roller	1	
48	R116-0720	116-0720	Bearing - Ball - Special Triple Seal	4	
49	R116-6317	116-0133, 116-6317	Spring - Extension	1	
50	R5-0652	5-0652	Spacer	1	

All original equipment manufacturers names and part numbers are used for identification purposes only, and we are in no way implying that our products are original equipment parts. Prices subject to change without notice.



Replaces Exmark Turf Tracer S-Series Parts

Walk Behind Mower - Model TTS600CKA363E0 with 36in Deck
36in Deck Parts



Item No	R&R Part No.	OEM Part No.	Description	Qty Req	Order Quantity
51	R3231-7	3231-7	Bolt - Carriage 3/8-16 x 2-1/4	1	
52	R98-5975	98-5975	Washer - Belleville	1	
54	R104-8301	104-8301, 109-6658	Locknut - 3/8-16 Nylon Flanged	13	
55	R116-7306	116-7306	Hex Nut - 3/4-16 with Nyloc	2	
57	R32128-19	104-8301, 32128-19	Locknut - 3/8-16 Flanged Top Lock	2	
58	R400264	323-29, 323-7	Bolt - Hex HD 3/8-16 x 1-1/4	1	
59	R1-323539	1-323539	Spacer	2	
60	R3220-3	3220-3	Nut - Jam Ball Joint	2	
61	R109-9220	109-9220	Bolt - Sems 1/2-20	2	
62	R116-9362	116-9362	Bolt - Hex HD 3/8-16 x 3 3/4 GR8 YZ	1	
65	R282-2	1-303105	Yoke	2	
66	R103-3060	103-3060	Knob - Tracking	1	
67	R1-323245	1-323245	Spring - Compression	1	
68	R3219-2	3219-2	Nut - 5/16-24 Zinc	7	
69	R3220-2	3220-2	Nut - Jam - 5/16-24	2	
70	R453009	3256-2, 3256-3, 3256-67	Washer - Flat 5/16 SAE	9	
71	R1-603903	1-603903	Spacer	1	
74	R103-3505	103-3505	Seal - Double Lip	1	

All original equipment manufacturers names and part numbers are used for identification purposes only, and we are in no way implying that our products are original equipment parts. Prices subject to change without notice.



Replaces Exmark Turf Tracer S-Series Parts

*Walk Behind Mower - Model TTS600CKA363E0 with 36in
Deck
36in Deck Parts*



Item No	R&R Part No.	OEM Part No.	Description	Qty Req	Order Quantity
75	R103-3506	103-3506	Seal - Single Lip	1	

All original equipment manufacturers names and part numbers are used for identification purposes only, and we are in no way implying that our products are original equipment parts. Prices subject to change without notice.