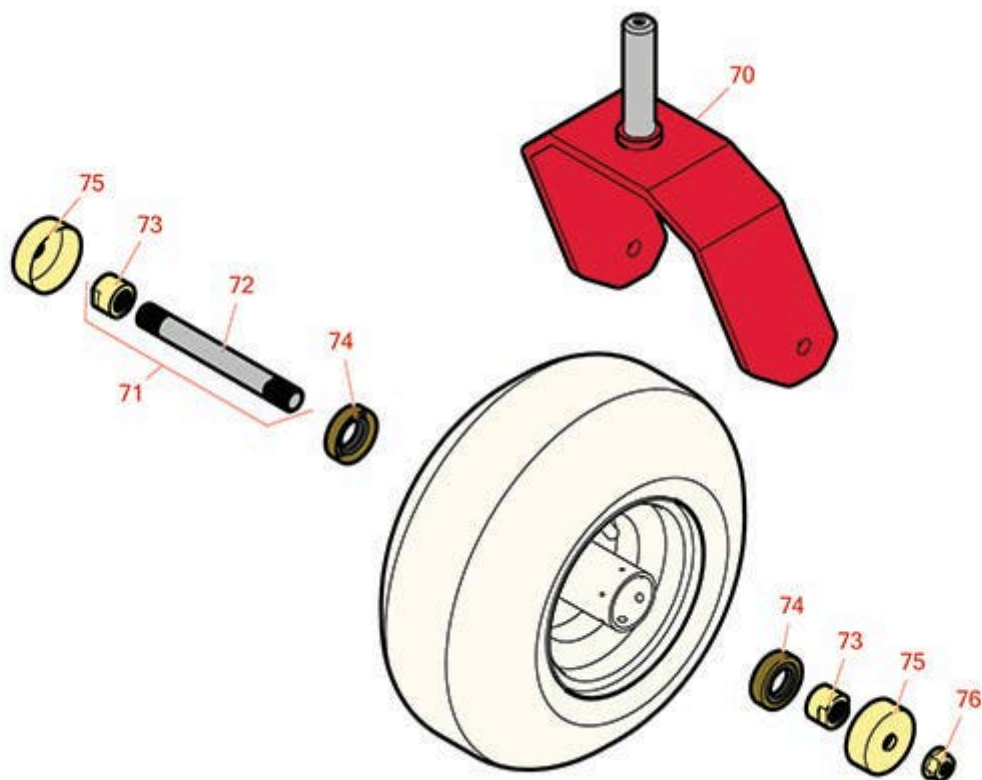




Replaces Toro Z Master 2000 Parts

Zero Turn Mower with 48in Deck - Model 77248

Caster Wheel



All original equipment manufacturers names and part numbers are used for identification purposes only, and we are in no way implying that our products are original equipment parts. Prices subject to change without notice.



Replaces Toro Z Master 2000 Parts

Zero Turn Mower with 48in Deck - Model 77248

Caster Wheel



| Item No | R&R Part No. | OEM Part No. | Description | Qty Req | Order Quantity |
|---------|--------------|--------------|-------------|---------|----------------|
|---------|--------------|--------------|-------------|---------|----------------|

Optional Michelin Tweel Tires

| | | | | | |
|----|-----------|--|--|---|--|
| 30 | RTMT41011 | 109-9127, 126-7592, 126-7753, 127-9526, 127-9528, 127-9540, 139-3604, 139-3639, 140-4896 | Michelin X Tweel Turf Caster Smooth - 13x6.5N6 (5/8in Mount) 290 lb Max Load | 2 | |
|----|-----------|--|--|---|--|

Detail Description: Michelin X Tweel Turf casters replace the existing front casters on zero turn radius mowers, and completely eliminate the risk of flat tires. They have a consistent hub height which helps ensure the mower deck produces an even cut, while the poly-resin spokes help dampen the ride for enhanced operator comfort, even when navigating over curbs and other bumps. They are designed to provide a long wear life.:

| | | | | | |
|----|-----------|---|---|---|--|
| 30 | RTMT73818 | 109-9127, 126-7592, 126-7753, 127-9526, 127-9528, 127-9540, 139-3604, 140-4896 | Michelin X Tweel Turf Caster Grooved - 13x6.5N6 (5/8in Mount) 290 lb Max Load | 2 | |
|----|-----------|---|---|---|--|

Detail Description: Michelin X Tweel Turf casters replace the existing front casters on zero turn radius mowers, and completely eliminate the risk of flat tires. They have a consistent hub height which helps ensure the mower deck produces an even cut, while the poly-resin spokes help dampen the ride for enhanced operator comfort, even when navigating over curbs and other bumps. They are designed to provide a long wear life.:

| | | | | | |
|----|-----------|--|---------------------------------------|---|--|
| 31 | RTMT38182 | | Michelin Spacer - 1/2in ID x 5/8in OD | 4 | |
|----|-----------|--|---------------------------------------|---|--|

Tires & Wheels

| | | | | | |
|----|-------|--|--|---|--|
| 40 | TIRES | | Click Here to View Complete Tire Selection | 0 | |
|----|-------|--|--|---|--|

Other Parts Available

| | | | | | |
|----|--------------|-------------|------------------|---|--|
| 70 | R126-4312-01 | 126-4312-01 | Fork - Caster | 2 | |
| 71 | R126-7796 | 126-7796 | Caster Axle Assy | 2 | |

All original equipment manufacturers names and part numbers are used for identification purposes only, and we are in no way implying that our products are original equipment parts. Prices subject to change without notice.



Replaces Toro Z Master 2000 Parts

Zero Turn Mower with 48in Deck - Model 77248

Caster Wheel



| Item No | R&R Part No. | OEM Part No. | Description | Qty Req | Order Quantity |
|---------|------------------|---|-------------------------------|---------|----------------|
| 72 | R126-5220 | 126-5220 | Axle-Caster | 2 | |
| 73 | R103-3051 | 103-3051 | Spacer - Nut - Hardened | 4 | |
| 74 | R103-0063 | 103-0063 | Seal - Grease | 4 | |
| 75 | R103-2768 | 103-2768 | Guard - Seal | 4 | |
| 76 | R32128-23 | 32128-23, 3218-23, 99-5107 | Nut - Lock Hex Flanged 1/2-13 | 2 | |
| 77 | R254-78 | 01-102-0060, 01-102-0130, 1-633585, 254-78, 32-7790, 32-9580, 93-4813 | Tapered Bearing Cone | 4 | |

All original equipment manufacturers names and part numbers are used for identification purposes only, and we are in no way implying that our products are original equipment parts. Prices subject to change without notice.