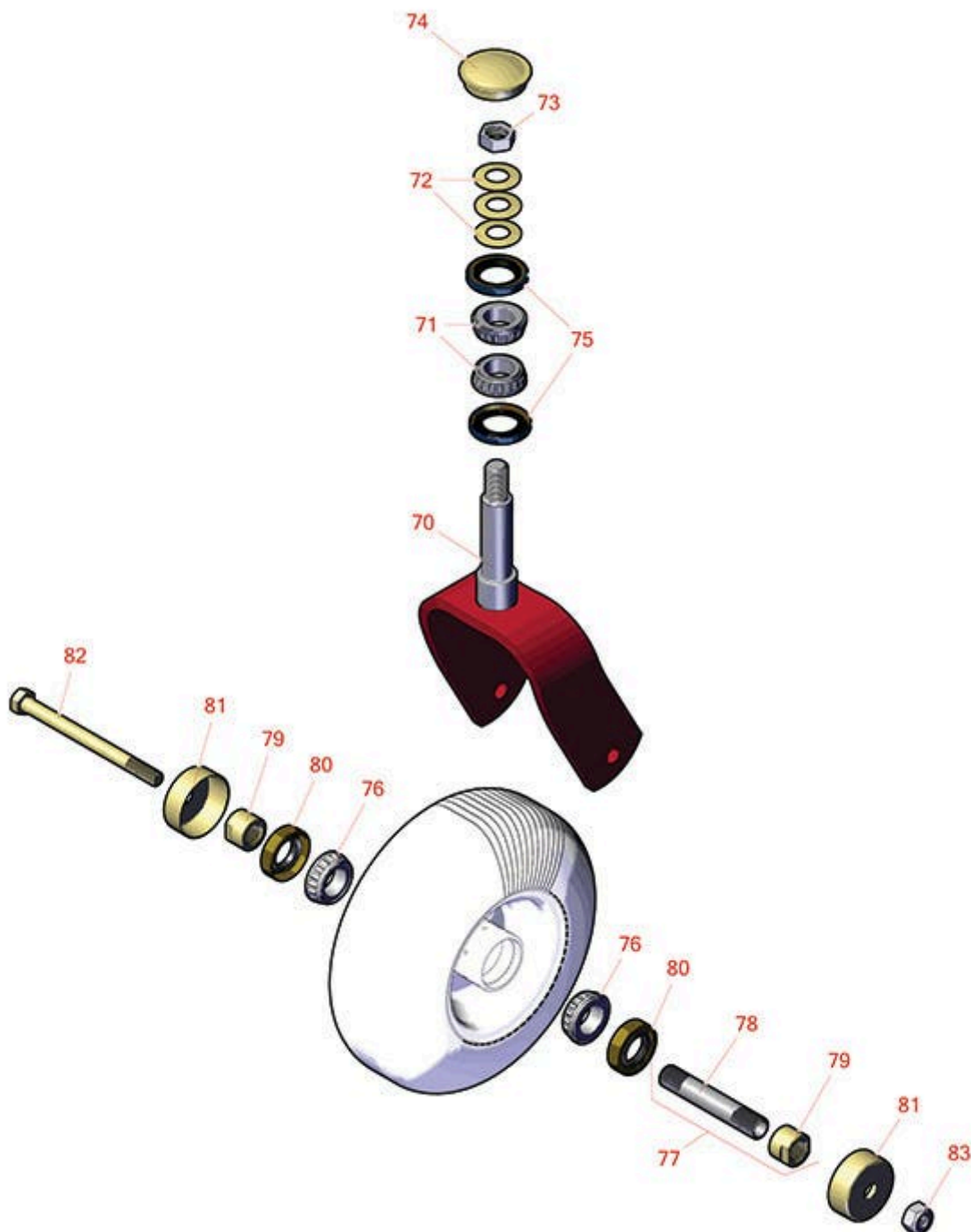




# Replaces Toro GrandStand Mower Parts

Mower with 52in Deck - Models 72505

Caster Wheel



All original equipment manufacturers names and part numbers are used for identification purposes only, and we are in no way implying that our products are original equipment parts. Prices subject to change without notice.



# Replaces Toro GrandStand Mower Parts

Mower with 52in Deck - Models 72505

Caster Wheel



Item No	R&R Part No.	OEM Part No.	Description	Qty Req	Order Quantity
---------	--------------	--------------	-------------	---------	----------------

## Other Parts Available

70	<b>R121-7988-01</b>	121-7988-01	Fork - Caster	2	
71	<b>R103-4882</b>	103-4882	Grease Cap - Castor	2	
72	<b>R3296-51</b>	3296-51, 3296-81	Nut - Nylon Lock 3/4-10 Gr 8	2	
73	<b>R1-633508</b>	1-633508	Washer - Spring Disc	6	
74	<b>R116-5647</b>	116-5647	Seal - Grease	4	
75	<b>R254-94</b>	1-543509, 254-94, 32-8090, 32-8240, 32-9640, 40440, 62-3330	Tapered Bearing Cone	4	
76	<b>R254-72</b>	01-103-0050, 01-103-0120, 01-103-0140, 1-543508, 254-71, 254-72, 40439, 62-3340, 99-4511	Cup - Bearing	4	
77	<b>R325-20</b>	01-150-1250, 01-178-0848, 325-20	Bolt - Hx HD 1/2-13 x 6	2	
78	<b>R103-2768</b>	103-2768	Guard - Seal	4	
79	<b>R126-5359</b>	126-5359	Caster Axle Assy w/Bushing	2	
80	<b>R103-3051</b>	103-3051	Spacer - Nut - Hardened	4	
81	<b>R103-3157</b>	103-3157	Axle - Caster Wheel	1	
82	<b>R103-0063</b>	103-0063	Seal - Grease	4	

All original equipment manufacturers names and part numbers are used for identification purposes only, and we are in no way implying that our products are original equipment parts. Prices subject to change without notice.



## Replaces Toro GrandStand Mower Parts

Mower with 52in Deck - Models 72505

Caster Wheel



Item No	R&R Part No.	OEM Part No.	Description	Qty Req	Order Quantity
83	<b>R254-78</b>	01-102-0060, 01-102-0130, 1-633585, 254-78, 32-7790, 32-9580, 93-4813	Tapered Bearing Cone	4	
83	<b>R500534</b>	1-633585	Bearing - with Cup	4	
<i>Detail Description: Kit includes: 1 ea R254-78- Bearing Cone &amp; R254-79 Bearing Cone:</i>					
84	<b>R3296-25</b>	30-3380, 32127-21, 32127-31, 3290-160, 3290-33, 3296-13, 3296-25, 3296-45, 329645	Locknut - 1/2-13 Heavy ESNA	2	

All original equipment manufacturers names and part numbers are used for identification purposes only, and we are in no way implying that our products are original equipment parts. Prices subject to change without notice.