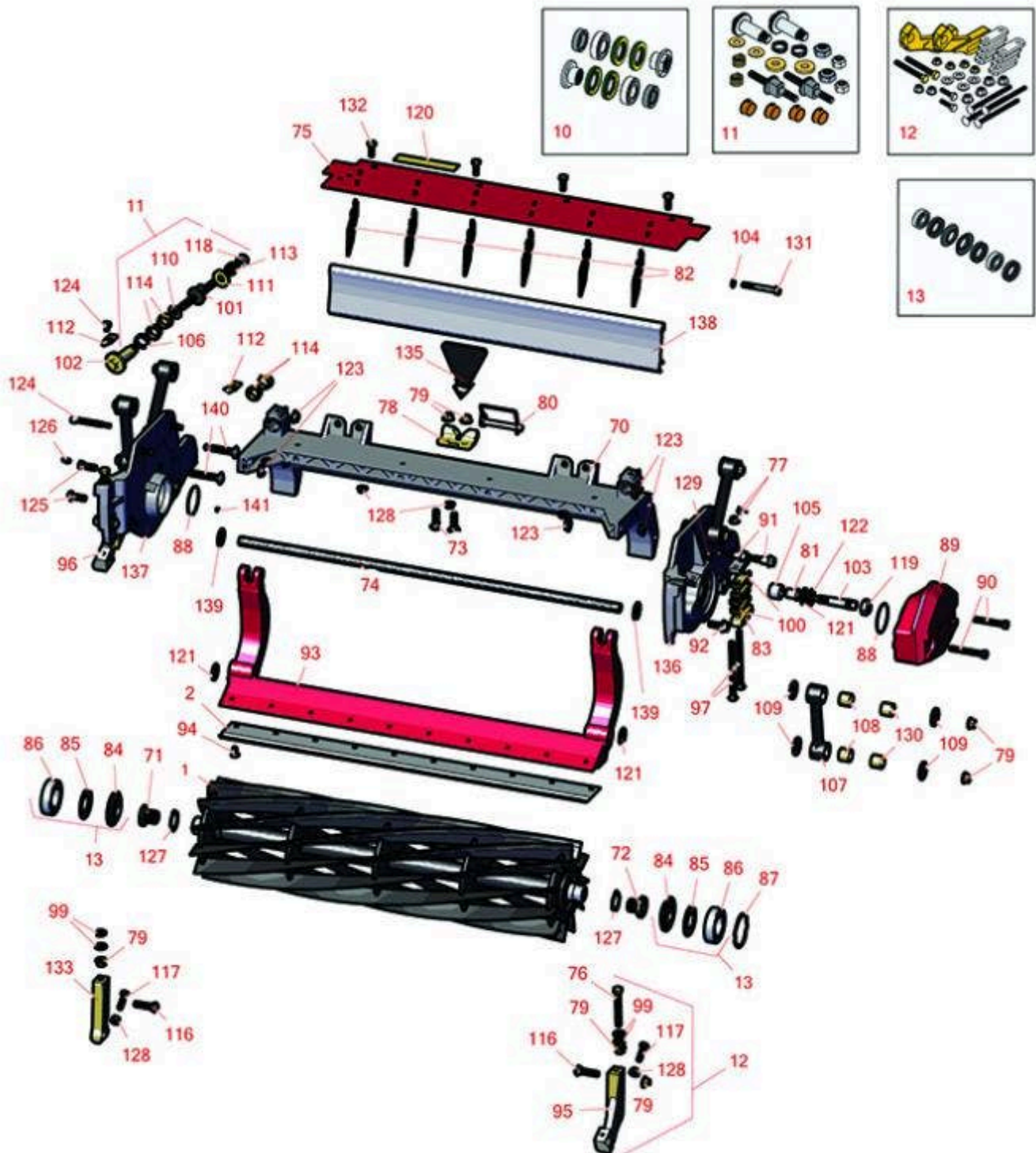




Replaces Toro Reelmaster 3105-D Parts

27in DPA Cutting Unit - Models 03188, 03189 & 03190
Reel & Bedknife



All original equipment manufacturers names and part numbers are used for identification purposes only, and we are in no way implying that our products are original equipment parts. Prices subject to change without notice.



Replaces Toro Reelmaster 3105-D Parts

27in DPA Cutting Unit - Models 03188, 03189 & 03190
Reel & Bedknife



| Item No | R&R Part No. | OEM Part No. | Description | Qty Req | Order Quantity |
|---------|--------------|--------------|-------------|---------|----------------|
|---------|--------------|--------------|-------------|---------|----------------|

R&R Reels, Lifetime Guaranteed

| | | | | | |
|---|------------------|----------|---|---|--|
| 1 | R133-0182 | 133-0182 | Reel - 5 Blade Razor Series Radial 27x7 | 1 | |
|---|------------------|----------|---|---|--|

Detail Description: R&R Razor Reels are manufactured from a special high alloy steel and then hardened to RC48-51 to match the temper of our Razor bedknives and original equipment premium series bedknives. All R&R Reels are cylindrically ground on bearing surfaces, relief ground and precision computer balanced for extended bearing and reel life. R&R Products Reels are guaranteed against defects in material and workmanship for the life of the reel under normal use. You can expect up to double the life from Razor reels over standard reels.:

| | | | | | |
|---|------------------|----------|--|---|--|
| 1 | R137-8469 | 137-8469 | Reel - 5 Blade Razor Series Radial Low Drag (RR) w/Bearings and Seals 27x7 | 1 | |
|---|------------------|----------|--|---|--|

Detail Description: R&R Razor Reels are manufactured from a special high alloy steel and then hardened to RC48-51 to match the temper of our Razor bedknives and original equipment premium series bedknives. All R&R Reels are cylindrically ground on bearing surfaces, relief ground and precision computer balanced for extended bearing and reel life. R&R Products Reels are guaranteed against defects in material and workmanship for the life of the reel under normal use. You can expect up to double the life from Razor reels over standard reels.:

| | | | | | |
|---|------------------|----------|---|---|--|
| 1 | R133-0184 | 133-0184 | Reel - 8 Blade Razor Series Radial 27x7 | 1 | |
|---|------------------|----------|---|---|--|

Detail Description: R&R Razor Reels are manufactured from a special high alloy steel and then hardened to RC48-51 to match the temper of our Razor bedknives and original equipment premium series bedknives. All R&R Reels are cylindrically ground on bearing surfaces, relief ground and precision computer balanced for extended bearing and reel life. R&R Products Reels are guaranteed against defects in material and workmanship for the life of the reel under normal use. You can expect up to double the life from Razor reels over standard reels.:

| | | | | | |
|---|------------------|----------|---|---|--|
| 1 | R137-8470 | 137-8470 | Reel - 8 Blade Razor Series Radial (RR) w/Bearings and Seals 27x7 | 1 | |
|---|------------------|----------|---|---|--|

Detail Description: R&R Reel blades are expertly crafted from premium high carbon-boron alloy steel, heat-treated to perfectly complement both R&R and OEM bedknives. Each reel undergoes precision cylindrical grinding on bearing surfaces, followed by relief grinding for optimal performance. Advanced computer balancing ensures extended reel and bearing life. Backed by our lifetime guarantee against defects in materials and craftsmanship under normal use, R&R Reels deliver unmatched durability and cutting precision you can trust.:

| | | | | | |
|---|------------------|----------|--|---|--|
| 1 | R133-8278 | 133-8278 | Reel - 11 Blade Razor Series Radial 27x7 | 1 | |
|---|------------------|----------|--|---|--|

All original equipment manufacturers names and part numbers are used for identification purposes only, and we are in no way implying that our products are original equipment parts. Prices subject to change without notice.



Replaces Toro Reelmaster 3105-D Parts

27in DPA Cutting Unit - Models 03188, 03189 & 03190
Reel & Bedknife



| Item No | R&R Part No. | OEM Part No. | Description | Qty Req | Order Quantity |
|---------|--------------|--------------|-------------|---------|----------------|
|---------|--------------|--------------|-------------|---------|----------------|

Detail Description: R&R Razor Reels are manufactured from a special high alloy steel and then hardened to RC48-51 to match the temper of our Razor bedknives and original equipment premium series bedknives. All R&R Reels are cylindrically ground on bearing surfaces, relief ground and precision computer balanced for extended bearing and reel life. R&R Products Reels are guaranteed against defects in material and workmanship for the life of the reel under normal use. You can expect up to double the life from Razor reels over standard reels.:

| | | | | | |
|---|------------------|----------|--|---|--|
| 1 | R137-8471 | 137-8471 | Reel - 11 Blade Razor Series Radial (RR) w/Bearings and Seals 27x7 | 1 | |
|---|------------------|----------|--|---|--|

Detail Description: R&R Reel blades are expertly crafted from premium high carbon-boron alloy steel, heat-treated to perfectly complement both R&R and OEM bedknives. Each reel undergoes precision cylindrical grinding on bearing surfaces, followed by relief grinding for optimal performance. Advanced computer balancing ensures extended reel and bearing life. Backed by our lifetime guarantee against defects in materials and craftsmanship under normal use, R&R Reels deliver unmatched durability and cutting precision you can trust.:

R&R Bedknives, Lifetime Guaranteed

| | | | | | |
|---|------------------|----------|----------------------------------|---|--|
| 2 | R114-9388 | 114-9388 | Bedknife - 27 in Unit - Standard | 1 | |
|---|------------------|----------|----------------------------------|---|--|

Detail Description: R&R Bedknives are manufactured from high carbon-boron alloy steel and then hardened to RC46-49 to match the temper of our reel blades and original equipment reels. Bedknives are surface ground on the top and front edge and straightened three times before being packaged with oil for rust prevention. All R&R Bedknives now have an increased front edge grind for added life. All R&R Bedknives are guaranteed against defects in material and workmanship under normal use for the life of the part.:

| | | | | | |
|---|------------------|----------|------------------------------------|---|--|
| 2 | R114-9390 | 114-9390 | Bedknife - 27 in Unit - Heavy Duty | 1 | |
|---|------------------|----------|------------------------------------|---|--|

Detail Description: R&R Bedknives are manufactured from high carbon-boron alloy steel and then hardened to RC46-49 to match the temper of our reel blades and original equipment reels. Bedknives are surface ground on the top and front edge and straightened three times before being packaged with oil for rust prevention. All R&R Bedknives now have an increased front edge grind for added life. All R&R Bedknives are guaranteed against defects in material and workmanship under normal use for the life of the part.:

R&R Razor Tool Steel Bedknives, Lifetime Guaranteed

| | | | | | |
|---|------------------|----------|--|---|--|
| 2 | R112-8910 | 112-8910 | Bedknife - Razor Tool Steel - 27 High Cut | 1 | |
|---|------------------|----------|--|---|--|

All original equipment manufacturers names and part numbers are used for identification purposes only, and we are in no way implying that our products are original equipment parts. Prices subject to change without notice.



Replaces Toro Reelmaster 3105-D Parts

27in DPA Cutting Unit - Models 03188, 03189 & 03190
Reel & Bedknife



| Item No | R&R Part No. | OEM Part No. | Description | Qty Req | Order Quantity |
|---------|--------------|--------------|-------------|---------|----------------|
|---------|--------------|--------------|-------------|---------|----------------|

Detail Description: R&R Razor bedknives are manufactured from premium alloy tool steel steel and then hardened to RC48-51 to match the temper of our Razor reel blades and original equipment premium series reels. Bedknives are surface ground on the top and front edge and specially packaged for rust prevention. All R&R Bedknives now have an increased front edge grind for added life. All R&R Bedknives are guaranteed against defects in material and workmanship under normal use for the life of the part. You can expect up to double the life over standard bedknives.:

Overhaul Kits

| | | | | | |
|--|------------------|----------|-------------------------------|---|--|
| 10 | R114-5430 | 114-5430 | Overhaul Kit - Roller | 1 | |
| <i>Detail Description:</i> Includes 4 ea.: R112-7494 Seals; 2 ea.: R302-5 Grease Zerks, R114-3717 Seals, R112-5290 Bearings & R114-3745 Locknuts: | | | | | |
| 11 | R120-7230 | 120-7230 | Overhaul Kit - Fits DPA Units | 1 | |
| <i>Detail Description:</i> Incl 2 ea.: R108-0015, R115-7039, R119-4155, R120-5116, R120-5118, R120-5120, R3296-33, R3296-48 & 4 ea: R106-5344: | | | | | |
| 12 | R110-9600 | 110-9600 | High HOC Kit | 1 | |
| <i>Detail Description:</i> Includes 1 ea.: R120-0404, R120-0405 & 2 ea: R112-7451, R322-16, R445722 & 4 ea.: R106-9758, R104-8300, R453011, R104-8301 & 8 ea: R106-3925: | | | | | |
| 13 | R131-3233 | 131-3233 | Groomer/Rrb Seal Kit | 1 | |

Other Parts Available

| | | | | | |
|----|------------------|--|----------------------------------|---|--|
| 70 | R112-8935 | 112-8935 | Frame - Center - 27 in Unit | 1 | |
| 71 | R127-7109 | 127-7109 | Insert-Threaded - 7 in Reel (RH) | 1 | |
| 72 | R127-7111 | 127-7111 | Insert-Threaded - 7 in Reel (LH) | 1 | |
| 73 | R3231-25 | 01-173-0610, 30-9970, 3231-25, 3231-3, 900064P | Bolt - Carriage 3/8-16 x 1-1/4 | 2 | |
| 74 | R112-8936 | 112-8936 | Tube- Support - 27 in Units | 1 | |

All original equipment manufacturers names and part numbers are used for identification purposes only, and we are in no way implying that our products are original equipment parts. Prices subject to change without notice.



Replaces Toro Reelmaster 3105-D Parts

27in DPA Cutting Unit - Models 03188, 03189 & 03190
Reel & Bedknife



| Item No | R&R Part No. | OEM Part No. | Description | Qty Req | Order Quantity |
|------------------------------------|------------------|---|---------------------------------------|---------|----------------|
| 75 | R112-8942 | 112-8942 | Front Grass Shield Assy - 27 in Units | 1 | |
| 76 | R112-7451 | 100-9429, 112-7451 | Bolt - Hex Tap 3/8-16 x 2-3/4 | 2 | |
| 76 | R107-4026 | 107-4026 | Bolt - Hex Tap 3/8-16 x 3-3/4 | 2 | |
| 77 | R104-8300 | 104-8300, 104-8300 , 119-4041 | Locknut - 5/16-18 Flanged Y/Zinc | 6 | |
| 78 | R110-4058 | 110-4058 | Bracket - Chain | 1 | |
| 79 | R104-8301 | 104-8301, 104-9301, 109-6658, 133-7570 | Locknut - 3/8-16 Nylon Flanged | 2 | |
| 80 | R107-7400 | 107-7400 | Pin - Lynch | 1 | |
| 81 | R56-9520 | 56-9520 | Bushing - Nyliner | 2 | |
| 82 | R110-1706 | 110-1706 | Deflector | 6 | |
| 83 | R106-3924 | 106-3924 | Bracket - Rear Roller | 2 | |
| 84 | R127-4284 | 127-4284 | Washer - Special | 2 | |
| 85 | R115-3299 | 115-3299 | Seal- Flocked | 2 | |
| 86 | R115-3296 | 115-3296 | Bearing | 2 | |
| 87 | R105-5700 | 105-5700, 115-5258 | Wave Washer - Bearing | 1 | |
| 88 | R112-6967 | 112-6967 | O-Ring | 2 | |
| <i>Tech Note: Up to 401420001:</i> | | | | | |
| 88 | R117-8177 | 117-8177 | O-Ring | 2 | |
| <i>Tech Note: After 401420001:</i> | | | | | |

All original equipment manufacturers names and part numbers are used for identification purposes only, and we are in no way implying that our products are original equipment parts. Prices subject to change without notice.



Replaces Toro Reelmaster 3105-D Parts

27in DPA Cutting Unit - Models 03188, 03189 & 03190
Reel & Bedknife



| Item No | R&R Part No. | OEM Part No. | Description | Qty Req | Order Quantity |
|--|---------------------|---|--------------------------------------|---------|----------------|
| 89 | R119-0614-01 | 119-0614-01 | Weight | 1 | |
| 90 | R101526 | 01-150-0970, 01-178-0620, 20-53-AGD, 321-11, 3224-8, 323-11, 323-12, 323-31, 323-4, 323-47 | Bolt - Hex HD 3/8-16 x 2-1/2 GR5 | 2 | |
| 91 | R107-2979 | 107-2979 | Bolt - Shoulder | 6 | |
| 92 | R3234-11 | 3234-11 | Bolt - Hex Washer HD | 2 | |
| 93 | R112-8908-01 | 112-8908-01 | Bedbar - 27 in - Fits OEM Units Only | 1 | |
| 94 | R119-4151 | 119-4151 | Screw - Bedknife 5/16-18 x 17/32 | 10 | |
| 95 | R120-0404 | 120-0404 | Bracket- High HOC - LH | 1 | |
| <i>Detail Description: Fits 2011 & Newer:</i> | | | | | |
| 96 | R120-0405 | 120-0405 | Bracket - High HOC - RH | 1 | |
| <i>Detail Description: Fits 2011 & Newer:</i> | | | | | |
| 97 | R3230-30 | 3230-30 | Bolt - Carriage 5/16x4 1/2 | 4 | |
| <i>Tech Note: Models 03188 / 03189 / 03190 Only:</i> | | | | | |
| 97 | R106-9758 | | Bolt - Carriage 5/16x4 | 4 | |
| <i>Tech Note: Models 03188 / 03189 / 03190 Only:</i> | | | | | |
| 97 | R3230-26 | 3230-26 | Screw - Carriage 5/16-18 x 3 | 4 | |
| <i>Tech Note: Models 03188 / 03189 Only:</i> | | | | | |
| 97 | R3230-7 | 25-33-AGD, 3230-9 | Bolt - Carriage 5/16-18 x 2 1/2 | 4 | |

All original equipment manufacturers names and part numbers are used for identification purposes only, and we are in no way implying that our products are original equipment parts. Prices subject to change without notice.



Replaces Toro Reelmaster 3105-D Parts

27in DPA Cutting Unit - Models 03188, 03189 & 03190
Reel & Bedknife



| Item No | R&R Part No. | OEM Part No. | Description | Qty Req | Order Quantity |
|--|------------------|--|--------------------------------------|---------|----------------|
| <i>Tech Note: Model 03190 Only:</i> | | | | | |
| 99 | R453011 | 01-166-0100, 01-166-0120, 01-166-0270, 01-166-0500, 01-166-0600, 01-166-0620, 132-4593, 2356-3, 237-12, 24-10-AD, 24-11-AD, 24-11-BD, 24-12-AD, 24-12-BD, 30-9310, 32-8190, 3256-24, 3256-3, 3256-36, 3256-4, 453011, 47-9950, 48-9220, 513458, 7-0052 | Washer - Flat 3/8 SAE Y/Zinc | 4 | |
| 100 | R119-0626 | 119-0626 | Shim - Roller - 1/4 in - Slotted | 8 | |
| <i>Tech Note: 2011 & Newer:</i> | | | | | |
| 101 | R115-7039 | 115-7039 | Screw - Adjuster - Bedbar | 2 | |
| <i>Tech Note: Models 03188 / 03189 / 03190 Only:</i> | | | | | |
| 101 | R137-6130 | 137-6130 | Screw - Adjuster - Hardened - Bedbar | 2 | |
| <i>Tech Note: Model 03188 Only:</i> | | | | | |
| 102 | R120-5118 | 120-5118 | Shaft - Adjuster | 2 | |
| <i>Detail Description: 2012 & Newer:</i> | | | | | |
| 103 | R106-9623 | 106-9623 | Bolt - Bedbar | 2 | |

All original equipment manufacturers names and part numbers are used for identification purposes only, and we are in no way implying that our products are original equipment parts. Prices subject to change without notice.



Replaces Toro Reelmaster 3105-D Parts

27in DPA Cutting Unit - Models 03188, 03189 & 03190
Reel & Bedknife



| Item No | R&R Part No. | OEM Part No. | Description | Qty Req | Order Quantity |
|---------|------------------|--|--------------------------------|---------|----------------|
| 104 | R3256-74 | 3256-74 | Washer - Flat | 1 | |
| 105 | R106-9618 | 106-9618 | Bushing - Rubber | 2 | |
| 106 | R120-5116 | 120-5116 | Washer - Wave | 2 | |
| 107 | R16-9759 | 16-9759 | Link Assy | 4 | |
| 108 | R93-6981 | 93-6981 | Spacer | 8 | |
| 109 | R93-8806 | 93-8806 | Washer-Hardened | 16 | |
| 110 | R108-0015 | 108-0015 | Washer - Flat | 2 | |
| 111 | R119-4155 | 119-4155 | Washer - Hardened | 2 | |
| 112 | R99-2097 | 99-2097 | Detent - Bed Bar Adjuster | 2 | |
| 113 | R120-5120 | 120-5120 | Spring - Compression | 2 | |
| 114 | R106-5344 | 106-5344 | Bushing - Flanged and Keyed | 4 | |
| 116 | R3231-4 | 01-157-0440, 01-173-0612, 3231-4 | Bolt - Carriage 3/8-16 x 1-1/2 | 2 | |
| 117 | R322-16 | 322-16, Apr-00 | Bolt - Hex HD 5/16-18 x 1-1/8 | 2 | |
| 118 | R3296-48 | 119-4039, 32146-7, 3296-34, 3296-48 | Locknut - 7/16-14 ESNA | 2 | |
| 119 | R3296-33 | 3296-33 | Locknut - 5/8-18 ESNA Jam | 12 | |
| 120 | R93-6688 | 93-6688 | Decal - Warning | 1 | |
| 120 | R137-9706 | 137-9706 | Decal- Warning | 1 | |
| 121 | R61-1950 | 61-1950 | Washer - Nylon - Bed Bar | 4 | |

All original equipment manufacturers names and part numbers are used for identification purposes only, and we are in no way implying that our products are original equipment parts. Prices subject to change without notice.



Replaces Toro Reelmaster 3105-D Parts

27in DPA Cutting Unit - Models 03188, 03189 & 03190
Reel & Bedknife



| Item No | R&R Part No. | OEM Part No. | Description | Qty Req | Order Quantity |
|---------|------------------|---|-----------------------------------|---------|----------------|
| 122 | R453017 | 01-166-0050, 01-166-0240, 01-166-0800, 24-13-AD, 24-14-AD, 32-8110, 3256-26, 3256-6, 453017, 69-8980, 87-7270 | Washer - Flat 1/2 | 2 | |
| 123 | R32128-43 | 30-8990, 32128-43, 3290-357 | Nut - Flanged Whiz - 3/8-16 | 6 | |
| 123 | R3296-39 | 32127-25, 32128-36, 3290-357, 3296-17, 3296-22, 3296-39, 915663P, 99-7443 | Locknut - 3/8-16 Nylon | 6 | |
| 124 | R107-7773 | 107-7773 | Bolt - Soc HD Cap 5/16-18 x 2-1/2 | 1 | |
| 125 | R323-6 | 01-150-0010, 01-178-0608, 20-47-AD, 20-47-AGD, 3224-2, 323-6, 49-3510, 908034P, 908332 | Bolt - Hex HD 3/8-16 x 1 GR5 YZ | 2 | |

All original equipment manufacturers names and part numbers are used for identification purposes only, and we are in no way implying that our products are original equipment parts. Prices subject to change without notice.



Replaces Toro Reelmaster 3105-D Parts

27in DPA Cutting Unit - Models 03188, 03189 & 03190
Reel & Bedknife



| Item No | R&R Part No. | OEM Part No. | Description | Qty Req | Order Quantity |
|---|---------------------|--|------------------------------------|---------|----------------|
| 126 | R302-5 | 21-6010, 302-11, 302-37, 302-47, 302-5, 302-57, 302-58, 302-6, 31-0300, 32-9660, 60-0800, 62-3880, 92-4181 | Fitting - Grease | 2 | |
| 127 | R92-2601 | 92-2601 | Snap Ring | 2 | |
| 128 | R445722 | 30-8980, 32128-2, 32128-20, 32128-20 | Nut - Serrated Washer | 2 | |
| 129 | R170714 | 302-34, 302-39, 62-3520 | Fitting - Pressure Relief | 2 | |
| 130 | R94-8945 | 94-8945 | Bushing - Bronze - Link Bar | 8 | |
| 131 | R322-14 | 01-150-0830, 01-178-0524, 30-8900, 322-14 | Bolt - Hex HD 5/16-18 x 3 GR5 | 1 | |
| 132 | R3234-7 | 3234-7 | Bolt - Hex Washer HD 5/16-18 x 5/8 | 4 | |
| 133 | R125-2796 | 125-2796 | Bracket- Front HOC | 2 | |
| <i>Detail Description: Fits 2013 & Newer:</i> | | | | | |
| 135 | R110-4088-03 | 110-4088-03, 119-8010-03 | Kickstand | 1 | |
| 136 | R137-5976 | 137-5976 | Side Plate Assy - 7 in LH Aluminum | 1 | |

All original equipment manufacturers names and part numbers are used for identification purposes only, and we are in no way implying that our products are original equipment parts. Prices subject to change without notice.



Replaces Toro Reelmaster 3105-D Parts

27in DPA Cutting Unit - Models 03188, 03189 & 03190
Reel & Bedknife



| Item No | R&R Part No. | OEM Part No. | Description | Qty Req | Order Quantity |
|---------|------------------|--------------|------------------------------------|---------|----------------|
| 137 | R137-5979 | 137-5979 | Side Plate Assy - 7 in RH Aluminum | 1 | |
| 138 | R125-1997 | 125-1997 | Grass Shield - Rear 27 in Unit | 1 | |
| 139 | R130-8094 | 130-8094 | Washer | 2 | |
| 140 | R3231-40 | 3231-40 | Bolt - Carriage 3/8-16 x 2 1/4 | 8 | |
| 141 | R3245-35 | 3245-35 | Screw - Set 1/4-28 x 1/4 | 2 | |

All original equipment manufacturers names and part numbers are used for identification purposes only, and we are in no way implying that our products are original equipment parts. Prices subject to change without notice.