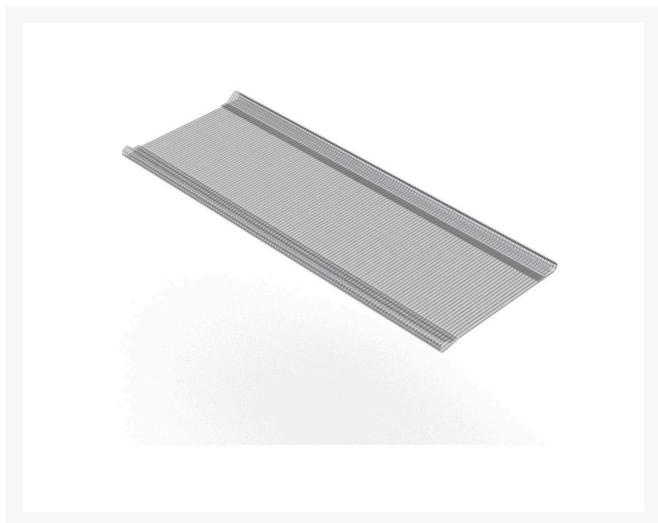




# Keystone Steel Drag Mat - 6' x 3' to Fit Drag Frame

R08757



## Details

Perfectly level and smooth the surface on dirt, gravel, clay or sand. Ideal for top dressing and breaking up aerification plugs on golf course greens and fairways, dragging baseball fields and track surfaces, sand trap raking, and debris removal before laying sod or grass seed. Rust resistant. Reversible. Rolls up like carpet for easy cleaning. Mesh size 1" x 1", Crimp 3/8" deep x .046" thick, 13 gauge (.0915") galvanized steel rods. Wt. 1.6 lbs/sq ft.

- Levels dirt, gravel, clay or sand
- Ideal for to dressing
- Breaks up aerification plugs
- Rakes sand traps
- Removes debris
- Rust resistant
- Reversible
- 1" x 1" mesh
- 13 gauge galvanized steel rods
- Frame not included

## Replaces

Toro	08757
------	-------

## Specifications

Manufacturer	Keystone
Manufacturer's	M1072X3
Model No	
Dimensions	6 x 3 ft
Weight (lbs)	69 lb

## Amacron Golf & Turf

19 Tate Drive Kerang, 3579

+61 2 8011 1001 Toll Free: 1300 AMACRON

<https://amacron.rrproducts.com/>



# Keystone Steel Drag Mat - 6' x 3' to Fit Drag Frame

R08757



## Fits Models

R&R Products Sand Max 516  
R&R Products Sand Max 518  
R&R Products Sand Max 521LP  
Toro Groundsmaster 7200  
Toro Groundsmaster 7210  
Toro Sand Pro 3040  
Toro Sand Pro 5040

## Amacron Golf & Turf

19 Tate Drive Kerang, 3579

+61 2 8011 1001 Toll Free: 1300 AMACRON

<https://amacron.rrproducts.com/>