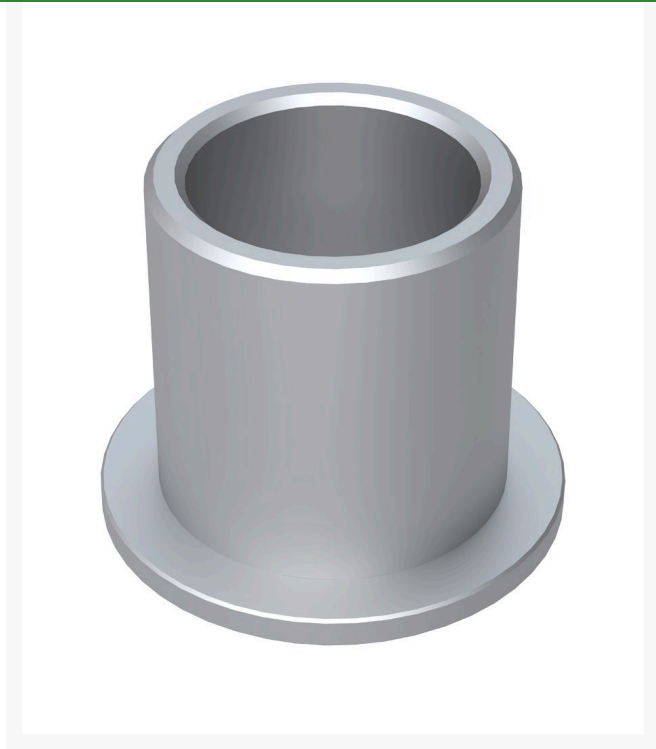
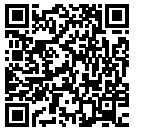




Bearing - Flanged

R1-303514



Replaces

Exmark	1-303514
Toro	1-303514

Specifications

Manufacturer	R&R Products
--------------	--------------

Fits Models

- Toro Commercial Walk Behind
- Toro Mid-Size Walk Behind Mowers
- Toro Z Master 2000
- Toro Z Master Commercial 3000
- Toro Z Master Professional 5000
- Toro Z Master Professional 6000
- Exmark Metro
- Exmark Turf Tracer S-Series
- Exmark Viking
- Toro Proline Commercial Walk-Behind Mower

Amacron Golf & Turf

19 Tate Drive Kerang, 3579

+61 2 8011 1001 Toll Free: 1300 AMACRON

<https://amacron.rrproducts.com/>