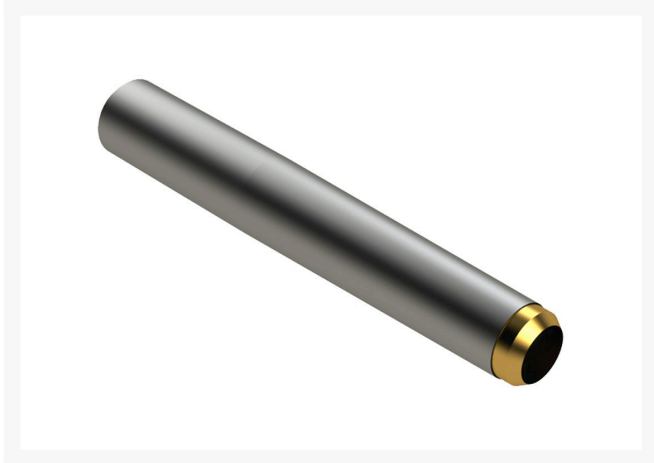




# Alloy Hollow Tine with Carbide Tip - .750MT x 4.750L x .640OD R201405



## Details

Carbide-Tipped Alloy Hollow Tine construction uses the same special high carbon alloy steel tubing and hardened to RC45-48 as the alloy hollow tines, with the addition of a carbide tip for even longer life. The advantage of using carbide-tipped tines is the ability to maintain your maximum aerating depth consistently over the life of the tines. You can expect these tines to last 6-8 times longer than the R&R Standard Hollow Tines. Carbide-tipped tines are not recommended in rocky soil conditions, as carbide, which is extremely wear resistant, can break when encountering hard impacts in rocks.

## Specifications

Manufacturer	R&R Products
A - Tine Type	Alloy Hollow with Carbide Tip
B - Tine Mounting Dia.	.750 in (19mm)
C - Tine Length	4.75 in (121mm)
Carbide Tip	Carbide Tip
D - Tine Tip Outside (Hole) Dia.	.640 in (16.3mm)
E - Tine Tip Inside (Core) Dia.	.500 in (12.7mm)
F - Tine Wall Thickness	.049 in (1.2mm)
Savings	Volume Buy

## Fits Models

Toro Greens Aerator  
Toro ProCore 1298  
Toro ProCore 440  
Toro ProCore 648  
Toro ProCore 660  
Toro ProCore 864  
Toro ProCore 880

## Amacron Golf & Turf

19 Tate Drive Kerang, 3579

+61 2 8011 1001 Toll Free: 1300 AMACRON

<https://amacron.rrproducts.com/>



**Alloy Hollow Tine with Carbide Tip -**  
**.750MT x 4.750L x .640OD**  
R201405



---

Toro ProCore 648s

**Amacron Golf & Turf**

19 Tate Drive Kerang, 3579

+61 2 8011 1001 Toll Free: 1300 AMACRON

<https://amacron.rrproducts.com/>