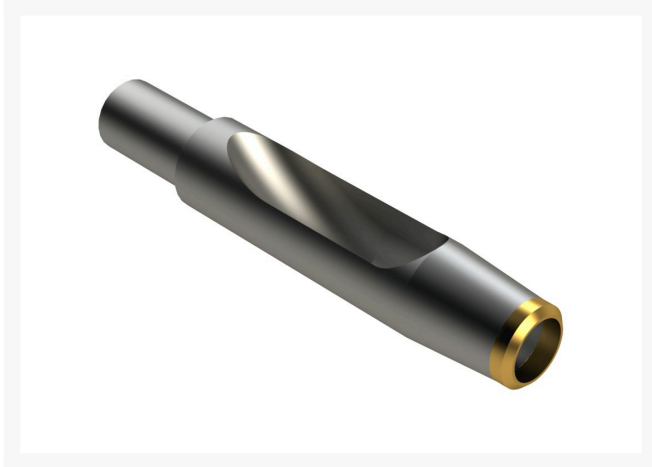




# Alloy Machined Side-Eject Tine with Carbide Tip - .500MT x 3.500L x .545OD

R201677



## Details

Manufactured from special high carbon alloy tubular steel with a precision machined slot in the side wall to allow for more efficient core removal in heavy soils. R&R's unique method of machining maintains the maximum side wall height for strength to avoid bending. These tines are through hardened to RC45-48 to create a much tougher and more wear resistant tine. A carbide tip is then added for even longer life. The advantage of using carbide tipped tines is the ability to maintain your maximum aerating depth consistently over the life of the tines.

## Specifications

Manufacturer	R&R Products
A - Tine Type	Alloy Machined Side-Eject with Carbide Tip
B - Tine Mounting Dia.	.500 in (12.7mm)
C - Tine Length	3.5 in (89mm)
Carbide Tip	Carbide Tip
D - Tine Tip Outside (Hole) Dia.	.545 in (13.8mm)
E - Tine Tip Inside (Core) Dia.	.400 in (10.2mm)
F - Tine Wall Thickness	.062 in (1.6mm)
Savings	Volume Buy

## Fits Models

Jacobsen GA-24  
Ryan GA30  
Ryan Greensaire II

## Amacron Golf & Turf

19 Tate Drive Kerang, 3579

+61 2 8011 1001 Toll Free: 1300 AMACRON

<https://amacron.rrproducts.com/>