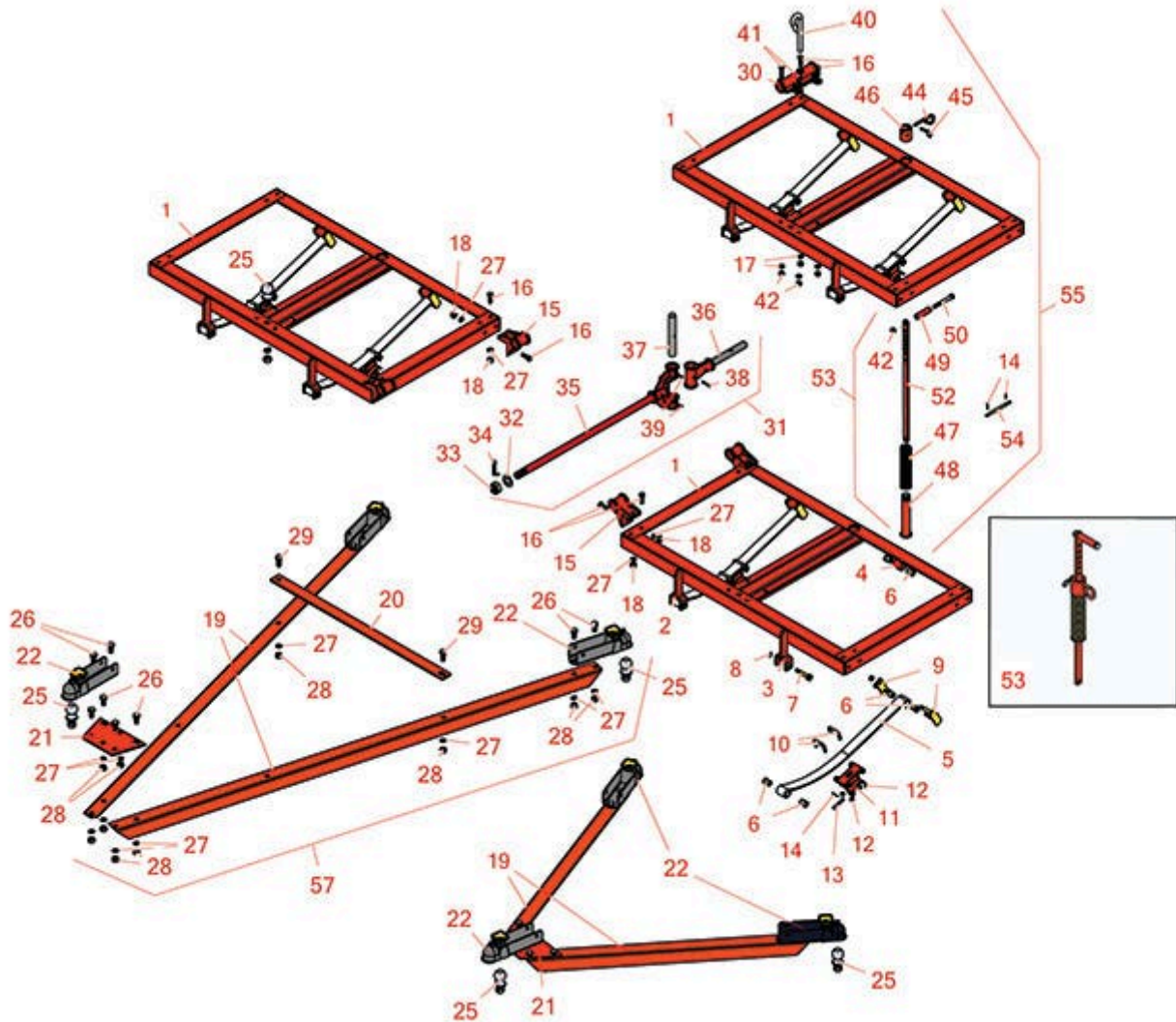




# Replaces Jacobsen Blitzer Parts

Pull Frames

Pull Frame Parts



All original equipment manufacturers names and part numbers are used for identification purposes only, and we are in no way implying that our products are original equipment parts. Prices subject to change without notice.



# Replaces Jacobsen Blitzer Parts

Pull Frames

Pull Frame Parts



Item No	R&R Part No.	OEM Part No.	Description	Qty Req	Order Quantity
1	<b>R110040</b>	110040	Frame - Replaces Blitzer	1	
<i>Tech Note: Includes: 2 ea: R318009 Hanger; 1ea: R110041 Bracket &amp; R110042 Bracket:</i>					
2	<b>R110041</b>	110041	Bracket - Front Spring RH	1	
3	<b>R110042</b>	110042	Bracket - Front Spring LH	1	
4	<b>R318009</b>	318009	Hanger - Spring	2	
5	<b>R110024</b>	110024	Spring - Fits Blitzer Frame	2	
<i>Tech Note: Must order in sets of 2:</i>					
6	<b>R318006</b>	318006	Bushing - Rubber	12	
7	<b>R318005</b>	318005	Bolt	2	
8	<b>R444730</b>	444730	Nut - 7/16-20 Hex	2	
9	<b>R113259</b>	113259	Shackle - Spring	2	
10	<b>R318010</b>	318010	U-Bolt	4	
11	<b>R204863</b>	204863	Perch - Spring Frame	2	
12	<b>R444744</b>	444744	Locknut - 3/8-24	8	
13	<b>R325390</b>	325390	Pin - Rod End	2	
14	<b>R460028</b>	460028	Pin - Cotter 1/8 x 1	4	
15	<b>R204860</b>	204860	Hinge - Side	4	
16	<b>R400442</b>	400442	Screw - 1/2 20 x 1-1/2 Hex	8	
17	<b>R446154</b>	446152, 446154	Washer - Lock 1/2	12	
18	<b>R444816</b>	444816, 445667	Nut - 1/2-20 ESNA	8	
19	<b>R318013</b>	318013	Angle - 96 Tongue	2	

All original equipment manufacturers names and part numbers are used for identification purposes only, and we are in no way implying that our products are original equipment parts. Prices subject to change without notice.



# Replaces Jacobsen Blitzer Parts

Pull Frames

Pull Frame Parts



Item No	R&R Part No.	OEM Part No.	Description	Qty Req	Order Quantity
19	<b>R318017</b>	318017	Angle - 48 Pull Tongue	2	
20	<b>R318015</b>	318015	Bar - Cross 96 Tongue	1	
21	<b>R318014</b>	318014	Plate - 96 Pull Tongue	1	
21	<b>R318018</b>	318018	Plate - 48 Pull Tongue	1	
22	<b>R131224</b>	131224	Hitch - Fits 2 Ball	2	
25	<b>R110466</b>	110466	Hitch - Ball Assy	1	
25	<b>R318027</b>	318027	Ball - Hitch 2 w/Lockwasher and Nut	2	
<i>Tech Note: Includes lockwasher and nut.:</i>					
26	<b>R400610</b>	400610	Bolt - Hex HD 5/8-11 x 1-1/4	10	
27	<b>R447224</b>	447224	Washer - Lock 5/8 Int Star Z	12	
28	<b>R443126</b>	443126	Locknut - 5/8-11 Center Zinc	12	
29	<b>R400612</b>	400612	Bolt - Hex HD 5/8-11 x 1-1/2	2	
30	<b>R204867</b>	204867	Hinge - Rear Frame	1	
31	<b>R110032</b>	110032	Rod - w/Swivel Hinge Assy	1	
<i>Tech Note: Includes: 1 ea: R110028 Rod, R110029 Rod, R150652 Washer, R318019 Pin, R445720 Nut, R460068 Pin &amp; R461345 Pin:</i>					
32	<b>R150652</b>	150652, 325262	Washer - 2 Roller	1	
33	<b>R445720</b>	445720	Nut - 1-1/8 -7 Zinc Slotted	1	
34	<b>R460068</b>	460068	Pin - Cotter 1/4 x 2	1	
35	<b>R110028</b>	110028	Rod - w/Front Swivel Hinge	1	
36	<b>R110029</b>	110029	Rod - w/Rear Swivel Hinge	1	
37	<b>R318019</b>	318019	Pin - Hinge	1	

All original equipment manufacturers names and part numbers are used for identification purposes only, and we are in no way implying that our products are original equipment parts. Prices subject to change without notice.



# Replaces Jacobsen Blitzer Parts

Pull Frames

Pull Frame Parts



Item No	R&R Part No.	OEM Part No.	Description	Qty Req	Order Quantity
38	<b>R461345</b>	461345	Pin - 1/4 x 2 Center Grooved	1	
39	<b>R302-5</b>	302-5, 471214, 471223, 471226	Fitting - Grease	2	
40	<b>R318012</b>	318012	Pin - Rear Frame Hinge	1	
41	<b>R400444</b>	400444	Bolt - Hex HD 1/2-20 x 1-3/4	2	
42	<b>R32146-11</b>	443120	Locknut - 1/2-20 Center	4	
44	<b>R318001</b>	318001	Pin - Lock	1	
45	<b>R460312</b>	460312	Pin - Hair Cotter	1	
46	<b>R358414</b>	358414	Nut - Adjusting Lever	1	
47	<b>R316133</b>	316133	Spring - Lever Fits Blitzer	1	
48	<b>R110031</b>	110031	Tube - Outer Lever Assy	1	
49	<b>R319873</b>	319873	Handle - Spring Lever	1	
50	<b>R400456</b>	400456	Bolt - Handle	1	
52	<b>R335677</b>	325296, 335677	Lever - Fits Blitzer	1	
53	<b>R110030</b>	110030	Lever Assy	1	
<i>Tech Note: Includes: 1ea: R110031 Tube, R316133 Spring, R318001 Pin, R319873 Handle, R32146-11 Locknut, R335677 Lever, R358414 Nut, R400456 Bolt, &amp; R460312 Pin:</i>					
54	<b>R316478</b>	316478	Rod - Fits Blitzer Skid	1	
55	<b>R73411</b>	73411	Frame - Assy	1	
<i>Tech Note: Includes: R110030 Lever &amp; R110040 Frame:</i>					
56	<b>R73403</b>	73403	Tongue - 48 Pull Assy	1	
<i>Tech Note: Use with 3 OR 5 Gang Only. Includes: 10 ea.: R400610 Bolts, R443126 Locknuts, R447224 Washers; 3 ea: R131224 Hitch, R318027 Ball; 2 ea: R318017; &amp; 1 ea: R318018 Plate:</i>					

All original equipment manufacturers names and part numbers are used for identification purposes only, and we are in no way implying that our products are original equipment parts. Prices subject to change without notice.



# Replaces Jacobsen Blitzer Parts

Pull Frames

Pull Frame Parts



Item No	R&R Part No.	OEM Part No.	Description	Qty Req	Order Quantity
57	<b>R73404</b>	73404	Tongue - 96 Pull Assy	1	

*Tech Note: Use With 7, 9 or 11 Gang Units. Includes: 12 ea: R443126 Locknuts, R447224 Washers; 10 ea: R400610 Bolts; 3 ea: R131224 Hitch, R318027 Ball; 2 ea: R400612 Bolt, R318013 Angle; & 1 ea: R318014 Plate & R318015 Bar:*

All original equipment manufacturers names and part numbers are used for identification purposes only, and we are in no way implying that our products are original equipment parts. Prices subject to change without notice.