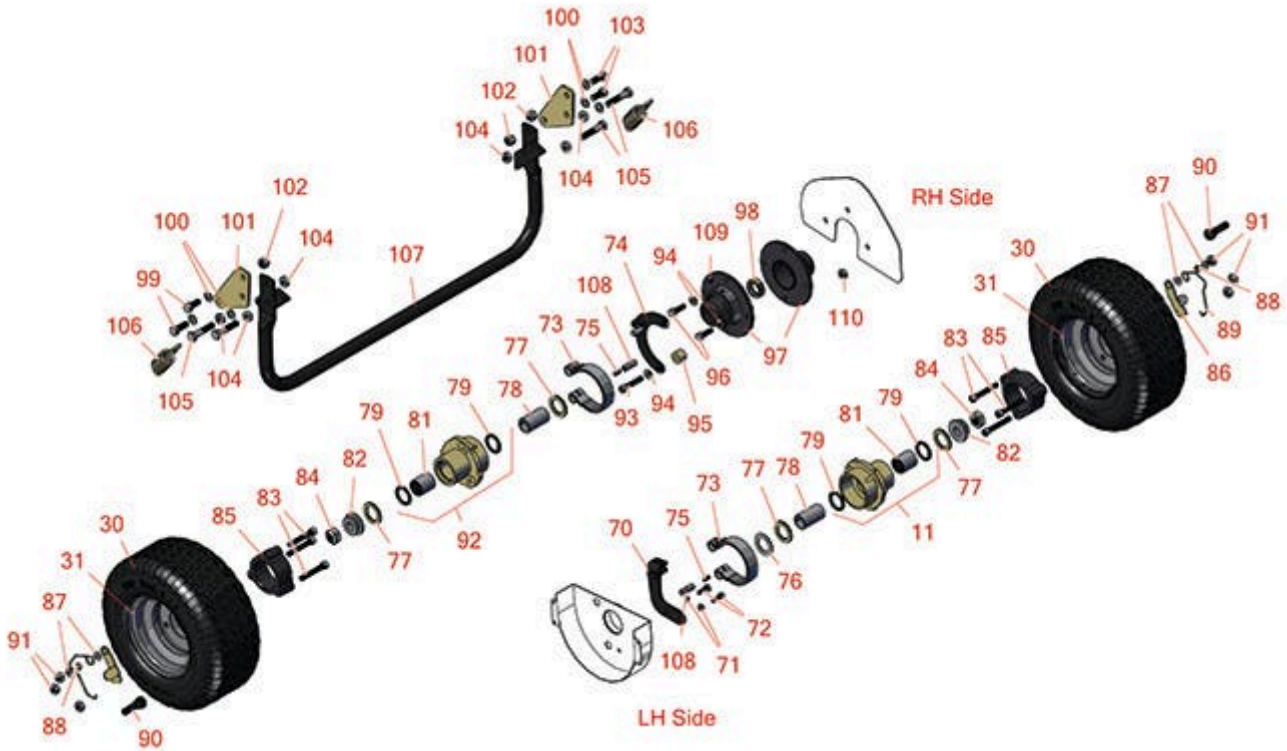
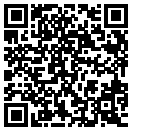




# Replaces Jacobsen Eclipse 118 Parts

Traction Unit  
Kickstand & Wheels



All original equipment manufacturers names and part numbers are used for identification purposes only, and we are in no way implying that our products are original equipment parts. Prices subject to change without notice.



# Replaces Jacobsen Eclipse 118 Parts

Traction Unit  
Kickstand & Wheels



Item R&R  
No Part No.

OEM  
Part No. Description

Qty  
Req

Order  
Quantity

## Tires

30	<b>RCT5110101</b>	554847	Tire - 11x4.00-5 Nhs (2 Ply) Carlisle Turf Saver	2
31	<b>R5002905</b>	5002905	Wheel Assy - 3x5	2

## Other Parts Available

70	<b>R164063</b>	164063	Bracket - Brake Mounting LH	1
71	<b>R3253-3</b>	3253-3, 446128, 446130	Washer - Lock 1/4	2
72	<b>R321-4</b>	321-4, 400108	Bolt - Hex HD 1/4-20 x 3/4	2
73	<b>R164056</b>	164056	Band - Brake	2
74	<b>R132663</b>	132663	Bracket - Brake Mounting RH	1
75	<b>R415513</b>	415513	Screw - Set 1/4-20 x 1/2 Cup Pt	2
76	<b>R361451</b>	361451	Flat Washer 1 x 1-1/2 Hardened Thrust	1
77	<b>R366697</b>	366697	Spacer - Bronze Thrust	4
78	<b>R366717</b>	366717	Clutch Sleeve - Wheel	2
79	<b>R366705</b>	366705	Seal - Grease	4
80	<b>R1000477</b>	1000477	Hub Assy - LH	1

*Tech Note: Includes R338766 & R366705:*

81	<b>R338766</b>	338766	Bearing - Clutch Differential Shaft	2
82	<b>R366718</b>	366716, 366718	Latching Collar - Wheel	2
83	<b>R434049</b>	434049	Bolt - Soc HD Cap 5/16-18 x 2	6
84	<b>R3296-33</b>	444820, 445718, 445801	Locknut - 5/8-18 ESNA Jam	2

All original equipment manufacturers names and part numbers are used for identification purposes only, and we are in no way implying that our products are original equipment parts. Prices subject to change without notice.



# Replaces Jacobsen Eclipse 118 Parts

*Traction Unit  
Kickstand & Wheels*



Item No	R&R Part No.	OEM Part No.	Description	Qty Req	Order Quantity
85	<b>R271920</b>	271920	Spacer - Wheel	2	
86	<b>R366719</b>	366719	Latch - Wheel	2	
87	<b>R310266</b>	310266, 452004, 452006, 452008	Washer - Flat 5/16 USS	4	
88	<b>R366716</b>	366716	Spacer - Wheel	2	
89	<b>R366704</b>	366704	Spring - Wheel Lock	2	
90	<b>R232-27</b>	232-27, 360111	Stem - Valve w/ Cap	2	
91	<b>R444718</b>	444718	Nut - 5/16-18 Center Lock YZ	6	
92	<b>R1000476</b>	1000476	Hub Assy - RH	1	
<i>Tech Note: Includes R338766 &amp; R366705:</i>					
93	<b>R434032</b>	434032	Screw - Soc HD 5/16-18 x 1-3/4	1	
94	<b>R446136</b>	446134, 446136	Washer - Lock 5/16 Zinc	5	
95	<b>R366737</b>	366737	Spacer - Wheel	1	
96	<b>R322-5</b>	400188	Bolt - Hex HD 5/16-18 x 1	4	
97	<b>R132658</b>	132658	Housing - Parking Brake	1	
98	<b>R337678</b>	337678, 365753	Seal - Clutch Shaft Bearing	1	
99	<b>RF3205</b>	400188, 400262	Bolt - Hex HD 3/8-16 x 1	2	
100	<b>R3254-6</b>	3254-6, 446140, 446142	Washer - Lock 3/8	6	
101	<b>R366796</b>	366796	Bracket - Kickstand	2	

All original equipment manufacturers names and part numbers are used for identification purposes only, and we are in no way implying that our products are original equipment parts. Prices subject to change without notice.



# Replaces Jacobsen Eclipse 118 Parts

*Traction Unit*

*Kickstand & Wheels*



Item No	R&R Part No.	OEM Part No.	Description	Qty Req	Order Quantity
102	<b>R444850</b>	444850	Nut - 3/8-16 Jam Center Lock	4	
103	<b>R400260</b>	400260	Bolt - Hex HD 3/8-16 x 7/8	2	
104	<b>R3218-3</b>	443810	Nut - 3/8-16 Jam	4	
105	<b>R400268</b>	400268	Bolt - Hex HD 3/8-16 x 1-3/4	2	
106	<b>R364164</b>	364164	Spring	2	
107	<b>R132674</b>	132674	Kickstand - 22 in	1	
108	<b>R366742</b>	366742	Pivot Pin w/Set Screw - Brake Band	2	
109	<b>R302-5</b>	302-5, 471214, 471223, 471226	Fitting - Grease	1	
110	<b>R443106</b>	443106	Nut - 5/16-18 Y/Zinc Plated	4	

All original equipment manufacturers names and part numbers are used for identification purposes only, and we are in no way implying that our products are original equipment parts. Prices subject to change without notice.