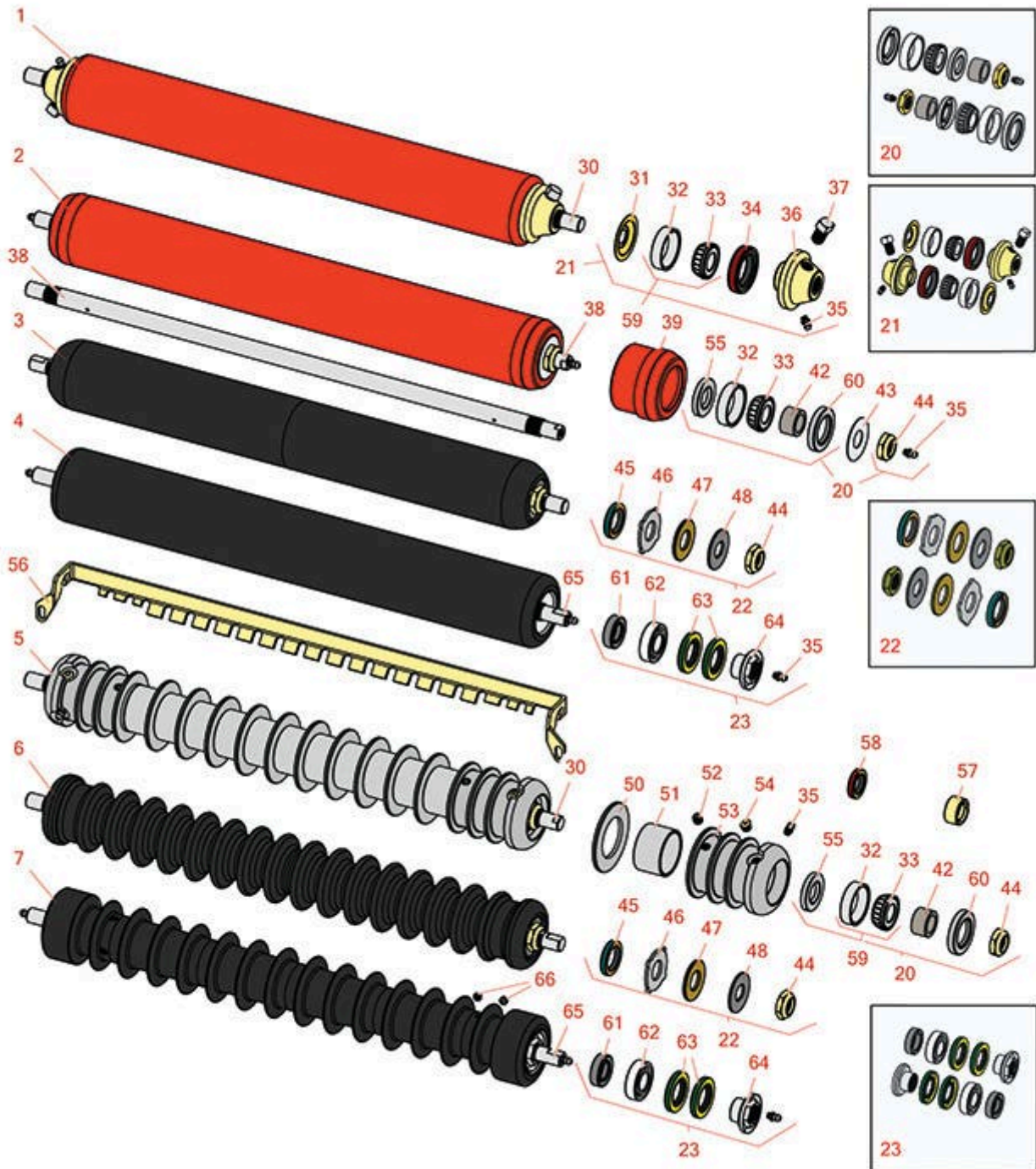




# Replaces Jacobsen LF-3407 Parts

7" Cutting Unit  
Front Rollers



All original equipment manufacturers names and part numbers are used for identification purposes only, and we are in no way implying that our products are original equipment parts. Prices subject to change without notice.



# Replaces Jacobsen LF-3407 Parts

7" Cutting Unit  
Front Rollers



Item No	R&R Part No.	OEM Part No.	Description	Qty Req	Order Quantity
---------	--------------	--------------	-------------	---------	----------------

## R&R Front Rollers

1	<b>R700530</b>	132202	Roller - Smooth Tubular Steel	0	
<i>Tech Note: Constructed with a through shaft, this heavy-duty roller uses greasable tapered bearings for extended life.:</i>					
2	<b>R700535</b>		Roller - Smooth Tubular Steel	0	
<i>Tech Note: Constructed with a through shaft, this heavy duty roller uses greasable tapered bearings for extended life.:</i>					
3	<b>R1013610</b>		Roller - Smooth UHMW Polyethylene	0	
<i>Tech Note: Machined from solid UHMW, this low maintenance roller uses a 1" solid stainless steel shaft and requires no grease. UHMW material prevents build-up of debris.:</i>					
4	<b>R1013675</b>		Roller - Fusion Smooth UHMW Polyethylene	0	
<i>Tech Note: Machined from solid UHMW plastic that prevents build-up of debris. This roller turns on precision stainless ball bearings.:</i>					
5	<b>R100100</b>	123268	Roller - Grooved Repairable Steel	0	
<i>Tech Note: Constructed with a through shaft and greasable ball bearings, this roller can be repaired by unscrewing the ends and replacing the series of washers and spacers.:</i>					
6	<b>R1013602</b>		Roller - Grooved UHMW Polyethylene	0	
<i>Tech Note: Machined from solid UHMW, this low maintenance roller rotates around a 1" solid stainless steel shaft and requires no bearings or grease. Patented groove design and smooth UHMW material prevents build-up of debris.:</i>					
7	<b>R1013670</b>		Roller - Grooved UHMW Polyethylene	0	
<i>Tech Note: Machined from solid UHMW plastic that prevents build-up of debris. This roller has a patented deep groove design and turns on precision stainless ball bearings.:</i>					

## Overhaul Kits

20	<b>R700505</b>		Conversion Kit - Roller	1	
----	----------------	--	-------------------------	---	--

All original equipment manufacturers names and part numbers are used for identification purposes only, and we are in no way implying that our products are original equipment parts. Prices subject to change without notice.



# Replaces Jacobsen LF-3407 Parts

7" Cutting Unit  
Front Rollers



Item No	R&R Part No.	OEM Part No.	Description	Qty Req	Order Quantity
---------	--------------	--------------	-------------	---------	----------------

*Tech Note: Includes: 2 each: R254-78 Bearing Cones, R254-79 Bearing Cups, R328062 Seals, R412063 Square Head Set Screws, R700501 Roller Ends & R700502 Grease Retainers.:*

21	<b>R101399</b>		Overhaul Kit - UHMW 2 Pc Roller	1	
----	----------------	--	---------------------------------	---	--

*Tech Note: Fits all R&R 2-1/2" - 3-1/2" Dia. Black UHMW Plastic Rollers that do not use ball bearings.. Includes 2 ea.: R1503230 Star Washers, R1503470 Seals, R150333 Thrust Washers, R3296-15 Locknuts, R1503471 Bronze Thrust Washers:*

22	<b>R100139</b>		Overhaul Kit - Roller	1	
----	----------------	--	-----------------------	---	--

*Tech Note: Includes 2 ea.: R254-67 Bearing Cups, R254-68 Bearing Cones, R337593 Seals, R253-152 Seals R3001762 Wear Sleeves, R3000698 Washers & R445718 Locknuts:*

23	<b>R114-5430</b>	114-5430	Overhaul Kit - Roller	1	
----	------------------	----------	-----------------------	---	--

*Tech Note: Includes 4 ea.: R112-7494 Seals; 2 ea.: R302-5 Grease Zerks, R114-3717 Seals, R112-5290 Bearings & R114-3745 Locknuts:*

## Other Parts Available

30	<b>R100102</b>	3003416, 366589	Shaft - Roller	1	
----	----------------	--------------------	----------------	---	--

31	<b>R700502</b>	700502	Retainer - Grease	2	
----	----------------	--------	-------------------	---	--

32	<b>R254-79</b>	254-79, 4121175	Cup - Bearing	2	
----	----------------	--------------------	---------------	---	--

*Tech Note: Use R254-79M installation mandrel to properly install race.:*

33	<b>R254-78</b>	254-78, 385174, 4121174, 4135152	Tapered Bearing Cone	2	
----	----------------	---	----------------------	---	--

34	<b>R328062</b>	328062	Seal - Roller	2	
----	----------------	--------	---------------	---	--

35	<b>R302-5</b>	302-5, 471214, 471223, 471226	Fitting - Grease	2	
----	---------------	--	------------------	---	--

36	<b>R700501</b>	700501	Roller End - Regreasable	2	
----	----------------	--------	--------------------------	---	--

37	<b>R412063</b>	412063	Screw - Sq. HD. Set	2	
----	----------------	--------	---------------------	---	--

All original equipment manufacturers names and part numbers are used for identification purposes only, and we are in no way implying that our products are original equipment parts. Prices subject to change without notice.



# Replaces Jacobsen LF-3407 Parts

7" Cutting Unit  
Front Rollers



Item No	R&R Part No.	OEM Part No.	Description	Qty Req	Order Quantity
38	<b>R700538</b>	700538	Shaft - Fits R700535	1	
39	<b>R170308</b>		Roller End - Solid 3	2	
42	<b>R5-4038</b>	5-4038	Sleeve - Wear Reel Shaft	2	
43	<b>R150504</b>	150504	Washer	2	
44	<b>R3296-15</b>	3296-15, 367029, 444742	Locknut - 3/4-16 Nylon Jam	2	
45	<b>R1503470</b>		Seal - Inner Wiper	2	
46	<b>R1503230</b>		Washer - Thrust Outer Keyed	2	
47	<b>R1503471</b>		Washer - Thrust SAE660 Bronze	2	
48	<b>R150333</b>		Washer - Flat Keyed Outer SS	2	
50	<b>R150673</b>	150673	Washer - 3 Repairable Roller	11	
51	<b>R150676</b>	150676	Spacer - 2-3/4 Dia x 1-1/4 L	10	
52	<b>R150691</b>		Screw - Set Nyloc 3/8-16 x 3/8	4	
53	<b>R100103</b>		Roller End - Grooved	2	
54	<b>R170714</b>	170714, 471240, 471242	Fitting - Pressure Relief	2	
55	<b>R253-122</b>		Seal	2	
56	<b>R100110</b>	100110, 391202	Scraper - Fits R100100	1	
<i>Tech Note: Fits R100100 3" Grooved Roller - 1-1/4" Spacing:</i>					
57	<b>R3005156</b>	3005156	Sleeve - Wear Hardened	2	
58	<b>R338647</b>	338647	Seal - Inner Roller	2	
59	<b>R500534</b>	500534, R500534	Bearing - with Cup	2	

All original equipment manufacturers names and part numbers are used for identification purposes only, and we are in no way implying that our products are original equipment parts. Prices subject to change without notice.



## Replaces Jacobsen LF-3407 Parts

7" Cutting Unit  
Front Rollers



Item No	R&R Part No.	OEM Part No.	Description	Qty Req	Order Quantity
60	<b>R253-117</b>	253-117, 3004882	Seal - Outer Triple Lip	2	
61	<b>R114-3717</b>		Seal	2	
62	<b>R112-5290</b>		Bearing - Stainless	2	
63	<b>R112-7494</b>		Seal	4	
64	<b>R114-3745</b>		Locknut - Bearing - Stainless	2	
65	<b>R1013671</b>		Shaft - Roller	1	
66	<b>R300106</b>		Screw - Set 5/16-18 x 1/4	4	

All original equipment manufacturers names and part numbers are used for identification purposes only, and we are in no way implying that our products are original equipment parts. Prices subject to change without notice.