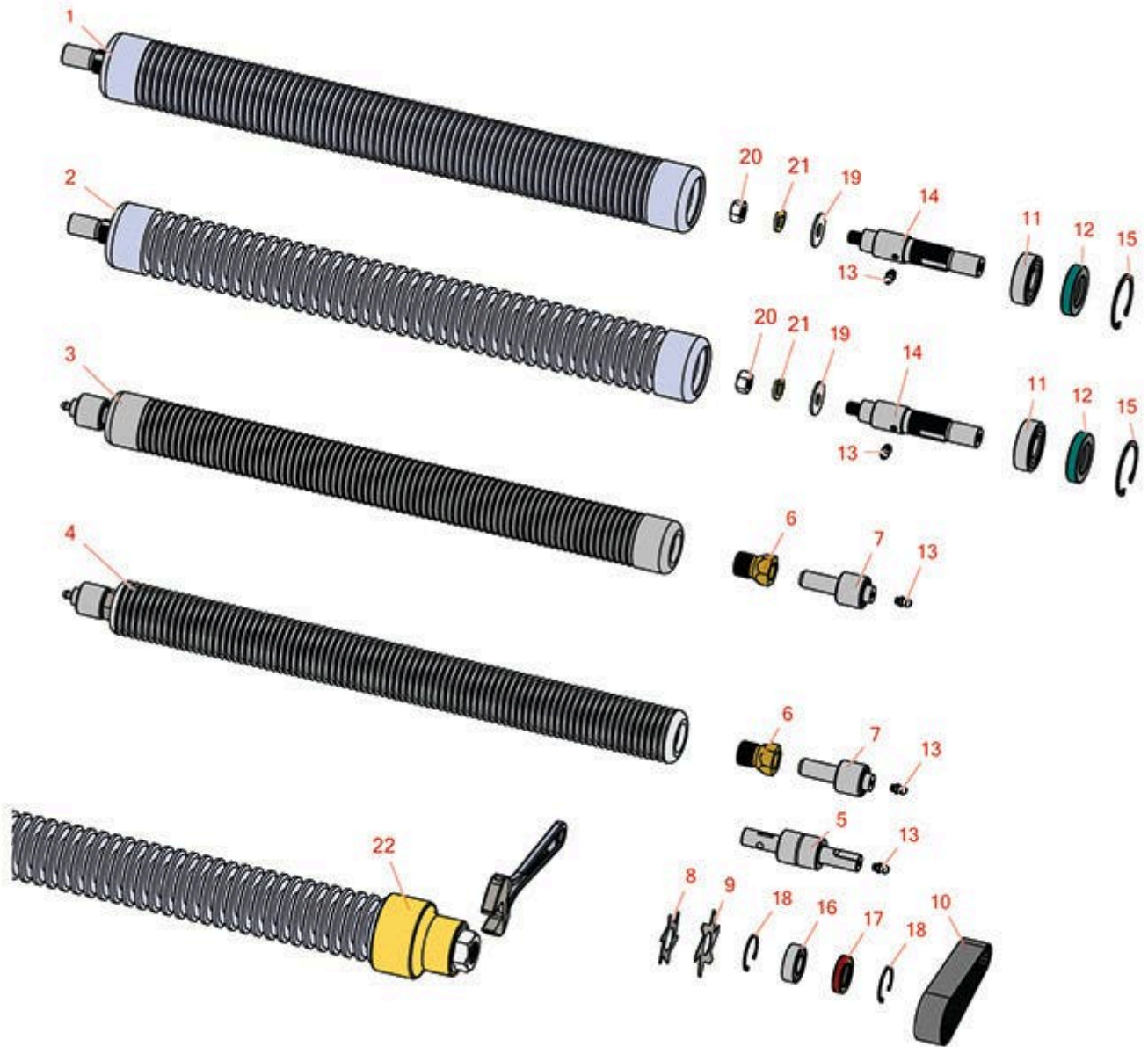




# Replaces Jacobsen PGM 19 Parts

Cutting Unit  
Groomer Roller



All original equipment manufacturers names and part numbers are used for identification purposes only, and we are in no way implying that our products are original equipment parts. Prices subject to change without notice.



# Replaces Jacobsen PGM 19 Parts

Cutting Unit  
Groomer Roller



Item R&R  
No Part No.

OEM  
Part No.

Description

Qty  
Req

Order  
Quantity

## Groomer Roller Parts

1	<b>R390899</b>	390899	Roller Tube - Grooved 2.5 x 22 - 1/4 in Spacing	1
<i>Tech Note: Note: W/ 1/4 Spacing:</i>				
2	<b>R390900</b>	390900	Roller - Grooved 2-1/2 x 22	1
<i>Tech Note: Note: w/ 1/2 Spacing:</i>				
3	<b>R131927</b>	131927	Roller - Grooved Machined Aluminum	1
<i>Tech Note: Includes Bearing &amp; Collar:</i>				
3	<b>R131959</b>	131959	Groomer Roller - Grooved Machined Aluminum	1
<i>Tech Note: 2" DIA. 19" Long. Includes Bearing &amp; Collar:</i>				
4	<b>R338485</b>	338485	Roller Tube Only - Grooved Machined Aluminum	1
4	<b>R338519</b>	338519	Groomer Roller - Grooved Machined Aluminum	1
5	<b>R554571</b>	554571	Bearing	2
6	<b>R364541</b>	364541	Collar - Locking	2
7	<b>R554570</b>	554570	Bearing - w/Zerk Fits Groomer	2
8	<b>R363808</b>	363808	Blade - V-Cut 2 Dia	85
9	<b>R365230</b>	365230	Verti-Cut Blade - 2-1/2 Dia.	85
10	<b>R363806</b>	363806	Belt - Fits Turf Groomer	1
10	<b>R365235</b>	365235	Belt - Timing Fits 2-1/2 Groomers	1
11	<b>R365330</b>	365330	Bearing	2
12	<b>R338773</b>	338773	Seal	2

All original equipment manufacturers names and part numbers are used for identification purposes only, and we are in no way implying that our products are original equipment parts. Prices subject to change without notice.



# Replaces Jacobsen PGM 19 Parts

Cutting Unit

Groomer Roller



Item No	R&R Part No.	OEM Part No.	Description	Qty Req	Order Quantity
13	<b>R302-5</b>	302-5, 471214, 471223, 471226	Fitting - Grease	2	
14	<b>R338772</b>	338772	Shaft - Roller - RH	2	
15	<b>R458113</b>	458113	Ring - Snap Fits Groomer	2	
16	<b>R365229</b>	365229	Bearing	2	
17	<b>R336962</b>	336962	Seal	2	
18	<b>R458461</b>	458461	Snap Ring	4	
19	<b>R453013</b>	452008, 453013	Washer - Flat 7/16	2	
20	<b>R443816</b>	443816	Nut - 7/16-20 Hex Jam	2	
21	<b>R446146</b>	446146, 446148	Lock Washer - 7/16	2	
22	<b>R262</b>		Bearing Puller - Fits Groomer Roller	1	

*Tech Note: Excellent tool to quickly remove bearings and shafts from R390899 and R390900 groomer rollers. Puller Fits Jacobsen & R&R 2-1/2" Groomer Rollers:*

All original equipment manufacturers names and part numbers are used for identification purposes only, and we are in no way implying that our products are original equipment parts. Prices subject to change without notice.