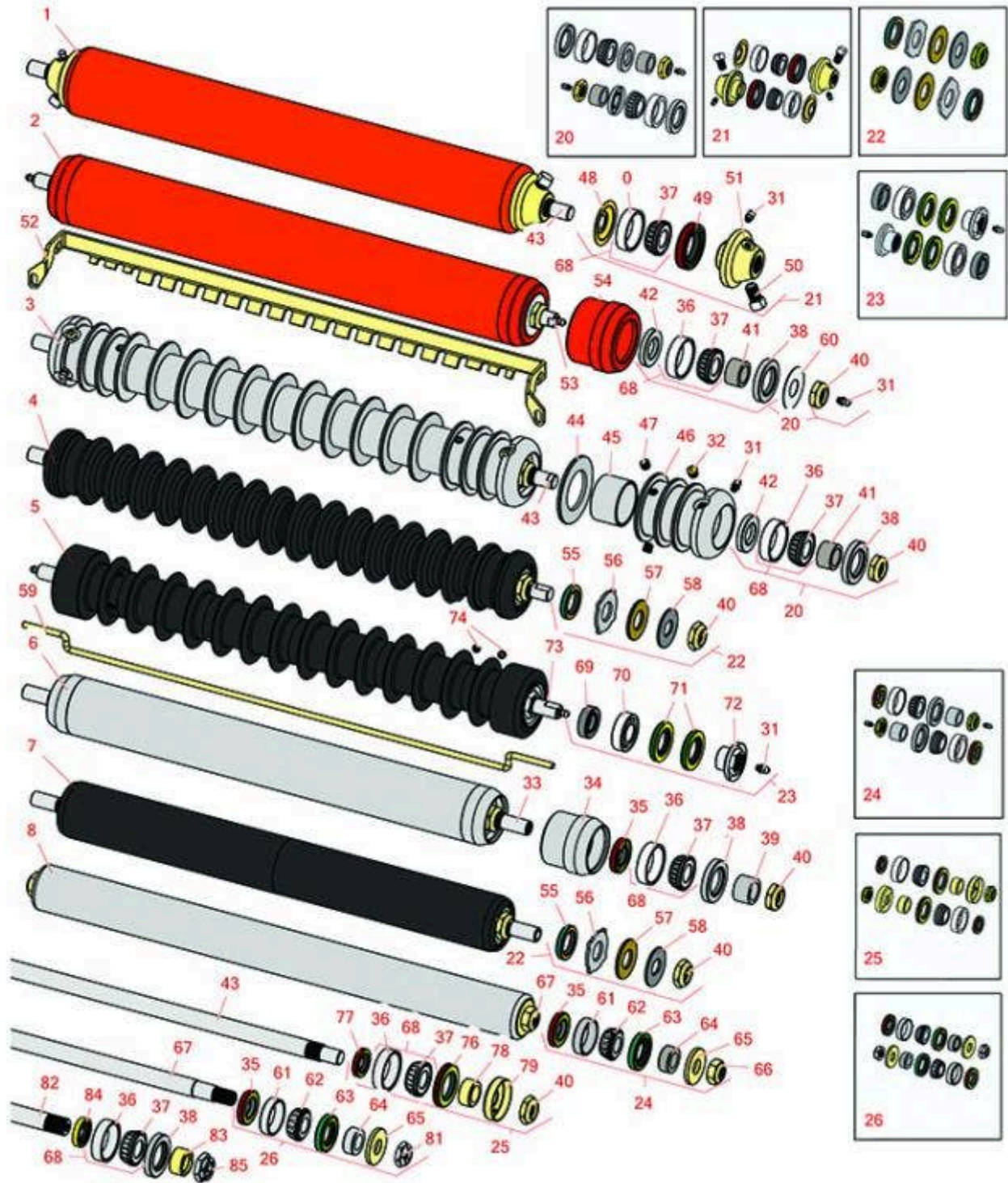
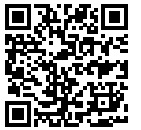




# Replaces Jacobsen LF-570 Parts

7" Cutting Unit  
Rollers



All original equipment manufacturers names and part numbers are used for identification purposes only, and we are in no way implying that our products are original equipment parts. Prices subject to change without notice.



# Replaces Jacobsen LF-570 Parts

7" Cutting Unit  
Rollers



Item No	R&R Part No.	OEM Part No.	Description	Qty Req	Order Quantity
---------	--------------	--------------	-------------	---------	----------------

## R&R Front Rollers

1	<b>R700530</b>	132202	Roller - Smooth Tubular Steel	0	
---	----------------	--------	-------------------------------	---	--

*Tech Note: Constructed with a through shaft, this heavy-duty roller uses greasable tapered bearings for extended life.:*

2	<b>R700535</b>		Roller - Smooth Tubular Steel	0	
---	----------------	--	-------------------------------	---	--

*Tech Note: Constructed with a through shaft, this heavy duty roller uses greasable tapered bearings for extended life.:*

3	<b>R100100</b>	123268	Roller - Grooved Repairable Steel	0	
---	----------------	--------	-----------------------------------	---	--

*Tech Note: Constructed with a through shaft and greasable ball bearings, this roller can be repaired by unscrewing the ends and replacing the series of washers and spacers.:*

4	<b>R1013602</b>		Roller - Grooved UHMW Polyethylene	0	
---	-----------------	--	------------------------------------	---	--

*Tech Note: Machined from solid UHMW, this low maintenance roller rotates around a 1" solid stainless steel shaft and requires no bearings or grease. Patented groove design and smooth UHMW material prevents build-up of debris.:*

5	<b>R1013670</b>		Roller - Grooved UHMW Polyethylene	0	
---	-----------------	--	------------------------------------	---	--

*Tech Note: Machined from solid UHMW plastic that prevents build-up of debris. This roller has a patented deep groove design and turns on precision stainless ball bearings.:*

## R&R Rear Rollers

6	<b>R100105</b>	100105, 1002446, 1003728	Roller - Smooth Heavy Duty Tubular Steel	0	
---	----------------	--------------------------------	--	---	--

*Tech Note: Constructed with a through shaft, this heavy duty roller uses tapered bearings for extended life. This roller body measures 21" in length.:*

7	<b>R1013662</b>		Roller - Smooth UHMW Polyethylene	0	
---	-----------------	--	-----------------------------------	---	--

*Tech Note: Machined from solid UHMW, this low maintenance roller uses a 1" solid stainless steel shaft and requires no grease. UHMW material prevents build-up of debris.:*

All original equipment manufacturers names and part numbers are used for identification purposes only, and we are in no way implying that our products are original equipment parts. Prices subject to change without notice.



# Replaces Jacobsen LF-570 Parts

7" Cutting Unit  
Rollers



Item No	R&R Part No.	OEM Part No.	Description	Qty Req	Order Quantity
8	<b>R1000770</b>	1000770	Roller - Smooth Heavy Duty Tubular Steel	0	

*Tech Note: Constructed with a through shaft, this heavy-duty roller uses tapered bearings for extended life. Body length measures 23-1/4".:*

## Overhaul Kits

20	<b>R100137</b>		Overhaul Kit - Roller	1	
<i>Tech Note: Includes 2 ea.: R3296-15 Locknuts, R302-5 Grease Fittings, R253-122 Seals, R253-117 Seals, R5-4038 Wear Sleeves, R254-78 Bearings &amp; R254-79 Bearing Cups:</i>					
21	<b>R700505</b>		Conversion Kit - Roller	1	
<i>Tech Note: Includes: 2 each: R254-78 Bearing Cones, R254-79 Bearing Cups, R328062 Seals, R412063 Square Head Set Screws, R700501 Roller Ends &amp; R700502 Grease Retainers.:</i>					
22	<b>R101399</b>		Overhaul Kit - UHMW 2 Pc Roller	1	
<i>Tech Note: Fits all R&amp;R 2-1/2" - 3-1/2" Dia. Black UHMW Plastic Rollers that do not use ball bearings.. Includes 2 ea.: R1503230 Star Washers, R1503470 Seals, R150333 Thrust Washers, R3296-15 Locknuts, R1503471 Bronze Thrust Washers:</i>					
23	<b>R114-5430</b>	114-5430	Overhaul Kit - Roller	1	
<i>Tech Note: Includes 4 ea.: R112-7494 Seals; 2 ea.: R302-5 Grease Zerks, R114-3717 Seals, R112-5290 Bearings &amp; R114-3745 Locknuts:</i>					
24	<b>R100136</b>		Overhaul Kit - Roller	1	
<i>Tech Note: Includes 2 ea.: R150674 Wear Sleeves, R253-152 Seals, R253-117 Seals, R254-78 Bearings, R254-79 Bearing Cups, R3296-15 Locknuts &amp; R302-5 Grease Fittings:</i>					
25	<b>R100133</b>		Overhaul Kit - Roller	1	
<i>Tech Note: Includes: 2ea: R254-78 Bearings, R254-79 Bearing Cups, R3296-15 Locknuts, R338645 Cup Deflectors, R338646 Seals, R338647 Seals, &amp; R366168 Wear Sleeves:</i>					
26	<b>R100139</b>		Overhaul Kit - Roller	1	
<i>Tech Note: Includes 2 ea.: R254-67 Bearing Cups, R254-68 Bearing Cones, R337593 Seals, R253-152 Seals R3001762 Wear Sleeves, R3000698 Washers &amp; R445718 Locknuts:</i>					

## Other Parts Available

All original equipment manufacturers names and part numbers are used for identification purposes only, and we are in no way implying that our products are original equipment parts. Prices subject to change without notice.



# Replaces Jacobsen LF-570 Parts

7" Cutting Unit  
Rollers



Item No	R&R Part No.	OEM Part No.	Description	Qty Req	Order Quantity
31	<b>R302-5</b>	302-5, 471214, 471223, 471226	Fitting - Grease	2	
32	<b>R170714</b>	170714, 471240, 471242	Fitting - Pressure Relief	2	
33	<b>R100106</b>	100106	Shaft - Fits HD Rear Roller	1	
34	<b>R61-0380</b>		Roller End - Cap Solid	1	
35	<b>R253-152</b>	3001656	Seal - Inner Roller	2	
36	<b>R254-79</b>	254-79, 4121175	Cup - Bearing	2	
<i>Tech Note: Use R254-79M installation mandrel to properly install race.:</i>					
37	<b>R254-78</b>	254-78, 385174, 4121174, 4135152	Tapered Bearing Cone	2	
38	<b>R253-117</b>	253-117, 3004882	Seal - Outer Triple Lip	2	
39	<b>R150674</b>	150674	Sleeve - Wear 3/4 Plated	2	
40	<b>R3296-15</b>	3296-15, 367029, 444742	Locknut - 3/4-16 Nylon Jam	2	
41	<b>R5-4038</b>	5-4038	Sleeve - Wear Reel Shaft	2	
42	<b>R253-122</b>		Seal	2	
43	<b>R100102</b>	3003416, 366589	Shaft - Roller	1	
44	<b>R150673</b>	150673	Washer - 3 Repairable Roller	11	
45	<b>R150676</b>	150676	Spacer - 2-3/4 Dia x 1-1/4 L	0	
46	<b>R100103</b>		Roller End - Grooved	2	

All original equipment manufacturers names and part numbers are used for identification purposes only, and we are in no way implying that our products are original equipment parts. Prices subject to change without notice.



# Replaces Jacobsen LF-570 Parts

7" Cutting Unit  
Rollers



Item No	R&R Part No.	OEM Part No.	Description	Qty Req	Order Quantity
47	<b>R150691</b>		Screw - Set Nyloc 3/8-16 x 3/8	4	
48	<b>R700502</b>	700502	Retainer - Grease	2	
49	<b>R328062</b>	328062	Seal - Roller	2	
50	<b>R412063</b>	412063	Screw - Sq. HD. Set	2	
51	<b>R700501</b>	700501	Roller End - Regreasable	2	
52	<b>R100110</b>	100110, 391202	Scraper - Fits R100100	1	
<i>Tech Note: Fits R100100 3" Grooved Roller - 1-1/4" Spacing:</i>					
52	<b>R391202</b>	391202	Scraper - Fits OEM Roller	1	
53	<b>R700538</b>	700538	Shaft - Fits R700535	1	
54	<b>R170308</b>		Roller End - Solid 3	2	
55	<b>R1503470</b>		Seal - Inner Wiper	2	
56	<b>R1503230</b>		Washer - Thrust Outer Keyed	2	
57	<b>R1503471</b>		Washer - Thrust SAE660 Bronze	2	
58	<b>R150333</b>		Washer - Flat Keyed Outer SS	2	
59	<b>R3005316</b>	3005316	Scraper - 24 Rear Roller (Rod)	1	
59	<b>R3009280</b>	3009280	Scraper - 22 Rear Roller (Rod)	1	
60	<b>R150504</b>	150504	Washer	1	
61	<b>R254-67</b>	307108, 5000625, 500625	Cup - Bearing	2	
62	<b>R254-68</b>	307109, 5000625, 500625	Tapered Bearing Cone	2	
63	<b>R337593</b>	3000983, 337593	Seal	2	

All original equipment manufacturers names and part numbers are used for identification purposes only, and we are in no way implying that our products are original equipment parts. Prices subject to change without notice.





# Replaces Jacobsen LF-570 Parts

7" Cutting Unit  
Rollers



Item No	R&R Part No.	OEM Part No.	Description	Qty Req	Order Quantity
64	<b>R3001762</b>	30001762, 3001762	Sleeve - Wear Hardened	2	
65	<b>R3000698</b>	3000698	Washer	2	
66	<b>R3296-33</b>	444820, 445718, 445801	Locknut - 5/8-18 ESNA Jam	2	
67	<b>R3001654</b>	3001654	Shaft - Roller	1	
68	<b>R500534</b>	500534, R500534	Bearing - with Cup	2	
69	<b>R114-3717</b>		Seal	2	
70	<b>R112-5290</b>		Bearing - Stainless	2	
71	<b>R112-7494</b>		Seal	4	
72	<b>R114-3745</b>		Locknut - Bearing - Stainless	2	
73	<b>R1013671</b>		Shaft - Roller	1	
74	<b>R300106</b>		Screw - Set 5/16-18 x 1/4	4	

## Replaces Jacobsen 123268 3" Roller Parts

76	<b>R338646</b>	338646	Seal - Outer Roller	2	
77	<b>R338647</b>	338647	Seal - Inner Roller	2	
78	<b>R366168</b>	336168, 366168	Sleeve - Wear Hardened	2	
79	<b>R338645</b>	338645	Deflector - Cup	2	

## Replaces Jacobsen 1000770 2" Roller Parts

81	<b>R445718</b>	445718, 445801	Locknut - 5/8-18 All Metal	2	
----	----------------	-------------------	----------------------------	---	--

## Replaces Jacobsen 1002446 (24") & 1003728 (22") 2-1/2" Solid Roller Parts

82	<b>R3005318</b>	3005318	Shaft - Fits OEM 1002446	1	
----	-----------------	---------	--------------------------	---	--

All original equipment manufacturers names and part numbers are used for identification purposes only, and we are in no way implying that our products are original equipment parts. Prices subject to change without notice.



# Replaces Jacobsen LF-570 Parts

7" Cutting Unit  
Rollers



Item No	R&R Part No.	OEM Part No.	Description	Qty Req	Order Quantity
82	<b>R3008027</b>	3008027	Shaft - Fits 1003728 Roller	1	
83	<b>R3005156</b>	3005156	Sleeve - Wear Hardened	2	
84	<b>R548274</b>	548274	Seal - Oil	2	
85	<b>R445798</b>	445798	Locknut - 3/4-16 Stover	2	

All original equipment manufacturers names and part numbers are used for identification purposes only, and we are in no way implying that our products are original equipment parts. Prices subject to change without notice.