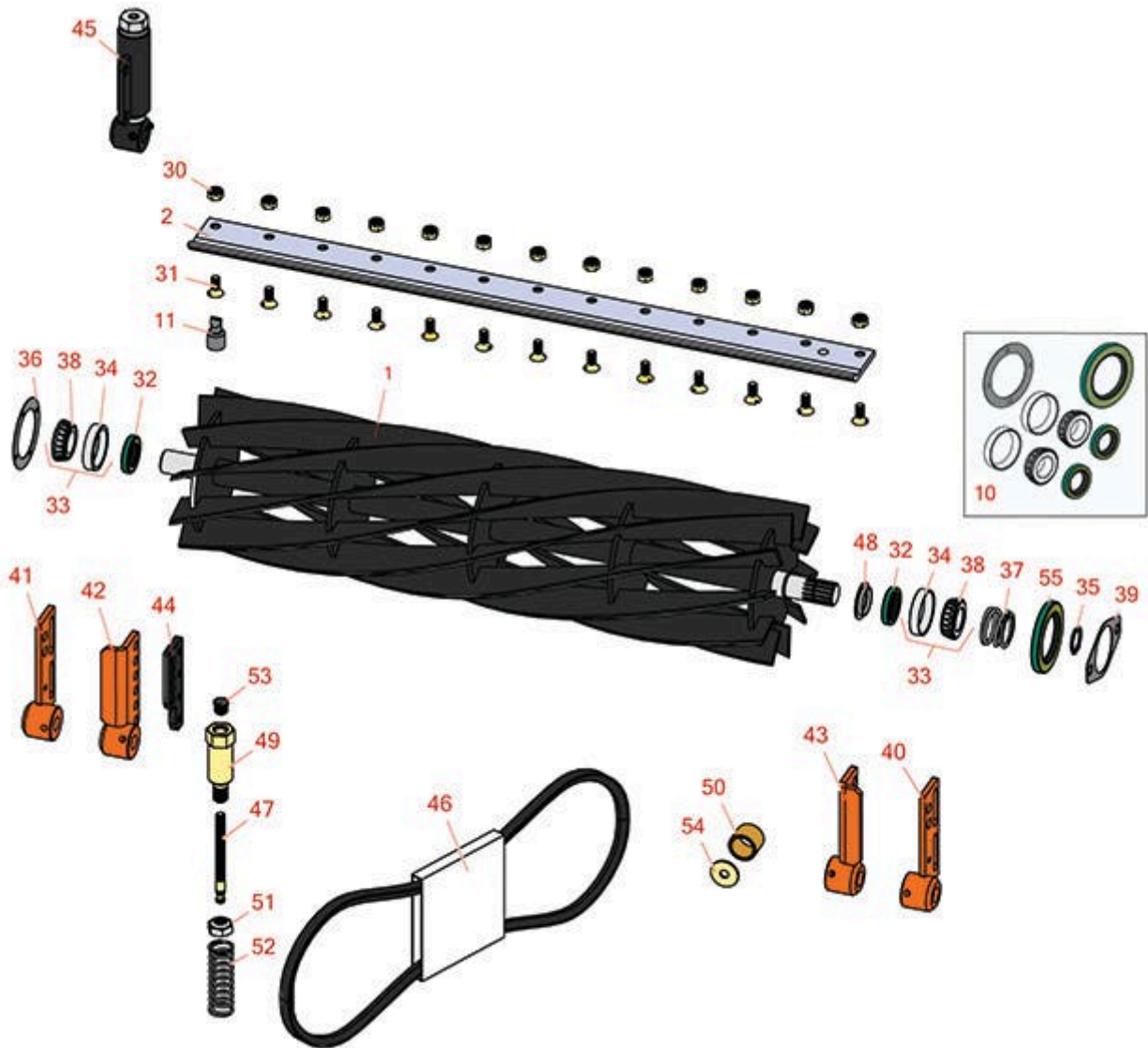




Replaces Jacobsen Tri-King 1670 Parts

Cutting Unit
Reel & Bedknife



All original equipment manufacturers names and part numbers are used for identification purposes only, and we are in no way implying that our products are original equipment parts. Prices subject to change without notice.



Replaces Jacobsen Tri-King 1670 Parts

Cutting Unit
Reel & Bedknife



Item No	R&R Part No.	OEM Part No.	Description	Qty Req	Order Quantity
---------	--------------	--------------	-------------	---------	----------------

R&R Reels, Lifetime Guaranteed

1	R503274	122547, 503274	Reel - 5 Blade LH 26 in	2	
---	----------------	-------------------	-------------------------	---	--

Tech Note: Note drive motor position when seated in the mower facing forward. This Reel should have the motor on the RIGHT hand side:

1	R503275	122546, 503275	Reel - 5 Blade RH 26 in	1	
---	----------------	-------------------	-------------------------	---	--

Tech Note: Note drive motor position when seated in the mower facing forward. This Reel should have the motor on the LEFT hand side:

1	R5002088	5002088	Reel - 7 Blade RH 26 in	2	
---	-----------------	---------	-------------------------	---	--

Tech Note: Note drive motor position when seated in the mower facing forward. This Reel should have the motor on the LEFT hand side:

1	R5002087	5002087	Reel - 7 Blade LH - 26 in	1	
---	-----------------	---------	---------------------------	---	--

Tech Note: Note drive motor position when seated in the mower facing forward. This Reel should have the motor on the RIGHT hand side:

1	R503276	122549, 503276	Reel - 10 Blade LH/Center - 26 in	2	
---	----------------	-------------------	-----------------------------------	---	--

Tech Note: Note drive motor position when seated in the mower facing forward. This Reel should have the motor on the RIGHT hand side:

1	R503277	122548, 503277	Reel - 10 Blade RH - 26 in	1	
---	----------------	-------------------	----------------------------	---	--

Tech Note: Note drive motor position when seated in the mower facing forward. This Reel should have the motor on the LEFT hand side:

R&R Bedknives, Lifetime Guaranteed

2	R3000249	3000249, 336419, 554284	Bedknife - 7/16 - 26 Inch	3	
---	-----------------	-------------------------------	---------------------------	---	--

Overhaul Kits & Service Tools

All original equipment manufacturers names and part numbers are used for identification purposes only, and we are in no way implying that our products are original equipment parts. Prices subject to change without notice.



Replaces Jacobsen Tri-King 1670 Parts

Cutting Unit
Reel & Bedknife



Item No	R&R Part No.	OEM Part No.	Description	Qty Req	Order Quantity
10	R100131		Overhaul Kit - Cutting Unit	0	
<i>Tech Note: Includes 2 ea.: R254-72 Bearing Cups, R254-94 Bearing Cones, R337593 Seals; 1 ea.: R338362 Seal & R364147 Gasket:</i>					
11	R101272T		Bedknife Screw Driver Tool	0	
<i>Tech Note: Easily install and remove bed knife screws with the help of a ratchet. Tool manufactured with hardened alloy steel.:</i>					
Other Parts Available					
30	R101271	445684	Nut - Bedknife	11	
31	R101270	402698, 403757	Screw - Bedknife 3/8-24 x 13/16	11	
32	R337593	3000983, 337593	Seal	2	
33	R500596	500596	Tapered Bearing Set - Cup and Cone	2	
34	R254-72	313456	Cup - Bearing	2	
35	R458039	458039	Ring - Retaining	1	
36	R364147	364147	Gasket - Cover	1	
37	R364148	364148	Spring - Reel Brg Tension	1	
38	R254-94	313089	Tapered Bearing Cone	2	
39	R364777	364777	Gasket - Motor End	1	
40	R132313	132313	Bracket - Roller LH	1	
41	R132312	132312	Bracket - Roller RH	1	
42	R132028	132028	Bracket - Front H.O.C. RH	1	
43	R132029	132029	Bracket - Front H.O.C. LH	1	

All original equipment manufacturers names and part numbers are used for identification purposes only, and we are in no way implying that our products are original equipment parts. Prices subject to change without notice.



Replaces Jacobsen Tri-King 1670 Parts

Cutting Unit
Reel & Bedknife



Item No	R&R Part No.	OEM Part No.	Description	Qty Req	Order Quantity
44	R338859	338859	Plate - Backup Roller Bracket	2	
45	R131879	131879	Bracket Adj Assy - Rear Roller	2	
46	R390704	390704	Belt - Mower	1	
47	R364265	364265	Screw - Adjusting Reel 3/8-16 Thd	2	
48	R364275	364275	Disc - Reel Shaft	2	
49	R365994	365994	Handle - Adjusting 3/8-16 Thread	2	
50	R364140	364140	Bushing	2	
<i>Tech Note: Pull Frame:</i>					
51	R3296-33	444820, 445718, 445801	Locknut - 5/8-18 ESNA Jam	2	
52	R366973	366973	Spring - Reel Adjusting	2	
53	R472519	472519	Plug - Adjusting Handle	2	
54	R319755	319755	Washer - Spring Mt	1	
55	R338362	338362	Seal - Oil Reel	1	

All original equipment manufacturers names and part numbers are used for identification purposes only, and we are in no way implying that our products are original equipment parts. Prices subject to change without notice.