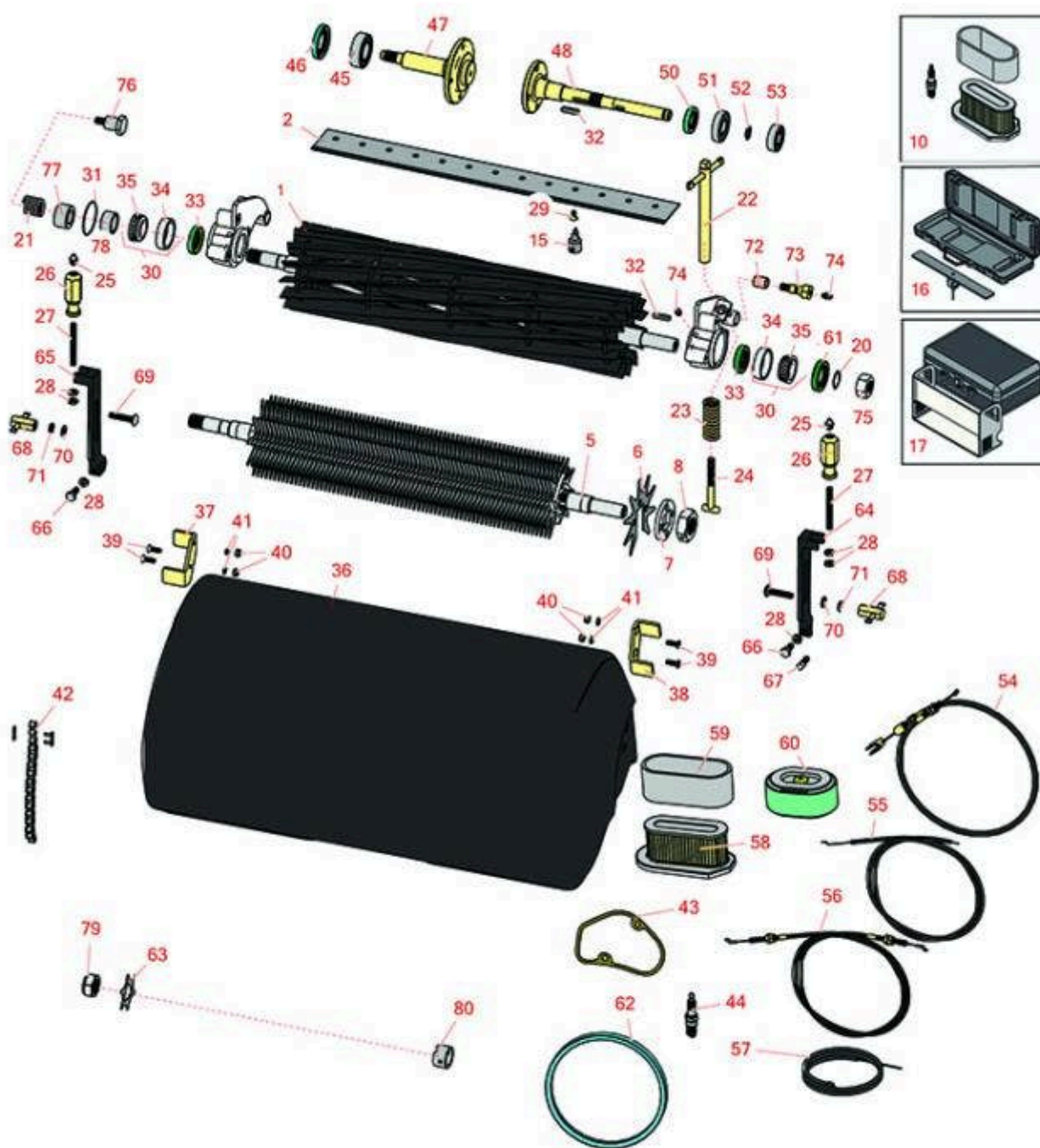




# Replaces John Deere 220A Walk-Behind Greens Mower Parts

Cutting Unit  
Reel & Bedknife



All original equipment manufacturers names and part numbers are used for identification purposes only, and we are in no way implying that our products are original equipment parts. Prices subject to change without notice.



# Replaces John Deere 220A Walk-Behind Greens Mower Parts

Cutting Unit  
Reel & Bedknife



Item No	R&R Part No.	OEM Part No.	Description	Qty Req	Order Quantity
---------	--------------	--------------	-------------	---------	----------------

## R&R Reels, Lifetime Guaranteed

1	RAMT537	AMT2886, AMT537	Reel - 11 Blade 22in	1	
---	---------	--------------------	----------------------	---	--

*Detail Description: R&R Reel blades are expertly crafted from premium high carbon-boron alloy steel, heat-treated to perfectly complement both R&R and OEM bedknives. Each reel undergoes precision cylindrical grinding on bearing surfaces, followed by relief grinding for optimal performance. Advanced computer balancing ensures extended reel and bearing life. Backed by our lifetime guarantee against defects in materials and craftsmanship under normal use, R&R Reels deliver unmatched durability and cutting precision you can trust.:*

1	R130240		Reel - 14 Blade 22in	1	
---	---------	--	----------------------	---	--

*Detail Description: R&R Reel blades are expertly crafted from premium high carbon-boron alloy steel, heat-treated to perfectly complement both R&R and OEM bedknives. Each reel undergoes precision cylindrical grinding on bearing surfaces, followed by relief grinding for optimal performance. Advanced computer balancing ensures extended reel and bearing life. Backed by our lifetime guarantee against defects in materials and craftsmanship under normal use, R&R Reels deliver unmatched durability and cutting precision you can trust.:*

## R&R Bedknives, Lifetime Guaranteed

2	RET17532	ET11066, ET17532	Bedknife - Fairway .189 Min	1	
---	----------	---------------------	-----------------------------	---	--

*Detail Description: R&R Bedknives are manufactured from high carbon-boron alloy steel and then hardened to RC46-49 to match the temper of our reel blades and original equipment reels. Bedknives are surface ground on the top and front edge and straightened three times before being packaged with oil for rust prevention. All R&R Bedknives now have an increased front edge grind for added life. All R&R Bedknives are guaranteed against defects in material and workmanship under normal use for the life of the part.:*

2	RMT7351	ET17489, MT7351, UC19154, UC28163	Bedknife - 22in Lo-Cut .079 Min. HOC	1	
---	---------	--	---	---	--

*Detail Description: R&R Bedknives are manufactured from high carbon-boron alloy steel and then hardened to RC46-49 to match the temper of our reel blades and original equipment reels. Bedknives are surface ground on the top and front edge and straightened three times before being packaged with oil for rust prevention. All R&R Bedknives now have an increased front edge grind for added life. All R&R Bedknives are guaranteed against defects in material and workmanship under normal use for the life of the part.:*

All original equipment manufacturers names and part numbers are used for identification purposes only, and we are in no way implying that our products are original equipment parts. Prices subject to change without notice.



# Replaces John Deere 220A Walk-Behind Greens Mower Parts

Cutting Unit  
Reel & Bedknife



Item No	R&R Part No.	OEM Part No.	Description	Qty Req	Order Quantity
2	RET17533	ET14402, ET17533, ET17767, MT4869, MT7351, UC18873	Bedknife - 22in Standard- .126 Min. HOC	1	

*Detail Description: R&R Bedknives are manufactured from high carbon-boron alloy steel and then hardened to RC46-49 to match the temper of our reel blades and original equipment reels. Bedknives are surface ground on the top and front edge and straightened three times before being packaged with oil for rust prevention. All R&R Bedknives now have an increased front edge grind for added life. All R&R Bedknives are guaranteed against defects in material and workmanship under normal use for the life of the part.:*

2	RMT4846	MT4846, MT4906, UC18877	Bedknife - Tournament	1	
---	---------	-------------------------------	-----------------------	---	--

*Detail Description: R&R Bedknives are manufactured from high carbon-boron alloy steel and then hardened to RC46-49 to match the temper of our reel blades and original equipment reels. Bedknives are surface ground on the top and front edge and straightened three times before being packaged with oil for rust prevention. All R&R Bedknives now have an increased front edge grind for added life. All R&R Bedknives are guaranteed against defects in material and workmanship under normal use for the life of the part.:*

2	RET17534	ET17534	Bedknife - 22in Tounament- .098 Min HOC	1	
---	----------	---------	---	---	--

*Detail Description: R&R Bedknives are manufactured from high carbon-boron alloy steel and then hardened to RC46-49 to match the temper of our reel blades and original equipment reels. Bedknives are surface ground on the top and front edge and straightened three times before being packaged with oil for rust prevention. All R&R Bedknives now have an increased front edge grind for added life. All R&R Bedknives are guaranteed against defects in material and workmanship under normal use for the life of the part.:*

## R&R Razor Tool Steel Bedknives, Lifetime Guaranteed

2	R130115		Bedknife - Razor Tool Steel - 22 Micro Cut	1	
---	---------	--	--	---	--

All original equipment manufacturers names and part numbers are used for identification purposes only, and we are in no way implying that our products are original equipment parts. Prices subject to change without notice.



# Replaces John Deere 220A Walk-Behind Greens Mower Parts

Cutting Unit  
Reel & Bedknife



Item No	R&R Part No.	OEM Part No.	Description	Qty Req	Order Quantity
---------	--------------	--------------	-------------	---------	----------------

*Detail Description: R&R Razor bedknives are manufactured from premium alloy tool steel steel and then hardened to RC48-51 to match the temper of our Razor reel blades and original equipment premium series reels. Bedknives are surface ground on the top and front edge and specially packaged for rust prevention. All R&R Bedknives now have an increased front edge grind for added life. All R&R Bedknives are guaranteed against defects in material and workmanship under normal use for the life of the part. You can expect up to double the life over standard bedknives.:*

2	<b>R130116</b>	MT4846, UC18877	Bedknife - Razor Tool Steel - 22 Tournament Cut	1	
---	----------------	--------------------	--	---	--

*Detail Description: R&R Razor bedknives are manufactured from premium alloy tool steel steel and then hardened to RC48-51 to match the temper of our Razor reel blades and original equipment premium series reels. Bedknives are surface ground on the top and front edge and specially packaged for rust prevention. All R&R Bedknives now have an increased front edge grind for added life. All R&R Bedknives are guaranteed against defects in material and workmanship under normal use for the life of the part. You can expect up to double the life over standard bedknives.:*

## Vertical Reel to fit 220 & 220A

5	<b>R130141</b>		Shaft - V-Cut	1	
6	<b>R101160</b>		Verti-Cut Blade - Fits 22 Gm	73	
7	<b>R352221</b>		Spacer - Nylon V-Cut Shaft	74	
8	<b>R352437</b>		Nut - V-Cut Shaft	1	

## Overhaul Kits

10	<b>R30067</b>		Filter Kit - 400 Hour Maintenance	1	
----	---------------	--	--------------------------------------	---	--

*Detail Description: Includes: 1 ea: RAK11013-2132 Air Filter, RAK11013-2133 Air Filter & RN7734 NGK Spark Plug:*

## Service Tools

15	<b>R101278T</b>		Bedknife Screw Driver Tool	1	
----	-----------------	--	----------------------------	---	--

*Tech Note: Easily install and remove bed knife screws with the help of a ratchet. Tool manufactured with hardened alloy steel.:*

All original equipment manufacturers names and part numbers are used for identification purposes only, and we are in no way implying that our products are original equipment parts. Prices subject to change without notice.



# Replaces John Deere 220A Walk-Behind Greens Mower Parts

Cutting Unit  
Reel & Bedknife



Item No	R&R Part No.	OEM Part No.	Description	Qty Req	Order Quantity
---------	--------------	--------------	-------------	---------	----------------

*Detail Description: Easily install and remove bed knife screws with the help of a ratchet. Tool manufactured with hardened alloy steel.:*

16	<b>R184</b>		Masters Gauge - Digital - Inches/Metric	1	
----	-------------	--	---	---	--

*Detail Description: Accurately measures desired height of cut. Easy to read digital indicator. Displays measurements in decimals and fractions, in English and Metric. 18" length.:*

16	<b>R175</b>		Masters Gauge - Inches	1	
----	-------------	--	------------------------	---	--

*Detail Description: Dial indicator accurately measures desired height of cut. Easy to use. Place the bar on front and rear rollers then push the measuring rod until it touches the bedknife edge. Hard anodized aluminum. Fits all greensmowers. Easy to read dial indicator. Displays measurements in .001" increments. 18" length.:*

17	<b>RP508</b>		Turf Evaluation and Height of Cut Prism Tool	1	
----	--------------	--	--	---	--

*Detail Description: Measure actual turfgrass height of cut, as well as, smoothness and quality of cut, on your greens to 100th of an inch. This impressive Height of Cut Prism Gauge is designed with a solid glass prism in a stainless steel frame. Graduated lines show 1/8th, 1/10th and 1/16th (.002 lines) and 1 mm intervals with grass measurements up to 1-5/8 inches or 40 mm. tall. Complete with protective case. Measures inches and metric.:*

## Other Parts Available

20	<b>R40M7080</b>	40M7080, ET11059	Ring - Snap	1	
21	<b>RET11053</b>	ET11053	Spring - Reel	1	
22	<b>RET11068</b>	ET11068	Handle - Adjusting RH	1	
22	<b>RET11069</b>	ET11069	Handle - Adjusting LH	1	
23	<b>RET11070</b>	ET11070	Spring - Bed Bar	2	
24	<b>RET11372</b>	ET11372	Bolt - Adjusting Bed Bar	2	
25	<b>R471219</b>	471219, 471231, JD7759, JD7798	Zerk - Grease	2	

All original equipment manufacturers names and part numbers are used for identification purposes only, and we are in no way implying that our products are original equipment parts. Prices subject to change without notice.



# Replaces John Deere 220A Walk-Behind Greens Mower Parts

Cutting Unit  
Reel & Bedknife



Item No	R&R Part No.	OEM Part No.	Description	Qty Req	Order Quantity
26	<b>RMT1087</b>	MT1087	Knob - Adjusting Roller	2	
27	<b>RMT1088</b>	MT1088	Stud - Roller Adj.	2	
28	<b>R14M7151</b>	14M7151	Nut - Jam Roller Adj	6	
29	<b>R101278</b>	21M7194	Screw - Bedknife	13	
30	<b>R500610</b>	AMT1108	Tapered Bearing Set - Cup and Cone	2	
<i>Detail Description: Includes:RAMT1108 &amp; RMT2108:</i>					
31	<b>RM44162</b>	M44162	O-Ring - Reel	1	
32	<b>R49M7049</b>	49M7049	Key - 5mm x 22mm	1	
33	<b>RMT1160</b>	MT1160	Seal - Reel	2	
34	<b>RMT2108</b>	MT2108	Tapered Bearing Cup	2	
35	<b>RAMT1108</b>	AMT1108	Tapered Bearing Cone	2	
36	<b>RET10210</b>	ET10210	Grass Basket	1	
<i>Detail Description: &lt;BR&gt;Please note: Due to excessive air freight charges, this item will be shipped ground freight.:</i>					
37	<b>RET11112</b>	ET11112	Bracket - RH	1	
38	<b>RET11113</b>	ET11113	Bracket - LH	1	
39	<b>R21M7326</b>	21M7326	Screw - M6 x 20mm	4	
40	<b>RE68605</b>	E68605	Locknut - 6mm	4	
41	<b>R24M7139</b>	24M7139	Washer - Flat 6mm	4	
42	<b>RAMT1418</b>	AMT1418, AMT734	Chain	1	
42	<b>RAMT1419</b>	AMT1419, ET11115	Chain	2	

All original equipment manufacturers names and part numbers are used for identification purposes only, and we are in no way implying that our products are original equipment parts. Prices subject to change without notice.





# Replaces John Deere 220A Walk-Behind Greens Mower Parts

Cutting Unit  
Reel & Bedknife



Item No	R&R Part No.	OEM Part No.	Description	Qty Req	Order Quantity
42	RET11148	ET11148	Chain - Differential	1	
43	RET11043	ET11043	Gasket - V-Cut Housing	1	
44	RN7734	M123089, M802138	NGK Spark Plug - BPR5ES	1	
44	RN7131	M128206	NGK Spark Plug - BPR6ES	1	
45	R345050	AZ20217	Bearing	2	
46	RET10285	ET10285	Seal	2	
47	RET11081	ET11081	Spindle - Traction Roller	1	
48	RET11075	ET11075	Shaft - Rear Traction Roller	2	
50	RET11095	ET11095	Seal	2	
51	RA203604	ET11094	Bearing	2	
52	R40M1863	40M1863	Ring - Snap	2	
53	RA203603	JD8535	Bearing	2	
54	RAMT585	AMT585	Cable - Clutch	1	
55	RAMT586	AMT586	Control - Throttle	1	
56	RAMT592	AMT592	Cable - Brake	1	
57	RAMT1680	AMT1680	Control - Throttle	1	
58	RAK11013-2132	PT18389	Kawasaki Element-Air Filter	1	
58	RRF10182	PT18389, PT18390	SilverGuard Air Filter	1	
59	RAK11013-2133	PT18390	Kawasaki Pre Cleaner Foam - Air Filter	1	
59	RRF10410	AM123909, PT18389	SilverGuard Foam Filter	1	

All original equipment manufacturers names and part numbers are used for identification purposes only, and we are in no way implying that our products are original equipment parts. Prices subject to change without notice.



# Replaces John Deere 220A Walk-Behind Greens Mower Parts

Cutting Unit  
Reel & Bedknife



Item No	R&R Part No.	OEM Part No.	Description	Qty Req	Order Quantity
60	RAM123909	AM123909	Filter - Air with Foam	1	
61	RET11073	ET11073	Seal - Reel Outer	1	
62	RAMT1306	AMT1306	Belt - Matched Set/2	1	
63	RET14707	ET14707	Verti-Cut Blade - .025 x 2.375	60	
63	RET14707C		Verti-Cut Blade - .025 x 2.375 Carbide Tipped	60	
64	RMT5244	MT5244	Bracket - Roller LH	1	
65	RMT5245	MT5245	Bracket - Roller RH	1	
66	R19M7881	19M7881	Bolt - Hex HD M8-1.25 x 20	2	
67	RA50744	A50744	Screw - 8mm-1.25 x 25 Sq HD	2	
68	RET11356	ET11356	Nut - Adjusting	2	
69	R03M7186	03M7186	Bolt - Carriage 8-1.25 x 30mm	2	
70	R24M7036	24M7036	Washer - Flat 8mm Zinc	2	
71	R12M7065	12M7065	Washer - Lock 8mm Zinc	2	
72	RP44946	P44946	Bushing - Bronze	2	
73	RET11371	ET11371	Screw - Special	2	
74	R302-5	JD7797, JD7842, JD7844	Fitting - Grease	4	
75	R14M7306	14M7306	Nut - M20-1.5	1	
76	RET11367	ET11367	Cap Screw - Special	1	
77	RET11464	ET11464	Spacer	1	
78	RET11368	ET11368	Spacer	1	

All original equipment manufacturers names and part numbers are used for identification purposes only, and we are in no way implying that our products are original equipment parts. Prices subject to change without notice.





# Replaces John Deere 220A Walk-Behind Greens Mower Parts

*Cutting Unit  
Reel & Bedknife*



Item No	R&R Part No.	OEM Part No.	Description	Qty Req	Order Quantity
79	<b>RN198341</b>	N198341	Nut - Nyloc 7/8-14	1	
80	<b>RET14917</b>	ET14917	Spacer	1	

All original equipment manufacturers names and part numbers are used for identification purposes only, and we are in no way implying that our products are original equipment parts. Prices subject to change without notice.