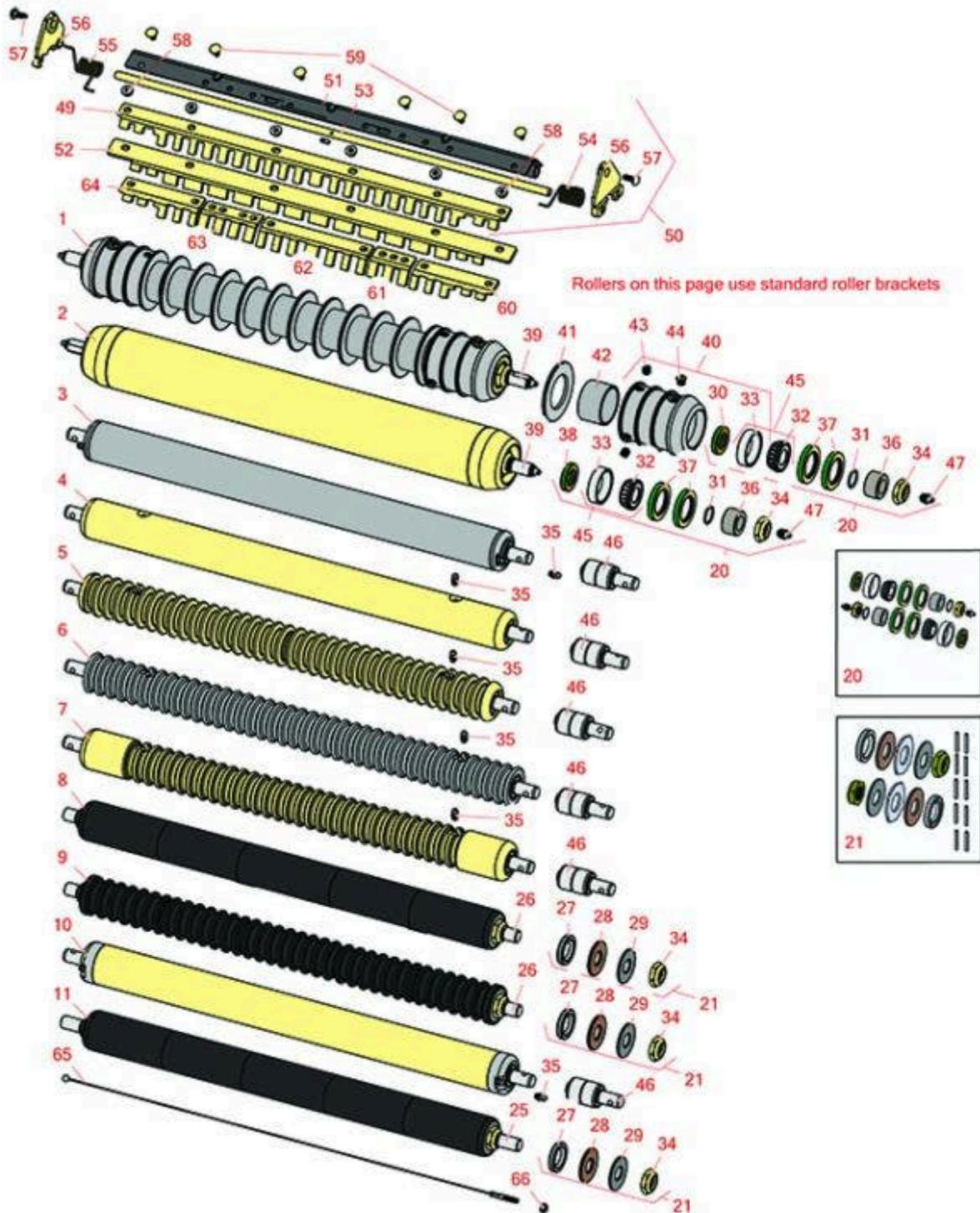




Replaces John Deere 2500 Riding Greens Mower Parts

Cutting Unit - Serial up to 030000
Rollers



All original equipment manufacturers names and part numbers are used for identification purposes only, and we are in no way implying that our products are original equipment parts. Prices subject to change without notice.



Replaces John Deere 2500 Riding Greens Mower Parts

Cutting Unit - Serial up to 030000
Rollers



Item No	R&R Part No.	OEM Part No.	Description	Qty Req	Order Quantity
1	R500512	AMT2966, BM25317	Roller - Grooved Repairable Steel	1	
<i>Tech Note: Constructed with a through shaft and greasable ball bearings. This roller can be repaired by unscrewing the ends and replacing the series of washers and spacers.:</i>					
2	RAET11263	AET11263, AMT2967	Roller - Smooth Tubular Steel	1	
<i>Tech Note: Constructed with a through shaft, this heavy duty roller uses greasable tapered bearings for extended life.:</i>					
3	RAET10111	AET10111, AMT2876	Roller - Smooth Tubular Steel	1	
<i>Tech Note: This tubular steel roller uses greasable "water-pump" style bearings.:</i>					
4	RAMT1442	AMT1442, AMT2878	Roller - Smooth Solid Steel	1	
<i>Tech Note: Machined from solid steel, this heavy weight roller uses greasable "water-pump" style bearings.:</i>					
5	RAET10954	AET10954, AMT2875, AMT2879	Roller - Grooved Machined Solid Steel	1	
<i>Tech Note: Machined from solid steel, this heavy weight roller uses greasable "water-pump" style bearings.:</i>					
6	RAMT1061	AET10557, AMT1061, AMT2877	Roller - Grooved Machined Solid Steel	1	
<i>Tech Note: Machined from solid steel, this heavy weight roller uses greasable "water-pump" style bearings.:</i>					
7	RAMT1443	AMT1443, AMT2879	Roller - Grooved Machined Solid Steel	1	
<i>Tech Note: Machined from solid steel, this heavy weight roller uses greasable "water-pump" style bearings. Extended length body.:</i>					

All original equipment manufacturers names and part numbers are used for identification purposes only, and we are in no way implying that our products are original equipment parts. Prices subject to change without notice.



Replaces John Deere 2500 Riding Greens Mower Parts

Cutting Unit - Serial up to 030000
Rollers



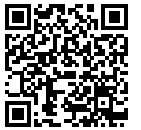
Item No	R&R Part No.	OEM Part No.	Description	Qty Req	Order Quantity
8	R120255		Roller - Smooth UHMW Polyethylene	1	
<i>Tech Note: Machined from solid UHMW, this low maintenance roller uses a 1" solid stainless steel shaft and requires no grease. UHMW material prevents build-up of debris.:</i>					
9	R120250		Roller - Grooved UHMW Polyethylene	1	
<i>Tech Note: Machined from solid UHMW, this low maintenance roller rotates around a 1" solid stainless steel shaft and requires no bearings or grease. Patented groove design and smooth UHMW material prevents build-up of debris.:</i>					
R&R Rear Rollers					
10	RAMT1060	AMT1060	Roller - Smooth Tubular Steel	1	
<i>Tech Note: This tubular steel roller uses greasable "water-pump" style bearings.:</i>					
11	R120260		Roller - Smooth UHMW Polyethylene	1	
<i>Tech Note: Machined from solid UHMW, this low maintenance roller uses a 1" solid stainless steel shaft and requires no grease. UHMW material prevents build-up of debris.:</i>					
Overhaul Kit					
20	RAET10632	AET10632	Overhaul Kit - Roller	1	
<i>Tech Note: Includes 4 ea: RET15755 Seal; 2 ea: R237-54 O-Ring, R253-122 Seal, R254-78 Bearing, R254-79 Cup, R3296-15 Locknut, R471219 Grease Zerk, RET15726 Sleeve, RET15756 Seal:</i>					
21	R101395		Overhaul Kit - UHMW Roller	1	
<i>Tech Note: Fits all R&R 2" Dia. Black UHMW Polyethylene Rollers. Includes 10 ea.: R150322 Roll Pins; 2 ea.: R3296-15 Locknuts, R150347T Teflon Seals, R150333 Thrust Washers, & R150334A Bronze Thrust Washers:</i>					
Other Parts Available					
25	R120261		Shaft - 1 SS Rear Roller	1	
26	R120251		Shaft - 1 SS Front Roller	1	

All original equipment manufacturers names and part numbers are used for identification purposes only, and we are in no way implying that our products are original equipment parts. Prices subject to change without notice.



Replaces John Deere 2500 Riding Greens Mower Parts

Cutting Unit - Serial up to 030000
Rollers



Item No	R&R Part No.	OEM Part No.	Description	Qty Req	Order Quantity
27	R150347T		Seal - Nonstick Lip	2	
28	R150334A		Washer - Thrust SAE660 Bronze	2	
29	R150333		Washer - Flat Keyed Outer SS	2	
30	R253-122	253-122	Seal	2	
31	R237-54	U46731, U6731	O-Ring - Small	2	
32	R254-78	JD8188	Tapered Bearing Cone	2	
33	R254-79	JD8226	Cup - Bearing	2	
<i>Tech Note: Use R254-79M installation mandrel to properly install race.:</i>					
34	R3296-15	N101345	Locknut - 3/4-16 Nylon Jam	2	
35	R302-5	JD7797, JD7842, JD7844	Fitting - Grease	2	
36	RET15726	ET15726, RET15726	Sleeve - Wear Hardened	2	
37	RET15755	ET15755	Seal - Oil	4	
38	RET15756	ET15756, MT1739, MT739	Seal	2	
39	RET17515	ET17515	Shaft - Roller	1	
40	R500511		Roller End - Threaded 3	2	
41	R150673		Washer - 3 Repairable Roller	11	
42	R150676		Spacer - 2-3/4 Dia x 1-1/4 L	10	
43	R150691		Screw - Set Nyloc 3/8-16 x 3/8	4	
44	R170714	E14814	Fitting - Pressure Relief	2	

All original equipment manufacturers names and part numbers are used for identification purposes only, and we are in no way implying that our products are original equipment parts. Prices subject to change without notice.



Replaces John Deere 2500 Riding Greens Mower Parts

Cutting Unit - Serial up to 030000
Rollers



Item No	R&R Part No.	OEM Part No.	Description	Qty Req	Order Quantity
45	R500534		Bearing - with Cup	2	
46	RAA35741	AA35741, AET10129, TCA22836	Bearing	2	
<i>Tech Note: 1/4" Side Hole:</i>					
47	R471219	471219, JD7759, JD7798	Zerk - Grease	2	
49	R500558		Scraper - Grooved Roller	1	
<i>Tech Note: 1 Piece Scraper fits OEM AET11262 & AMT2966 Grooved Roller:</i>					
50	R500559	BM18680, MT18680	Scraper Kit - Grooved Roller	1	
<i>Tech Note: Fits John Deere AET11262 & AMT2966 Grooved Roller Only:</i>					
50	R500573		Scraper Kit - SET/5	1	
<i>Tech Note: Fits R&R R500512 Roller Only & Incl R500572 Scraper:</i>					
51	R500571	MT2369	Bar - Scraper	1	
52	R500572		Scraper - Fits R500512 Only	1	
53	RET17757	ET11757, ET17757	Pin - Scraper	1	
54	RET17629	ET17629	Spring - Torsion LH	1	
55	RET17630	ET17630	Spring - Torsion RH	1	
56	RMT2407	MT2407	Bracket - Roller Scraper	2	
57	R03M7221	03M7221	Bolt - Carriage M6 x 16	5	
58	R14M7303	14M7303	Nut - 6mm x 1.0 Flanged	5	
59	R03M7251	03M7251	Bolt - Gr. Roller Scraper	5	

All original equipment manufacturers names and part numbers are used for identification purposes only, and we are in no way implying that our products are original equipment parts. Prices subject to change without notice.



Replaces John Deere 2500 Riding Greens Mower Parts

*Cutting Unit - Serial up to 030000
Rollers*



Item No	R&R Part No.	OEM Part No.	Description	Qty Req	Order Quantity
60	RMT5159	MT5159	Scraper - Fits J.D. LH End	1	
61	RMT2342	MT2342	Section - Grooved Scraper 3 Tooth	2	
62	RMT2340	MT2340	Scraper - Fits J.D. Center	1	
63	RMT2341	MT2341	Section - Grooved Scraper 4 Tooth	2	
64	RMT5158	MT5158	Scraper - Fits J.D. RH End	1	
65	RTCA19566	TCA19566	Cable - Smooth Roller Scraper	1	
66	RU45916	14M7298, U45916	Locknut - 10-24 ESNA	2	

All original equipment manufacturers names and part numbers are used for identification purposes only, and we are in no way implying that our products are original equipment parts. Prices subject to change without notice.