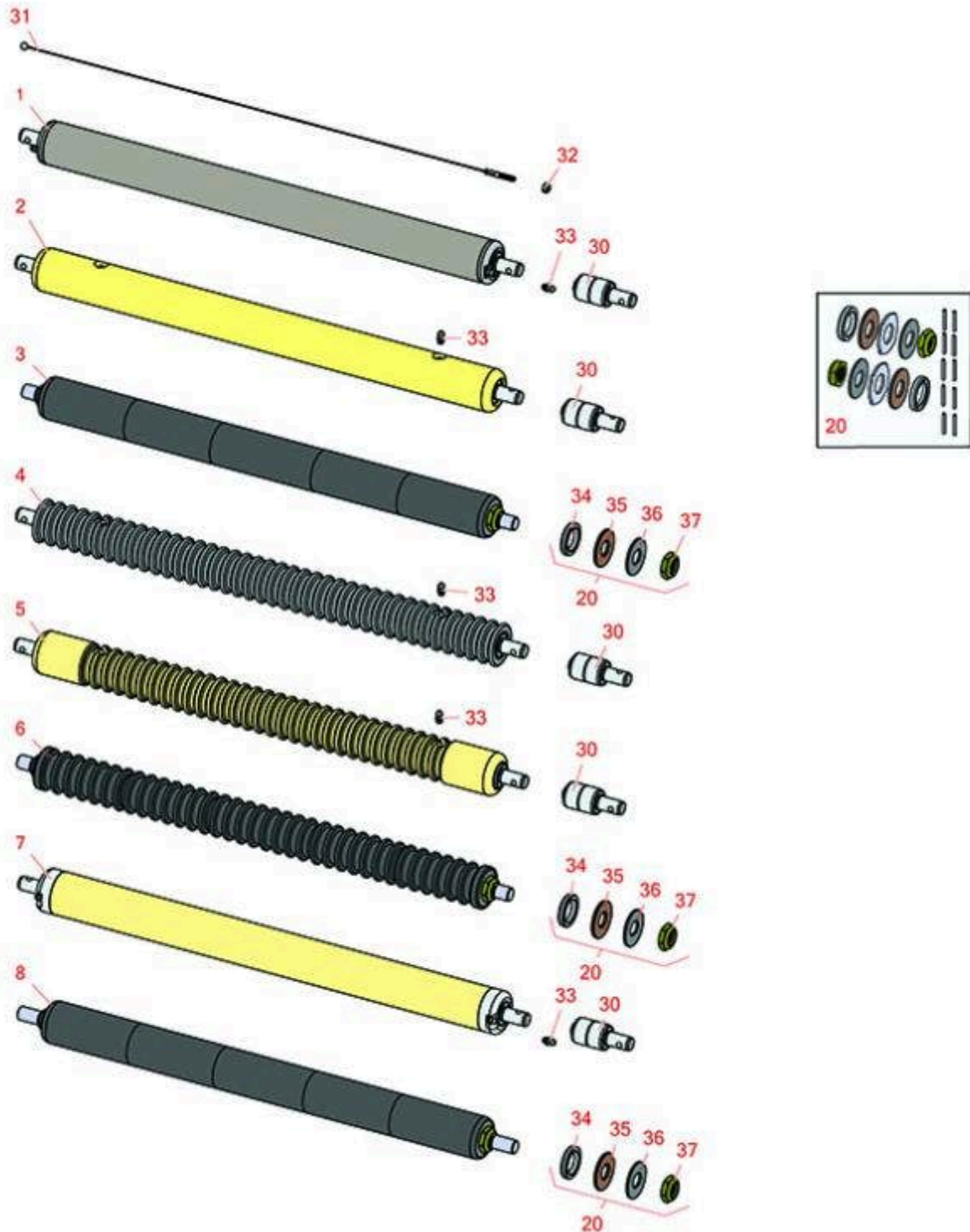




Replaces John Deere 2500B Riding Greens Mower Parts

Verti-Cut Unit - Serial up to 030000
Rollers



All original equipment manufacturers names and part numbers are used for identification purposes only, and we are in no way implying that our products are original equipment parts. Prices subject to change without notice.



Replaces John Deere 2500B Riding Greens Mower Parts

Verti-Cut Unit - Serial up to 030000
Rollers



| Item No | R&R Part No. | OEM Part No. | Description | Qty Req | Order Quantity |
|---------|--------------|--------------|-------------|---------|----------------|
|---------|--------------|--------------|-------------|---------|----------------|

R&R Front Rollers

| | | | | |
|---|------------------|----------------------|-------------------------------|---|
| 1 | RAET10111 | AET10111, AMT2876 | Roller - Smooth Tubular Steel | 0 |
|---|------------------|----------------------|-------------------------------|---|

Tech Note: This tubular steel roller uses greasable "water-pump" style bearings.:

| | | | | |
|---|-----------------|---------------------|-----------------------------|---|
| 2 | RAMT1442 | AMT1442, AMT2878 | Roller - Smooth Solid Steel | 0 |
|---|-----------------|---------------------|-----------------------------|---|

Tech Note: Machined from solid steel, this heavy weight roller uses greasable "water-pump" style bearings.:

| | | | | |
|---|----------------|--|-----------------------------------|---|
| 3 | R120255 | | Roller - Smooth UHMW Polyethylene | 0 |
|---|----------------|--|-----------------------------------|---|

Tech Note: Machined from solid UHMW, this low maintenance roller uses a 1" solid stainless steel shaft and requires no grease. UHMW material prevents build-up of debris.:

| | | | | |
|---|-----------------|----------------------------------|---------------------------------------|---|
| 4 | RAMT1061 | AET10557, AMT1061, AMT2877 | Roller - Grooved Machined Solid Steel | 0 |
|---|-----------------|----------------------------------|---------------------------------------|---|

Tech Note: Machined from solid steel, this heavy weight roller uses greasable "water-pump" style bearings.:

| | | | | |
|---|-----------------|---------------------|---------------------------------------|---|
| 5 | RAMT1443 | AMT1443, AMT2879 | Roller - Grooved Machined Solid Steel | 0 |
|---|-----------------|---------------------|---------------------------------------|---|

Tech Note: Machined from solid steel, this heavy weight roller uses greasable "water-pump" style bearings. Extended length body.:

| | | | | |
|---|----------------|--|------------------------------------|---|
| 6 | R120250 | | Roller - Grooved UHMW Polyethylene | 0 |
|---|----------------|--|------------------------------------|---|

Tech Note: Machined from solid UHMW, this low maintenance roller rotates around a 1" solid stainless steel shaft and requires no bearings or grease. Patented groove design and smooth UHMW material prevents build-up of debris.:

R&R Rear Rollers

| | | | | |
|---|-----------------|---------|-------------------------------|---|
| 7 | RAMT1060 | AMT1060 | Roller - Smooth Tubular Steel | 0 |
|---|-----------------|---------|-------------------------------|---|

Tech Note: This tubular steel roller uses greasable "water-pump" style bearings.:

All original equipment manufacturers names and part numbers are used for identification purposes only, and we are in no way implying that our products are original equipment parts. Prices subject to change without notice.



Replaces John Deere 2500B Riding Greens Mower Parts

Verti-Cut Unit - Serial up to 030000
Rollers



| Item No | R&R Part No. | OEM Part No. | Description | Qty Req | Order Quantity |
|---------|--------------|--------------|-----------------------------------|---------|----------------|
| 8 | R120260 | | Roller - Smooth UHMW Polyethylene | 0 | |

Tech Note: Machined from solid UHMW, this low maintenance roller uses a 1" solid stainless steel shaft and requires no grease. UHMW material prevents build-up of debris.:

Overhaul Kits

| | | | | | |
|----|---------|--|----------------------------|---|--|
| 20 | R101395 | | Overhaul Kit - UHMW Roller | 0 | |
|----|---------|--|----------------------------|---|--|

Tech Note: Fits all R&R 2" Dia. Black UHMW Polyethylene Rollers. Includes 10 ea.: R150322 Roll Pins; 2 ea.: R3296-15 Locknuts, R150347T Teflon Seals, R150333 Thrust Washers, & R150334A Bronze Thrust Washers:

Other Parts Available

| | | | | | |
|----|----------|-----------------------------------|---------|---|--|
| 30 | RAA35741 | AA35741, AET10129, TCA22836 | Bearing | 2 | |
|----|----------|-----------------------------------|---------|---|--|

Tech Note: 1/4" Side Hole:

| | | | | | |
|----|-----------|------------------------------|-------------------------------|---|--|
| 31 | RAET10139 | AET10139 | Cable - Roller Scraper | 1 | |
| 32 | RU45916 | 14M7298, U45916 | Locknut - 10-24 ESNA | 5 | |
| 33 | R302-5 | JD7797, JD7842, JD7844 | Fitting - Grease | 2 | |
| 34 | R150347T | | Seal - Nonstick Lip | 2 | |
| 35 | R150334A | | Washer - Thrust SAE660 Bronze | 2 | |
| 36 | R150333 | | Washer - Flat Keyed Outer SS | 2 | |
| 37 | R3296-15 | N101345 | Locknut - 3/4-16 Nylon Jam | 2 | |

All original equipment manufacturers names and part numbers are used for identification purposes only, and we are in no way implying that our products are original equipment parts. Prices subject to change without notice.