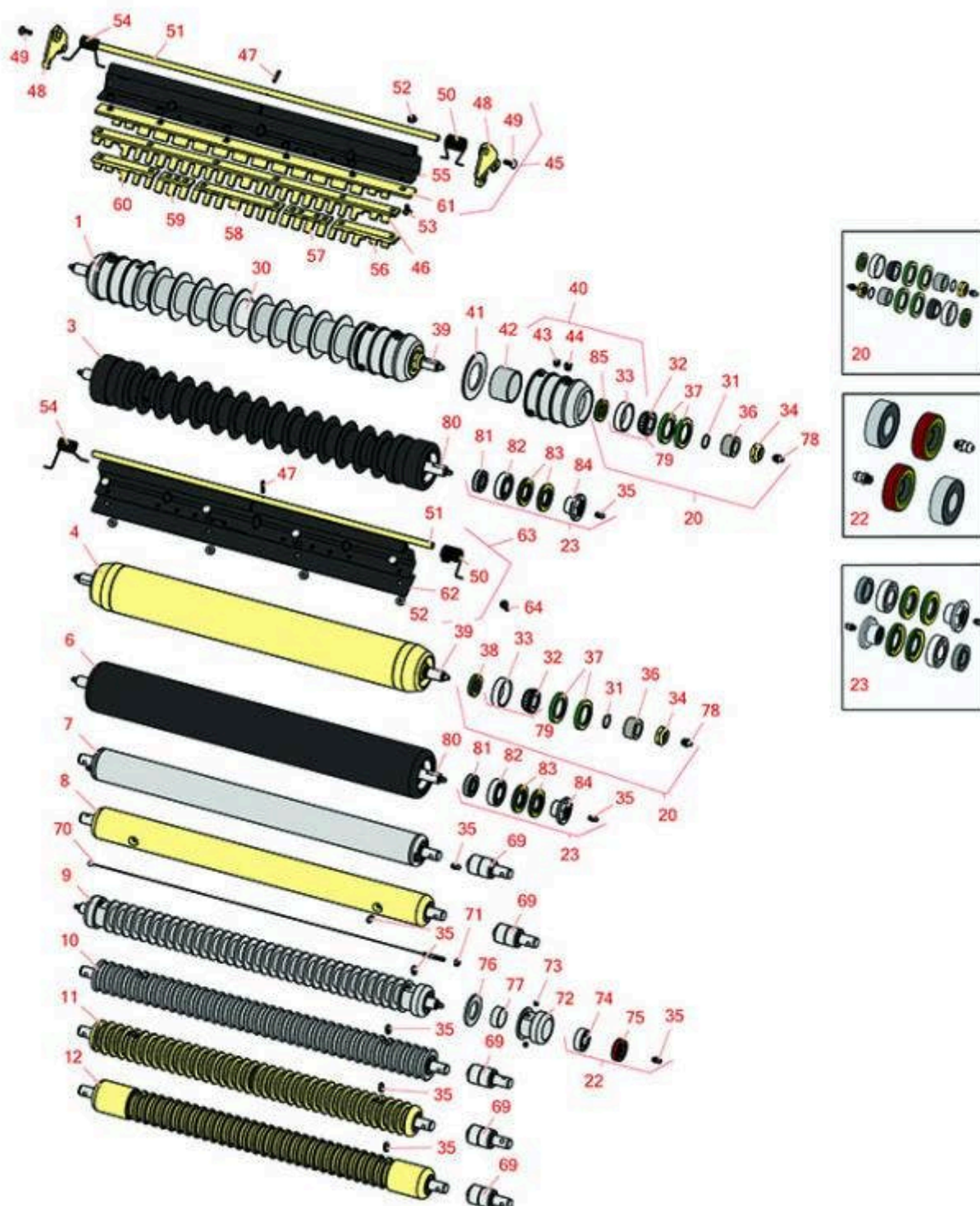




# Replaces John Deere 3235A Reel Mower

## Parts

Heavy Cutting Unit  
Front Rollers



All original equipment manufacturers names and part numbers are used for identification purposes only, and we are in no way implying that our products are original equipment parts. Prices subject to change without notice.



# Replaces John Deere 3235A Reel Mower Parts

Heavy Cutting Unit  
Front Rollers



Item No	R&R Part No.	OEM Part No.	Description	Qty Req	Order Quantity
---------	--------------	--------------	-------------	---------	----------------

## R&R Front Rollers

1	<b>R500512</b>	AMT2966, BM25317	Roller - Grooved Repairable Steel	0
---	----------------	---------------------	-----------------------------------	---

*Detail Description: Constructed with a through shaft and greasable ball bearings. This roller can be repaired by unscrewing the ends and replacing the series of washers and spacers.:*

3	<b>R1203820</b>	1203752	Roller - Fusion Grooved UHMW Polyethylene	0
---	-----------------	---------	---	---

*Detail Description: Fusion Rollers combine the best features of our UHMW plastic rollers with a heavy-duty internal bearing system. Machined from solid UHMW plastic that prevents build-up of debris. This roller has a patented deep groove design and turns on precision stainless ball bearings and double seals for added life:*

4	<b>RAET11263</b>	AET11263, AMT2967	Roller - Smooth Tubular Steel	0
---	------------------	----------------------	-------------------------------	---

*Detail Description: Constructed with a through shaft, this heavy duty roller uses greasable tapered bearings for extended life.:*

6	<b>R1203825</b>		Roller - Fusion Smooth UHMW Polyethylene	0
---	-----------------	--	--	---

*Detail Description: Fusion Rollers combine the best features of our UHMW plastic rollers with a heavy-duty internal bearing system. Machined from solid UHMW plastic that prevents build-up of debris. This roller turns on precision stainless ball bearings and double seals for added life.:*

7	<b>RAET10111</b>	AET10111, AMT2876	Roller - Smooth Tubular Steel	0
---	------------------	----------------------	-------------------------------	---

*Detail Description: This tubular steel roller uses greasable "water-pump" style bearings.:*

8	<b>RAMT1442</b>	AMT1442, AMT2878	Roller - Smooth Solid Steel	0
---	-----------------	---------------------	-----------------------------	---

*Detail Description: Machined from solid steel, this heavy weight roller uses greasable "water-pump" style bearings.:*

9	<b>R68527R</b>		Roller - Grooved Repairable Steel	0
---	----------------	--	-----------------------------------	---

*Detail Description: Constructed with a through shaft and greasable ball bearings, this roller can be repaired by unscrewing the ends and replacing the series of washers and spacers.:*

All original equipment manufacturers names and part numbers are used for identification purposes only, and we are in no way implying that our products are original equipment parts. Prices subject to change without notice.



# Replaces John Deere 3235A Reel Mower

## Parts

Heavy Cutting Unit  
Front Rollers



Item No	R&R Part No.	OEM Part No.	Description	Qty Req	Order Quantity
10	RAMT1061	AET10557, AMT1061, AMT2877	Roller - Grooved Machined Solid Steel	0	
<i>Detail Description: Machined from solid steel, this heavy weight roller uses greasable "water-pump" style bearings.:</i>					
11	RAET10954	AET10954, AMT2875, AMT2879	Roller - Grooved Machined Solid Steel	0	
<i>Detail Description: Machined from solid steel, this heavy weight roller uses greasable "water-pump" style bearings.:</i>					
12	RAMT1443	AMT1443, AMT2879	Roller - Grooved Machined Solid Steel	0	
<i>Detail Description: Machined from solid steel, this heavy weight roller uses greasable "water-pump" style bearings. Extended length body.:</i>					
<b>Overhaul Kits</b>					
20	RAET10632	AET10632	Overhaul Kit - Roller	0	
<i>Detail Description: Includes 4 ea: RET15755 Seal; 2 ea: R237-54 O-Ring, R253-122 Seal, R254-78 Bearing, R254-79 Cup, R3296-15 Locknut, R471219 Grease Zerk, RET15726 Sleeve, RET15756 Seal:</i>					
22	R100130		Overhaul Kit - Roller	0	
<i>Detail Description: Includes 2 ea.: R302-5 Grease Fittings, R303558 Bearings, &amp; R305115 Seals:</i>					
23	R114-5430		Overhaul Kit - Roller	0	
<i>Detail Description: Includes 4 ea.: R112-7494 Seals; 2 ea.: R302-5 Grease Zerks, R114-3717 Seals, R112-5290 Bearings &amp; R114-3745 Locknuts:</i>					
<b>Other Parts Available</b>					
30	R500513		Tube - Only Grooved Roller	1	
31	R237-54	U46731, U6731	O-Ring - Small	2	

All original equipment manufacturers names and part numbers are used for identification purposes only, and we are in no way implying that our products are original equipment parts. Prices subject to change without notice.



# Replaces John Deere 3235A Reel Mower Parts

Heavy Cutting Unit  
Front Rollers



Item No	R&R Part No.	OEM Part No.	Description	Qty Req	Order Quantity
32	<b>R254-78</b>	JD8188	Tapered Bearing Cone	2	
33	<b>R254-79</b>	JD8226	Cup - Bearing	2	
<i>Detail Description: Use R254-79M installation mandrel to properly install race.:</i>					
34	<b>R3296-15</b>	N101345	Locknut - 3/4-16 Nylon Jam	2	
35	<b>R302-5</b>	JD7797, JD7842, JD7844	Fitting - Grease	2	
36	<b>RET15726</b>	ET15726, RET15726	Sleeve - Wear Hardened	2	
37	<b>RET15755</b>	ET15755	Seal - Oil	4	
38	<b>RET15756</b>	ET15756, MT1739, MT739	Seal	2	
39	<b>RET17515</b>	ET17515	Shaft - Roller	1	
40	<b>R500511</b>		Roller End - Threaded 3	2	
41	<b>R150673</b>		Washer - 3 Repairable Roller	11	
42	<b>R150676</b>		Spacer - 2-3/4 Dia x 1-1/4 L	10	
43	<b>R150691</b>		Screw - Set Nyloc 3/8-16 x 3/8	4	
44	<b>R170714</b>	E14814	Fitting - Pressure Relief	2	
45	<b>R500559</b>	BM18680, MT18680	Scraper Kit - Grooved Roller	1	
<i>Detail Description: Fits John Deere AET11262 &amp; AMT2966 Grooved Roller Only:</i>					
45	<b>R500573</b>		Scraper Kit - SET/5	1	
<i>Detail Description: Fits R&amp;R R500512 Roller Only &amp; Incl R500572 Scraper:</i>					
46	<b>R500558</b>		Scraper - Grooved Roller	5	

All original equipment manufacturers names and part numbers are used for identification purposes only, and we are in no way implying that our products are original equipment parts. Prices subject to change without notice.



# Replaces John Deere 3235A Reel Mower Parts

Heavy Cutting Unit  
Front Rollers



Item No	R&R Part No.	OEM Part No.	Description	Qty Req	Order Quantity
---------	--------------	--------------	-------------	---------	----------------

*Tech Note: Fits OEM Roller Only:*

*Detail Description: 1 Piece Scraper fits OEM AET11262 & AMT2966 Grooved Roller:*

47	<b>R34M7010</b>	34M7010	Pin - Spring	5	
48	<b>RMT2407</b>	MT2407	Bracket - Roller Scraper	10	
49	<b>R03M7221</b>	03M7221	Bolt - Carriage M6 x 16	20	
50	<b>RET17629</b>	ET17629	Spring - Torsion LH	5	
51	<b>RET17757</b>	ET11757, ET17757	Pin - Scraper	5	
52	<b>R14M7303</b>	14M7303	Nut - 6mm x 1.0 Flanged	14	
53	<b>R03M7251</b>	03M7251	Bolt - Gr. Roller Scraper	30	
54	<b>RET17630</b>	ET17630	Spring - Torsion RH	5	
55	<b>R500571</b>	MT2369	Bar - Scraper	5	
56	<b>RMT5159</b>	MT5159	Scraper - Fits J.D. LH End	5	
57	<b>RMT2341</b>	MT2341	Section - Grooved Scraper 4 Tooth	5	
58	<b>RMT2340</b>	MT2340	Scraper - Fits J.D. Center	5	
59	<b>RMT2342</b>	MT2342	Section - Grooved Scraper 3 Tooth	5	
60	<b>RMT5158</b>	MT5158	Scraper - Fits J.D. RH End	5	
61	<b>R500572</b>		Scraper - Fits R500512 Only	5	
62	<b>RMT2595</b>	MT2595, MT2895	Scraper Blade - Solid Roller	1	
63	<b>RBM17684</b>	BM17684	Scraper Kit - Solid Roller SET/5	1	

*Detail Description: Includes 20 ea: R03M7221 Bolt, R14M7303 Nut; 5 ea: R34M7010 Pin, R500571 Scraper Bar, RET17629 LH Spring, RET17630 RH Spring, RET17757 Pin, RMT2595 Scraper Blade:*

All original equipment manufacturers names and part numbers are used for identification purposes only, and we are in no way implying that our products are original equipment parts. Prices subject to change without notice.



# Replaces John Deere 3235A Reel Mower Parts

Heavy Cutting Unit  
Front Rollers



Item No	R&R Part No.	OEM Part No.	Description	Qty Req	Order Quantity
64	R21M7246	21M7246	Screw	6	
69	RAA35741	AA35741, AET10129, TCA22836	Bearing	2	
<i>Detail Description: 1/4" Side Hole:</i>					
70	RAET10139	AET10139	Cable - Roller Scraper	1	
71	RU45916	14M7298, U45916	Locknut - 10-24 ESNA	2	
72	R150650		Roller End - 2 Repairable	2	
73	R150690		Screw - Set 1/4-20 x 1/4	4	
74	R303558	ET15220	Bearing - Roller	2	
75	R305115	ET15219	Seal - Roller	2	
76	R150652		Washer - 2 Roller	33	
77	R150651		Spacer - 2-3/8 Roller	34	
78	R471219	471219, 471231, JD7759, JD7798	Zerk - Grease	2	
79	R500534		Bearing - with Cup	2	
<i>Detail Description: Kit includes: 1 ea R254-78- Bearing Cone &amp; R254-79 Bearing Cone:</i>					
80	R1203821		Shaft - Fusion Roller	1	
81	R114-3717		Seal	2	
82	R112-5290		Bearing - Stainless	2	
83	R112-7494		Seal	4	
84	R114-3745		Locknut - Bearing - Stainless	2	

All original equipment manufacturers names and part numbers are used for identification purposes only, and we are in no way implying that our products are original equipment parts. Prices subject to change without notice.



# Replaces John Deere 3235A Reel Mower Parts

*Heavy Cutting Unit  
Front Rollers*



Item No	R&R Part No.	OEM Part No.	Description	Qty Req	Order Quantity
85	R253-122	253-122	Seal	2	

All original equipment manufacturers names and part numbers are used for identification purposes only, and we are in no way implying that our products are original equipment parts. Prices subject to change without notice.