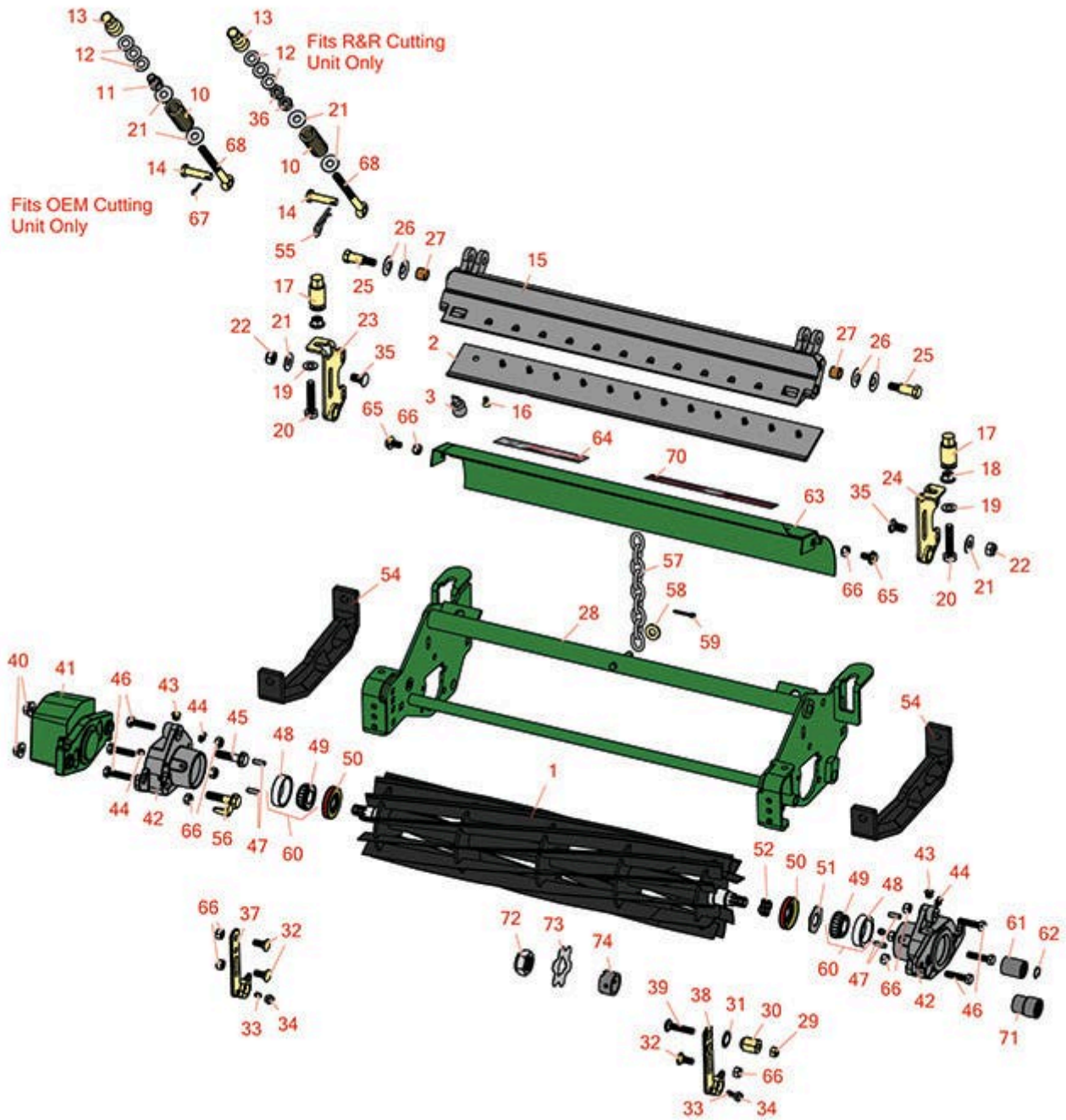




# Replaces John Deere 7500 Reel Mower Parts

Cutting Unit - Serial up to 020000  
Reel & Bedknife



All original equipment manufacturers names and part numbers are used for identification purposes only, and we are in no way implying that our products are original equipment parts. Prices subject to change without notice.



# Replaces John Deere 7500 Reel Mower Parts

Cutting Unit - Serial up to 020000  
Reel & Bedknife



| Item No | R&R Part No. | OEM Part No. | Description | Qty Req | Order Quantity |
|---------|--------------|--------------|-------------|---------|----------------|
|---------|--------------|--------------|-------------|---------|----------------|

## R&R Reels, Lifetime Guaranteed

|   |                  |                      |   |   |  |
|---|------------------|----------------------|---|---|--|
| 1 | <b>RAET11237</b> | AET11237,<br>AMT2883 | Reel - 7 Blade Heavy Duty - External Spline | 1 |  |
| 1 | <b>R101274</b>   | AMT2885,<br>AMT538   | Reel - 11 Blade - External Spline           | 1 |  |

## R&R Bedknives, Lifetime Guaranteed

|   |                 |   |  |   |  |
|---|-----------------|---|--|---|--|
| 2 | <b>RET17767</b> | ET17767,<br>UC23562   | Bedknife - High Cut 5/16                 | 1 |  |
| 2 | <b>RET17532</b> | ET11066,<br>ET17532   | Bedknife - Fairway .189 Min              | 1 |  |
| 2 | <b>RET17533</b> | ET14402,<br>ET17533,<br>ET17767,<br>MT4869,<br>MT7351,<br>UC18873 | Bedknife - 22in Standard- .126 Min. HOC  | 1 |  |
| 2 | <b>RET17534</b> | ET17534   | Bedknife - 22in Tournament- .098 Min HOC | 1 |  |
| 2 | <b>RMT7351</b>  | ET17489,<br>MT7351,<br>UC19154,<br>UC28163                        | Bedknife - 22in Lo-Cut .079 Min. HOC     | 1 |  |

## R&R Razor Tool Steel Bedknives, Lifetime Guaranteed

|   |                |                    |   |   |  |
|---|----------------|--------------------|---|---|--|
| 2 | <b>R130130</b> |                    | Bedknife - Razor Tool Steel - 22 High Cut       | 1 |  |
| 2 | <b>R130116</b> | MT4846,<br>UC18877 | Bedknife - Razor Tool Steel - 22 Tournament Cut | 1 |  |

## Service Tools

|   |                 |  |                            |   |  |
|---|-----------------|--|----------------------------|---|--|
| 3 | <b>R101278T</b> |  | Bedknife Screw Driver Tool | 0 |  |
|---|-----------------|--|----------------------------|---|--|

*Tech Note: Easily install and remove bed knife screws with the help of a ratchet. Tool manufactured with hardened alloy steel.:*

All original equipment manufacturers names and part numbers are used for identification purposes only, and we are in no way implying that our products are original equipment parts. Prices subject to change without notice.



# Replaces John Deere 7500 Reel Mower Parts

Cutting Unit - Serial up to 020000  
Reel & Bedknife



| Item No                      | R&R Part No.    | OEM Part No. | Description                       | Qty Req | Order Quantity |
|------------------------------|-----------------|--------------|-----------------------------------|---------|----------------|
| <b>Other Parts Available</b> |                 |              |                                   |         |                |
| 10                           | <b>RET11070</b> | ET11070      | Spring - Bed Bar                  | 2       |                |
| 11                           | <b>RMT6486</b>  | MT6486       | Nut - Bed Bar Adjusting           | 2       |                |
| 12                           | <b>RET16679</b> | ET16679      | Washer - Spring                   | 6       |                |
| 13                           | <b>RMT6990</b>  | MT6990       | Nut - Adjusting                   | 2       |                |
| 14                           | <b>R45M7060</b> | 45M7060      | Pin                               | 2       |                |
| 15                           | <b>RMT2694</b>  | MT2694       | Bed Bar                           | 1       |                |
| 16                           | <b>R101278</b>  | 21M7194      | Screw - Bedknife                  | 13      |                |
| 17                           | <b>RMT6483</b>  | MT6483       | Nut - Adjusting Rear Roller       | 2       |                |
| 18                           | <b>R14M7296</b> | 14M7296      | Nut - 10mm x 1.5 Flanged          | 2       |                |
| 19                           | <b>R24M7096</b> | 24M7096      | Washer                            | 2       |                |
| 20                           | <b>R19M7383</b> | 19M7383      | Bolt - Rear Roller Adj 55 mm Long | 2       |                |
| 20                           | <b>R19M7385</b> | 19M7385      | Bolt - Rear Roller Adj 70mm Long  | 2       |                |
| 21                           | <b>RP250-52</b> | T105740      | Washer - 3/8 USS Flat Zinc        | 2       |                |
| 22                           | <b>R14M7517</b> | 14M7517      | Locknut - 10mm x 1.5 ESNA         | 2       |                |
| 23                           | <b>RAMT5112</b> | AMT5112      | Bracket - Roller RH Rear          | 1       |                |
| 24                           | <b>RAMT5113</b> | AMT5113      | Bracket - Roller LH Rear          | 1       |                |
| 25                           | <b>RMT3016</b>  | MT3016       | Bolt - Bed Bar                    | 2       |                |
| 26                           | <b>RN168012</b> | N168012      | Washer - Spring                   | 4       |                |
| 27                           | <b>RB30499</b>  | B30499       | Bushing - Bed Bar                 | 2       |                |
| 28                           | <b>R130121</b>  | AMT1415      | Frame - Cutting Unit              | 1       |                |
| 29                           | <b>R14M7166</b> | 14M7166      | Locknut - 8mm x 1.25 ESNA         | 1       |                |

All original equipment manufacturers names and part numbers are used for identification purposes only, and we are in no way implying that our products are original equipment parts. Prices subject to change without notice.



# Replaces John Deere 7500 Reel Mower Parts

Cutting Unit - Serial up to 020000  
Reel & Bedknife



| Item No                          | R&R Part No.    | OEM Part No.                 | Description                       | Qty Req | Order Quantity |
|----------------------------------|-----------------|------------------------------|-----------------------------------|---------|----------------|
| 30                               | <b>RMT3881</b>  | MT3881                       | Nut - Eccentric Front Roller Bkt  | 1       |                |
| 31                               | <b>R12M7052</b> | 12M7052                      | Washer - Rib Lock                 | 1       |                |
| 32                               | <b>R03M7184</b> | 03M7184                      | Bolt - Carriage M8                | 3       |                |
| 33                               | <b>R22H1004</b> | 19H3003                      | Screw - Set 1/4-28 x 1/2          | 2       |                |
| 34                               | <b>R3219-1</b>  | 14H860                       | Nut - 1/4-28                      | 2       |                |
| 35                               | <b>R03M7191</b> | 03M7191                      | Bolt - Carriage M10 x 25          | 2       |                |
| 36                               | <b>R130123</b>  | 130123                       | Nut - Hex 10mm x 1.0              | 4       |                |
| 37                               | <b>RMT3015</b>  | MT3015                       | Bracket - RH - Extended           | 1       |                |
| 37                               | <b>RMT7259</b>  | MT7259                       | Bracket - RH                      | 1       |                |
| 38                               | <b>RMT3072</b>  | MT3072                       | Bracket - LH - Extended           | 1       |                |
| 38                               | <b>RMT7260</b>  | MT7260                       | Bracket - LH                      | 1       |                |
| 39                               | <b>R03M7188</b> | 03M7188                      | Bolt - Carriage M8 x 40           | 1       |                |
| 40                               | <b>RH135891</b> | H135891                      | Locknut - 10mm x 1.5 Flanged 10.9 | 2       |                |
| <i>Tech Note: High Strength:</i> |                 |                              |                                   |         |                |
| 41                               | <b>RMT6476</b>  | MT6476                       | Counterweight                     | 1       |                |
| 42                               | <b>RMT7294</b>  | MT2647,<br>MT7294            | Housing - Reel                    | 2       |                |
| 43                               | <b>R170714</b>  | E14814                       | Fitting - Pressure Relief         | 2       |                |
| 44                               | <b>R302-5</b>   | JD7797,<br>JD7842,<br>JD7844 | Fitting - Grease                  | 4       |                |
| 45                               | <b>R19M7804</b> | 19M7804                      | Bolt - Flanged Hex M10-1.5 x 40   | 2       |                |
| 46                               | <b>R19M8008</b> | 19M8008                      | Bolt - Hex HD M8-1.25 x 35        | 6       |                |

All original equipment manufacturers names and part numbers are used for identification purposes only, and we are in no way implying that our products are original equipment parts. Prices subject to change without notice.



# Replaces John Deere 7500 Reel Mower Parts

Cutting Unit - Serial up to 020000  
Reel & Bedknife



| Item No  | R&R Part No.     | OEM Part No.       | Description                 | Qty Req | Order Quantity |
|--|------------------|--------------------|-----------------------------|---------|----------------|
| 47   | <b>RR30587</b>   | 30587,<br>R30587   | Pin - Dowell 1/4 Dia. x .75 | 4       |                |
| 48   | <b>R254-79</b>   | JD8226             | Cup - Bearing               | 2       |                |
| <i>Tech Note: Use R254-79M installation mandrel to properly install race.:</i> |                  |                    |                             |         |                |
| 49   | <b>R254-78</b>   | JD8188             | Tapered Bearing Cone        | 2       |                |
| 50   | <b>RET14566</b>  | ET14566            | Seal - Reel                 | 2       |                |
| 51   | <b>RET16704</b>  | ET16704            | Retainer                    | 1       |                |
| 52   | <b>RET14592</b>  | ET14592            | Spring - Reel Bearing       | 1       |                |
| 54   | <b>RMT2527</b>   | MT2527             | Shoe - Skid                 | 2       |                |
| 55   | <b>R130122</b>   |                    | Clip - Hitch Pin            | 1       |                |
| 56   | <b>RAMT2261</b>  | AMT2261            | Kit - Bolt w/Clip           | 2       |                |
| 57   | <b>RAMT1479</b>  | AMT1479            | Chain - Link                | 1       |                |
| 58   | <b>R24H1682</b>  | 24H1682            | Washer - 13/32 x 7/8 x 1/8  | 1       |                |
| 59   | <b>R460028</b>   | 11M7059,<br>460028 | Pin - Cotter 1/8 x 1        | 1       |                |
| 60   | <b>R500534</b>   |                    | Bearing - with Cup          | 2       |                |
| 61   | <b>RTCA12581</b> | TCA12581           | Coupling - Reel 11 Tooth    | 1       |                |
| 62   | <b>RMT2745</b>   | MT2745             | Snap Ring                   | 1       |                |
| 63   | <b>RAMT2495</b>  | AMT2495,<br>AMT554 | Shield - Grass              | 1       |                |
| 64   | <b>R67-7960</b>  |                    | Decal - Warning             | 2       |                |
| 65   | <b>R19M7865</b>  | 19M7865            | Bolt - Hex Washer M8 x 16   | 2       |                |
| 66   | <b>RH137328</b>  | H137328            | Locknut                     | 12      |                |

All original equipment manufacturers names and part numbers are used for identification purposes only, and we are in no way implying that our products are original equipment parts. Prices subject to change without notice.



# Replaces John Deere 7500 Reel Mower Parts

*Cutting Unit - Serial up to 020000  
Reel & Bedknife*



| Item No | R&R Part No.    | OEM Part No. | Description                   | Qty Req | Order Quantity |
|---------|-----------------|--------------|-------------------------------|---------|----------------|
| 67      | <b>R11M7012</b> | 11M7012      | Pin - Cotter 1/8 x 5/8        | 2       |                |
| 68      | <b>RMT3074</b>  | MT3074       | Eyebolt - Bed Bar             | 2       |                |
| 70      | <b>RMT6517</b>  | MT6517       | Label - Warning               | 1       |                |
| 71      | <b>RMT7067</b>  | MT7067       | Coupling - Splined 9/11 Tooth | 1       |                |
| 72      | <b>RN198341</b> | N198341      | Nut - Nyloc 7/8-14            | 1       |                |
| 73      | <b>RMT2624</b>  | MT2624       | Knife - Greens Conditioner    | 38      |                |
| 74      | <b>RET14917</b> | ET14917      | Spacer                        | 1       |                |

All original equipment manufacturers names and part numbers are used for identification purposes only, and we are in no way implying that our products are original equipment parts. Prices subject to change without notice.