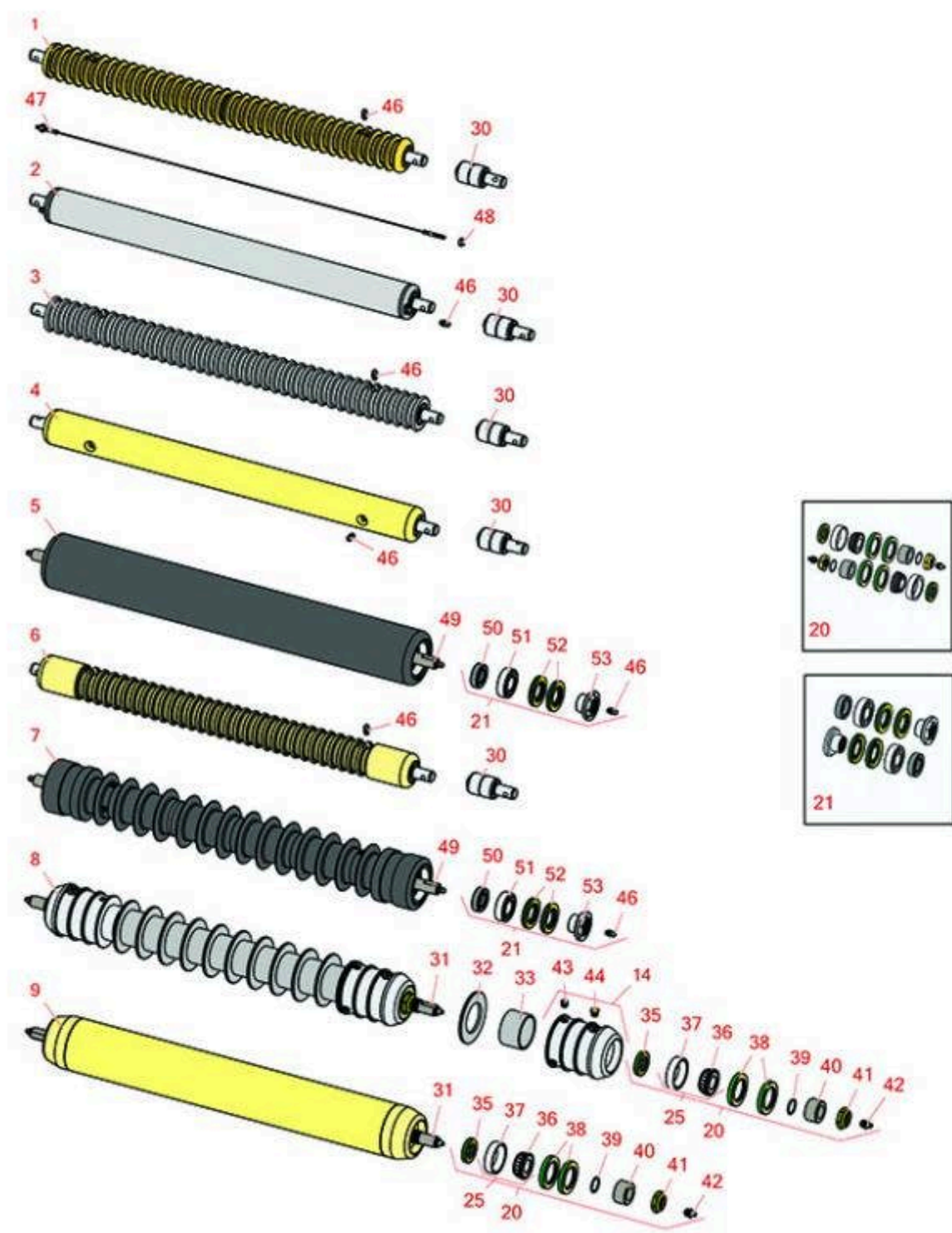
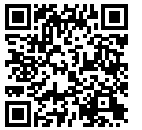




Replaces John Deere 7500 Reel Mower

Parts

Cutting Unit - Serial 020001 & Up
Rollers



All original equipment manufacturers names and part numbers are used for identification purposes only, and we are in no way implying that our products are original equipment parts. Prices subject to change without notice.



Replaces John Deere 7500 Reel Mower Parts

Cutting Unit - Serial 020001 & Up
Rollers



Item No	R&R Part No.	OEM Part No.	Description	Qty Req	Order Quantity
1	RAET10954	AET10954, AMT2875, AMT2879	Roller - Grooved Machined Solid Steel	0	
<i>Tech Note: Machined from solid steel, this heavy weight roller uses greasable "water-pump" style bearings.:</i>					
2	RAET10111	AET10111, AMT2876	Roller - Smooth Tubular Steel	0	
<i>Tech Note: This tubular steel roller uses greasable "water-pump" style bearings.:</i>					
3	RAMT1061	AET10557, AMT1061, AMT2877	Roller - Grooved Machined Solid Steel	0	
<i>Tech Note: Machined from solid steel, this heavy weight roller uses greasable "water-pump" style bearings.:</i>					
4	RAMT1442	AMT1442, AMT2878	Roller - Smooth Solid Steel	0	
<i>Tech Note: Machined from solid steel, this heavy weight roller uses greasable "water-pump" style bearings.:</i>					
5	R1203825		Roller - Fusion Smooth UHMW Polyethylene	0	
<i>Tech Note: Fusion Rollers combine the best features of our UHMW plastic rollers with a heavy-duty internal bearing system. Machined from solid UHMW plastic that prevents build-up of debris. This roller turns on precision stainless ball bear... <Click Part# for more>:</i>					
6	RAMT1443	AMT1443, AMT2879	Roller - Grooved Machined Solid Steel	0	
<i>Tech Note: Machined from solid steel, this heavy weight roller uses greasable "water-pump" style bearings. Extended length body.:</i>					
7	R1203820	1203752	Roller - Fusion Grooved UHMW Polyethylene	0	

All original equipment manufacturers names and part numbers are used for identification purposes only, and we are in no way implying that our products are original equipment parts. Prices subject to change without notice.



Replaces John Deere 7500 Reel Mower Parts

Cutting Unit - Serial 020001 & Up
Rollers



Item No	R&R Part No.	OEM Part No.	Description	Qty Req	Order Quantity
<i>Tech Note: Fusion Rollers combine the best features of our UHMW plastic rollers with a heavy-duty internal bearing system. Machined from solid UHMW plastic that prevents build-up of debris. This roller has a patented deep groove design and ... <Click Part# for more>:</i>					
8	R500512	AMT2966, BM25317	Roller - Grooved Repairable Steel	0	
<i>Tech Note: Constructed with a through shaft and greasable ball bearings. This roller can be repaired by unscrewing the ends and replacing the series of washers and spacers.:</i>					
9	RAET11263	AET11263, AMT2967	Roller - Smooth Tubular Steel	0	
<i>Tech Note: Constructed with a through shaft, this heavy duty roller uses greasable tapered bearings for extended life.:</i>					
Overhaul Kits					
20	RAET10632	AET10632	Overhaul Kit - Roller	0	
<i>Tech Note: Includes 4 ea: RET15755 Seal; 2 ea: R237-54 O-Ring, R253-122 Seal, R254-78 Bearing, R254-79 Cup, R3296-15 Locknut, R471219 Grease Zerk, RET15726 Sleeve, RET15756 Seal:</i>					
21	R114-5430		Overhaul Kit - Roller	0	
<i>Tech Note: Includes 4 ea.: R112-7494 Seals; 2 ea.: R302-5 Grease Zerks, R114-3717 Seals, R112-5290 Bearings & R114-3745 Locknuts:</i>					
Other Parts Available					
30	RAA35741	AA35741, AET10129, TCA22836	Bearing	2	
<i>Tech Note: 1/4" Side Hole:</i>					
31	RET17515	ET17515	Shaft - Roller	1	
32	R150673		Washer - 3 Repairable Roller	11	
33	R150676		Spacer - 2-3/4 Dia x 1-1/4 L	10	
34	R500511		Roller End - Threaded 3	2	

All original equipment manufacturers names and part numbers are used for identification purposes only, and we are in no way implying that our products are original equipment parts. Prices subject to change without notice.



Replaces John Deere 7500 Reel Mower Parts

Cutting Unit - Serial 020001 & Up
Rollers



Item No	R&R Part No.	OEM Part No.	Description	Qty Req	Order Quantity
35	RET15756	ET15756, MT1739, MT739	Seal	2	
36	R254-78	JD8188	Tapered Bearing Cone	2	
37	R254-79	JD8226	Cup - Bearing	2	
<i>Tech Note: Use R254-79M installation mandrel to properly install race.:</i>					
38	RET15755	ET15755	Seal - Oil	4	
39	R237-54	U46731, U6731	O-Ring - Small	2	
40	RET15726	ET15726, RET15726	Sleeve - Wear Hardened	2	
41	R3296-15	N101345	Locknut - 3/4-16 Nylon Jam	2	
42	R471219	471219, JD7759, JD7798	Zerk - Grease	2	
43	R150691		Screw - Set Nyloc 3/8-16 x 3/8	4	
44	R170714	E14814	Fitting - Pressure Relief	2	
45	R500534		Bearing - with Cup	2	
46	R302-5	JD7797, JD7842, JD7844	Fitting - Grease	2	
47	RTCA19566	TCA19566	Cable - Smooth Roller Scraper	1	
48	RU45916	14M7298, U45916	Locknut - 10-24 ESNA	2	
49	R1203821		Shaft - Fusion Roller	1	
50	R3010210		Seal - Roller	2	
51	R112-5290		Bearing - Stainless	1	

All original equipment manufacturers names and part numbers are used for identification purposes only, and we are in no way implying that our products are original equipment parts. Prices subject to change without notice.



Replaces John Deere 7500 Reel Mower Parts

*Cutting Unit - Serial 020001 & Up
Rollers*



Item No	R&R Part No.	OEM Part No.	Description	Qty Req	Order Quantity
52	R112-7494		Seal	4	
53	R114-3745		Locknut - Bearing - Stainless	2	

All original equipment manufacturers names and part numbers are used for identification purposes only, and we are in no way implying that our products are original equipment parts. Prices subject to change without notice.