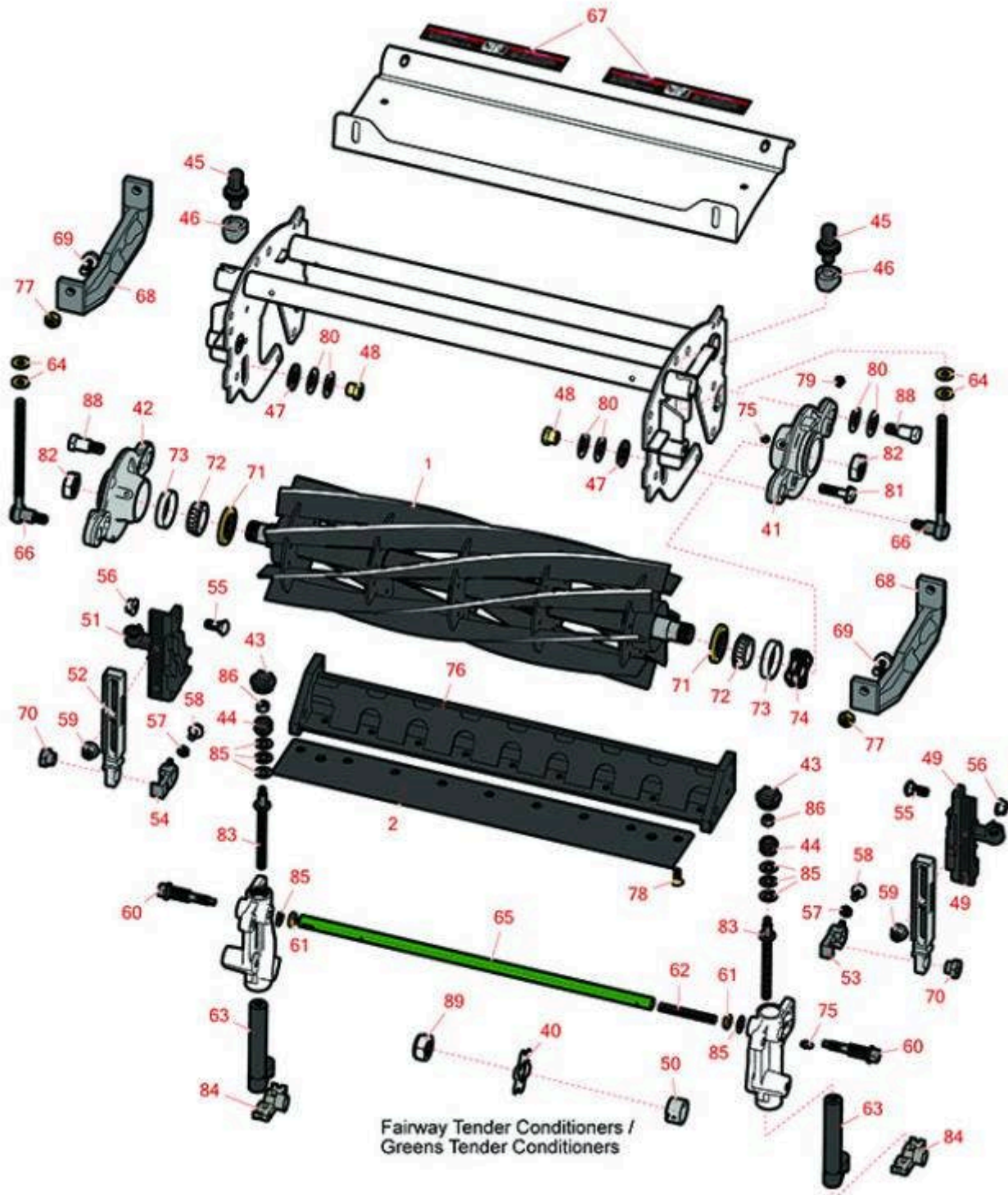




# Replaces John Deere 7700A Reel Mower

## Parts

Cutting Unit  
Reel & Bedknife



All original equipment manufacturers names and part numbers are used for identification purposes only, and we are in no way implying that our products are original equipment parts. Prices subject to change without notice.



# Replaces John Deere 7700A Reel Mower

## Parts

Cutting Unit

Reel & Bedknife



Item No	R&R Part No.	OEM Part No.	Description	Qty Req	Order Quantity
---------	--------------	--------------	-------------	---------	----------------

### R&R Reels, Lifetime Guaranteed

1	<b>RTCA19353</b>	TCA19353	Reel - 8 Blade - Internal Splines	1
---	------------------	----------	-----------------------------------	---

*Detail Description: R&R Reel blades are expertly crafted from premium high carbon-boron alloy steel, heat-treated to perfectly complement both R&R and OEM bedknives. Each reel undergoes precision cylindrical grinding on bearing surfaces, followed by relief grinding for optimal performance. Advanced computer balancing ensures extended reel and bearing life. Backed by our lifetime guarantee against defects in materials and craftsmanship under normal use, R&R Reels deliver unmatched durability and cutting precision you can trust.:*

1	<b>RTCA19354</b>	TCA19354	Reel - 10 Blade - Internal Splines	1
---	------------------	----------	------------------------------------	---

*Detail Description: R&R Reel blades are expertly crafted from premium high carbon-boron alloy steel, heat-treated to perfectly complement both R&R and OEM bedknives. Each reel undergoes precision cylindrical grinding on bearing surfaces, followed by relief grinding for optimal performance. Advanced computer balancing ensures extended reel and bearing life. Backed by our lifetime guarantee against defects in materials and craftsmanship under normal use, R&R Reels deliver unmatched durability and cutting precision you can trust.:*

1	<b>RAMT2895</b>	AMT2895	Reel - 5 Blade	1
---	-----------------	---------	----------------	---

*Detail Description: R&R Reel blades are expertly crafted from premium high carbon-boron alloy steel, heat-treated to perfectly complement both R&R and OEM bedknives. Each reel undergoes precision cylindrical grinding on bearing surfaces, followed by relief grinding for optimal performance. Advanced computer balancing ensures extended reel and bearing life. Backed by our lifetime guarantee against defects in materials and craftsmanship under normal use, R&R Reels deliver unmatched durability and cutting precision you can trust.:*

### R&R Bedknives, Lifetime Guaranteed

2	<b>RET17751</b>	ET17751	Bedknife - Standard 12mm	1
---	-----------------	---------	--------------------------	---

*Detail Description: R&R Bedknives are manufactured from high carbon-boron alloy steel and then hardened to RC46-49 to match the temper of our reel blades and original equipment reels. Bedknives are surface ground on the top and front edge and straightened three times before being packaged with oil for rust prevention. All R&R Bedknives now have an increased front edge grind for added life. All R&R Bedknives are guaranteed against defects in material and workmanship under normal use for the life of the part.:*

2	<b>RMT1928</b>	MT1928	Bedknife - 9.5mm (3/8)	1
---	----------------	--------	------------------------	---

All original equipment manufacturers names and part numbers are used for identification purposes only, and we are in no way implying that our products are original equipment parts. Prices subject to change without notice.



# Replaces John Deere 7700A Reel Mower

## Parts

Cutting Unit

Reel & Bedknife



Item No	R&R Part No.	OEM Part No.	Description	Qty Req	Order Quantity
---------	--------------	--------------	-------------	---------	----------------

*Detail Description: R&R Bedknives are manufactured from high carbon-boron alloy steel and then hardened to RC46-49 to match the temper of our reel blades and original equipment reels. Bedknives are surface ground on the top and front edge and straightened three times before being packaged with oil for rust prevention. All R&R Bedknives now have an increased front edge grind for added life. All R&R Bedknives are guaranteed against defects in material and workmanship under normal use for the life of the part.:*

2	<b>RMT3983</b>	MT3983	Bedknife - 6.3 mm (1/4)	1
---	----------------	--------	-------------------------	---

*Detail Description: R&R Bedknives are manufactured from high carbon-boron alloy steel and then hardened to RC46-49 to match the temper of our reel blades and original equipment reels. Bedknives are surface ground on the top and front edge and straightened three times before being packaged with oil for rust prevention. All R&R Bedknives now have an increased front edge grind for added life. All R&R Bedknives are guaranteed against defects in material and workmanship under normal use for the life of the part.:*

2	<b>RTC32581</b>	TCU32581	Bedknife - Razor Tool Steel - 1/4 in HOC - Extended	1
---	-----------------	----------	-----------------------------------------------------	---

### Other Parts Available

40	<b>RMT2624</b>	MT2624	Knife - Greens Conditioner	38
41	<b>RUC13937</b>	UC13937	Housing - w/o Bearing - LH	1
42	<b>RUC13941</b>	UC13941	Housing - w/o Bearing - RH	1
43	<b>RUC16102</b>	TCU24949, UC16102	Cap	2
44	<b>RTC40491</b>	TCU24683, TCU40491	Worm Gear	2
45	<b>RUC16137</b>	TCU24955, UC16137	Adjuster	2
46	<b>RTC25394</b>	TCU25394, TCU27453	Base	2
47	<b>RTC25260</b>	TCU25260	Washer	2
48	<b>RET16572</b>	ET16572	Nut - Hex	2
49	<b>RUC16138</b>	UC16138	Bracket - Front LH	1

All original equipment manufacturers names and part numbers are used for identification purposes only, and we are in no way implying that our products are original equipment parts. Prices subject to change without notice.



# Replaces John Deere 7700A Reel Mower

## Parts

Cutting Unit  
Reel & Bedknife



Item No	R&R Part No.	OEM Part No.	Description	Qty Req	Order Quantity
50	RET14917	ET14917	Spacer	1	
51	RUC16139	UC16139	Bracket - Front RH	1	
52	RUC22790	UC22790	Bracket - Front Roller	2	
53	RUC18211	TCU24461, UC18211	Bracket - LH	1	
54	RUC16109	TCU24461, UC16109	Bracket - RH	1	
55	R03M7191	03M7191	Bolt - Carriage M10 x 25	4	
56	RH135891	H135891	Locknut - 10mm x 1.5 Flanged 10.9	4	
<i>Detail Description: High Strength:</i>					
57	R14M7151	14M7151	Nut - Jam Roller Adj	2	
58	R33114-016	19M7162	Bolt - Hx HD 8mm x 1.25 x 15	2	
59	R14M7465	14M7465	Lock Nut - M10-1.50 Fl	4	
60	RTC26458	TCU26458	Worm Gear	2	
61	R14M7152	14M7152	Nut - 10mm x 1.5 Jam	2	
62	RTC25398	TCU25398	Compression Spring	1	
63	RAUC13597	AUC13597	Adjuster	2	
64	R24H1682	24H1682	Washer - 13/32 x 7/8 x 1/8	4	
65	RTC26729	TCU26729	Tube	1	
66	RTC25317	TCU25317	Adjuster	2	
67	RMT6517	MT6517	Label - Warning	2	
68	RMT2527	MT2527	Shoe - Skid	2	

All original equipment manufacturers names and part numbers are used for identification purposes only, and we are in no way implying that our products are original equipment parts. Prices subject to change without notice.



# Replaces John Deere 7700A Reel Mower

## Parts

Cutting Unit  
Reel & Bedknife



Item No	R&R Part No.	OEM Part No.	Description	Qty Req	Order Quantity
69	<b>R19M7785</b>	19M7785	Bolt - Hex Washer M10-1.5 x 25	4	
70	<b>RTC28635</b>	TCU24555, TCU28635	Eccentric	2	
71	<b>RTC25266</b>	TCU25266	Seal	2	
72	<b>R254-94</b>	JD8933, TCU37582	Tapered Bearing Cone	2	
73	<b>R254-72</b>	JD8253	Cup - Bearing	2	
74	<b>R170610</b>	TCU26530	Spring - Compression	2	
75	<b>R302-5</b>	JD7797, JD7842, JD7844	Fitting - Grease	4	
76	<b>RAMT2973</b>	AMT2973	Backing Bar - Bed Knife	1	
77	<b>R14M7400</b>	14M7400	Locknut - 10mm	2	
78	<b>R19M7573</b>	19M7573	Screw - Bedknife M8-1.25 x 20	9	
79	<b>R170714</b>	E14814	Fitting - Pressure Relief	2	
80	<b>RET16678</b>	ET16678	Washer - Spring	8	
81	<b>R19M7804</b>	19M7804	Bolt - Flanged Hex M10-1.5 x 40	2	
82	<b>RTC26215</b>	TCU26215	Nut - Reel	2	
83	<b>RTC26123</b>	TCU26123	Adjuster	2	
84	<b>RTC28987</b>	TCU25228, TCU28987	Half Clamp - Roller Bkt	2	
85	<b>RET16679</b>	ET16679	Washer - Spring	6	
86	<b>RM148268</b>	M148268	Lock Nut	2	
88	<b>RMT6338</b>	MT6338	Bolt - Shoulder	2	

All original equipment manufacturers names and part numbers are used for identification purposes only, and we are in no way implying that our products are original equipment parts. Prices subject to change without notice.



# Replaces John Deere 7700A Reel Mower Parts

*Cutting Unit  
Reel & Bedknife*



Item No	R&R Part No.	OEM Part No.	Description	Qty Req	Order Quantity
89	<b>RN198341</b>	N198341	Nut - Nyloc 7/8-14	1	

All original equipment manufacturers names and part numbers are used for identification purposes only, and we are in no way implying that our products are original equipment parts. Prices subject to change without notice.