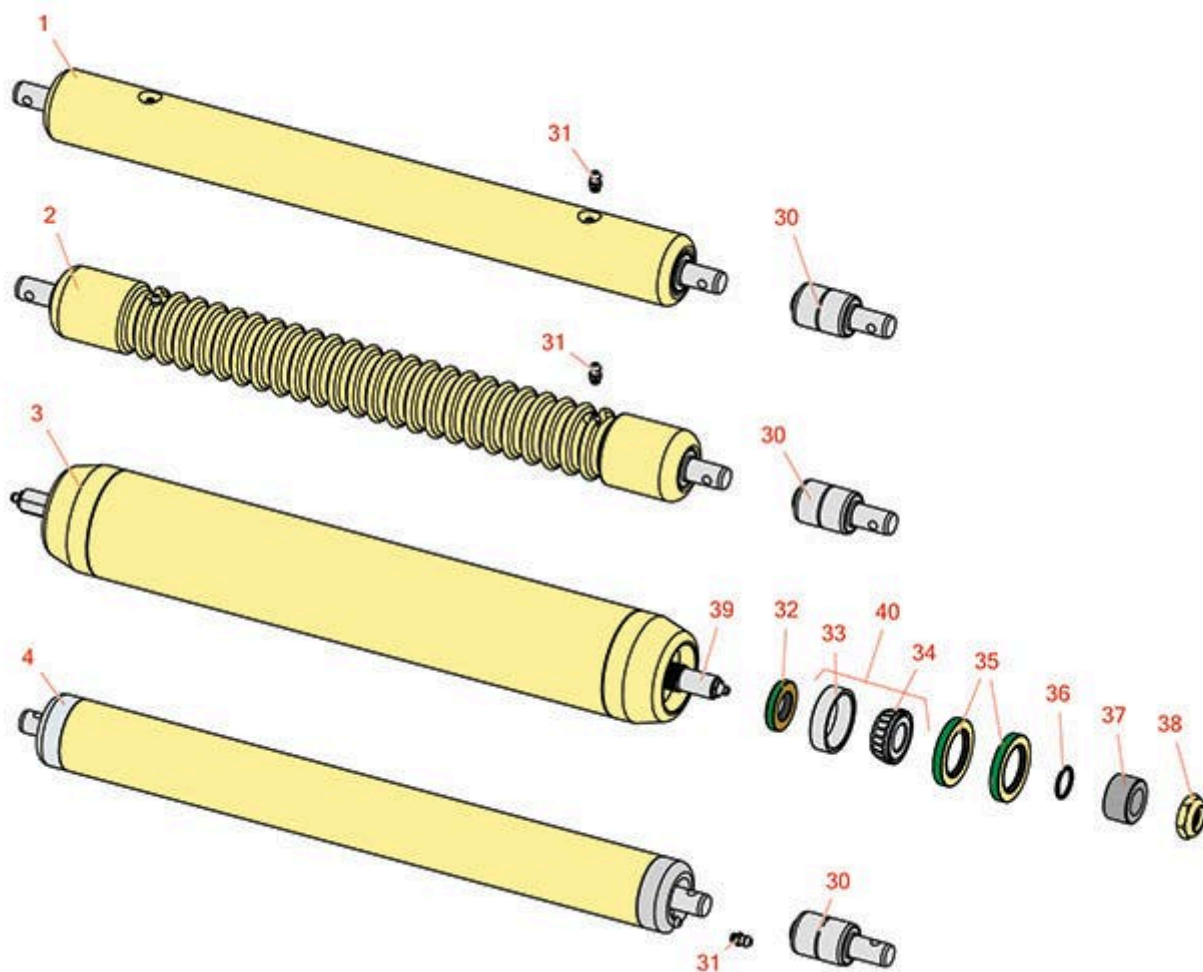




Replaces John Deere 8000A E-Cut Hybrid Reel Mower Parts

Cutting Unit
Rollers



All original equipment manufacturers names and part numbers are used for identification purposes only, and we are in no way implying that our products are original equipment parts. Prices subject to change without notice.



Replaces John Deere 8000A E-Cut Hybrid Reel Mower Parts

Cutting Unit
Rollers



Item No	R&R Part No.	OEM Part No.	Description	Qty Req	Order Quantity
---------	--------------	--------------	-------------	---------	----------------

R&R Rollers

1	RAMT2786	AMT2786, AMT2981, BM20561	Roller - Smooth Solid Steel	1	
---	-----------------	---------------------------------	-----------------------------	---	--

Detail Description: Machined from solid steel, this heavy weight roller uses greasable "water-pump" style bearings.:

2	RAMT2784	AMT2784, AMT2979, BM20562	Roller - Grooved Machined Solid Steel	1	
---	-----------------	---------------------------------	---------------------------------------	---	--

Detail Description: Machined from solid steel, this heavy weight roller uses greasable "water-pump" style bearings.:

3	RTCA19509	TCA19509	Roller - Smooth Tubular Steel	1	
---	------------------	----------	-------------------------------	---	--

Detail Description: Constructed with a through shaft, this heavy duty roller uses greasable tapered bearings for extended life.:

4	RTCA19656	BM24203, BM24204, TCA19656	Roller - Smooth Tubular Steel	1	
---	------------------	----------------------------------	-------------------------------	---	--

Other Parts Available

30	RAA35741	AA35741, AET10129, TCA22836	Bearing	2	
----	-----------------	-----------------------------------	---------	---	--

Detail Description: 1/4" Side Hole:

31	R302-5	JD7797, JD7842, JD7844	Fitting - Grease	2	
----	---------------	------------------------------	------------------	---	--

32	RET15756	ET15756, MT1739, MT739	Seal	2	
----	-----------------	------------------------------	------	---	--

33	R254-79	JD8226	Cup - Bearing	2	
----	----------------	--------	---------------	---	--

Detail Description: Use R254-79M installation mandrel to properly install race.:

All original equipment manufacturers names and part numbers are used for identification purposes only, and we are in no way implying that our products are original equipment parts. Prices subject to change without notice.



Replaces John Deere 8000A E-Cut Hybrid Reel Mower Parts

Cutting Unit
Rollers



Item No	R&R Part No.	OEM Part No.	Description	Qty Req	Order Quantity
34	R254-78	JD8188	Tapered Bearing Cone	2	
35	RET15755	ET15755	Seal - Oil	4	
36	R237-54	U46731, U6731	O-Ring - Small	2	
37	RET15726	ET15726, RET15726	Sleeve - Wear Hardened	2	
38	R3296-15	N101345	Locknut - 3/4-16 Nylon Jam	2	
39	RTC26890	TCU26890	Shaft - Roller	1	
40	R500534		Bearing - with Cup	2	

Detail Description: Kit includes: 1 ea R254-78- Bearing Cone & R254-79 Bearing Cone:

All original equipment manufacturers names and part numbers are used for identification purposes only, and we are in no way implying that our products are original equipment parts. Prices subject to change without notice.