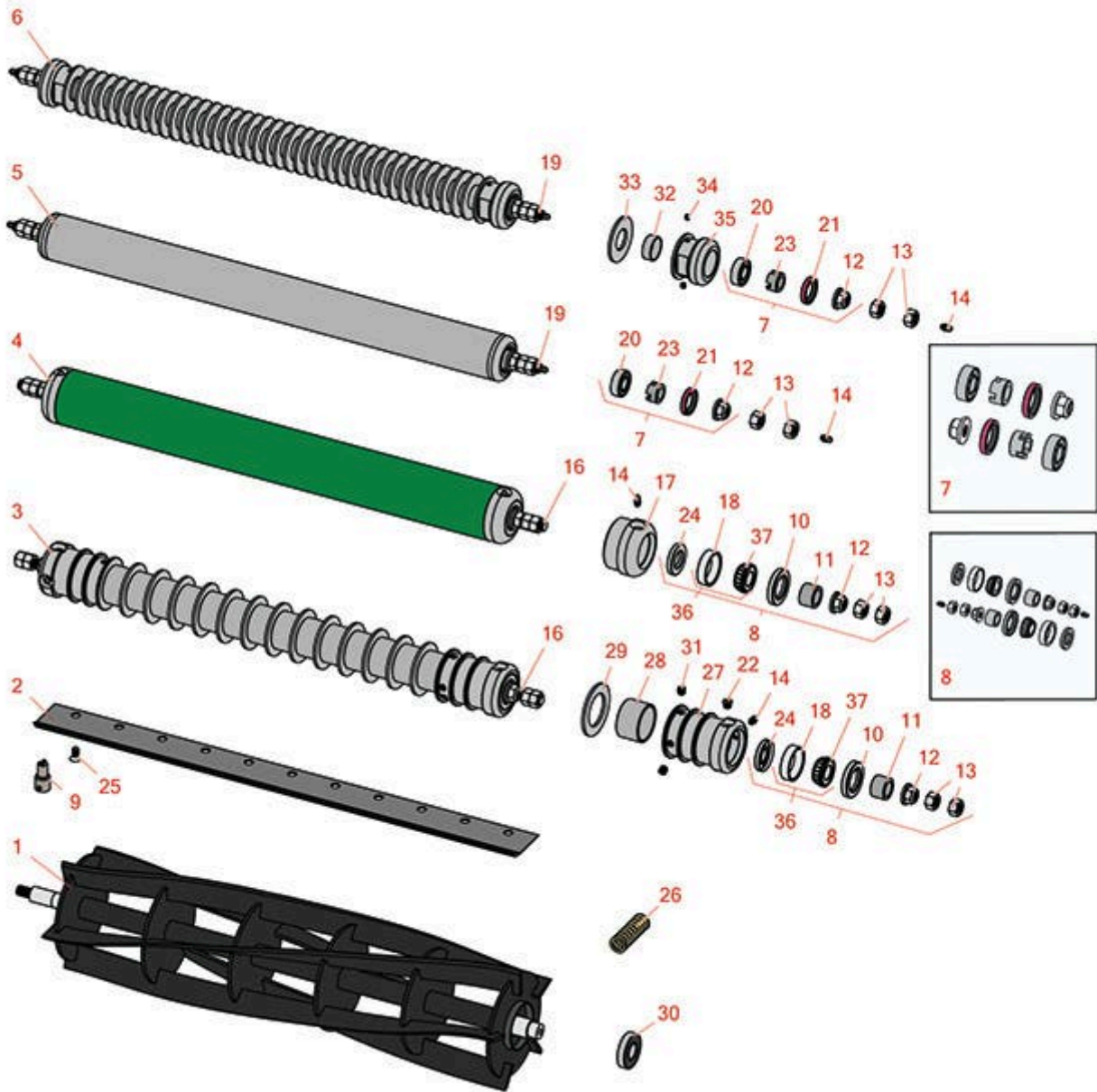




# Replaces Ransomes 180 Parts

Cutting Unit  
Reel & Bedknife



All original equipment manufacturers names and part numbers are used for identification purposes only, and we are in no way implying that our products are original equipment parts. Prices subject to change without notice.



# Replaces Ransomes 180 Parts

Cutting Unit  
Reel & Bedknife



Item No	R&R Part No.	OEM Part No.	Description	Qty Req	Order Quantity
---------	--------------	--------------	-------------	---------	----------------

## R&R Reels, Lifetime Guaranteed

1	<b>RMBB9690</b>	MBB9690	Reel - 5 Blade LH	1	
1	<b>RMBB9691</b>	MBB9691	Reel - 5 Blade RH	2	
1	<b>RMBC1502</b>	MBC1502	Reel - 7 Blade LH	1	
1	<b>RMBC1503</b>	MBC1503	Reel - 7 Blade RH	2	
1	<b>R170600</b>		Reel - 11 Blade LH	1	
1	<b>R170605</b>		Reel - 11 Blade RH	2	
2	<b>RMBA7076</b>	MBA7074, MBA7076	Bedknife - Thick 7/16	1	
2	<b>RMBA7088</b>	MBA7088	Bedknife - Low Cut 7/16	1	

## R&R Rollers

3	<b>R170710R</b>		Roller - Grooved Repairable Steel	1	
<i>Tech Note: Constructed with a through shaft and greasable tapered bearings for extended life, this roller can be repaired by unscrewing the ends and replacing the series of washers and spacers.:</i>					
4	<b>R170715</b>		Roller - Smooth Tubular Steel	1	
<i>Tech Note: Constructed with a through shaft, this heavy-duty roller uses greasable tapered bearings for extended life.:</i>					
5	<b>RA900910</b>	A900910	Roller - Smooth Tubular Steel	1	
<i>Tech Note: Constructed with a through shaft, this steel roller uses a through shaft and ball bearings.:</i>					
6	<b>R170700R</b>		Roller - Grooved Repairable Steel	1	
<i>Tech Note: Constructed with a through shaft and greasable ball bearings, this roller can be repaired by unscrewing the ends and replacing the series of washers and spacers.:</i>					

## Overhaul Kits

7	<b>R170703</b>		Overhaul Kit - Roller	1	
---	----------------	--	-----------------------	---	--

All original equipment manufacturers names and part numbers are used for identification purposes only, and we are in no way implying that our products are original equipment parts. Prices subject to change without notice.



# Replaces Ransomes 180 Parts

Cutting Unit  
Reel & Bedknife



Item No	R&R Part No.	OEM Part No.	Description	Qty Req	Order Quantity
---------	--------------	--------------	-------------	---------	----------------

*Tech Note: Includes 2 ea: R170707 Spacer, R170708 Seal, R170716 Locknut, R303558 Bearing:*

8	<b>R100200</b>		Overhaul Kit - Roller	0	
---	----------------	--	-----------------------	---	--

*Tech Note: Includes 4 ea: R443818 Nuts; 2 ea: R150674 Sleeves, R170716 Locknuts, R253-117 Seals, R253-122 Seals, R254-78 Bearings, R254-79 Bearing Cups, R302-5 Grease Fittings:*

### Service Tools

9	<b>R51-0880</b>		Bedknife Screw Driver Tool	0	
---	-----------------	--	----------------------------	---	--

### Other Parts Available

10	<b>R253-117</b>		Seal - Outer Triple Lip	2	
----	-----------------	--	-------------------------	---	--

11	<b>R150674</b>		Sleeve - Wear 3/4 Plated	2	
----	----------------	--	--------------------------	---	--

12	<b>R170716</b>		Locknut - 1/2-13 Flanged	2	
----	----------------	--	--------------------------	---	--

13	<b>R443818</b>		Nut - 1/2-13 Hex Jam Zinc	4	
----	----------------	--	---------------------------	---	--

14	<b>R302-5</b>		Fitting - Grease	2	
----	---------------	--	------------------	---	--

16	<b>R170713</b>		Shaft - Heavy Duty RR Roller	1	
----	----------------	--	------------------------------	---	--

17	<b>R5-4035</b>		Roller End - 2-7/8 OD	2	
----	----------------	--	-----------------------	---	--

18	<b>R254-79</b>		Cup - Bearing	2	
----	----------------	--	---------------	---	--

*Tech Note: Use R254-79M installation mandrel to properly install race.:*

19	<b>R170702</b>		Shaft - 2-3/8 Grooved Roller	1	
----	----------------	--	------------------------------	---	--

20	<b>R303558</b>		Bearing - Roller	2	
----	----------------	--	------------------	---	--

21	<b>R170708</b>		Seal - 2-3/8 Roller	2	
----	----------------	--	---------------------	---	--

22	<b>R170714</b>		Fitting - Pressure Relief	2	
----	----------------	--	---------------------------	---	--

23	<b>R170707</b>		Spacer - 2 3/8 Roller	2	
----	----------------	--	-----------------------	---	--

24	<b>R253-122</b>		Seal	2	
----	-----------------	--	------	---	--

25	<b>R150476</b>	LS02521B	Screw - Bedknife 5/16-18 x 5/8	11	
----	----------------	----------	--------------------------------	----	--

All original equipment manufacturers names and part numbers are used for identification purposes only, and we are in no way implying that our products are original equipment parts. Prices subject to change without notice.



# Replaces Ransomes 180 Parts

Cutting Unit  
Reel & Bedknife



Item No	R&R Part No.	OEM Part No.	Description	Qty Req	Order Quantity
26	<b>RA291006</b>	A291006	Spring - Bk Adj	2	
27	<b>R150670</b>		Roller End - 2-3/4 Threaded	2	
28	<b>R150676</b>		Spacer - 2-3/4 Dia x 1-1/4 L	14	
29	<b>R150672</b>		Washer - 2-3/4 Roller	13	
30	<b>RA203604</b>	A203604	Bearing	2	
31	<b>R150691</b>		Screw - Set Nyloc 3/8-16 x 3/8	4	
32	<b>R150651</b>		Spacer - 2-3/8 Roller	39	
33	<b>R150653</b>		Washer - 2-3/8 Roller	38	
34	<b>R150690</b>		Screw - Set 1/4-20 x 1/4	4	
35	<b>R150665</b>		Roller End - 2-3/8 Repairable	2	
36	<b>R500534</b>	2208006	Bearing - with Cup	2	
37	<b>R254-78</b>		Tapered Bearing Cone	2	

All original equipment manufacturers names and part numbers are used for identification purposes only, and we are in no way implying that our products are original equipment parts. Prices subject to change without notice.