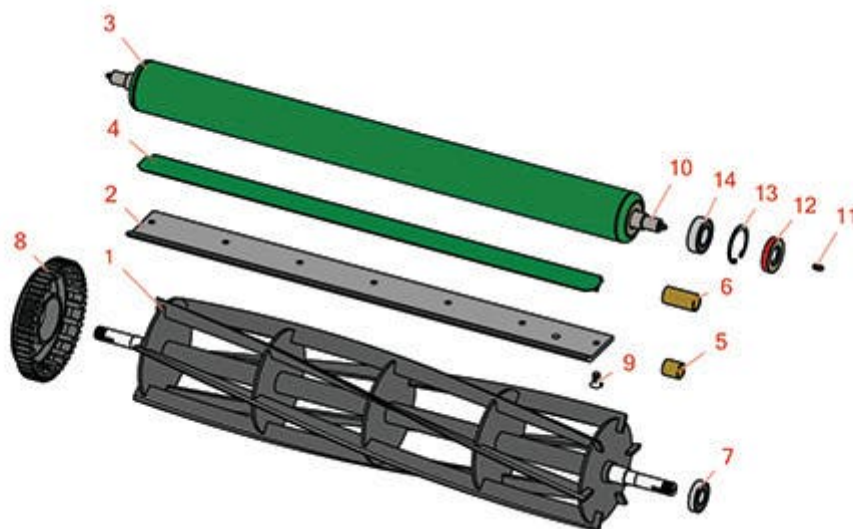




# Replaces Ransomes Sportcutter MK10 &MK11 & Magna MK12 Parts

Cutting Unit  
Reel & Bedknife



All original equipment manufacturers names and part numbers are used for identification purposes only, and we are in no way implying that our products are original equipment parts. Prices subject to change without notice.



# Replaces Ransomes Sportcutter MK10 &MK11 & Magna MK12 Parts

Cutting Unit  
Reel & Bedknife



Item No	R&R Part No.	OEM Part No.	Description	Qty Req	Order Quantity
---------	--------------	--------------	-------------	---------	----------------

## R&R Reels, Lifetime Guaranteed

1	<b>R2772</b>	MBC2772A	Reel - 6 Blade 8 Dia	1
---	--------------	----------	----------------------	---

*Detail Description: R&R Reel blades are expertly crafted from premium high carbon-boron alloy steel, heat-treated to perfectly complement both R&R and OEM bedknives. Each reel undergoes precision cylindrical grinding on bearing surfaces, followed by relief grinding for optimal performance. Advanced computer balancing ensures extended reel and bearing life. Backed by our lifetime guarantee against defects in materials and craftsmanship under normal use, R&R Reels deliver unmatched durability and cutting precision you can trust.:*

1	<b>R5955</b>	MBB2235B	Reel - 5 Blade	1
---	--------------	----------	----------------	---

*Detail Description: R&R Reel blades are expertly crafted from premium high carbon-boron alloy steel, heat-treated to perfectly complement both R&R and OEM bedknives. Each reel undergoes precision cylindrical grinding on bearing surfaces, followed by relief grinding for optimal performance. Advanced computer balancing ensures extended reel and bearing life. Backed by our lifetime guarantee against defects in materials and craftsmanship under normal use, R&R Reels deliver unmatched durability and cutting precision you can trust.:*

1	<b>R5956</b>		Reel - 6 Blade	1
---	--------------	--	----------------	---

*Detail Description: R&R Reel blades are expertly crafted from premium high carbon-boron alloy steel, heat-treated to perfectly complement both R&R and OEM bedknives. Each reel undergoes precision cylindrical grinding on bearing surfaces, followed by relief grinding for optimal performance. Advanced computer balancing ensures extended reel and bearing life. Backed by our lifetime guarantee against defects in materials and craftsmanship under normal use, R&R Reels deliver unmatched durability and cutting precision you can trust.:*

## R&R Bedknives, Lifetime Guaranteed

2	<b>R170550</b>	MBA7024, MBA7024A	Bedknife - Single Lip	1
---	----------------	----------------------	-----------------------	---

*Detail Description: R&R Bedknives are manufactured from high carbon-boron alloy steel and then hardened to RC46-49 to match the temper of our reel blades and original equipment reels. Bedknives are surface ground on the top and front edge and straightened three times before being packaged with oil for rust prevention. All R&R Bedknives now have an increased front edge grind for added life. All R&R Bedknives are guaranteed against defects in material and workmanship under normal use for the life of the part.:*

## R&R Rollers

3	<b>R170560</b>	LMSD614B	Roller - Smooth Rear	1
---	----------------	----------	----------------------	---

All original equipment manufacturers names and part numbers are used for identification purposes only, and we are in no way implying that our products are original equipment parts. Prices subject to change without notice.



# Replaces Ransomes Sportcutter MK10 &MK11 & Magna MK12 Parts

*Cutting Unit  
Reel & Bedknife*



Item No	R&R Part No.	OEM Part No.	Description	Qty Req	Order Quantity
---------	--------------	--------------	-------------	---------	----------------

## Other Parts Available

4	<b>R500655</b>	LTC0635A	Deflector - Metal - Bed Bar	1	
5	<b>RLTC0629</b>	LTC0629	Bushing - Oilite For Bed Bar	2	
6	<b>RGSF3002PN</b>	GSF3002PN	Bushing - Oilite Int. Gear	2	
7	<b>RA203604</b>	A203604	Bearing	2	
8	<b>RLTC4546A</b>	LTC4546A	Gear - Main	2	
9	<b>R170555</b>	LSO2521B	Screw - 3/8-16 x 3/4 Flat HD	7	
10	<b>R170561</b>		Shaft - Roller - Fits R170560	1	
11	<b>R302-5</b>		Fitting - Grease	2	
12	<b>RC-10024</b>	C-10024	Seal - Roller	2	
13	<b>RC-10025</b>	C-10025	Ring - Retaining	2	
14	<b>RC-10209</b>	C-10209	Bearing - Ball Rear Roller	2	

All original equipment manufacturers names and part numbers are used for identification purposes only, and we are in no way implying that our products are original equipment parts. Prices subject to change without notice.