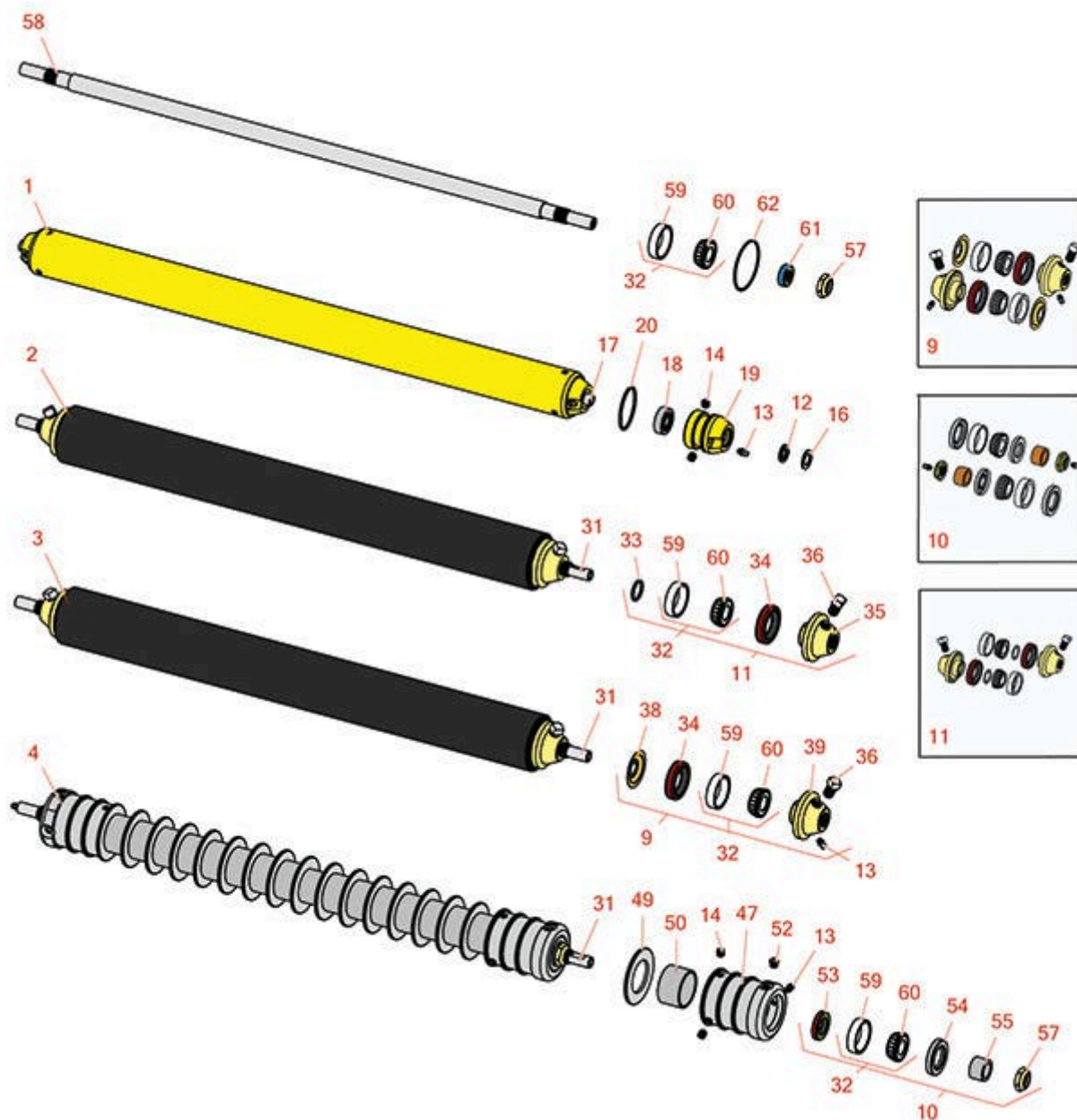




# Replaces Roseman Fairway Parts

Cutting Unit  
Rollers



All original equipment manufacturers names and part numbers are used for identification purposes only, and we are in no way implying that our products are original equipment parts. Prices subject to change without notice.



# Replaces Roseman Fairway Parts

Cutting Unit  
Rollers



Item No	R&R Part No.	OEM Part No.	Description	Qty Req	Order Quantity
---------	--------------	--------------	-------------	---------	----------------

## R&R Rollers

1	<b>RAG-40</b>	AG-40	Roller - Fits Hyd Unit	1	
<i>Detail Description: This smooth steel roller uses ball bearings.:</i>					
2	<b>R700520</b>		Roller - Smooth Tubular Steel Oil Filled	1	
<i>Detail Description: Constructed with a through shaft, this oil filled heavy-duty roller uses tapered bearings for extended life.:</i>					
3	<b>R700525</b>		Roller - Smooth Tubular Steel	1	
<i>Detail Description: Constructed with a through shaft, this heavy duty roller uses greasable tapered bearings for extended life.:</i>					
4	<b>R700526</b>		Roller - Grooved Repairable Steel	1	
<i>Detail Description: Constructed with a through shaft, this heavy duty roller uses greasable tapered bearings for extended life.:</i>					

## Overhaul Kits

9	<b>R700505</b>		Conversion Kit - Roller	1	
<i>Detail Description: Includes: 2 each: R254-78 Bearing Cones, R254-79 Bearing Cups, R328062 Seals, R412063 Square Head Set Screws, R700501 Roller Ends &amp; R700502 Grease Retainers.:</i>					
10	<b>R100135</b>		Overhaul Kit - Roller	0	
<i>Detail Description: Includes 2 ea.:R302-5 Grease Fittings, R253-122 Seals, R253-117 Seals, R150674 Wear Sleeves, R254-78 Bearings, R254-79 Bearing Cups, &amp; R3296-15 Locknuts:</i>					
11	<b>R100140</b>		Overhaul Kit - Oil Filled Roller	0	
<i>Detail Description: Includes 2 ea.: R500574 Roller Collar, R500534 Bearing Cup &amp; Cone, R459007 O-ring, R328062 Seal, R412063 Screw:</i>					

## Other Parts Available

12	<b>R148-0</b>	148-0	Seal - Roller	2	
13	<b>R302-5</b>	173-0	Fitting - Grease	2	
14	<b>R150691</b>	182-0	Screw - Set Nyloc 3/8-16 x 3/8	6	

All original equipment manufacturers names and part numbers are used for identification purposes only, and we are in no way implying that our products are original equipment parts. Prices subject to change without notice.



# Replaces Roseman Fairway Parts

Cutting Unit  
Rollers



Item No	R&R Part No.	OEM Part No.	Description	Qty Req	Order Quantity
16	<b>R105-0</b>	105-0	Washer - Roller	2	
17	<b>RG-42</b>	G-42	Shaft - Roller	1	
18	<b>RG-43</b>	G-43	Bearing - Roller	2	
19	<b>RG-44</b>	G-44	Housing - Roller	2	
20	<b>RG-57</b>	G-57	O-Ring - Roller Housing	2	
31	<b>R700521</b>		Shaft - 3 Dia Roller	1	
32	<b>R500534</b>		Bearing - with Cup	2	
<i>Detail Description: Kit includes: 1 ea R254-78- Bearing Cone &amp; R254-79 Bearing Cone:</i>					
33	<b>R459007</b>		O-Ring - Roller	2	
34	<b>R328062</b>		Seal - Roller	2	
35	<b>R500574</b>		Collar - Roller	2	
36	<b>R412063</b>		Screw - Sq. HD. Set	2	
38	<b>R700502</b>		Retainer - Grease	2	
39	<b>R700501</b>		Roller End - Regreasable	2	
47	<b>R150675</b>		Roller - End - 3 Threaded	2	
49	<b>R150673</b>		Washer - 3 Repairable Roller	15	
50	<b>R150676</b>		Spacer - 2-3/4 Dia x 1-1/4 L	16	
52	<b>R170714</b>		Fitting - Pressure Relief	2	
53	<b>R253-122</b>		Seal	2	
54	<b>R253-117</b>		Seal - Outer Triple Lip	2	
55	<b>R150674</b>		Sleeve - Wear 3/4 Plated	2	
57	<b>R3296-15</b>	G-371	Locknut - 3/4-16 Nylon Jam	2	

All original equipment manufacturers names and part numbers are used for identification purposes only, and we are in no way implying that our products are original equipment parts. Prices subject to change without notice.



## Replaces Roseman Fairway Parts

Cutting Unit  
Rollers



Item No	R&R Part No.	OEM Part No.	Description	Qty Req	Order Quantity
58	<b>RG-364</b>	G-364	Shaft - Roller - 7/8 Dia.	1	
59	<b>R254-79</b>	G-372	Cup - Bearing	2	
<i>Detail Description: Use R254-79M installation mandrel to properly install race.:</i>					
60	<b>R254-78</b>	G-373	Tapered Bearing Cone	2	
61	<b>RG-367</b>	G-367	Seal - Fits O.E.M. Roller	2	
62	<b>RG-366</b>	G-366	O-Ring	2	

All original equipment manufacturers names and part numbers are used for identification purposes only, and we are in no way implying that our products are original equipment parts. Prices subject to change without notice.