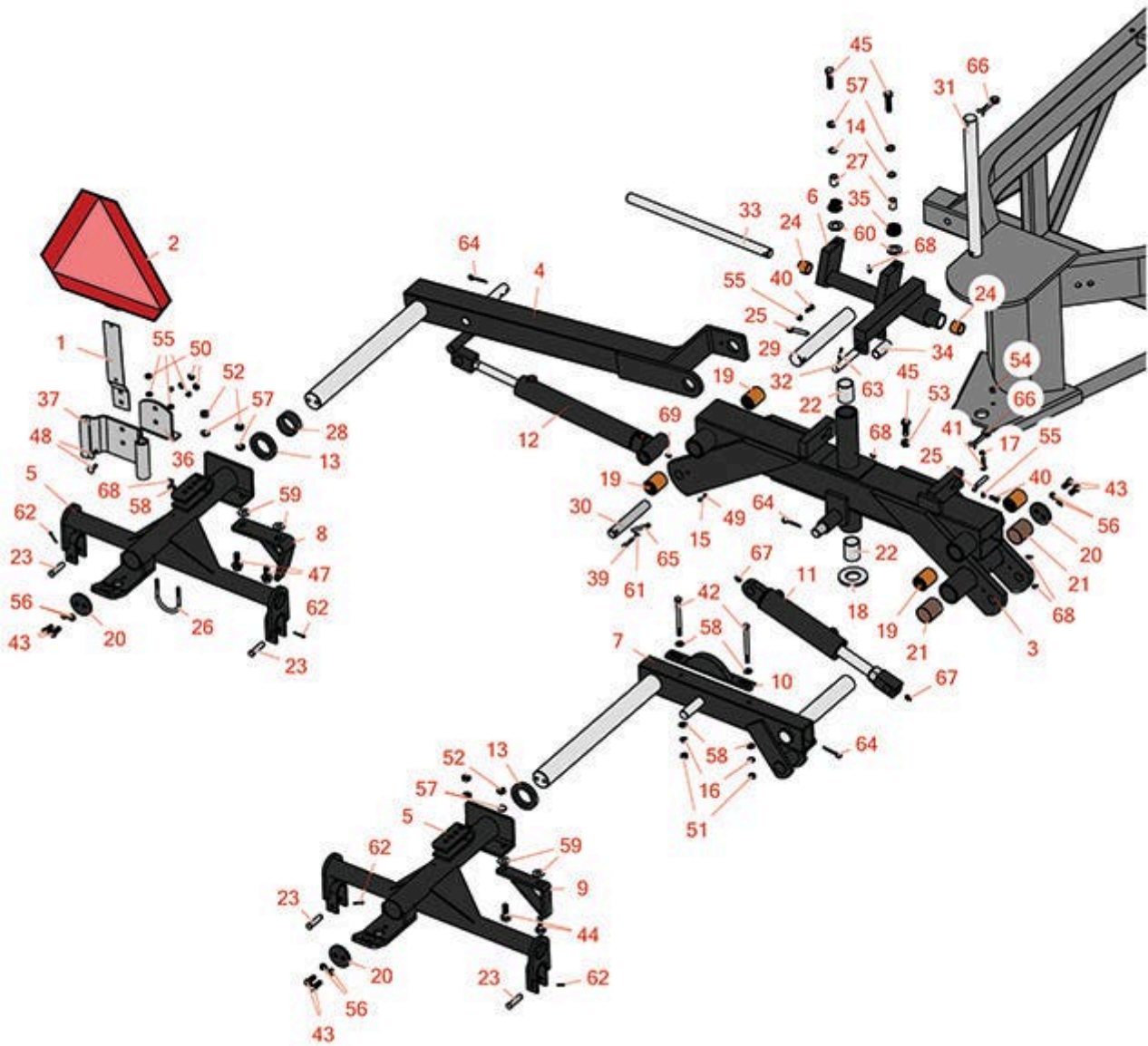




Replaces R&R Products Power Lift 7180GD Parts

*Pull Frame
Rear Carrier*



All original equipment manufacturers names and part numbers are used for identification purposes only, and we are in no way implying that our products are original equipment parts. Prices subject to change without notice.



Replaces R&R Products Power Lift 7180GD Parts

Pull Frame
Rear Carrier



Item No	R&R Part No.	OEM Part No.	Description	Qty Req	Order Quantity
1	R112409		Spade Mount - Fits Smv Sign	1	
2	R112410		Sign - Slow Moving Vehicle	1	
3	R116653		Carrier Frame Assy - Rear	1	
<i>Tech Note: Includes R550344, R342049, R343229 & R471227:</i>					
4	R116654		Wing Arm Assy - RH Rear	1	
4	R116655		Wing Arm Assy - LH Rear	1	
5	R5000622	R122409	Carrier Frame Assy	3	
6	R122410		Arm Assy	1	
7	R122412		Center Arm Assy	1	
8	R163206		Cam - Black	2	
9	R163207		Cam - Center Arm	1	
10	R163208		Cam Assy - Black	1	
11	R163214		Hydraulic Cylinder	1	
11	R500798	R502798	Seal Kit - Fits R130210 Cylinder	1	
12	R163217		Hydraulic Cylinder	2	
12	R503067		Seal Kit - Fits R163217 Cyl	1	
13	R269005		Ring - Spacer 1/2	3	
14	R307314		Washer - 1/2	1	

All original equipment manufacturers names and part numbers are used for identification purposes only, and we are in no way implying that our products are original equipment parts. Prices subject to change without notice.



Replaces R&R Products Power Lift 7180GD Parts

*Pull Frame
Rear Carrier*



Item No	R&R Part No.	OEM Part No.	Description	Qty Req	Order Quantity
15	R3253-3	446130, R01-166-0070, R01-166-0410, R23-9-GD, R24-7150, R352-167, R446128, R446130	Washer - Lock 1/4	2	
16	R3254-6	446142, R01-166-0010, R01-166-0280, R01-166-0610, R12H304, R3253-5, R3254-18, R3290-223, R446140, R446142, R48-9370	Washer - Lock 3/8	2	
17	R310266	3256-3, R09056, R452004	Washer - Flat 5/16 USS	1	
17	R453009	3256-3, R01-166-0400, R24-10-BD, R24-9-AD, R24H1136, R32-9650, R3256-2, R3256-23, R3256-67, R3290-217, R3556-3, R4-2390, R452006, R7-0152	Washer - Flat 5/16 SAE	1	
18	R341942		Washer - 1-1/2	1	
19	R550344	R342022	Bushing - Formed 1.5 x 1.625 x 2	4	
20	R342028		End Cap	4	

All original equipment manufacturers names and part numbers are used for identification purposes only, and we are in no way implying that our products are original equipment parts. Prices subject to change without notice.



Replaces R&R Products Power Lift 7180GD Parts

Pull Frame
Rear Carrier



Item No	R&R Part No.	OEM Part No.	Description	Qty Req	Order Quantity
21	R342049		Bushing - Formed 1.75 x 1.875 x 2	2	
22	R343229		Bushing - Bronze	2	
23	R343870		Clevis Pin - 1/2 x 2	6	
24	R364140	R345610	Bushing	2	
<i>Tech Note: Pull Frame:</i>					
25	R346091	R364091	Pin - Retainer	3	
26	R346190		U-Bolt - 5/16-18 x 2-1/2	1	
27	R351419		Spacer	2	
28	R363189		Spacer - 1 in	2	
29	R363192		Pin - Pivot	2	
30	R363194		Pin - Front Lift Cyl	2	
31	R363195		Pin - Carrier Pivot	1	
32	R363215		Shaft	1	
33	R363221		Shaft - 18-1/4 in	1	
34	R363229		Roller	1	
35	R363230		Roller - Centering	2	
36	R363231		Bracket - Black	1	
37	R363234		Socket - Mounting - Smv	1	
39	R400116	R20-7-AD, R30-9680, R321-9, R3222-3	Bolt - Hex HD 1/4-20 x 1-1/2	2	
40	R400184	400184	Screw - 5/16-18 x 3/4 Hex	3	

All original equipment manufacturers names and part numbers are used for identification purposes only, and we are in no way implying that our products are original equipment parts. Prices subject to change without notice.



Replaces R&R Products Power Lift 7180GD Parts

*Pull Frame
Rear Carrier*



Item No	R&R Part No.	OEM Part No.	Description	Qty Req	Order Quantity
41	R400190	R01-150-0720, R01-178-0510, R30-8680, R322-6, R513343	Bolt - Hex HD 5/16-18 x 1-1/4 GR5	1	
42	R400280		Bolt - Hex HD 3/8-16 x 4-1/2 GR5	2	
43	R400370		Bolt - Hex HD 7/16-20 x 1 GR5	8	
44	R400408	325-6, R01-150-0090, R01-178-0812, R20-87-AD, R20-87-AGD, R20-87-AGF, R3226-2, R325-6, R513376, R513378	Bolt - Hex HD 1/2-13 x 1-1/2	2	
45	R400412		Bolt - Hex HD 1/2-13 x 2	3	
47	R403754		Bolt - Whizlock 1/2-13 x 1-1/2	4	
48	R441602		Bolt - Carriage 5/16-18 x 3/4	2	
49	R443102	R01-188-0420, R22-11-AJD, R3217-5	Nut - 1/4-20 Yellow Zinc	2	
50	R443106	3218-2, 443106, R01-188-0518, R09003, R22-12-AJD, R32111-4, R3217-4, R3217-6, R513295, R513412, R915112P, R915978, R915979	Nut - 5/16-18 Y/Zinc Plated	4	
51	R443110		Nut - 3/8-16 Hex	2	

All original equipment manufacturers names and part numbers are used for identification purposes only, and we are in no way implying that our products are original equipment parts. Prices subject to change without notice.



Replaces R&R Products Power Lift 7180GD Parts

*Pull Frame
Rear Carrier*



Item No	R&R Part No.	OEM Part No.	Description	Qty Req	Order Quantity
52	R443118	R01-188-0813, R22-15-AJD, R3217-9	Nut - 1/2-13 Zinc	6	
53	R443818	R01-191-0813, R3218-18, R3218-5	Nut - 1/2-13 Hex Jam Zinc	2	
54	R444718	444718	Nut - 5/16-18 Center Lock YZ	1	
55	R446136	446136, R446134	Washer - Lock 5/16 Zinc	3	
56	R446146	446148, R446148	Lock Washer - 7/16	8	
57	R446154	R446152	Washer - Lock 1/2	8	
58	R453011	3256-24, 453011, R01-166-0100, R01-166-0120, R01-166-0270, R01-166-0500, R01-166-0600, R01-166-0620, R132-4593, R237-12, R24-10-AD, R24-11-AD, R24-11-BD, R24-12-AD, R24-12-BD, R30-9310, R32-8190, R3256-24, R3256-3, R3256-36, R3256-4, R47-9950	Washer - Flat 3/8 SAE Y/Zinc	4	

All original equipment manufacturers names and part numbers are used for identification purposes only, and we are in no way implying that our products are original equipment parts. Prices subject to change without notice.



Replaces R&R Products Power Lift 7180GD Parts

*Pull Frame
Rear Carrier*



Item No	R&R Part No.	OEM Part No.	Description	Qty Req	Order Quantity
59	R453017	3256-26, R01-166-0050, R01-166-0240, R01-166-0800, R24-13-AD, R24-14-AD, R32-8110, R3256-6, R452012, R69-8980	Washer - Flat 1/2	0	
60	R453022	R01-166-0480, R01-166-1220, R21-3880, R217-21, R3-7471, R30-8550, R30-9110, R3256-28, R3256-44, R46-9030	Washer - 3/4 SAE	2	
61	R453023	R3256-1, R3256-72	Washer - Flat 1/4	2	
62	R460028	R01-151-0230, R28-10-D, R3272-7, R48-7530	Pin - Cotter 1/8 x 1	6	
63	R460050	R01-151-0060, R3272-23	Pin - Cotter 3/16 x 1-1/4	2	
64	R460052		Pin - Cotter 3/16 x 1-1/2	6	
65	R460072		Pin - Cotter 1/4 x 2-1/2	2	
66	R460088		Pin - Cotter 3/8 x 2-1/2	2	

All original equipment manufacturers names and part numbers are used for identification purposes only, and we are in no way implying that our products are original equipment parts. Prices subject to change without notice.



Replaces R&R Products Power Lift 7180GD Parts

*Pull Frame
Rear Carrier*



Item No	R&R Part No.	OEM Part No.	Description	Qty Req	Order Quantity
67	R471219	471219, R30-8360, R302-2, R302-24, R302-31, R471231, RJD7759, RJD7798	Zerk - Grease	2	
68	R471227		Fitting - Grease 1/4-28 45 Deg	7	
69	R302-5	R173-0, R21-6010, R255825, R302-37, R302-47, R302-57, R302-58, R302-6, R31-0300, R32-9660, R471214, R471223, R471226, R60-0800, R62-3880, R92-4181, RJD7797, RJD7842, RJD7844, RM0004	Fitting - Grease	2	

All original equipment manufacturers names and part numbers are used for identification purposes only, and we are in no way implying that our products are original equipment parts. Prices subject to change without notice.