

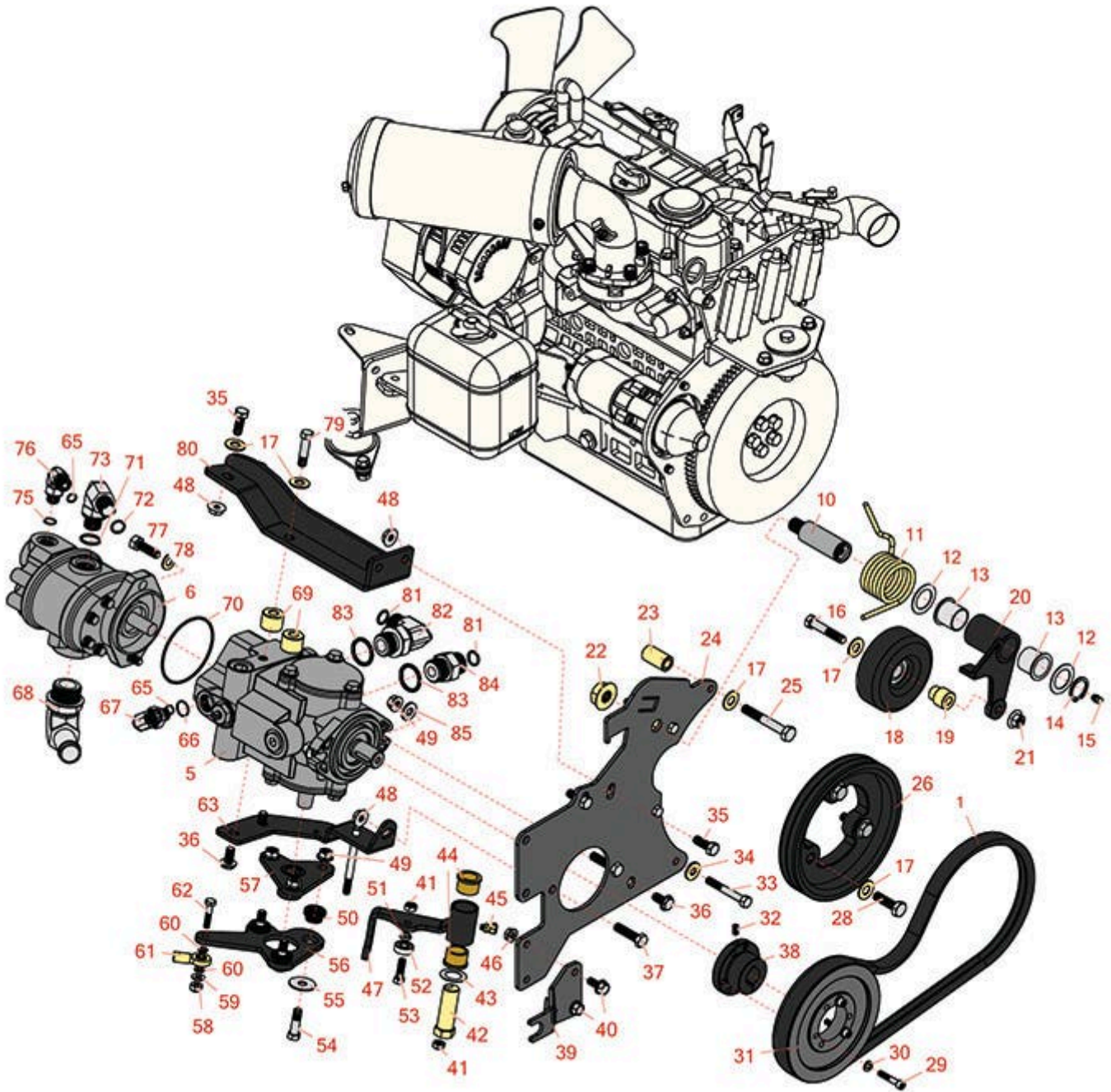


# Replaces R&R Products Reel Max 331LP

## Parts

*Traction Unit*

*Hydrostat Neutral Arm*



All original equipment manufacturers names and part numbers are used for identification purposes only, and we are in no way implying that our products are original equipment parts. Prices subject to change without notice.



# Replaces R&R Products Reel Max 331LP

## Parts

*Traction Unit*

*Hydrostat Neutral Arm*



Item No	R&R Part No.	OEM Part No.	Description	Qty Req	Order Quantity
<b>Belts</b>					
1	<b>R150512</b>	R95-8730	Belt - Hydrastat	1	
<b>Gauges and Controls</b>					
5	<b>R104-4890</b>	R104-4832	Pump - Piston	1	
6	<b>R95-8601</b>		Pump - Gear	1	
<b>Other Parts Available</b>					
10	<b>R99-3529</b>		Shaft - Pivot - Idler	1	
11	<b>R95-8917</b>		Spring - Torsion	1	
12	<b>R74-1810</b>		Washer	2	
13	<b>R99-3631</b>		Bushing - Flanged	2	
14	<b>R458039</b>	R32151-36	Ring - Retaining	1	
15	<b>R302-5</b>	R173-0, R21-6010, R255825, R302-37, R302-47, R302-57, R302-58, R302-6, R31-0300, R32-9660, R471214, R471223, R471226, R60-0800, R62-3880, R92-4181, RJD7797, RJD7842, RJD7844, RM0004	Fitting - Grease	1	

All original equipment manufacturers names and part numbers are used for identification purposes only, and we are in no way implying that our products are original equipment parts. Prices subject to change without notice.



# Replaces R&R Products Reel Max 331LP

## Parts

*Traction Unit*

*Hydrostat Neutral Arm*



Item No	R&R Part No.	OEM Part No.	Description	Qty Req	Order Quantity
16	<b>R323-10</b>	R01-150-0680, R01-178-0616, R100-6663, R100-8320, R1489, R20-51-AD, R20-51-AGD, R3224-6, R323-35, R908336, REP-300-ZB	Bolt - Hex HD 3/8-16 x 2	1	
17	<b>R80-6990</b>		Washer - Hardened	9	
18	<b>R95-8802</b>		Pulley- Idler	1	
19	<b>R95-8806</b>		Spacer	1	
20	<b>R99-3623-03</b>		Arm - Idler	1	
21	<b>R32128-21</b>	32128-21	Locknut - Flanged 3/8-16 Whiz Top Lock	1	
22	<b>R104-8300</b>	R119-4041	Locknut - 5/16-18 Flanged Y/Zinc	1	
23	<b>R95-8736</b>		Spacer	1	
24	<b>R95-8933-03</b>	R95-8933	Plate - Mount - Pump	1	
25	<b>R42-9370</b>		Bolt - Hex HD 10mm x 70mm	1	
26	<b>R99-3412-03</b>	R99-3412	Pulley	1	
28	<b>R56-2140</b>		Bolt	3	
29	<b>R316797</b>	R321-13	Bolt - 1/4-20 x 1-1/4	3	
30	<b>R3253-3</b>	446130, R01-166-0070, R01-166-0410, R23-9-GD, R24-7150, R352-167, R446128, R446130	Washer - Lock 1/4	3	

All original equipment manufacturers names and part numbers are used for identification purposes only, and we are in no way implying that our products are original equipment parts. Prices subject to change without notice.



# Replaces R&R Products Reel Max 331LP

## Parts

*Traction Unit*

*Hydrostat Neutral Arm*



Item No	R&R Part No.	OEM Part No.	Description	Qty Req	Order Quantity
31	<b>R93-6841</b>		Pulley	1	
32	<b>R3245-36</b>		Screw - Set - Hx Soc HD	1	
33	<b>R151379</b>	R33114-060, R42-9510	Bolt - Hx HD 8-1.25 x 65mm	1	
34	<b>R87-8640</b>	R87-7510	Washer - Flat	1	
35	<b>R3234-11</b>		Bolt - Hex Washer HD	4	
36	<b>R3234-1</b>		Bolt - Flanged Serrated Hex HD 3/8-16 x 3/4	3	
37	<b>R400264</b>	323-7, R01-150-0180, R01-178-0610, R19H1732, R20-48-AD, R20-48-AGD, R32-9160, R3224-3, R323-29, R323-7, R400264, R908035P	Bolt - Hex HD 3/8-16 x 1-1/4	2	
38	<b>R93-6842</b>		Bushing - Taper Lock 7/8	1	
39	<b>R104-0464-03</b>	R99-3553, R99-3553-03	Bracket - Support	1	
40	<b>R3234-5</b>	R62-3310	Bolt - 5/16-18x3/4 Hx Ser Was HD	2	
41	<b>R3296-29</b>	3296-29, R1-804256, R915662P	Locknut - 5/16-18 ESNA	2	
42	<b>R76-8640</b>		Stud - Traction	1	
43	<b>R3-6498</b>	R47-8270	Washer - Thrust	1	
44	<b>R256-113</b>		Bushing - 3/4 ID x 1 1/8 Flange	2	
45	<b>R302-60</b>		Zerk - Grease 90 Deg.	1	

All original equipment manufacturers names and part numbers are used for identification purposes only, and we are in no way implying that our products are original equipment parts. Prices subject to change without notice.



# Replaces R&R Products Reel Max 331LP

## Parts

*Traction Unit*

*Hydrostat Neutral Arm*



Item No	R&R Part No.	OEM Part No.	Description	Qty Req	Order Quantity
46	<b>R32128-44</b>		Nut	2	
47	<b>R104-0422</b>		Neutral Arm Assy	1	
48	<b>R32128-43</b>	R30-8990, R3290-357	Nut - Flanged Whiz - 3/8-16	5	
49	<b>R3296-39</b>	3296-39, R32127-25, R32128-36, R3296-17, R3296-22, R915663P, R99-7443	Locknut - 3/8-16 Nylon	5	
50	<b>R63-9750</b>	R64-9750	Mount - Rubber	3	
51	<b>R100-4817</b>		Spacer - Bearing	1	
52	<b>R251-259</b>	R251-307	Bearing - Ball	1	
53	<b>R3274-104</b>		Bolt - Hx Soc Button HD	1	
54	<b>R150776</b>	R95-3857	Bolt - Button HD Soc CS 3/8-16 x 1-1/2	3	
55	<b>R2844</b>		Washer	3	
56	<b>R99-3594-03</b>		Lever - Pump	1	
57	<b>R99-3598-03</b>	R120-5566	Hub Assy	1	
58	<b>R301504</b>	R32127-24, R32146-17, R3296-16, R3296-42, R915661P, RM40333	Locknut - ESNA 1/4-20	1	
59	<b>R3256-22</b>	R09061, R24-9-BD, R3-1032, R93-0954, R93-0989	Washer - Flat 1/4 Yellow	1	

All original equipment manufacturers names and part numbers are used for identification purposes only, and we are in no way implying that our products are original equipment parts. Prices subject to change without notice.



# Replaces R&R Products Reel Max 331LP

## Parts

*Traction Unit*

*Hydrostat Neutral Arm*



Item No	R&R Part No.	OEM Part No.	Description	Qty Req	Order Quantity
60	<b>R43-5930</b>	R01-176-0030	Washer - Lock M6	2	
61	<b>R2411-41</b>		Rod End - Ball Joint	1	
62	<b>R400112</b>	R400114	Bolt - Hex HD 1/4-20 x 1-1/4	1	
63	<b>R95-8960-03</b>	R95-8960	Bracket- Neutral	1	
65	<b>R237-22</b>	R107-8844, R232-72, R237-78	O-Ring	2	
66	<b>R237-79</b>		O-Ring	1	
67	<b>R340-18</b>		Hydraulic Fitting	1	
68	<b>R56-9530</b>		Hydraulic Fitting - 90 Deg	1	
69	<b>R99-3440</b>		Spacer	2	
70	<b>R353-949</b>	R60-3520	O-Ring	1	
71	<b>R237-80</b>	R327-80	O-Ring	1	
72	<b>R237-30</b>	R23-6320	O-Ring - Seal	1	
73	<b>R340-105</b>		Hydraulic Fitting	1	
75	<b>R237-42</b>	R31-4160, R339897	O-Ring	1	
76	<b>R340-77</b>	R340-100, R95-7889	Hydraulic Fitting	1	
77	<b>R3274-1</b>		Bolt - 3/8-16 x 1 1/4 Soc HD Cap	2	

All original equipment manufacturers names and part numbers are used for identification purposes only, and we are in no way implying that our products are original equipment parts. Prices subject to change without notice.



# Replaces R&R Products Reel Max 331LP

## Parts

*Traction Unit*

*Hydrostat Neutral Arm*



Item No	R&R Part No.	OEM Part No.	Description	Qty Req	Order Quantity
78	<b>R453011</b>	3256-24, 453011, R01-166-0100, R01-166-0120, R01-166-0270, R01-166-0500, R01-166-0600, R01-166-0620, R132-4593, R237-12, R24-10-AD, R24-11-AD, R24-11-BD, R24-12-AD, R24-12-BD, R30-9310, R32-8190, R3256-24, R3256-3, R3256-36, R3256-4, R47-9950	Washer - Flat 3/8 SAE Y/Zinc	2	
79	<b>R233-19</b>		Bolt - Hx HD 3/8-16 x 1 5/8	2	
80	<b>R151345</b>		Bracket - Hydrostat	1	
81	<b>R237-65</b>		O-Ring	2	
82	<b>R340-139</b>		Hydraulic Fitting - 90 Deg	1	
83	<b>R237-81</b>		O-Ring	2	
84	<b>R340-8</b>		Adapter	1	
85	<b>R100-4852</b>		Washer - Hardened	2	

All original equipment manufacturers names and part numbers are used for identification purposes only, and we are in no way implying that our products are original equipment parts. Prices subject to change without notice.