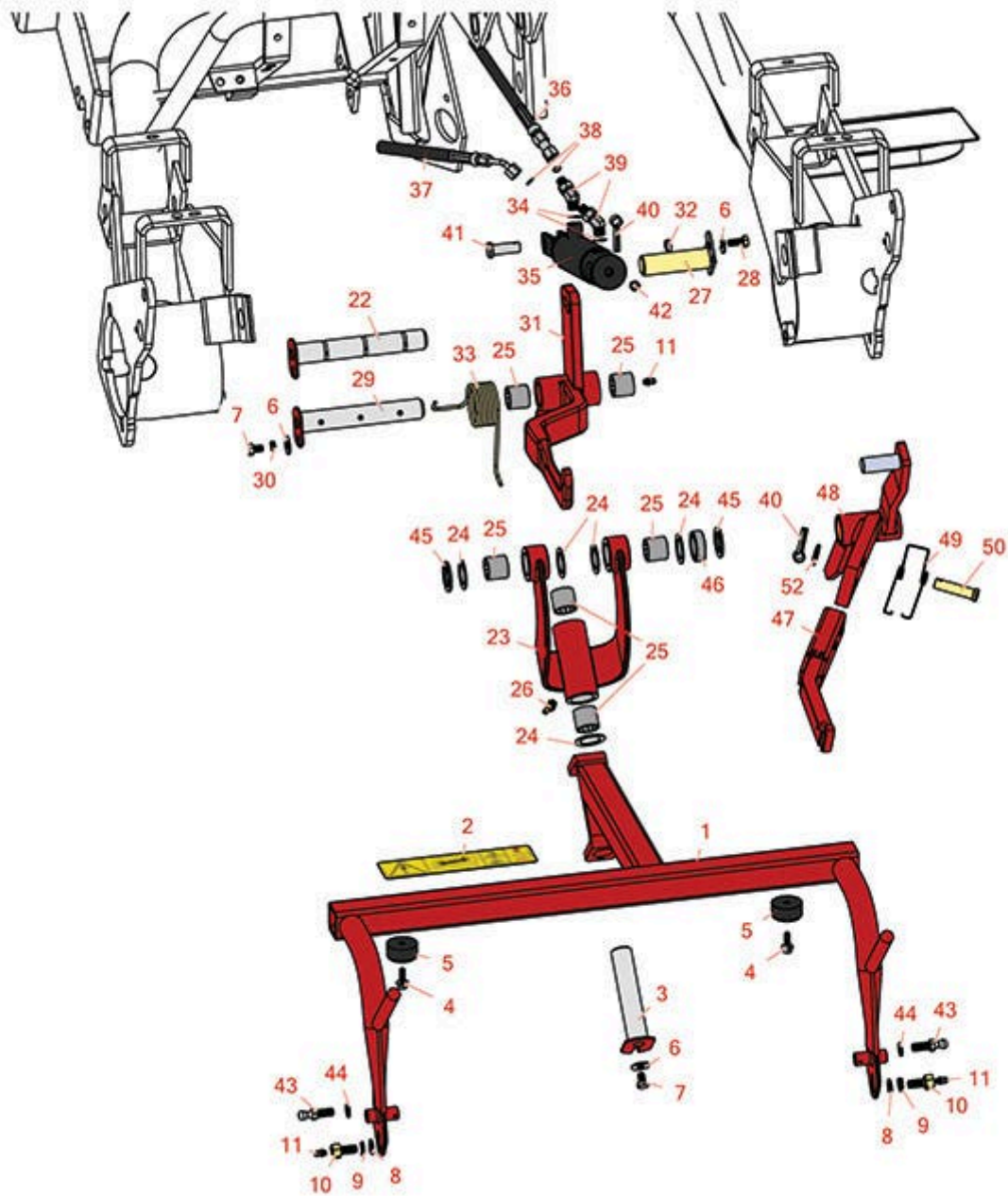




Replaces Toro Greensmaster 3050 Parts

Traction Unit - Model 04351

Rear Pull Frame



All original equipment manufacturers names and part numbers are used for identification purposes only, and we are in no way implying that our products are original equipment parts. Prices subject to change without notice.



Replaces Toro Greensmaster 3050 Parts

Traction Unit - Model 04351

Rear Pull Frame



Item No	R&R Part No.	OEM Part No.	Description	Qty Req	Order Quantity
1	R112-0284	108-8633, 112-0284, 117-9541	Frame - Pull - Center	1	
<i>Tech Note: 2006 & Newer:</i>					
1	R105-0451	105-0451	Frame - Pull Rear (Center)	1	
<i>Tech Note: 2003-2005:</i>					
1	R86-9820	104-2056, 86-9820, 86-9820-01, Oct-00	Frame - Pull Center	1	
<i>Tech Note: 1997-2002:</i>					
2	R93-8064	93-8064	Decal - Warning	1	
2	R93-6688	93-6688	Decal - Warning	1	
3	R10-6090	10-6090	Pin - Pivot 4 7/8 Long	1	
4	R49-2040	32104-42, 32104-95, 32144-44, 49-2040	Bolt - Hex Washer 1/4-20 x 3/4	2	
5	R94-4548	94-4548	Rubber Bumper	2	
6	R453009	01-166-0400, 24-10-BD, 24-9-AD, 32-9650, 3256-2, 3256-23, 3256-3, 3256-67, 3290-217, 3556-3, 4-2390, 7-0152	Washer - Flat 5/16 SAE	3	

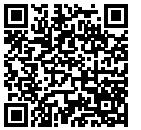
All original equipment manufacturers names and part numbers are used for identification purposes only, and we are in no way implying that our products are original equipment parts. Prices subject to change without notice.



Replaces Toro Greensmaster 3050 Parts

Traction Unit - Model 04351

Rear Pull Frame



Item No	R&R Part No.	OEM Part No.	Description	Qty Req	Order Quantity
6	R310266	3256-23, 3256-3, 3556-3	Washer - Flat 5/16 USS	3	
7	R322-1	01-178-0504, 20-22-AD, 20-22-AGD, 322-1, 513337	Bolt - Hex HD 5/16-18 x 1/2	2	
8	R453011	01-166-0100, 01-166-0120, 01-166-0270, 01-166-0500, 01-166-0600, 01-166-0620, 132-4593, 2356-3, 237-12, 24-10-AD, 24-11-AD, 24-11-BD, 24-12-AD, 24-12-BD, 30-9310, 32-8190, 3256-24, 3256-3, 3256-36, 3256-4, 453011, 47-9950, 48-9220, 513458, 7-0052	Washer - Flat 3/8 SAE Y/Zinc	2	
9	R3253-21	215-51, 30-8470, 3253-21, Jul-12	Washer - Lock 3/8	2	
10	R11-0160	11-0160	Screw - Roller Shaft	2	

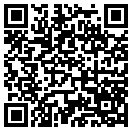
All original equipment manufacturers names and part numbers are used for identification purposes only, and we are in no way implying that our products are original equipment parts. Prices subject to change without notice.



Replaces Toro Greensmaster 3050 Parts

Traction Unit - Model 04351

Rear Pull Frame



Item No	R&R Part No.	OEM Part No.	Description	Qty Req	Order Quantity
11	R302-5	21-6010, 302-11, 302-37, 302-47, 302-5, 302-57, 302-58, 302-6, 31-0300, 32-9660, 60-0800, 62-3880, 92-4181	Fitting - Grease	2	
22	R114-4685	114-4685	Pin - Hinge 6-5/8 Long	1	
23	R105-0452	105-0452	Pivot Hinge Assy	1	
24	R10-8110	10-8110	Washer - Pivot Pin	5	
25	R3-0348	3-0348	Bushing	4	
26	R302-60	302-60	Zerk - Grease 90 Deg.	1	
27	R68-5560	68-5560	Pivot Pin - Cylinder	1	
28	R322-3	01-150-1420, 01-178-0506, 20-24-AD, 20-24-AGD, 322-3, 48-9270, 513339, 908017P	Bolt - Hex HD 5/16-18 x 3/4	5	
29	R27-2550	27-2550	Pin - Hinge 6-5/8 Long	1	

All original equipment manufacturers names and part numbers are used for identification purposes only, and we are in no way implying that our products are original equipment parts. Prices subject to change without notice.



Replaces Toro Greensmaster 3050 Parts

Traction Unit - Model 04351

Rear Pull Frame



Item No	R&R Part No.	OEM Part No.	Description	Qty Req	Order Quantity
30	R3253-4	01-166-0110, 01-166-0510, 23-10-GD, 24-7170, 30-8520, 3253-4, 42-9850, 48-9350, 48-9360, 48-9570, 68-9420, 99-7577	Washer - Lock 5/16 Zinc	1	
31	R110-3955	110-3955	Lift Arm Assy - Center	1	
<i>Tech Note: 2006 & Newer:</i>					
32	R3296-29	1-804256, 3290-357, 3296-29, 915662P	Locknut - 5/16-18 ESNA	1	
33	R110-3953	106-9080, 110-3953	Spring - Torsion - Center	1	
<i>Tech Note: 2004 & Newer:</i>					
34	R237-22	107-8844, 237-22, 237-78	O-Ring	2	
35	R106-9064	106-9064	Hydraulic Cylinder - Center	1	
35	R107-2563	107-2563	Seal Kit	1	
36	R83-1680	83-1680	Hose - Rear Lift Cyl	1	
37	R88-9700	88-9700	Hydraulic Hose Assy - Rear Lift Cylinder	1	
38	R237-21	237-21, 327-21	O-Ring	2	
39	R340-103	340-103, 340-137	Hydraulic Fitting - 45 Deg	2	

All original equipment manufacturers names and part numbers are used for identification purposes only, and we are in no way implying that our products are original equipment parts. Prices subject to change without notice.



Replaces Toro Greensmaster 3050 Parts

Traction Unit - Model 04351

Rear Pull Frame



Item No	R&R Part No.	OEM Part No.	Description	Qty Req	Order Quantity
40	R3272-11	01-151-0010, 01-151-0040, 28-18-D, 28-28-D, 3211-72, 3272-11	Pin - Cotter	1	
41	R283-8	17-3670, 283-8, Jul-35	Clevis Pin - 1/2 x 1-27/64	1	
42	R700415	302-2	Zerk - Grease 1/8 PTF 45 Deg	1	
43	R94-2958	94-2958	Stud - Alloy Ball Joint	2	
44	R3254-6	01-166-0010, 01-166-0280, 01-166-0610, 3253-5, 3254-18, 3254-6, 3290-223, 48-9370	Washer - Lock 3/8	2	
45	R5-1226	5-1226	Spacer	2	
46	R93-2384	93-2384	Spacer - Carrier Frame	1	
47	R62-2420	62-2420, 62-2420-01	Bar - Lift RH / Rear	2	
<i>Tech Note: 1997-2003:</i>					
48	R68-5380	68-5380	Arm - Lift Rear	1	
<i>Tech Note: 1997-2003:</i>					
49	R57-7650	57-7650	Spring - Torsion Lift Arm	1	
<i>Tech Note: 1997-2003:</i>					
50	R63-8750	57-7630, 63-8750	Clevis Pin	1	
<i>Tech Note: 1997-2003:</i>					

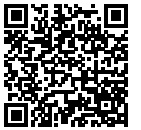
All original equipment manufacturers names and part numbers are used for identification purposes only, and we are in no way implying that our products are original equipment parts. Prices subject to change without notice.



Replaces Toro Greensmaster 3050 Parts

Traction Unit - Model 04351

Rear Pull Frame



Item No	R&R Part No.	OEM Part No.	Description	Qty Req	Order Quantity
52	R3256-26	01-166-0540, 01-166-0820, 17-2530, 24-13-BD, 30-8570, 3256-26, 356206, 48-9390	Washer - 1/2 in	1	

Tech Note: 1997-2003:

52	R453017	01-166-0050, 01-166-0240, 01-166-0800, 24-13-AD, 24-14-AD, 32-8110, 3256-26, 3256-6, 453017, 69-8980, 87-7270	Washer - Flat 1/2	1	
----	----------------	---	-------------------	---	--

Tech Note: 1997-2003:

All original equipment manufacturers names and part numbers are used for identification purposes only, and we are in no way implying that our products are original equipment parts. Prices subject to change without notice.