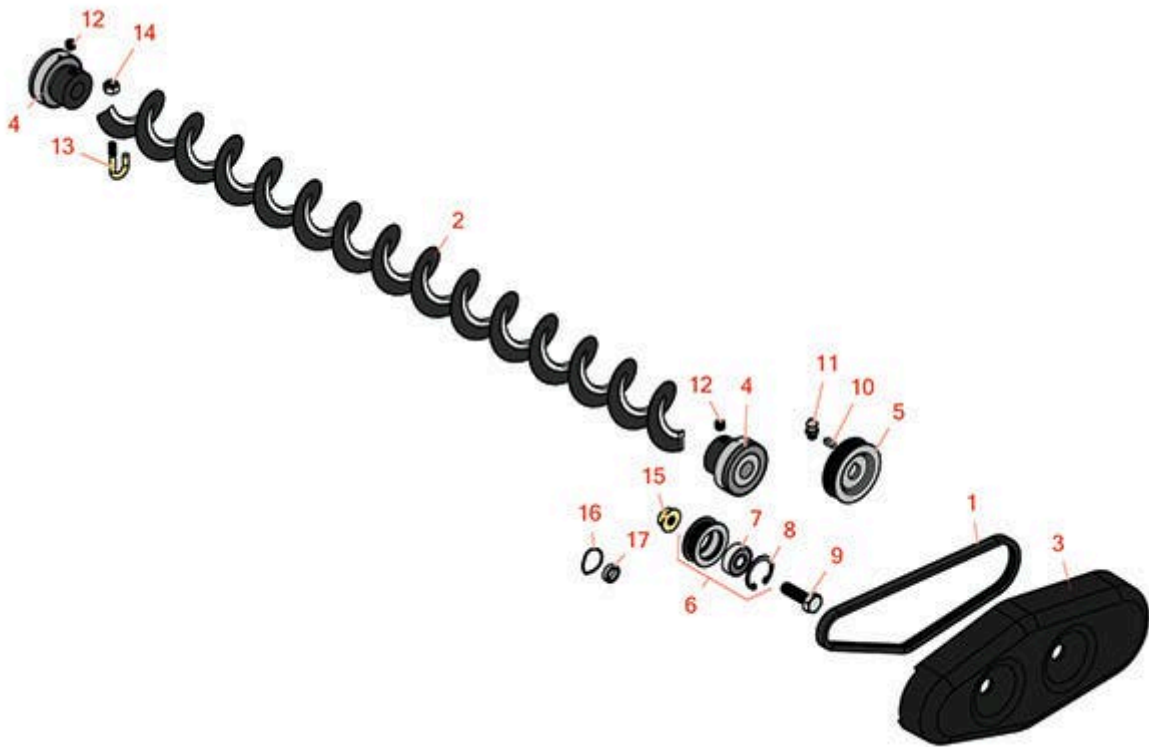




# Replaces Toro Greensmaster 3120 Parts

DPA Cutting Unit - Models 04652, 04654 & 04656

Rear Roller Brush



All original equipment manufacturers names and part numbers are used for identification purposes only, and we are in no way implying that our products are original equipment parts. Prices subject to change without notice.



# Replaces Toro Greensmaster 3120 Parts

DPA Cutting Unit - Models 04652, 04654 & 04656  
Rear Roller Brush



| Item No                      | R&R Part No.     | OEM Part No.   | Description                   | Qty Req | Order Quantity |
|------------------------------|------------------|--|-------------------------------|---------|----------------|
| <b>Belts</b>                 |                  |  |                               |         |                |
| 1                            | <b>R105-5720</b> | 105-5720   | Belt - Poly V                 | 1       |                |
| <b>Other Parts Available</b> |                  |  |                               |         |                |
| 2                            | <b>R105-6792</b> | 104-1829,<br>105-6792  | Brush - Rear Roller           | 1       |                |
| 3                            | <b>R105-5719</b> | 105-5719   | Cover - Rear Brush            | 1       |                |
| 4                            | <b>R104-1842</b> | 104-1842   | Bearing - Roller              | 2       |                |
| 5                            | <b>R106-6917</b> | 106-6917   | Pulley - Driven               | 1       |                |
| 6                            | <b>R104-1834</b> | 104-1820,<br>104-1834  | Idler Bearing - Assy          | 1       |                |
| 7                            | <b>R251-259</b>  | 251-259,<br>251-307  | Bearing - Ball                | 1       |                |
| 8                            | <b>R104-4727</b> | 104-4727   | Ring - Retaining              | 1       |                |
| 9                            | <b>R322-5</b>    | 01-178-0508,<br>20-26-AD,<br>20-26-AGD,<br>30-9000,<br>322-5,<br>513341,<br>519755,<br>908019P,<br>N/A | Bolt - Hex HD 5/16-18 x 1     | 1       |                |
| 10                           | <b>R95-9619</b>  | 95-9619  | Key - Square 1/8 x 1/8 x 5/16 | 1       |                |

All original equipment manufacturers names and part numbers are used for identification purposes only, and we are in no way implying that our products are original equipment parts. Prices subject to change without notice.



# Replaces Toro Greensmaster 3120 Parts

DPA Cutting Unit - Models 04652, 04654 & 04656

Rear Roller Brush



| Item No | R&R Part No.     | OEM Part No.   | Description                      | Qty Req | Order Quantity |
|---------|------------------|--|----------------------------------|---------|----------------|
| 11      | <b>R302-5</b>    | 21-6010,<br>302-11,<br>302-37,<br>302-47,<br>302-5,<br>302-57,<br>302-58,<br>302-6,<br>31-0300,<br>32-9660,<br>60-0800,<br>62-3880,<br>92-4181 | Fitting - Grease                 | 2       |                |
| 12      | <b>R3245-1</b>   | 244-19,<br>32104-67,<br>3245-1   | Screw - Set 1/4-20 x 1/4         | 2       |                |
| 13      | <b>R104-1830</b> | 104-1830   | Bolt - J                         | 2       |                |
| 14      | <b>R3296-2</b>   | 32127-10,<br>3296-2,<br>9157404  | Nut - #10 Lock                   | 2       |                |
| 15      | <b>R104-8300</b> | 104-8300,<br>104-8300,<br>119-4041   | Locknut - 5/16-18 Flanged Y/Zinc | 5       |                |
| 16      | <b>R115-7143</b> | 115-7143   | Spring - Wave                    | 1       |                |
| 17      | <b>R82-4240</b>  | 82-4240  | Spacer - Bearing                 | 2       |                |

All original equipment manufacturers names and part numbers are used for identification purposes only, and we are in no way implying that our products are original equipment parts. Prices subject to change without notice.