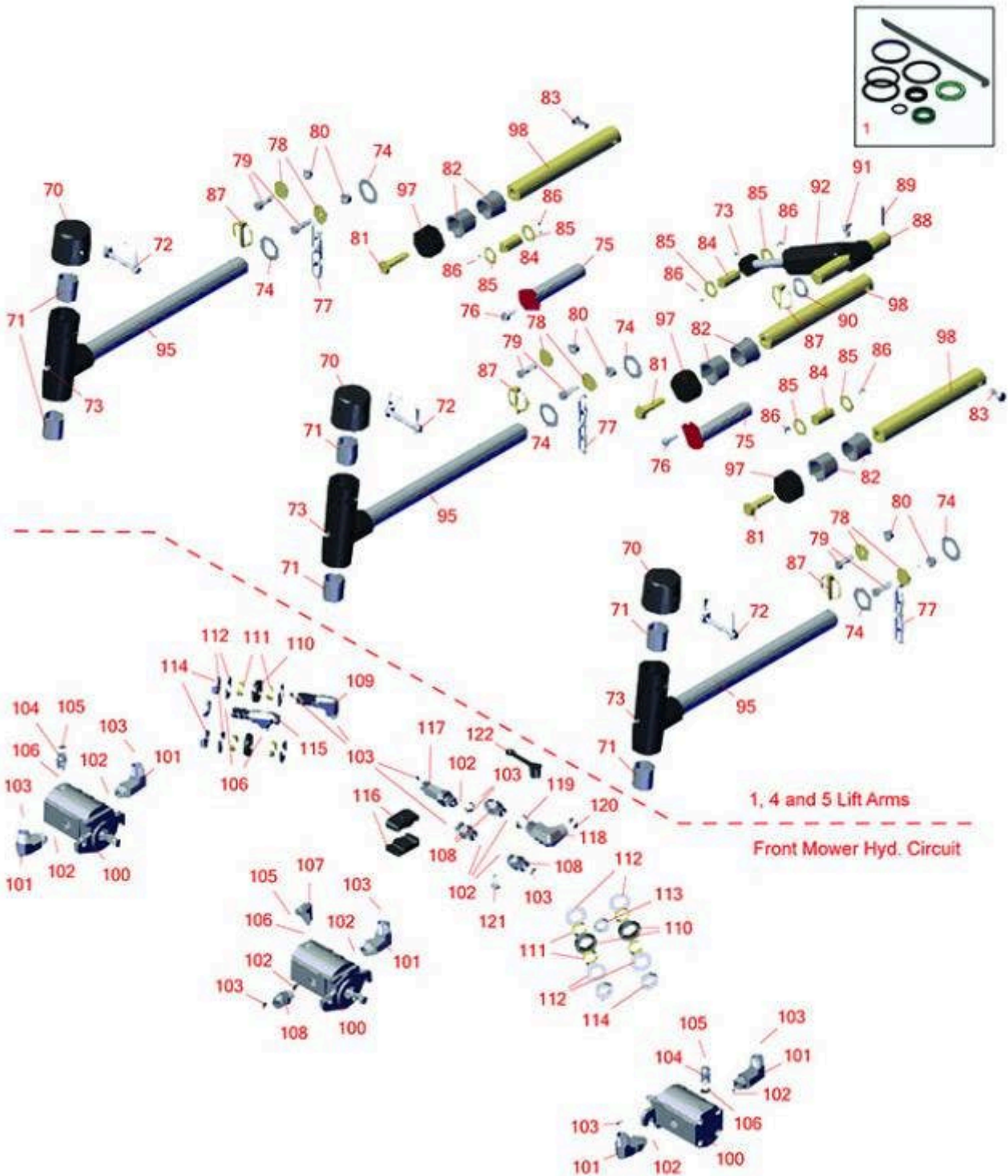




Replaces Toro Reelmaster 3550-D Parts

Traction Unit - Model 03910
1, 4 & 5 Lift Arms & Hydraulics



All original equipment manufacturers names and part numbers are used for identification purposes only, and we are in no way implying that our products are original equipment parts. Prices subject to change without notice.



Replaces Toro Reelmaster 3550-D Parts

Traction Unit - Model 03910
1, 4 & 5 Lift Arms & Hydraulics



Item No	R&R Part No.	OEM Part No.	Description	Qty Req	Order Quantity
Overhaul Kit					
1	R133-2900	133-2900	Seal Kit - Cylinder	1	
Other Parts Available					
70	R107-4027	107-4027	Cap - Pivot Yoke	3	
71	R121-3187	121-3187	Bushing	6	
72	R107-7400	107-7400	Pin - Lynch	3	
73	R302-5	21-6010, 302-11, 302-37, 302-47, 302-5, 302-57, 302-58, 302-6, 31-0300, 32-9660, 60-0800, 62-3880, 92-4181	Fitting - Grease	6	
74	R120-2183	120-2183	Washer - Thrust	6	
75	R10-6090	10-6090	Pin - Pivot 4 7/8 Long	2	
76	R32144-11	32104-23, 32104-31, 32104-83, 32140-69, 32140-82, 32144-11	Bolt - 5/16-18 x 1 Hx Fl Tf	2	
77	R84-2450	84-2450	Chain - Straight 4	3	
78	R63-8410	53-6380, 63-4810, 63-8410	Washer - Isolator Bushing	6	

All original equipment manufacturers names and part numbers are used for identification purposes only, and we are in no way implying that our products are original equipment parts. Prices subject to change without notice.



Replaces Toro Reelmaster 3550-D Parts

*Traction Unit - Model 03910
1, 4 & 5 Lift Arms & Hydraulics*



Item No	R&R Part No.	OEM Part No.	Description	Qty Req	Order Quantity
79	R400264	01-150-0180, 01-178-0610, 20-48-AD, 20-48-AGD, 32-9160, 3224-3, 323-29, 323-7, 400264, 908035P	Bolt - Hex HD 3/8-16 x 1-1/4	6	
80	R104-8301	104-8301, 104-9301, 109-6658, 133-7570	Locknut - 3/8-16 Nylon Flanged	6	
81	R3234-27	3234-27	Bolt - 1/2-13 x 2 Hex	3	
82	R104-0015	104-0015, 104-8339	Bushing - Flanged	6	
83	R323-6	01-150-0010, 01-178-0608, 20-47-AD, 20-47-AGD, 3224-2, 323-6, 49-3510, 908034P, 908332	Bolt - Hex HD 3/8-16 x 1 GR5 YZ	3	
84	R120-9219	120-9219	Pin - Cylinder	2	
85	R3-6498	3--6498, 3-6498, 47-8270	Washer - Thrust	6	
86	R458013	30-0580, 32120-72, 458013, 93-2525, 936125	Ring - Retaining	6	
87	R92-1298	92-1298	Pin - Klik	3	
88	R120-2158	120-2158	Pin	1	

All original equipment manufacturers names and part numbers are used for identification purposes only, and we are in no way implying that our products are original equipment parts. Prices subject to change without notice.



Replaces Toro Reelmaster 3550-D Parts

*Traction Unit - Model 03910
1, 4 & 5 Lift Arms & Hydraulics*



Item No	R&R Part No.	OEM Part No.	Description	Qty Req	Order Quantity
89	R32121-15	21-7710, 32-8880, 32121-15	Pin - Roll 1/4 x 1-1/2	1	
90	R10-8110	10-8110	Washer - Pivot Pin	1	
91	R471219	30-8360, 302-2, 302-24, 302-31, 302-52, 471219	Zerk - Grease	1	
92	R119-6988	119-6988	Hydraulic Cylinder	1	
95	R127-8477	127-8477	Pivot Yoke Assy	3	
97	R121-7855	121-7855	Bumper - Recessed	3	
98	R120-2084	120-2084	Pin - Lift Arm	3	
100	R120-2072	100-6426, 108-6487, 112-9200, 120-2072, 93-1375	Hydraulic Gear Motor	3	
101	R340-98	340-98	Hydraulic Fitting	5	
102	R237-79	237-79	O-Ring	6	
103	R237-30	23-6320, 237-30	O-Ring - Seal	5	
104	R340-92	340-92	Hydraulic Fitting - Striaght	2	
105	R237-21	237-21, 327-21	O-Ring	3	
106	R237-22	107-8844, 237-22, 237-78	O-Ring	4	
107	R340-132	340-132	Hydraulic Fitting - 90 Deg	1	

All original equipment manufacturers names and part numbers are used for identification purposes only, and we are in no way implying that our products are original equipment parts. Prices subject to change without notice.



Replaces Toro Reelmaster 3550-D Parts

*Traction Unit - Model 03910
1, 4 & 5 Lift Arms & Hydraulics*



Item No	R&R Part No.	OEM Part No.	Description	Qty Req	Order Quantity
108	R340-4	340-4	Hydraulic Fitting - Male Connector	5	
109	R93-9151	93-9151	Hydraulic Fitting	1	
110	R240-5	240-5	Grommet - Rubber	4	
111	R69-8960	69-8960	Spacer	8	
112	R69-8930	69-8930	Washer	8	
113	R340-70	340-70	Nut - Lock	2	
114	R340-127	340-127	Nut - Bulkhead	4	
115	R340-68	340-120, 340-68	Fitting - Tee - Bulkhead	1	
116	R56-7976	56-7976	Clamp - Tube	2	
117	R340-109	340-109	Hydraulic Fitting - Run Tee	1	
118	R340-17	340-17	No 10 Male Orfs x No 10 Male Orb	1	
119	R237-80	237-80, 327-80	O-Ring	1	
120	R237-65	237-65, 237.65	O-Ring	1	
121	R3234-7	3234-7	Bolt - Hex Washer HD 5/16-18 x 5/8	2	
122	R354-79	354-79	Cap-Dust	1	

All original equipment manufacturers names and part numbers are used for identification purposes only, and we are in no way implying that our products are original equipment parts. Prices subject to change without notice.