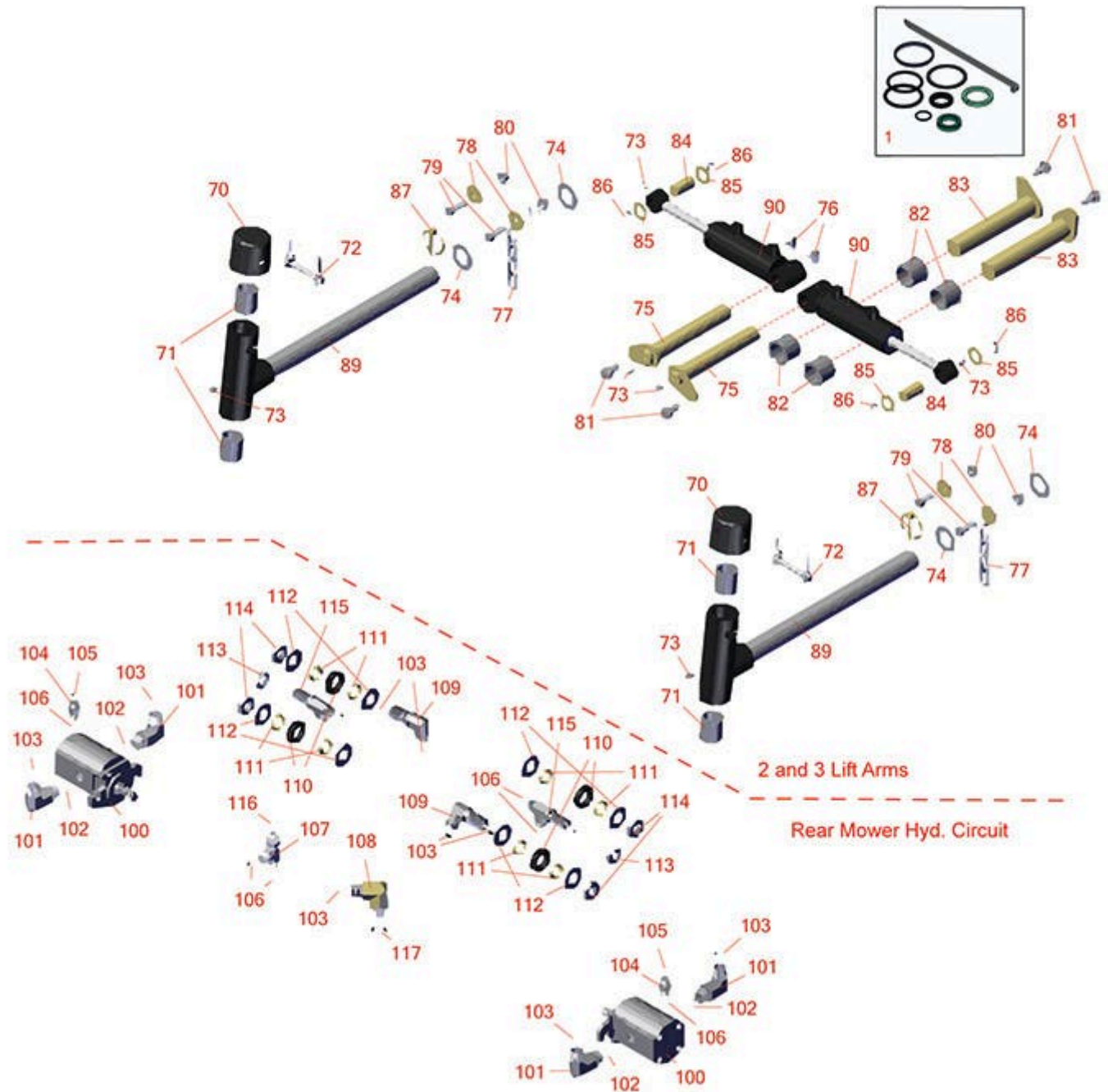




Replaces Toro Reelmaster 3550-D Parts

Traction Unit - Model 03910
2 & 3 Lift Arms & Hydraulics



All original equipment manufacturers names and part numbers are used for identification purposes only, and we are in no way implying that our products are original equipment parts. Prices subject to change without notice.



Replaces Toro Reelmaster 3550-D Parts

*Traction Unit - Model 03910
2 & 3 Lift Arms & Hydraulics*



| Item No | R&R Part No. | OEM Part No. | Description | Qty Req | Order Quantity |
|------------------------------|------------------|--|---------------------------|---------|----------------|
| Overhaul Kit | | | | | |
| 1 | R133-2900 | 133-2900 | Seal Kit - Cylinder | 2 | |
| Other Parts Available | | | | | |
| 70 | R107-4027 | 107-4027 | Cap - Pivot Yoke | 2 | |
| 71 | R121-3187 | 121-3187 | Bushing | 4 | |
| 72 | R107-7400 | 107-7400 | Pin - Lynch | 2 | |
| 73 | R302-5 | 21-6010, 302-11, 302-37, 302-47, 302-5, 302-57, 302-58, 302-6, 31-0300, 32-9660, 60-0800, 62-3880, 92-4181 | Fitting - Grease | 4 | |
| 74 | R120-2183 | 120-2183 | Washer - Thrust | 4 | |
| 75 | R120-2129 | 120-2129 | Pin Assy | 2 | |
| 76 | R471219 | 30-8360, 302-2, 302-24, 302-31, 302-52, 471219 | Zerk - Grease | 2 | |
| 77 | R84-2450 | 84-2450 | Chain - Straight 4 | 2 | |
| 78 | R63-8410 | 53-6380, 63-4810, 63-8410 | Washer - Isolator Bushing | 4 | |

All original equipment manufacturers names and part numbers are used for identification purposes only, and we are in no way implying that our products are original equipment parts. Prices subject to change without notice.



Replaces Toro Reelmaster 3550-D Parts

*Traction Unit - Model 03910
2 & 3 Lift Arms & Hydraulics*



| Item No | R&R Part No. | OEM Part No. | Description | Qty Req | Order Quantity |
|--------------------------------|------------------|---|---------------------------------|---------|----------------|
| 79 | R400264 | 01-150-0180, 01-178-0610, 20-48-AD, 20-48-AGD, 32-9160, 3224-3, 323-29, 323-7, 400264, 908035P | Bolt - Hex HD 3/8-16 x 1-1/4 | 4 | |
| 80 | R104-8301 | 104-8301, 104-9301, 109-6658, 133-7570 | Locknut - 3/8-16 Nylon Flanged | 4 | |
| 81 | R32144-14 | 32104-32, 32104-49, 32144-14 | Bolt - Hex Washer 5/16-18 x 5/8 | 4 | |
| 82 | R104-0015 | 104-0015, 104-8339 | Bushing - Flanged | 4 | |
| 83 | R120-2127 | 120-2127 | Pin Assy | 2 | |
| Ser# 40000000-411599999 | | | | | |
| 84 | R120-9219 | 120-9219 | Pin - Cylinder | 2 | |
| Ser# 40920000-411599999 | | | | | |
| 84 | R104-0046 | 104-0046 | Pin - Slide - Cylinder | 2 | |
| 85 | R3-6498 | 3--6498, 3-6498, 47-8270 | Washer - Thrust | 4 | |
| 86 | R458013 | 30-0580, 32120-72, 458013, 93-2525, 936125 | Ring - Retaining | 4 | |
| 87 | R92-1298 | 92-1298 | Pin - Clik | 2 | |

All original equipment manufacturers names and part numbers are used for identification purposes only, and we are in no way implying that our products are original equipment parts. Prices subject to change without notice.



Replaces Toro Reelmaster 3550-D Parts

*Traction Unit - Model 03910
2 & 3 Lift Arms & Hydraulics*



| Item No | R&R Part No. | OEM Part No. | Description | Qty Req | Order Quantity |
|---------|------------------|---|-----------------------------------|---------|----------------|
| 89 | R127-8477 | 127-8477 | Pivot Yoke Assy | 2 | |
| 90 | R93-9310 | 108-4436, 75-0780, 93-9310 | Hydraulic Cylinder - Front C/Rear | 2 | |
| 100 | R120-2072 | 100-6426, 108-6487, 112-9200, 120-2072, 93-1375 | Hydraulic Gear Motor | 2 | |
| 101 | R340-98 | 340-98 | Hydraulic Fitting | 4 | |
| 102 | R237-79 | 237-79 | O-Ring | 12 | |
| 103 | R237-30 | 23-6320, 237-30 | O-Ring - Seal | 9 | |
| 104 | R340-92 | 340-92 | Hydraulic Fitting - Striaight | 2 | |
| 105 | R237-21 | 237-21, 327-21 | O-Ring | 2 | |
| 106 | R237-22 | 107-8844, 237-22, 237-78 | O-Ring | 2 | |
| 107 | R340-86 | 340-86 | Fitting-Tee | 1 | |
| 108 | R340-105 | 340-105 | Hydraulic Fitting | 1 | |
| 109 | R93-9151 | 93-9151 | Hydraulic Fitting | 2 | |
| 110 | R240-5 | 240-5 | Grommet - Rubber | 4 | |
| 111 | R69-8960 | 69-8960 | Spacer | 8 | |
| 112 | R69-8930 | 69-8930 | Washer | 8 | |
| 113 | R340-70 | 340-70 | Nut - Lock | 2 | |
| 114 | R340-127 | 340-127 | Nut - Bulkhead | 4 | |

All original equipment manufacturers names and part numbers are used for identification purposes only, and we are in no way implying that our products are original equipment parts. Prices subject to change without notice.



Replaces Toro Reelmaster 3550-D Parts

*Traction Unit - Model 03910
2 & 3 Lift Arms & Hydraulics*



| Item No | R&R Part No. | OEM Part No. | Description | Qty Req | Order Quantity |
|---------|----------------|--------------------|--------------------------|---------|----------------|
| 115 | R340-68 | 340-120, 340-68 | Fitting - Tee - Bulkhead | 2 | |
| 116 | R237-42 | 237-42, 31-4160 | O-Ring | 1 | |
| 117 | R237-80 | 237-80, 327-80 | O-Ring | 1 | |

All original equipment manufacturers names and part numbers are used for identification purposes only, and we are in no way implying that our products are original equipment parts. Prices subject to change without notice.