

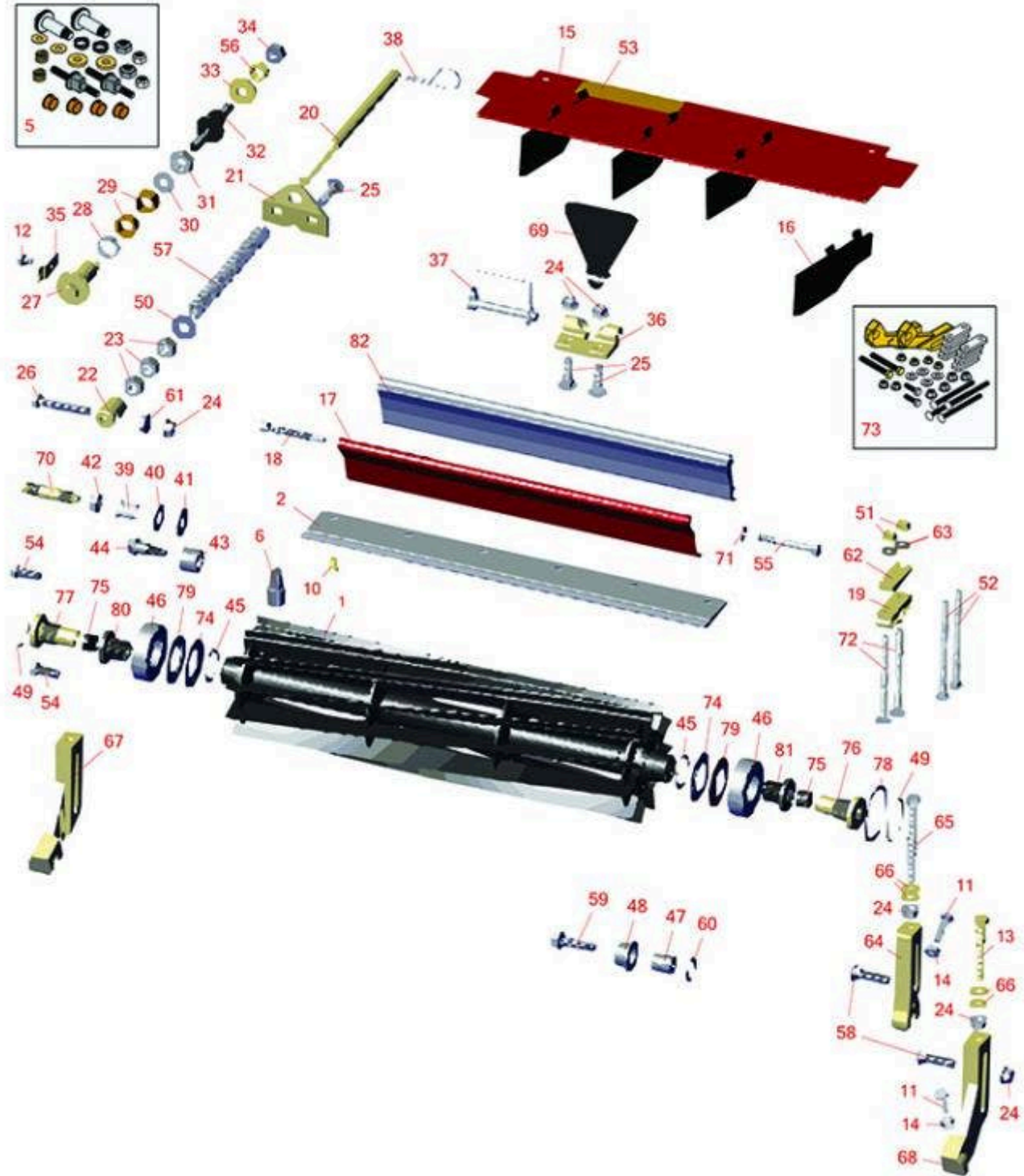


# Replaces Toro Reelmaster 3550-D Parts

18in Cutting Unit - Model 03480, 03481, 03485, 03486,

03911 & 03912

Reel & Bedknife



All original equipment manufacturers names and part numbers are used for identification purposes only, and we are in no way implying that our products are original equipment parts. Prices subject to change without notice.



# Replaces Toro Reelmaster 3550-D Parts

18in Cutting Unit - Model 03480, 03481, 03485, 03486,  
03911 & 03912  
Reel & Bedknife



Item No	R&R Part No.	OEM Part No.	Description	Qty Req	Order Quantity
<b>R&amp;R Reels, Lifetime Guaranteed</b>					
1	R131-3201	119-9150, 127-2053, 131-3201	Reel - 8 Blade Radial 18x5	1	
1	R133-0109	133-0109	Reel - 8 Blade Razor Series Radial 18x5	1	
1	R137-8406	137-8406	Reel - 8 Blade Razor Series Radial w/Bearings and Seals 18x5	1	
1	R131-3202	119-9154, 131-3202	Reel - 11 Blade Radial 18x5	1	
1	R133-0112	133-0112	Reel - 11 Blade Razor Series Forward Swept 18x5	1	
1	R137-8407	137-8407	Reel - 11 Blade Razor Series Forward Swept w/Bearings and Seals 18x5	1	
1	R137-8409	137-8409	Reel - 11 Blade Radial with Bearings and Seals 18x5	1	
<b>R&amp;R Bedknives, Lifetime Guaranteed</b>					
2	R121-3167	121-3167	Bedknife - 6 Hole 18" Low Cut	1	
2	R121-3166	121-3166	Bedknife - 6 Hole 18" Std (Fairway)	1	
<b>R&amp;R Razor Tool Steel Bedknives, Lifetime Guaranteed</b>					
2	R125-2770	125-2770	Bedknife - Razor Tool Steel - 18 Low Cut	1	
2	R121-3165	121-3165	Bedknife - Razor Tool Steel - 18 Fairway	1	
<b>Overhaul Kits &amp; Service Tools</b>					
5	R120-7230	120-7230	Overhaul Kit - Fits DPA Units	1	

All original equipment manufacturers names and part numbers are used for identification purposes only, and we are in no way implying that our products are original equipment parts. Prices subject to change without notice.



# Replaces Toro Reelmaster 3550-D Parts

18in Cutting Unit - Model 03480, 03481, 03485, 03486,  
03911 & 03912  
Reel & Bedknife



Item No	R&R Part No.	OEM Part No.	Description	Qty Req	Order Quantity
<i>Tech Note: Incl 2 ea.: R108-0015, R115-7039, R119-4155, R120-5116, R120-5118, R120-5120, R3296-33, R3296-48 &amp; 4 ea: R106-5344:</i>					
6	<b>R51-0880</b>	51-0880	Bedknife Screw Driver Tool	1	
<b>Other Parts Available</b>					
10	<b>R119-4151</b>	119-4151	Screw - Bedknife 5/16-18 x 17/32	6	
11	<b>R322-16</b>	322-16, Apr-00	Bolt - Hex HD 5/16-18 x 1-1/8	2	
12	<b>R114-9396</b>	114-9396, 119-4067	Bolt - Hex HD 5/16-18 x 3/8	2	
13	<b>R112-7451</b>	100-9429, 112-7451	Bolt - Hex Tap 3/8-16 x 2-3/4	2	
14	<b>R445722</b>	30-8980, 32128-2, 32128-20, 32128-20 , 445722	Nut - Serrated Washer	2	
15	<b>R112-1738</b>	112-1738	Front Grass Shield Assy	1	
16	<b>R110-1706</b>	110-1706	Deflector	4	
17	<b>R112-1735-01</b>	112-1735-01	Rear Shield Assy	1	
<i>Tech Note: Fits Models 03911 &amp; 03912:</i>					
18	<b>R107-7773</b>	107-7773	Bolt - Soc HD Cap 5/16-18 x 2-1/2	1	
19	<b>R106-3924</b>	106-3924	Bracket - Rear Roller	2	
20	<b>R107-2970</b>	107-2970	Rod - Spring	1	
21	<b>R110-4069</b>	110-4069	Bracket	1	
22	<b>R99-8662</b>	99-8662	Tube - Spring	1	

All original equipment manufacturers names and part numbers are used for identification purposes only, and we are in no way implying that our products are original equipment parts. Prices subject to change without notice.



# Replaces Toro Reelmaster 3550-D Parts

18in Cutting Unit - Model 03480, 03481, 03485, 03486,  
03911 & 03912  
Reel & Bedknife



Item No	R&R Part No.	OEM Part No.	Description	Qty Req	Order Quantity
23	<b>R443818</b>	01-191-0813, 3218-18, 3218-5, 3248-18	Nut - 1/2-13 Hex Jam Zinc	3	
24	<b>R104-8301</b>	104-8301, 104-9301, 109-6658, 133-7570	Locknut - 3/8-16 Nylon Flanged	11	
25	<b>R3231-25</b>	01-173-0610, 30-9970, 3231-25, 3231-3, 900064P	Bolt - Carriage 3/8-16 x 1-1/4	4	
26	<b>R104-3396</b>	104-3396	Bolt - Hex HD 3/8-16 x 2-1/4	1	
27	<b>R120-5118</b>	120-5118	Shaft - Adjuster	2	
<i>Tech Note: 2012 &amp; Newer:</i>					
28	<b>R120-5116</b>	120-5116	Washer - Wave	2	
29	<b>R106-5344</b>	106-5344	Bushing - Flanged and Keyed	3	
30	<b>R108-0015</b>	108-0015	Washer - Flat	2	
31	<b>R3296-33</b>	3296-33	Locknut - 5/8-18 ESNA Jam	2	
32	<b>R115-7039</b>	115-7039	Screw - Adjuster - Bedbar	2	
33	<b>R119-4155</b>	119-4155	Washer - Hardened	2	
34	<b>R3296-48</b>	119-4039, 32146-7, 3296-34, 3296-48	Locknut - 7/16-14 ESNA	2	
35	<b>R99-2097</b>	99-2097	Detent - Bed Bar Adjuster	2	
36	<b>R110-4058</b>	110-4058	Bracket - Chain	1	

All original equipment manufacturers names and part numbers are used for identification purposes only, and we are in no way implying that our products are original equipment parts. Prices subject to change without notice.



# Replaces Toro Reelmaster 3550-D Parts

18in Cutting Unit - Model 03480, 03481, 03485, 03486,  
03911 & 03912  
Reel & Bedknife



Item No	R&R Part No.	OEM Part No.	Description	Qty Req	Order Quantity
37	<b>R107-7400</b>	107-7400	Pin - Lynch	1	
38	<b>R92-2762</b>	92-2762	Pin - Snap	1	
39	<b>R56-9520</b>	56-9520	Bushing - Nyliner	2	
40	<b>R61-1950</b>	61-1950	Washer - Nylon - Bed Bar	2	
41	<b>R453017</b>	01-166-0050, 01-166-0240, 01-166-0800, 24-13-AD, 24-14-AD, 32-8110, 3256-26, 3256-6, 453017, 69-8980, 87-7270	Washer - Flat 1/2	2	
42	<b>R3296-28</b>	119-4154, 140-9234, 32127-34, 32128-7, 32128-8, 32136-7, 3296-28	Nut - 1/2-20 ESNA Jam	2	
43	<b>R106-9618</b>	106-9618	Bushing - Rubber	2	
44	<b>R107-2979</b>	107-2979	Bolt - Shoulder	4	
45	<b>R92-2601</b>	92-2601	Snap Ring	2	
46	<b>R115-3296</b>	115-3296	Bearing	2	
47	<b>R108-4279</b>	108-4279	Spacer - Frame	2	
48	<b>R93-2877</b>	93-2877	Bushing - Flanged	2	
49	<b>R237-68</b>	237-68	O-Ring	2	
50	<b>R87-7270-01</b>	87-7270, 87-7270-01	Washer - Flat 1/2	1	

All original equipment manufacturers names and part numbers are used for identification purposes only, and we are in no way implying that our products are original equipment parts. Prices subject to change without notice.



# Replaces Toro Reelmaster 3550-D Parts

18in Cutting Unit - Model 03480, 03481, 03485, 03486,  
03911 & 03912  
Reel & Bedknife



Item No	R&R Part No.	OEM Part No.	Description	Qty Req	Order Quantity
51	<b>R104-8300</b>	104-8300, 104-8300 , 119-4041	Locknut - 5/16-18 Flanged Y/Zinc	4	
52	<b>R3230-30</b>	3230-30	Bolt - Carriage 5/16x4 1/2	4	
53	<b>R93-6688</b>	93-6688	Decal - Warning	1	
54	<b>R3234-11</b>	3234-11	Bolt - Hex Washer HD	4	
55	<b>R322-14</b>	01-150-0830, 01-178-0524, 30-8900, 322-14	Bolt - Hex HD 5/16-18 x 3 GR5	1	
56	<b>R120-5120</b>	120-5120	Spring - Compression	2	
57	<b>R112-1725</b>	112-1725	Spring - Compression	1	
58	<b>R3231-4</b>	01-157-0440, 01-173-0612, 3231-4	Bolt - Carriage 3/8-16 x 1-1/2	2	
59	<b>R3234-19</b>	3234-19	Bolt - Hex Washer 3/8-16x1-3/4	2	
60	<b>R67-9410</b>	67-9410	Washer - Clevis Pin	2	
61	<b>R32128-43</b>	30-8990, 32128-43, 3290-357	Nut - Flanged Whiz - 3/8-16	1	
62	<b>R119-0626</b>	119-0626	Shim - Roller - 1/4 in - Slotted	8	
63	<b>R94-6936</b>	94-6936, 94-9236	Washer - Hardened - 5/16 SAE	4	
64	<b>R125-2796</b>	125-2796	Bracket- Front HOC	2	
<i>Tech Note: Fits 2013 &amp; Newer:</i>					
65	<b>R107-4026</b>	107-4026	Bolt - Hex Tap 3/8-16 x 3-3/4	2	

All original equipment manufacturers names and part numbers are used for identification purposes only, and we are in no way implying that our products are original equipment parts. Prices subject to change without notice.



# Replaces Toro Reelmaster 3550-D Parts

18in Cutting Unit - Model 03480, 03481, 03485, 03486,  
03911 & 03912  
Reel & Bedknife



Item No	R&R Part No.	OEM Part No.	Description	Qty Req	Order Quantity
66	<b>R453011</b>	01-166-0100, 01-166-0120, 01-166-0270, 01-166-0500, 01-166-0600, 01-166-0620, 132-4593, 2356-3, 237-12, 24-10-AD, 24-11-AD, 24-11-BD, 24-12-AD, 24-12-BD, 30-9310, 32-8190, 3256-24, 3256-3, 3256-36, 3256-4, 453011, 47-9950, 48-9220, 513458, 7-0052	Washer - Flat 3/8 SAE Y/Zinc	4	
67	<b>R120-0405</b>	120-0405	Bracket - High HOC - RH	1	
<i>Tech Note: Fits 2011 &amp; Newer:</i>					
68	<b>R120-0404</b>	120-0404	Bracket- High HOC - LH	1	
<i>Tech Note: Fits 2011 &amp; Newer:</i>					
69	<b>R110-4088-03</b>	110-4088-03, 119-8010-03	Kickstand	1	
70	<b>R120-9941</b>	120-9941	Bolt- Bedbar	2	
71	<b>R3256-74</b>	3256-74	Washer - Flat	1	
72	<b>R106-9758</b>		Bolt - Carriage 5/16x4	2	
73	<b>R110-9600</b>	110-9600	High HOC Kit	1	

All original equipment manufacturers names and part numbers are used for identification purposes only, and we are in no way implying that our products are original equipment parts. Prices subject to change without notice.



## Replaces Toro Reelmaster 3550-D Parts

18in Cutting Unit - Model 03480, 03481, 03485, 03486,  
03911 & 03912  
Reel & Bedknife



Item No	R&R Part No.	OEM Part No.	Description	Qty Req	Order Quantity
<i>Tech Note: Includes 1 ea.: R120-0404, R120-0405 &amp; 2 ea.: R112-7451, R322-16, R445722 &amp; 4 ea.: R106-9758, R104-8300, R453011, R104-8301 &amp; 8 ea.: R106-3925:</i>					
74	<b>R121-6953</b>	121-6953	Washer - Rubber - Special	2	
75	<b>R125-5609</b>	125-5609	Plug - Plastic	2	
76	<b>R125-2772</b>	125-2772	Insert Assy - LH	1	
77	<b>R125-2773</b>	125-2773	Insert Assy - RH	1	
78	<b>R105-5700</b>	105-5700, 115-5258	Wave Washer - Bearing	1	
79	<b>R115-3299</b>	115-3299	Seal- Flocked	2	
80	<b>R130-0063</b>	130-0063	Insert-Threaded, 5 Inch (RH)	1	
81	<b>R130-0064</b>	130-0064	Insert-Threaded, 5 Inch (LH)	1	
82	<b>R125-2099</b>	125-2099	Grass Shield - Rear	1	

*Tech Note: Fits Models 03480/03481/03485/03486:*

All original equipment manufacturers names and part numbers are used for identification purposes only, and we are in no way implying that our products are original equipment parts. Prices subject to change without notice.