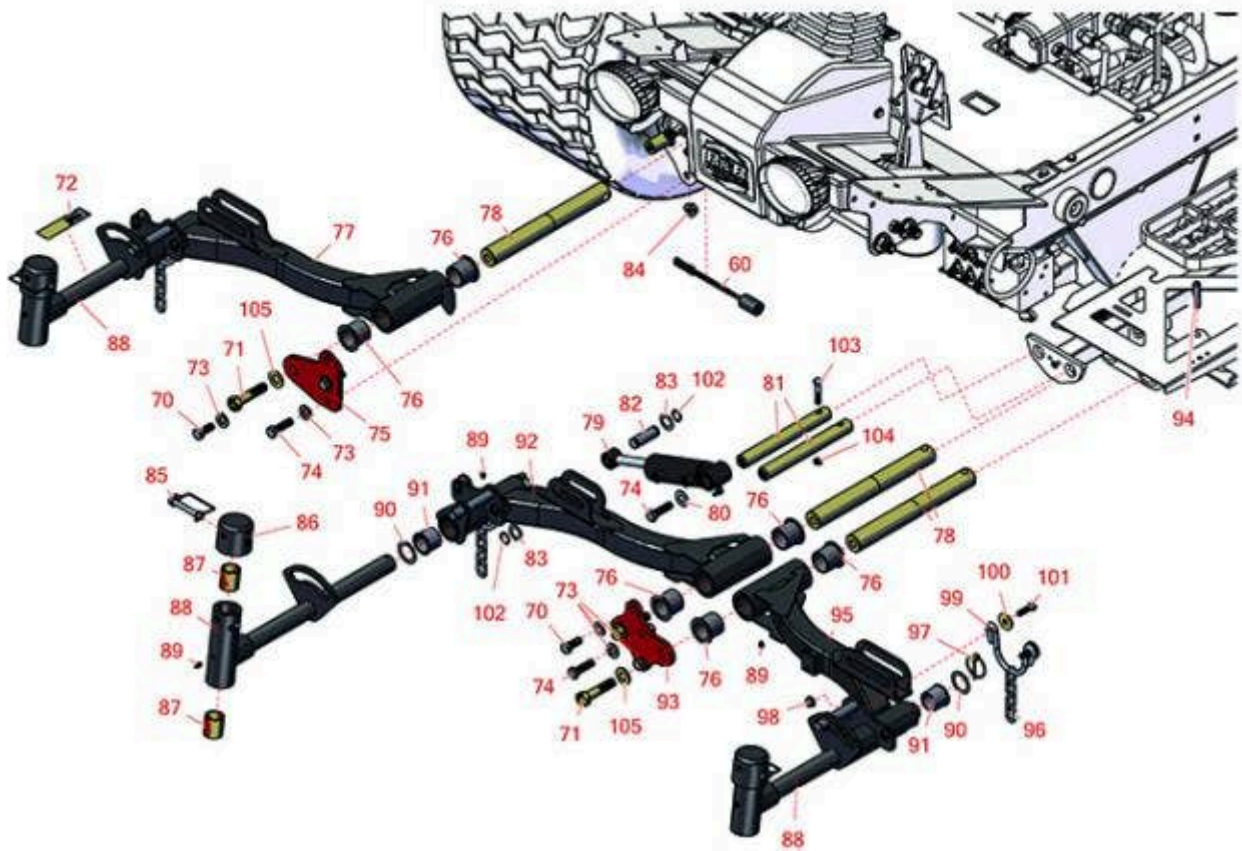




# Replaces Toro Reelmaster 5410G Parts

Traction Unit - Models 03608 & 03673

Front Lift Arm



All original equipment manufacturers names and part numbers are used for identification purposes only, and we are in no way implying that our products are original equipment parts. Prices subject to change without notice.



# Replaces Toro Reelmaster 5410G Parts

Traction Unit - Models 03608 & 03673

Front Lift Arm



Item No	R&R Part No.	OEM Part No.	Description	Qty Req	Order Quantity
---------	--------------	--------------	-------------	---------	----------------

## Gauges and Controls

60	<b>R105-0023</b>	105-0023	Sensor - Proximity	1	
----	------------------	----------	--------------------	---	--

*Tech Note: 2006-2009:*

## Other Parts Available

70	<b>R325-5</b>	01-150-0250, 01-178-0810, 19-8000, 20-86-AGD, 3226-1, 325-5, 513375	Bolt - Hex HD 1/2-13 x 1-1/4	2	
----	---------------	---	------------------------------	---	--

*Tech Note: 2010 & Up:*

71	<b>R327-7</b>	01-150-0700, 01-150-0710, 01-178-1020, 20-125-AGD, 20-126-AGD, 327-7	Bolt - Hx HD	3	
----	---------------	---	--------------	---	--

72	<b>R110-9642</b>	110-9642	Decal	1	
----	------------------	----------	-------	---	--

73	<b>R87-7270-01</b>	87-7270, 87-7270-01	Washer - Flat 1/2	6	
----	--------------------	------------------------	-------------------	---	--

74	<b>R325-7</b>	01-150-0380, 01-178-0814, 3226-3, 325-7, 48-9490	Bolt - 1/2-13 x 1 3/4 Hex HD Gr 5	4	
----	---------------	--	-----------------------------------	---	--

*Tech Note: 2010 & Up:*

74	<b>R3234-38</b>	3234-38	Bolt - Flanged Hex 1/2-13 x 1-1/4	7	
----	-----------------	---------	-----------------------------------	---	--

*Tech Note: 2006-2009:*

75	<b>R117-5153-01</b>	117-5153-01	Plate-Bridge 5	1	
----	---------------------	-------------	----------------	---	--

75	<b>R110-0939-01</b>	110-0939-01	Plate - Bridge - 5	1	
----	---------------------	-------------	--------------------	---	--

All original equipment manufacturers names and part numbers are used for identification purposes only, and we are in no way implying that our products are original equipment parts. Prices subject to change without notice.



# Replaces Toro Reelmaster 5410G Parts

Traction Unit - Models 03608 & 03673

Front Lift Arm



Item No	R&R Part No.	OEM Part No.	Description	Qty Req	Order Quantity
76	<b>R69-6470</b>	69-6470	Bushing - Flanged	6	
77	<b>R110-0995</b>	110-0995	Lift Arm - No. 5	1	
78	<b>R117-0208</b>	117-0208	Shaft- Pivot - Lift Arm	3	
78	<b>R95-8531</b>	95-8531	Pivot Shaft	3	
<i>Tech Note: 2006-2009:</i>					
79	<b>R119-6988</b>	119-6988	Hydraulic Cylinder	1	
80	<b>R453017</b>	01-166-0050, 01-166-0240, 01-166-0800, 24-13-AD, 24-14-AD, 32-8110, 3256-26, 3256-6, 453017, 69-8980, 87-7270	Washer - Flat 1/2	3	
81	<b>R117-0148</b>	117-0148	Pin - Hyd Cyl	3	
82	<b>R104-0046</b>	104-0046	Pin - Slide - Cylinder	3	
83	<b>R3-6498</b>	3--6498, 3-6498, 47-8270	Washer - Thrust	6	
84	<b>R301504</b>	2296-42, 301504, 32127-24, 32128-33, 32146-17, 3296-16, 3296-42, 3296-42 , 915661P	Locknut - ESNA 1/4-20	4	
85	<b>R107-7400</b>	107-7400	Pin - Lynch	3	
86	<b>R107-4027</b>	107-4027	Cap - Pivot Yoke	3	

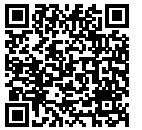
All original equipment manufacturers names and part numbers are used for identification purposes only, and we are in no way implying that our products are original equipment parts. Prices subject to change without notice.



# Replaces Toro Reelmaster 5410G Parts

*Traction Unit - Models 03608 & 03673*

*Front Lift Arm*



Item No	R&R Part No.	OEM Part No.	Description	Qty Req	Order Quantity
87	<b>R256-254</b>	256-254	Bushing 1-1/8 x 1.375 x 1.5	6	
88	<b>R107-2052</b>	107-2052, 138-1248	Pivot Yoke Assy	3	
89	<b>R302-5</b>	21-6010, 302-11, 302-37, 302-47, 302-5, 302-57, 302-58, 302-6, 31-0300, 32-9660, 60-0800, 62-3880, 92-4181	Fitting - Grease	9	
90	<b>R76-2980</b>	76-2980	Washer - Thrust	6	
91	<b>R104-0015</b>	104-0015, 104-8339	Bushing - Flanged	6	
92	<b>R110-0991</b>	110-0991	Lift Arm - No. 1	1	
93	<b>R117-5154-01</b>	117-5154-01	Plate-Bridge 1 and 4	1	
94	<b>R32121-122</b>	01-153-0140, 32121-122	Pin - Roll 1/2 x 2	3	
95	<b>R114-8874</b>	114-8874	Lift Arm - No. 4	1	
96	<b>R84-2450</b>	84-2450	Chain - Straight 4	3	
97	<b>R92-1298</b>	92-1298	Pin - Klik	3	
98	<b>R104-8301</b>	104-8301, 104-9301, 109-6658, 133-7570	Locknut - 3/8-16 Nylon Flanged	6	
99	<b>R110-0922</b>	110-0922	Hoop - Chain	3	

All original equipment manufacturers names and part numbers are used for identification purposes only, and we are in no way implying that our products are original equipment parts. Prices subject to change without notice.



# Replaces Toro Reelmaster 5410G Parts

*Traction Unit - Models 03608 & 03673*

*Front Lift Arm*



Item No	R&R Part No.	OEM Part No.	Description	Qty Req	Order Quantity
100	<b>R63-8410</b>	53-6380, 63-4810, 63-8410	Washer - Isolator Bushing	6	
101	<b>R400264</b>	01-150-0180, 01-178-0610, 20-48-AD, 20-48-AGD, 32-9160, 3224-3, 323-29, 323-7, 400264, 908035P	Bolt - Hex HD 3/8-16 x 1-1/4	6	
102	<b>R32120-93</b>	32120-93	Snap Ring - HD	6	
103	<b>R323-9</b>	01-150-0190, 01-150-1540, 01-178-0614, 107229, 20-50-AD, 20-50-AGD, 30-9430, 32105-4, 3224-5, 323-9, 513363, 513364, 5377, 908037P	Bolt - Hex HD 3/8-16 x 1-3/4	3	
104	<b>R3296-59</b>	3296-59	Locknut - 3/8-16 Nylon Jam	3	
105	<b>R99-7667</b>	99-7667	Washer - Flat 5/8	3	

All original equipment manufacturers names and part numbers are used for identification purposes only, and we are in no way implying that our products are original equipment parts. Prices subject to change without notice.