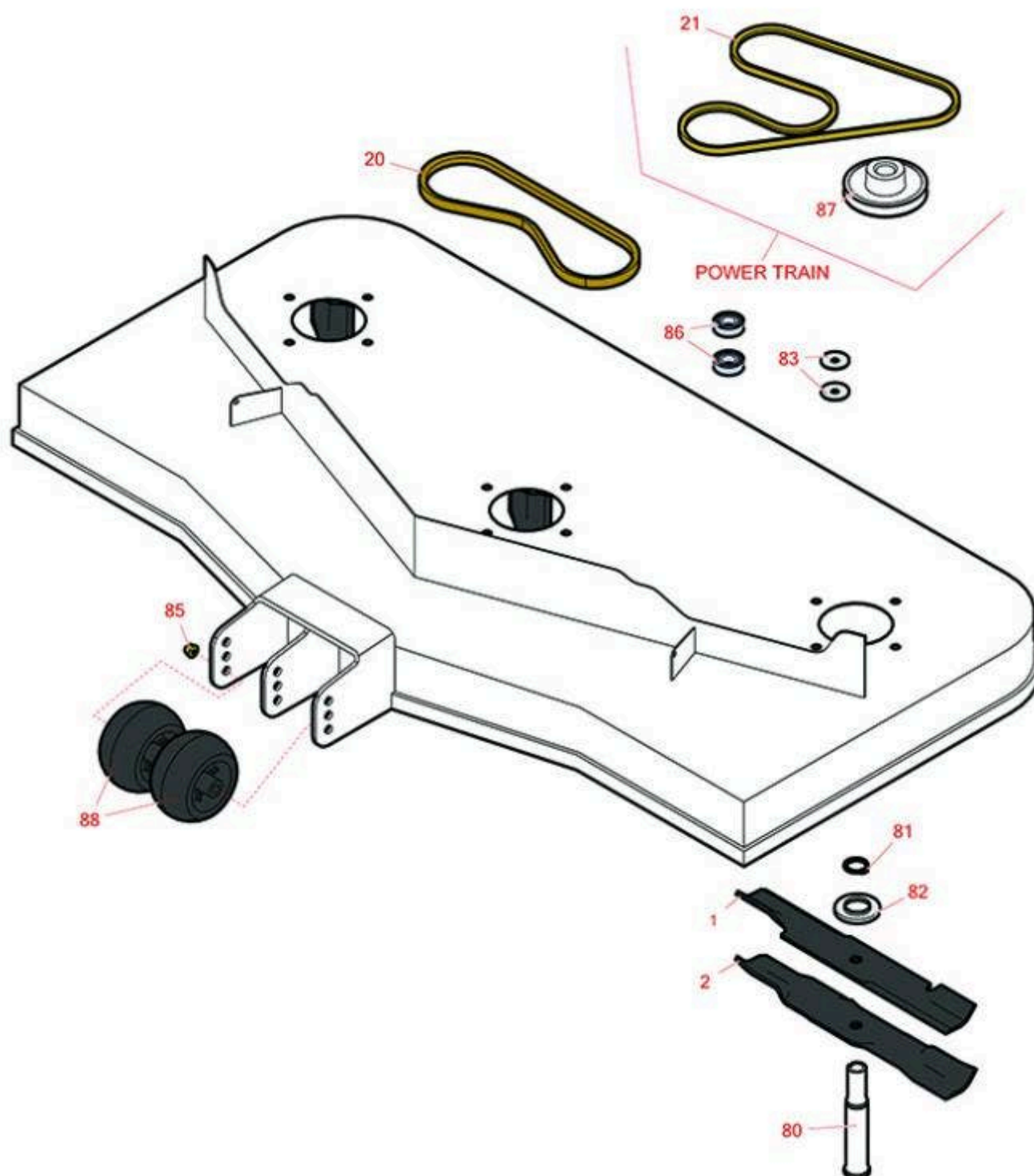




# Replaces John Deere 648M Quik-Trak Stand-On Mower Parts

Rotary Mower  
48in Deck Parts



All original equipment manufacturers names and part numbers are used for identification purposes only, and we are in no way implying that our products are original equipment parts. Prices subject to change without notice.



# Replaces John Deere 648M Quik-Trak Stand-On Mower Parts

Rotary Mower  
48in Deck Parts



Item No	R&R Part No.	OEM Part No.	Description	Qty Req	Order Quantity
---------	--------------	--------------	-------------	---------	----------------

## Blades

1	RRB3065-1602	TCU37209	Mower Blade - High-Lift 16.5 x 2.5in x 5/8 Mt Hole	3	
---	--------------	----------	--	---	--

*Detail Description: R&R Products rotary blades are manufactured in the USA with superior alloy steel and hardened for extended life. Lifetime guaranteed against defects in material and workmanship.:*

2	RRB5360-1602	UC10751	Mower Blade - Wave Mulcher 16.5 x 2.5in x 5/8 Mt Hole	3	
---	--------------	---------	---	---	--

## Belts

20	RTCUC37189	TCU37189, UC18232	Belt - Hyd Pump	1	
----	------------	----------------------	-----------------	---	--

21	RTCUC34217	TCU34217	Belt - Deck - B49	1	
----	------------	----------	-------------------	---	--

## Other Parts Available

80	RTCUC40290	TCU40290, UC14507	Shaft - Spindle	3	
----	------------	----------------------	-----------------	---	--

81	RC17964	C17964	Ring - Retaining HD	3	
----	---------	--------	---------------------	---	--

82	RTCUC40287	TCU40287, UC13505	Retainer - Grease	3	
----	------------	----------------------	-------------------	---	--

83	RTCUC37610	TCU37610	Washer	4	
----	------------	----------	--------	---	--

85	R14M7396	14M7396	Locknut - Flanged Nyloc	2	
----	----------	---------	-------------------------	---	--

86	RTCUC34197	TCU34197	Bearing	4	
----	------------	----------	---------	---	--

87	RTCUC37595	TCU37595	Pulley	1	
----	------------	----------	--------	---	--

88	RTCUC18744	TCU18744, UC28193	Wheel - 5 in x 2 3/4	2	
----	------------	----------------------	----------------------	---	--

All original equipment manufacturers names and part numbers are used for identification purposes only, and we are in no way implying that our products are original equipment parts. Prices subject to change without notice.