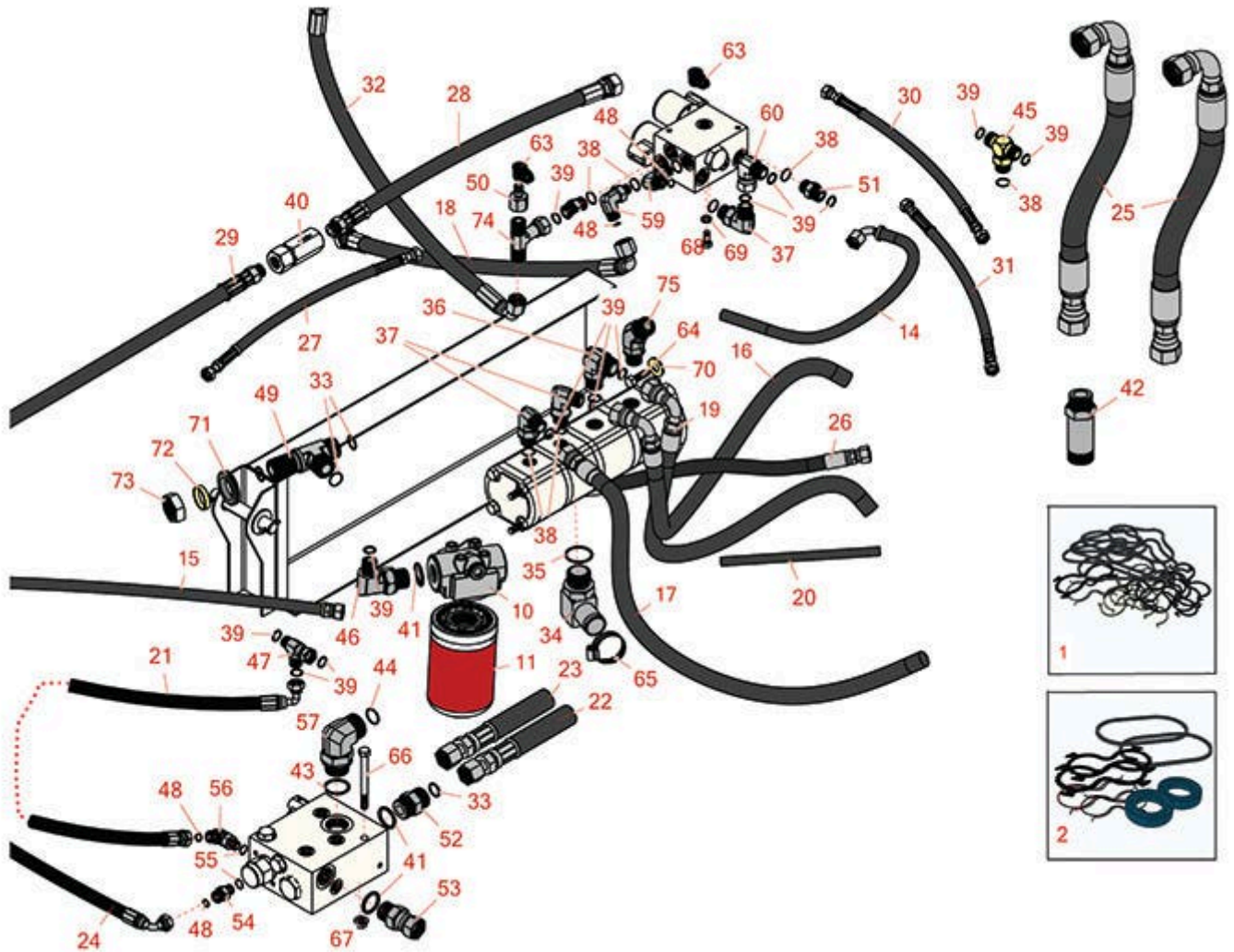




# Replaces Toro Groundsmaster 4000-D Parts

Rotary Mower - Model 30412  
Pump Installation and Filter



All original equipment manufacturers names and part numbers are used for identification purposes only, and we are in no way implying that our products are original equipment parts. Prices subject to change without notice.



# Replaces Toro Groundsmaster 4000-D Parts

Rotary Mower - Model 30412  
Pump Installation and Filter



| Item No             | R&R Part No.     | OEM Part No.         | Description                  | Qty Req | Order Quantity |
|---------------------|------------------|----------------------|------------------------------|---------|----------------|
| <b>Overhaul Kit</b> |                  |                      |                              |         |                |
| 1                   | <b>R115-3776</b> | 115-3776             | Seal Kit - 4 Stage Pump      | 1       |                |
| 2                   | <b>R115-4110</b> | 115-4110             | Seal Kit - Hyd Fan Motor     | 1       |                |
| <b>Filters</b>      |                  |                      |                              |         |                |
| 10                  | <b>R93-2242</b>  | 93-2242              | Oil Filter & Head Assy - Hyd | 1       |                |
| 11                  | <b>R75-1310</b>  | 13170210,<br>75-1310 | Baldwin Hyd Oil Filter       | 1       |                |
| 11                  | <b>RRF10623</b>  | 13170210,<br>75-1310 | SilverGuard Oil Filter - Hyd | 1       |                |
| <b>Hoses</b>        |                  |                      |                              |         |                |
| 14                  | <b>R115-8465</b> | 115-8465             | Hydraulic Hose Assy          | 1       |                |
| 15                  | <b>R115-8476</b> | 115-8476             | Hydraulic Hose Assy          | 1       |                |
| 16                  | <b>R105-3985</b> | 105-3985             | Hydraulic Hose Assy          | 1       |                |
| 17                  | <b>R95-3737</b>  | 95-3737              | Hydraulic Hose Assy          | 1       |                |
| 18                  | <b>R114-9772</b> | 114-9772             | Hydraulic Hose Assy          | 1       |                |
| 19                  | <b>R114-3837</b> | 114-3837             | Hydraulic Hose Assy          | 1       |                |
| 20                  | <b>R100-5649</b> | 100-5649             | Hose                         | 1       |                |
| 21                  | <b>R66-8490</b>  | 66-8490              | Hydraulic Hose Assy          | 1       |                |
| 22                  | <b>R107-0204</b> | 107-0204             | Hydraulic Hose Assy          | 1       |                |
| 23                  | <b>R100-5525</b> | 100-5525             | Hydraulic Hose Assy          | 1       |                |
| 24                  | <b>R110-6106</b> | 110-6106             | Hydraulic Hose Assy          | 1       |                |
| 25                  | <b>R115-3771</b> | 115-3771             | Hydraulic Hose Assy          | 2       |                |
| 26                  | <b>R100-5645</b> | 100-5645             | Hydraulic Hose Assy          | 1       |                |

All original equipment manufacturers names and part numbers are used for identification purposes only, and we are in no way implying that our products are original equipment parts. Prices subject to change without notice.



# Replaces Toro Groundsmaster 4000-D Parts

Rotary Mower - Model 30412  
Pump Installation and Filter



| Item No                      | R&R Part No.     | OEM Part No.                 | Description                | Qty Req | Order Quantity |
|------------------------------|------------------|------------------------------|----------------------------|---------|----------------|
| 27                           | <b>R100-5643</b> | 100-5643                     | Hydraulic Hose Assy        | 1       |                |
| 28                           | <b>R100-5617</b> | 100-5617                     | Hydraulic Hose Assy        | 1       |                |
| 29                           | <b>R104-2237</b> | 104-2237                     | Hydraulic Hose Assy        | 1       |                |
| 30                           | <b>R100-5570</b> | 100-5570                     | Hydraulic Hose Assy        | 1       |                |
| 31                           | <b>R100-5641</b> | 100-5641                     | Hydraulic Hose Assy        | 1       |                |
| 32                           | <b>R104-4584</b> | 104-4584                     | Hydraulic Hose Assy        | 1       |                |
| <b>Other Parts Available</b> |                  |                              |                            |         |                |
| 33                           | <b>R237-58</b>   | 237-58                       | O-Ring                     | 5       |                |
| 34                           | <b>R92-7526</b>  | 92-7526                      | Hydraulic Fitting - 90 Deg | 1       |                |
| 35                           | <b>R237-101</b>  | 237-101                      | O-Ring                     | 1       |                |
| 36                           | <b>R340-16</b>   | 100-8255,<br>340-16          | Hydraulic Fitting          | 1       |                |
| 37                           | <b>R340-98</b>   | 340-98                       | Hydraulic Fitting          | 3       |                |
| 38                           | <b>R237-79</b>   | 237-79                       | O-Ring                     | 12      |                |
| 39                           | <b>R237-30</b>   | 23-6320,<br>237-30           | O-Ring - Seal              | 18      |                |
| 40                           | <b>R100-5600</b> | 100-5600                     | Valve-Check                | 1       |                |
| 41                           | <b>R237-81</b>   | 237-81,<br>237.81,<br>327-81 | O-Ring                     | 4       |                |
| 42                           | <b>R100-5565</b> | 100-5565                     | Hydraulic Fitting          | 2       |                |
| 43                           | <b>R237-146</b>  | 237-146,<br>340-146          | O-Ring                     | 3       |                |
| 44                           | <b>R340-65</b>   | 340-65                       | O-Ring                     | 3       |                |

All original equipment manufacturers names and part numbers are used for identification purposes only, and we are in no way implying that our products are original equipment parts. Prices subject to change without notice.



# Replaces Toro Groundsmaster 4000-D Parts

*Rotary Mower - Model 30412  
Pump Installation and Filter*



| Item No | R&R Part No.     | OEM Part No.                   | Description                        | Qty Req | Order Quantity |
|---------|------------------|--------------------------------|------------------------------------|---------|----------------|
| 45      | <b>R340-157</b>  | 340-157                        | Hydraulic Fitting - Tee            | 1       |                |
| 46      | <b>R340-131</b>  | 340-131                        | Hydraulic Fitting - 90 Deg         | 1       |                |
| 47      | <b>R340-115</b>  | 340-115,<br>96-0849            | Fitting - Tee                      | 1       |                |
| 48      | <b>R237-22</b>   | 107-8844,<br>237-22,<br>237-78 | O-Ring                             | 5       |                |
| 49      | <b>R104-3558</b> | 104-3558                       | Fitting-Bulkhead                   | 1       |                |
| 50      | <b>R100-5616</b> | 100-5616                       | Hydraulic Fitting                  | 1       |                |
| 51      | <b>R340-4</b>    | 340-4                          | Hydraulic Fitting - Male Connector | 2       |                |
| 52      | <b>R340-9</b>    | 340-9                          | Fitting - Straight Connector       | 1       |                |
| 53      | <b>R106-2009</b> | 106-2009                       | Hydraulic Fitting - Swivel         | 1       |                |
| 54      | <b>R340-2</b>    | 340-2,<br>60-1920              | Hydraulic Fitting - Striaight      | 1       |                |
| 55      | <b>R237-42</b>   | 237-42,<br>31-4160             | O-Ring                             | 9       |                |
| 56      | <b>R340-77</b>   | 340-100,<br>340-77,<br>95-7889 | Hydraulic Fitting                  | 1       |                |
| 57      | <b>R340-129</b>  | 340-129                        | Hydraulic Fitting - 90 Deg         | 1       |                |
| 59      | <b>R340-18</b>   | 340-18                         | Hydraulic Fitting                  | 1       |                |
| 60      | <b>R94-6031</b>  | 94-6031                        | Hydraulic Fitting                  | 1       |                |
| 63      | <b>R354-79</b>   | 354-79                         | Cap-Dust                           | 2       |                |

All original equipment manufacturers names and part numbers are used for identification purposes only, and we are in no way implying that our products are original equipment parts. Prices subject to change without notice.



# Replaces Toro Groundsmaster 4000-D Parts

Rotary Mower - Model 30412  
Pump Installation and Filter



| Item No | R&R Part No. | OEM Part No.  | Description                    | Qty Req | Order Quantity |
|---------|--------------|---|--------------------------------|---------|----------------|
| 64      | R400260      | 01-178-0605,<br>18-4100,<br>19-8270,<br>323-3,<br>323-33,<br>323-34,<br>323-5,<br>3235-5  | Bolt - Hex HD 3/8-16 x 7/8     | 2       |                |
| 65      | R2412-111    | 2412-111  | Clamp - Hose - Worm            | 2       |                |
| 66      | R323-42      | 01-178-0630,<br>323-42  | Bolt - Hx HD 3/8-16 x 3 3/4    | 1       |                |
| 67      | R104-8301    | 104-8301,<br>104-9301,<br>109-6658,<br>133-7570   | Locknut - 3/8-16 Nylon Flanged | 3       |                |
| 68      | R322-3       | 01-150-1420,<br>01-178-0506,<br>20-24-AD,<br>20-24-AGD,<br>322-3,<br>48-9270,<br>513339,<br>908017P   | Bolt - Hex HD 5/16-18 x 3/4    | 2       |                |
| 69      | R3253-4      | 01-166-0110,<br>01-166-0510,<br>23-10-GD,<br>24-7170,<br>30-8520,<br>3253-4,<br>42-9850,<br>48-9350,<br>48-9360,<br>48-9570,<br>68-9420,<br>99-7577 | Washer - Lock 5/16 Zinc        | 2       |                |
| 70      | R87-7270-01  | 87-7270,<br>87-7270-01  | Washer - Flat 1/2              | 2       |                |
| 71      | R240-7       | 240-7   | Grommet - Rubber - 2 in OD     | 2       |                |

All original equipment manufacturers names and part numbers are used for identification purposes only, and we are in no way implying that our products are original equipment parts. Prices subject to change without notice.



# Replaces Toro Groundsmaster 4000-D Parts

*Rotary Mower - Model 30412  
Pump Installation and Filter*



| Item No | R&R Part No.     | OEM Part No. | Description                | Qty Req | Order Quantity |
|---------|------------------|--------------|----------------------------|---------|----------------|
| 72      | <b>R69-8900</b>  | 69-8900      | Spacer                     | 2       |                |
| 73      | <b>R340-126</b>  | 340-126      | Nut - Bulkhead             | 2       |                |
| 74      | <b>R93-6810</b>  | 93-6810      | Fitting - Tee              | 1       |                |
| 75      | <b>R115-3768</b> | 115-3768     | Hydraulic Fitting - 45 Deg | 1       |                |

All original equipment manufacturers names and part numbers are used for identification purposes only, and we are in no way implying that our products are original equipment parts. Prices subject to change without notice.