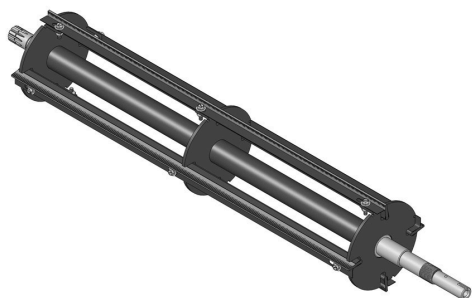




Brush Reel - LH Keyed Shaft

R101491



Details

R&R Products Brush Reels are an exciting concept in greens maintenance to clean sand and other debris left on grass surfaces after top dressing. If left on the turf, this sand and debris can cause dulling and excessive wear on mowing reels and bed knives. However, with the use of R&R Brush Reels, sand and debris are easily swept into conventional grass baskets. R&R Brush Reels are also used to stand turf up before mowing to give a cleaner, more uniform and truer putting surface. Designed with four replaceable brushes mounted in a metal frame, simply replace regular mowing reels with R&R Brush Reels and adjust bedknife to clear the brushes. The height of cut should be set to the top of the grass blades or slightly below. *Remove bedknife for the removal of pine needles. SUGGESTED USAGE: Verticutting - Dew Removal - Leaf Clean Up - Thatch Prevention Prior to Overseeding - Grooming before Mowing - Removal of Excessive Top Dressing

- Cleans Sand and other Debris off Grass Surfaces
- Stands up grass for cleaner cuts
- Equipped with four replaceable polyethylene brushes

Specifications

Manufacturer

R&R Products

Fits Models

Jacobsen E-Plex
Jacobsen E-Plex II
Jacobsen Greens King IV
Jacobsen Greens King IV Plus

Amacron Golf & Turf

19 Tate Drive Kerang, 3579

+61 2 8011 1001 Toll Free: 1300 AMACRON

<https://amacron.rrproducts.com/>



Brush Reel - LH Keyed Shaft

R101491



Replacement Parts

R150425	Bolt - Hex HD 8-32 x 5/8
R150426	Washer - 8 SAE
R150481	Brush Assy - Brush Reel
R3296-9	Locknut - Comb

Amacron Golf & Turf

19 Tate Drive Kerang, 3579

+61 2 8011 1001 Toll Free: 1300 AMACRON

<https://amacron.rrproducts.com/>