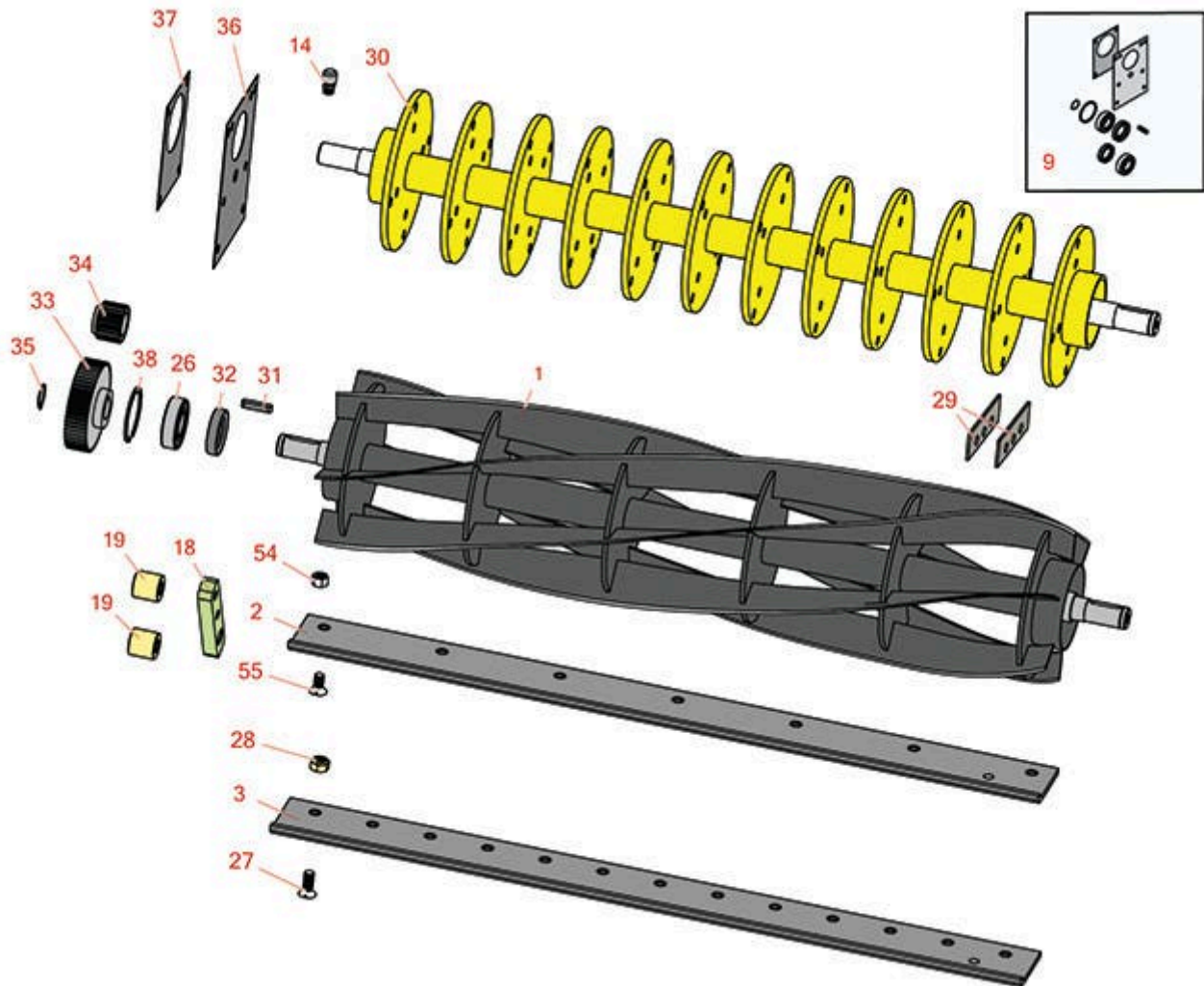




# Replaces John Deere 3365 Hydraulic Gang Mower Parts

MK II Cutting Unit  
Reel, Bedknife & V-Cut Reel



All original equipment manufacturers names and part numbers are used for identification purposes only, and we are in no way implying that our products are original equipment parts. Prices subject to change without notice.



# Replaces John Deere 3365 Hydraulic Gang Mower Parts

MK II Cutting Unit

Reel, Bedknife & V-Cut Reel



Item No	R&R Part No.	OEM Part No.	Description	Qty Req	Order Quantity
---------	--------------	--------------	-------------	---------	----------------

## R&R Reels, Lifetime Guaranteed

1	RAET10900	AET10425, AET10900, AMT2872, ET11308, ET13665	Reel - 6 Blade	1	
---	-----------	---	----------------	---	--

*Detail Description: R&R Reel blades are expertly crafted from premium high carbon-boron alloy steel, heat-treated to perfectly complement both R&R and OEM bedknives. Each reel undergoes precision cylindrical grinding on bearing surfaces, followed by relief grinding for optimal performance. Advanced computer balancing ensures extended reel and bearing life. Backed by our lifetime guarantee against defects in materials and craftsmanship under normal use, R&R Reels deliver unmatched durability and cutting precision you can trust.:*

1	RAET10426	AET10426, AET10901, ET11310, ET13666	Reel - 8 Blade	1	
---	-----------	---	----------------	---	--

*Detail Description: R&R Reel blades are expertly crafted from premium high carbon-boron alloy steel, heat-treated to perfectly complement both R&R and OEM bedknives. Each reel undergoes precision cylindrical grinding on bearing surfaces, followed by relief grinding for optimal performance. Advanced computer balancing ensures extended reel and bearing life. Backed by our lifetime guarantee against defects in materials and craftsmanship under normal use, R&R Reels deliver unmatched durability and cutting precision you can trust.:*

1	RAET10427	AET10427, ET11439, ET13667	Reel - 10 Blade	1	
---	-----------	----------------------------------	-----------------	---	--

*Detail Description: R&R Reel blades are expertly crafted from premium high carbon-boron alloy steel, heat-treated to perfectly complement both R&R and OEM bedknives. Each reel undergoes precision cylindrical grinding on bearing surfaces, followed by relief grinding for optimal performance. Advanced computer balancing ensures extended reel and bearing life. Backed by our lifetime guarantee against defects in materials and craftsmanship under normal use, R&R Reels deliver unmatched durability and cutting precision you can trust.:*

## R&R Bedknives, Lifetime Guaranteed

2	RET11434	ET11434	Bedknife - 7 Hole	1	
---	----------	---------	-------------------	---	--

All original equipment manufacturers names and part numbers are used for identification purposes only, and we are in no way implying that our products are original equipment parts. Prices subject to change without notice.



# Replaces John Deere 3365 Hydraulic Gang Mower Parts

MK II Cutting Unit

Reel, Bedknife & V-Cut Reel



Item No	R&R Part No.	OEM Part No.	Description	Qty Req	Order Quantity
---------	--------------	--------------	-------------	---------	----------------

*Detail Description: R&R Bedknives are manufactured from high carbon-boron alloy steel and then hardened to RC46-49 to match the temper of our reel blades and original equipment reels. Bedknives are surface ground on the top and front edge and straightened three times before being packaged with oil for rust prevention. All R&R Bedknives now have an increased front edge grind for added life. All R&R Bedknives are guaranteed against defects in material and workmanship under normal use for the life of the part.:*

2	<b>RET11540</b>	ET11540, ET17951	Bedknife - 7 Hole Low Cut	1	
---	-----------------	---------------------	---------------------------	---	--

*Detail Description: R&R Bedknives are manufactured from high carbon-boron alloy steel and then hardened to RC46-49 to match the temper of our reel blades and original equipment reels. Bedknives are surface ground on the top and front edge and straightened three times before being packaged with oil for rust prevention. All R&R Bedknives now have an increased front edge grind for added life. All R&R Bedknives are guaranteed against defects in material and workmanship under normal use for the life of the part.:*

3	<b>RET15739</b>	ET15739	Bedknife - 13 Hole Standard	1	
---	-----------------	---------	-----------------------------	---	--

*Detail Description: R&R Bedknives are manufactured from high carbon-boron alloy steel and then hardened to RC46-49 to match the temper of our reel blades and original equipment reels. Bedknives are surface ground on the top and front edge and straightened three times before being packaged with oil for rust prevention. All R&R Bedknives now have an increased front edge grind for added life. All R&R Bedknives are guaranteed against defects in material and workmanship under normal use for the life of the part.:*

## Overhaul Kits

9	<b>R100173</b>		Overhaul Kit - Cutting Unit	0	
---	----------------	--	-----------------------------	---	--

*Detail Description: Includes 2 ea.:RA203605 Bearings; 1ea.: R1056 Snap Ring, RET10872 Gasket, RET10873 Gasket, RET11301 Key, RET13673 Seal, RET13674 Seal & RN123155 Snap Ring;*

## Other Parts Available

14	<b>R302-14</b>	JD5801	Fitting - Relief	1	
18	<b>RET13688</b>	ET13688	Bracket - Front Roller	2	
19	<b>RET11414</b>	ET11414	Spacer - Front Roller	4	
26	<b>RA203605</b>	ET10824	Bearing	2	
26	<b>RJD7678</b>	JD7678	Bearing	2	

All original equipment manufacturers names and part numbers are used for identification purposes only, and we are in no way implying that our products are original equipment parts. Prices subject to change without notice.



# Replaces John Deere 3365 Hydraulic Gang Mower Parts

MK II Cutting Unit

Reel, Bedknife & V-Cut Reel



Item No	R&R Part No.	OEM Part No.	Description	Qty Req	Order Quantity
27	<b>R19M5055</b>	19M5055, 19M8551	Screw - Bedknife M10-1.5 x 25	13	
<i>Tech Note: Fits 13 Hole Bed Knife Only:</i>					
28	<b>R14M7400</b>	14M7400	Locknut - 10mm	13	
29	<b>RET15712</b>	ET15712	Verti-Cut Blade - Long	40	
<i>Tech Note: Fits Inside Discs:</i>					
29	<b>RET15713</b>	ET15713	Verti-Cut Blade - Short	8	
<i>Tech Note: Fits Outside Discs:</i>					
30	<b>RET15302</b>	ET15302	Shaft - V-Cut w/o Blades	1	
31	<b>RET11301</b>	ET11301	Key - 1/4 x 1/4 x 1-1/4	1	
32	<b>RET13673</b>	ET13673	Seal - Reel Motor End	1	
32	<b>RET13674</b>	ET13674	Seal - Reel	1	
33	<b>RET11300</b>	ET11300	Gear - Reel	1	
34	<b>RET11299</b>	ET11299	Gear - Hyd Motor	1	
35	<b>R1056</b>	ET11322, R26192	Ring - Snap Reel	1	
36	<b>RET10872</b>	ET10872	Gasket - Gear Case	1	
37	<b>RET10873</b>	ET10873	Gasket - Hyd Motor	1	
38	<b>RN123155</b>	N123155	Ring - Snap	1	
54	<b>RET15804</b>	ET15804	Locknut - 3/8-16 Top Lock	13	
<i>Tech Note: Fits 13 Hole Bed Knife Only:</i>					
55	<b>R170555</b>	ET11435	Screw - 3/8-16 x 3/4 Flat HD	7	
55	<b>R190652</b>		Screw - Regular - 3/8-16 x 1	7	

All original equipment manufacturers names and part numbers are used for identification purposes only, and we are in no way implying that our products are original equipment parts. Prices subject to change without notice.



# Replaces John Deere 3365 Hydraulic Gang Mower Parts

*MK II Cutting Unit*

*Reel, Bedknife & V-Cut Reel*



All original equipment manufacturers names and part numbers are used for identification purposes only, and we are in no way implying that our products are original equipment parts. Prices subject to change without notice.