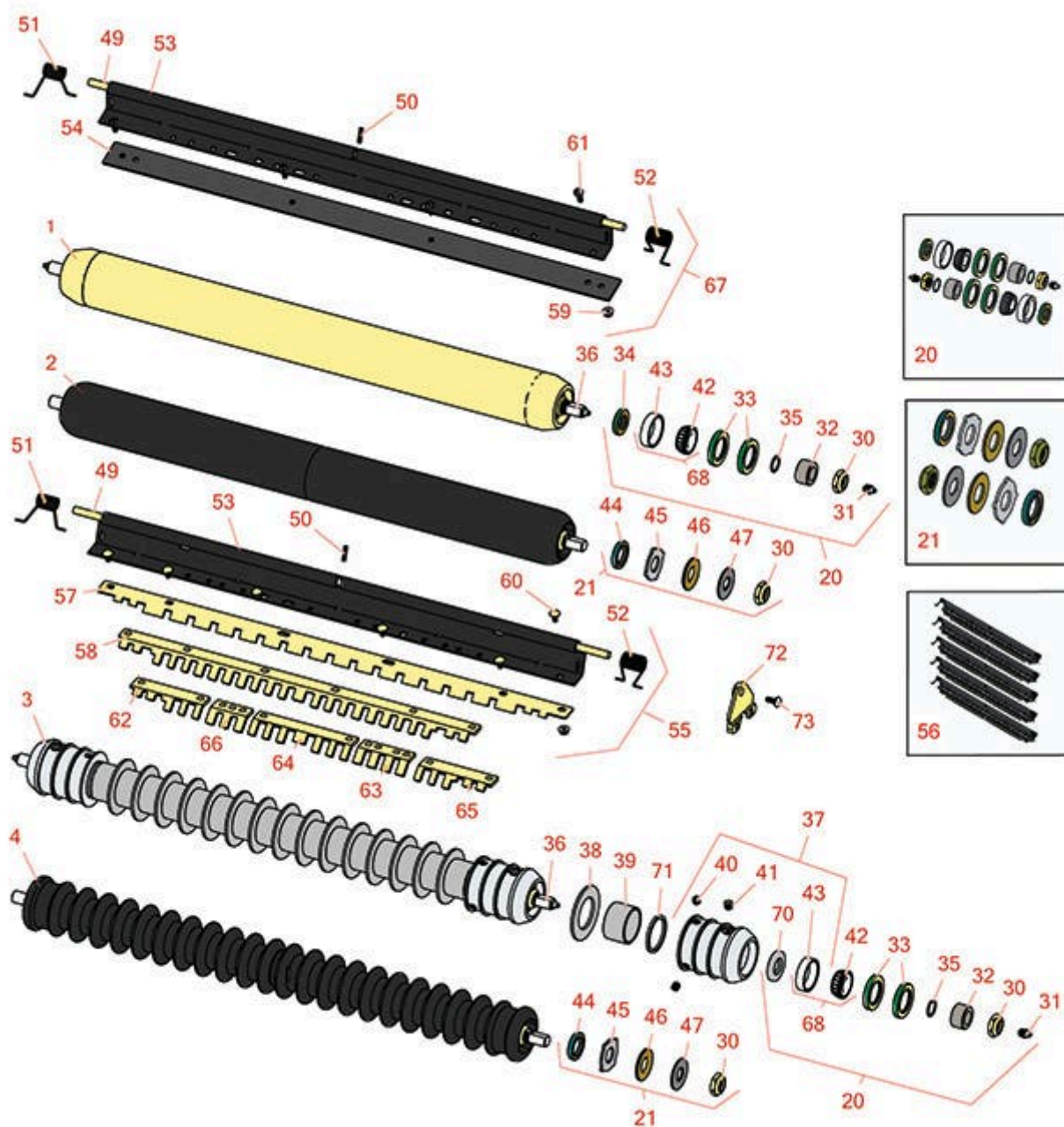




# Replaces John Deere 3365 Hydraulic Gang Mower Parts

ESP Cutting Unit  
Rollers



All original equipment manufacturers names and part numbers are used for identification purposes only, and we are in no way implying that our products are original equipment parts. Prices subject to change without notice.



# Replaces John Deere 3365 Hydraulic Gang Mower Parts

ESP Cutting Unit  
Rollers



Item No	R&R Part No.	OEM Part No.	Description	Qty Req	Order Quantity
---------	--------------	--------------	-------------	---------	----------------

## R&R Rollers

1	<b>RAET10873</b>	AET10873, AMT2961	Roller - Smooth Tubular Steel 26	1	
---	------------------	----------------------	----------------------------------	---	--

*Detail Description: Constructed with a through shaft, this heavy duty roller uses greasable tapered bearings for extended life.:*

1	<b>RAMT1056</b>	AMT2976	Roller - Smooth Heavy Duty Tubular Steel - 30	1	
---	-----------------	---------	---	---	--

*Detail Description: Constructed with a through shaft, this heavy duty roller uses tapered bearings for extended life.:*

1	<b>RAET11265</b>	AMT2969	Roller - Smooth Heavy Duty Tubular Steel - 26	1	
---	------------------	---------	---	---	--

*Detail Description: Constructed with a through shaft, this heavy-duty roller uses tapered bearings for extended life.:*

2	<b>R1203610</b>		Roller - Smooth UHMW Polyethylene	0	
---	-----------------	--	-----------------------------------	---	--

*Detail Description: Machined from solid UHMW, this low maintenance roller uses a 1" solid stainless steel shaft and requires no grease. UHMW material prevents build-up of debris.:*

3	<b>R500508</b>		Roller - Grooved Repairable Steel	0	
---	----------------	--	-----------------------------------	---	--

*Detail Description: Constructed with a through shaft and greasable ball bearings, this roller can be repaired by unscrewing the ends and replacing the series of washers and spacers.:*

3	<b>R500514</b>	AMT2977, BM25319	Roller - Grooved Repairable Steel - 30	1	
---	----------------	---------------------	--	---	--

*Detail Description: Constructed with a through shaft and greasable ball bearings. This roller can be repaired by unscrewing the ends and replacing the series of washers and spacers.:*

3	<b>R500509</b>	AMT2968, BM25318	Roller - Grooved Repairable Steel - 26	1	
---	----------------	---------------------	--	---	--

*Detail Description: Constructed with a through shaft and greasable ball bearings. This roller can be repaired by unscrewing the ends and replacing the series of washers and spacers.:*

4	<b>R1203600</b>		Roller - Grooved UHMW Polyethylene	0	
---	-----------------	--	------------------------------------	---	--

All original equipment manufacturers names and part numbers are used for identification purposes only, and we are in no way implying that our products are original equipment parts. Prices subject to change without notice.



# Replaces John Deere 3365 Hydraulic Gang Mower Parts

ESP Cutting Unit  
Rollers



Item No	R&R Part No.	OEM Part No.	Description	Qty Req	Order Quantity
---------	--------------	--------------	-------------	---------	----------------

*Detail Description: Machined from solid UHMW, this low maintenance roller rotates around a 1" solid stainless steel shaft and requires no bearings or grease. Patented groove design and smooth UHMW material prevents build-up of debris:*

## Overhaul Kits

20	<b>RAET10632</b>	AET10632	Overhaul Kit - Roller	0	
----	------------------	----------	-----------------------	---	--

*Detail Description: Includes 4 ea: RET15755 Seal; 2 ea: R237-54 O-Ring, R253-122 Seal, R254-78 Bearing, R254-79 Cup, R3296-15 Locknut, R471219 Grease Zerk, RET15726 Sleeve, RET15756 Seal:*

21	<b>R101399</b>		Overhaul Kit - UHMW 2 Pc Roller	1	
----	----------------	--	---------------------------------	---	--

*Detail Description: Fits all R&R 2-1/2" - 3-1/2" Dia. Black UHMW Plastic Rollers that do not use ball bearings.. Includes 2 ea.: R1503230 Star Washers, R1503470 Seals, R150333 Thrust Washers, R3296-15 Locknuts, R1503471 Bronze Thrust Washers:*

## Other Parts Available

30	<b>R3296-15</b>	N101345	Locknut - 3/4-16 Nylon Jam	2	
31	<b>R471219</b>	471219, 471231, JD7759, JD7798	Zerk - Grease	2	
32	<b>RET15726</b>	ET15726, RET15726	Sleeve - Wear Hardened	2	
33	<b>RET15755</b>	ET15755	Seal - Oil	4	
34	<b>RET15756</b>	ET15756, MT1739, MT739	Seal	2	
35	<b>R237-54</b>	U46731, U6731	O-Ring - Small	2	
36	<b>RET16934</b>	ET16934	Shaft - Roller	2	
36	<b>RMT1986</b>	MT1986	Shaft - 30 Roller	2	
36	<b>RET17514</b>	ET17514	Shaft - 26 Roller	2	

All original equipment manufacturers names and part numbers are used for identification purposes only, and we are in no way implying that our products are original equipment parts. Prices subject to change without notice.



# Replaces John Deere 3365 Hydraulic Gang Mower Parts

ESP Cutting Unit  
Rollers



Item No	R&R Part No.	OEM Part No.	Description	Qty Req	Order Quantity
37	R500511		Roller End - Threaded 3	2	
38	R150673		Washer - 3 Repairable Roller	15	
39	R150676		Spacer - 2-3/4 Dia x 1-1/4 L	16	
40	R150691		Screw - Set Nyloc 3/8-16 x 3/8	4	
41	R170714	E14814	Fitting - Pressure Relief	2	
42	R254-78	JD8188	Tapered Bearing Cone	2	
43	R254-79	JD8226	Cup - Bearing	2	
<i>Detail Description: Use R254-79M installation mandrel to properly install race.:</i>					
44	R1503470		Seal - Inner Wiper	2	
45	R1503230		Washer - Thrust Outer Keyed	2	
46	R1503471		Washer - Thrust SAE660 Bronze	2	
47	R150333		Washer - Flat Keyed Outer SS	2	
49	RET16931	ET16931	Pin - 30 Scraper	2	
50	R34M7010	34M7010	Pin - Spring	2	
51	RET17630	ET17630	Spring - Torsion RH	1	
52	RET17629	ET17629	Spring - Torsion LH	1	
53	R500570		Bar - 30 Scraper	2	
53	R500565	MT2368	Bar - Scraper 26	2	
54	RMT2593	MT2593	Blade - 30 Scraper	1	
54	RMT2594	MT2594	Blade - 26 Scraper	1	
55	R500566		Scraper - Assy Fits R500508	5	

*Detail Description: Incl R500567 Scraper:*

All original equipment manufacturers names and part numbers are used for identification purposes only, and we are in no way implying that our products are original equipment parts. Prices subject to change without notice.



# Replaces John Deere 3365 Hydraulic Gang Mower Parts

ESP Cutting Unit  
Rollers



Item No	R&R Part No.	OEM Part No.	Description	Qty Req	Order Quantity
55	<b>R500568</b>		Scraper - Assy 30 Fits OEM	5	
<i>Detail Description: Incl: R500569 Scraper:</i>					
56	<b>RBM18607</b>	BM18607	Scraper Kit - OEM Grooved Roller Set / 5	1	
<i>Detail Description: Includes 30 ea: R03M7251 Bolt, R14M7303 Bolt; 5 ea: R34M7010 Pin, R500569 Scraper, R500570 Bar, RET16931 Pin, RET17629 LH Spring, RET17630 RH Spring:</i>					
57	<b>R500567</b>		Scraper - 30 in Fits R500508	1	
58	<b>R500569</b>		Scraper - 30 in Fits OEM	1	
59	<b>R14M7303</b>	14M7303	Nut - 6mm x 1.0 Flanged	0	
60	<b>R03M7251</b>	03M7251	Bolt - Gr. Roller Scraper	0	
61	<b>R21M7246</b>	21M7246	Screw	0	
62	<b>RMT5158</b>	MT5158	Scraper - Fits J.D. RH End	1	
63	<b>RMT2341</b>	MT2341	Section - Grooved Scraper 4 Tooth	3	
64	<b>RMT2340</b>	MT2340	Scraper - Fits J.D. Center	1	
65	<b>RMT5159</b>	MT5159	Scraper - Fits J.D. LH End	1	
66	<b>RMT2342</b>	MT2342	Section - Grooved Scraper 3 Tooth	1	
67	<b>RAMT1379</b>	AMT1379	Scraper - Assy Solid Roller 30	1	
67	<b>RMT2368</b>	MT2368	Scraper - Assy 26 Solid Roller	1	
<i>Detail Description: Includes: RET17630, RET17629, RET17758, R34M7010 RMT2594 R14M7303 &amp; R21M7246:</i>					
68	<b>R500534</b>		Bearing - with Cup	2	
<i>Detail Description: Kit includes: 1 ea R254-78- Bearing Cone &amp; R254-79 Bearing Cone:</i>					
70	<b>R253-122</b>	253-122	Seal	2	

All original equipment manufacturers names and part numbers are used for identification purposes only, and we are in no way implying that our products are original equipment parts. Prices subject to change without notice.



# Replaces John Deere 3365 Hydraulic Gang Mower Parts

*ESP Cutting Unit  
Rollers*



Item No	R&R Part No.	OEM Part No.	Description	Qty Req	Order Quantity
71	R150676A		Spacer - 1/8	4	
72	RMT2407	MT2407	Bracket - Roller Scraper	2	
73	R03M7221	03M7221	Bolt - Carriage M6 x 16	6	

All original equipment manufacturers names and part numbers are used for identification purposes only, and we are in no way implying that our products are original equipment parts. Prices subject to change without notice.